

## Gallery – A Day in the Life of Mill B

Last updated: 2017-03-11

Many of the photos in this gallery were taken by Marjorie Duryee, a gifted photographer and artist. She was a native of Everett, Washington. You can read more about Marjorie in this online [biography](#) of her. Many thanks to her family for permission to use these wonderful images.

Several of the photos are of various locomotives in the mill's 30" gauge fleet. Over the years, the hoods ended up on units different from which they started. Therefore, the locomotives are referred to by both numbers.

## Mill B Gallery 01

A boom man positions logs to go up the logway to start their journey through Mill B, circa 1943. Marjorie Duryee collection, courtesy Maureen Duryee, 253-27.



## Mill B Gallery 02

A boom man positions logs to go up the logway to start their journey through Mill B, circa 1943. Marjorie Duryee collection, courtesy Maureen Duryee, 253-24.





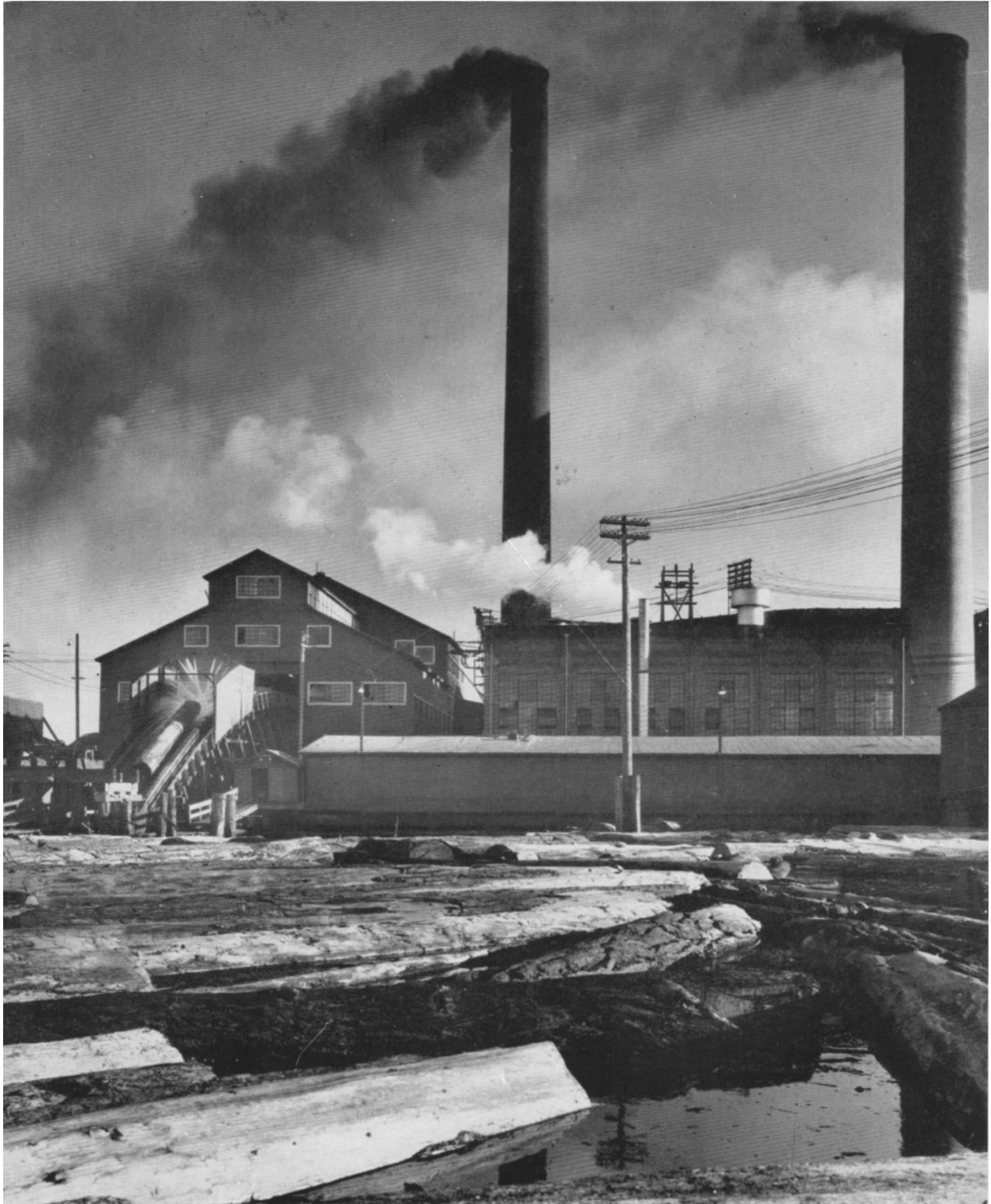
### Mill B Gallery 03

A boom man positions logs to go up the logway to start their journey through Mill B, circa 1943. Marjorie Duryee collection, courtesy Maureen Duryee, 253-28.



### Mill B Gallery 04

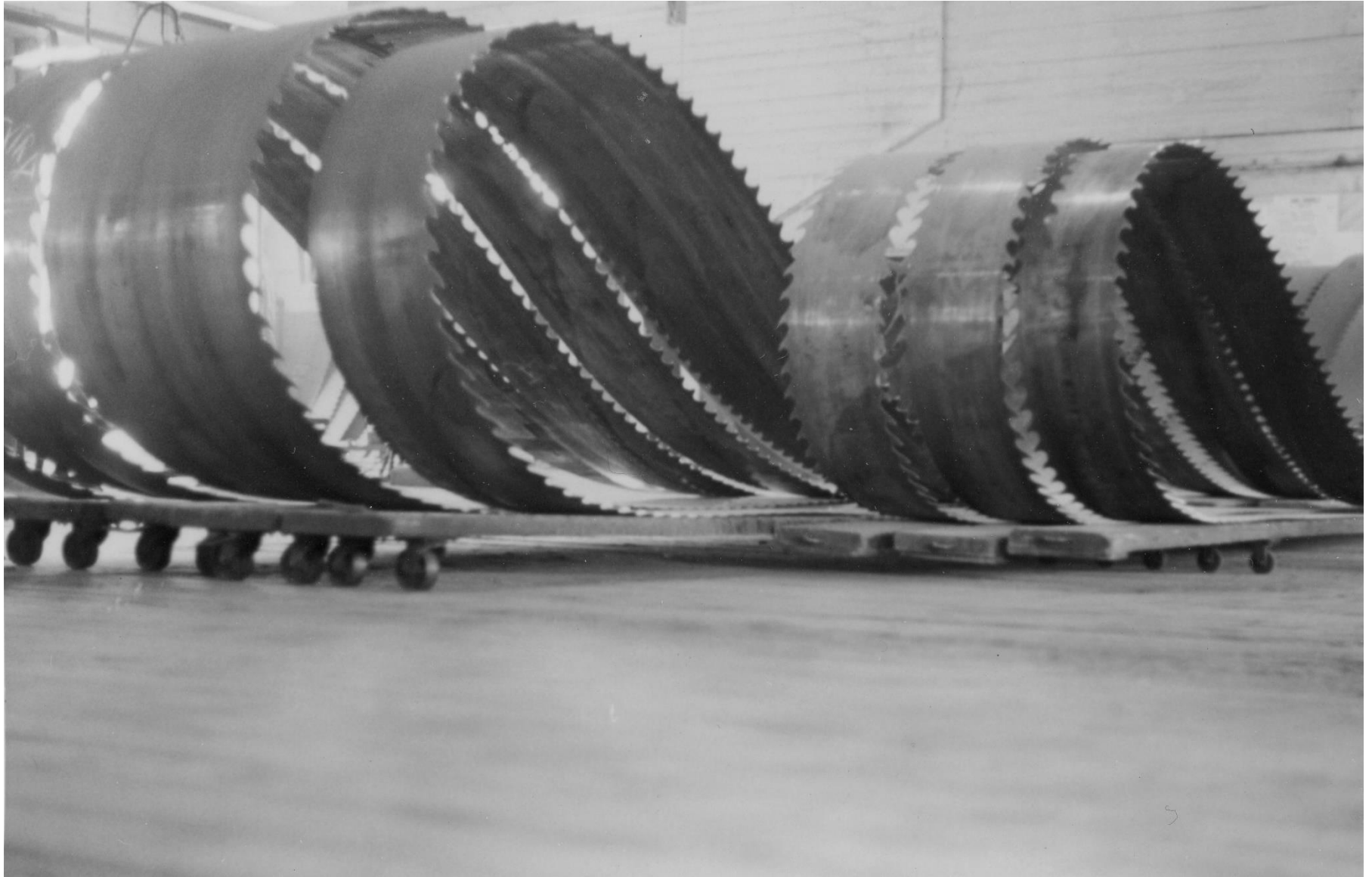
Looking south at Mill B powerhouse and sawmill, from the mill pond, with a log proceeding up the logway, circa 1952. Note single logway. From Everett High School yearbook *Nesika*. Everett Public Library Northwest Room.





## Mill B Gallery 05

Continuous saw blades nearly-continually needed to be sharpened at Mill B, circa 1943. Marjorie Duryee collection, courtesy Maureen Duryee, 253-14.



## Mill B Gallery 06

Looking east to Mill B re-saw mill, with lumber carts parked outside sorting shed, 1957. George Simonson collection, NPRHA.





### Mill B Gallery 07

Looking north from nearly the same spot as the previous photo but approximately 12 years earlier. Marjorie Duryee collection, courtesy Maureen Duryee, 253-10.





## Mill B Gallery 08

The 30" gauge rail network was a crucial part of Mill B operations for many years. Marjorie Duryee collection, courtesy Maureen Duryee, 253-09.



## Mill B Gallery 09

Three Mill B employees sit atop a stack of lumber, circa 1943. Marjorie Duryee collection, courtesy Maureen Duryee, 252-22.



## Mill B Gallery 10

Steam-powered standard gauge traveling crane hoists a stack of lumber at Mill B, circa 1940. Note 30" gauge tracks crossing and parallel to standard gauge. Juleen Studio photo, courtesy Everett History Museum, 1995.4.62.





## Mill B Gallery 11

What appears to be the same traveling crane at work as in the previous photo, approximately three years later (circa 1943). Marjorie Duryee collection, courtesy Maureen Duryee, 253-35.



## Mill B Gallery 12

A close-up of the same traveling crane, circa 1943. Note New York Central gondola 619454 beside crane. Marjorie Duryee collection, courtesy Maureen Duryee, 253-36.



### Mill B Gallery 13

Two Mill B workers prepare 30" gauge locomotive 3-1 to pull a heavy cut of lumber carts, circa 1940. Juleen Studio photo, courtesy Everett History Museum, 1995.4.63.





### Mill B Gallery 14

30" gauge locomotive 7-1 with a worker aboard and one walking nearby, circa 1943. Marjorie Duryee collection, courtesy Maureen Duryee, 253-03.



## Mill B Gallery 15

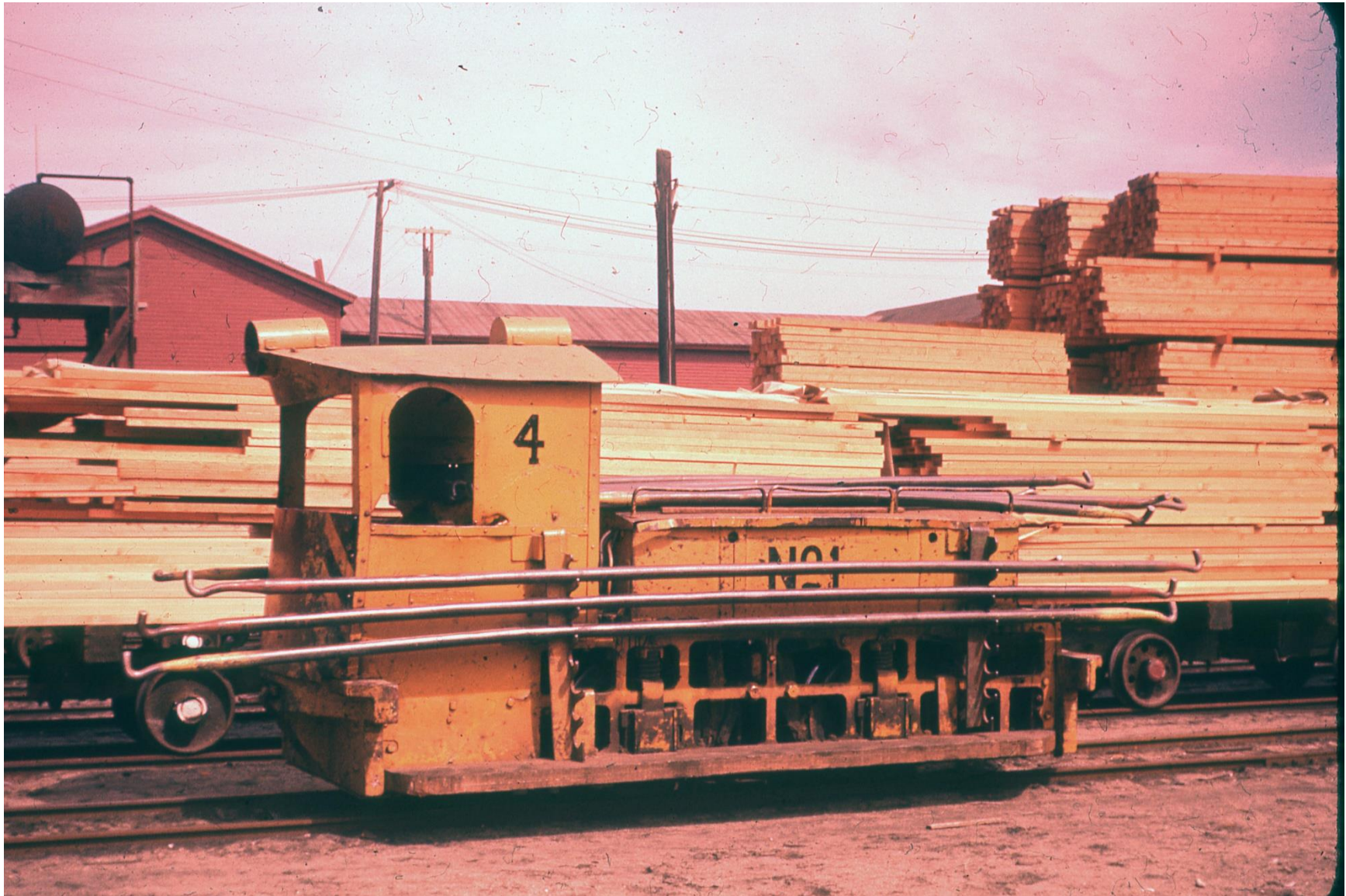
30" gauge locomotive 5-8, circa 1943. Marjorie Duryee collection, courtesy Maureen Duryee, 252-35.





## Mill B Gallery 16

30" gauge locomotive 4-1, showing rods used to couple to lumber carts, 1957. George Simonson collection, NPRHA.





## Mill B Gallery 17

30" gauge locomotive 3-4, showing coupling rod in use, 1957. George Simonson collection, NPRHA.





## Mill B Gallery 18

30" gauge locomotive 3-4, showing coupling rod in use, 1957. George Simonson collection, NPRHA.





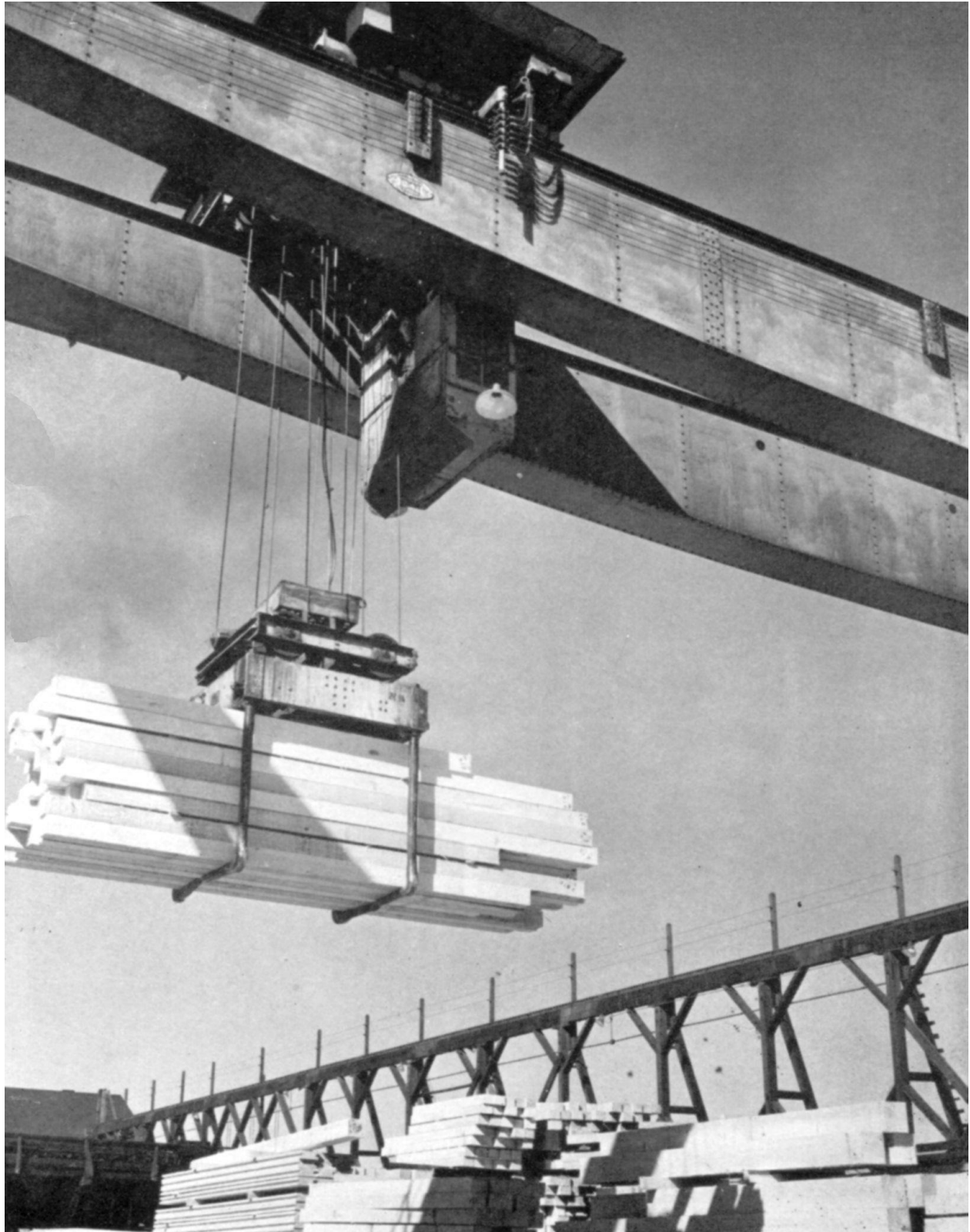
## Mill B Gallery 19

30" gauge locomotive 7-5, with two unidentified Weyerhaeuser employees, outside the largest lumber storage shed, 1957. George Simonson collection, NPRHA.



## Mill B Gallery 20

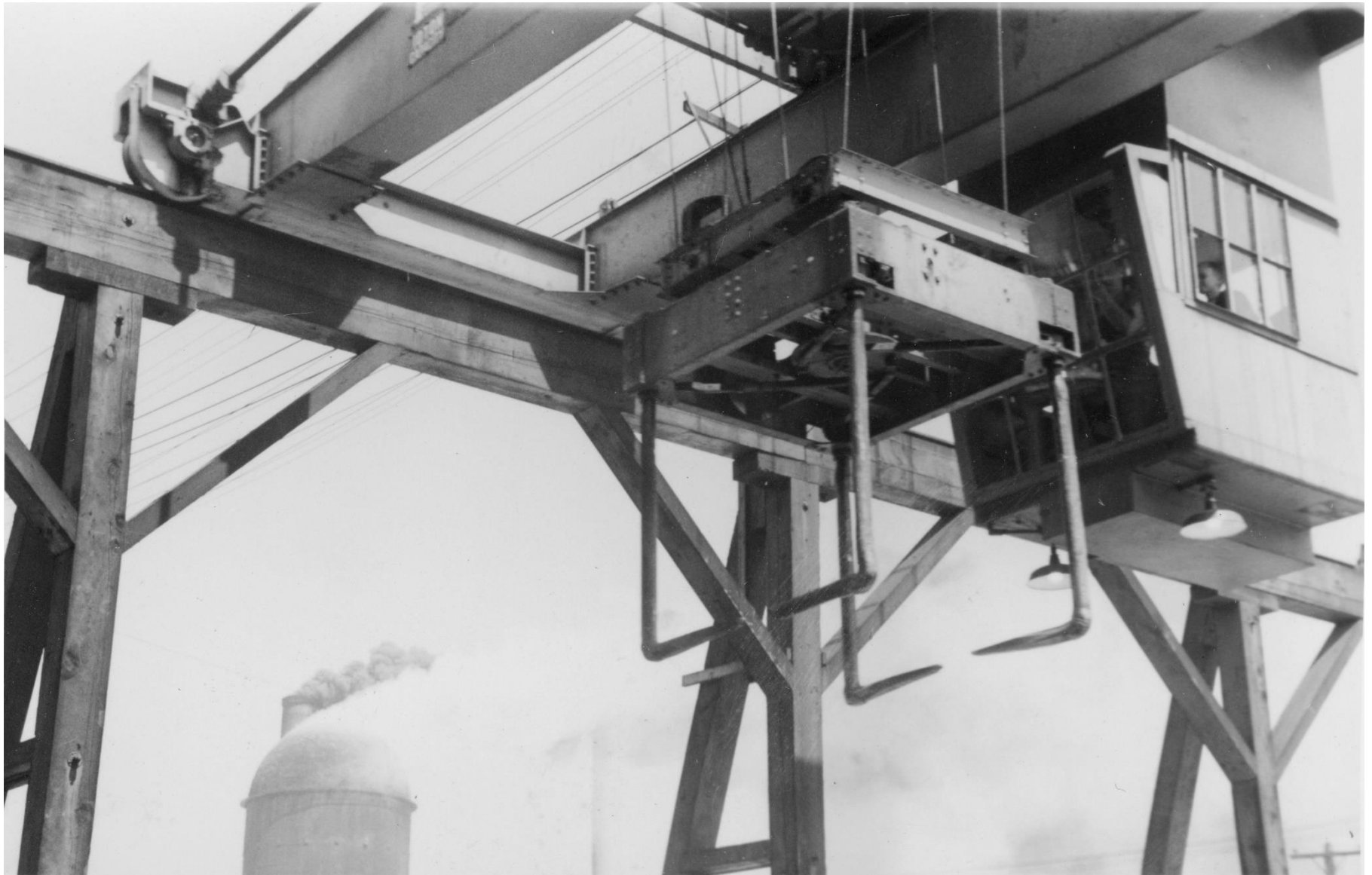
Overhead crane moving a stack of dimensional timbers at Mill B, circa 1948. From Everett High School yearbook *Nesika*. Everett Public Library Northwest Room.





## Mill B Gallery 21

Close-up of an overhead crane in action, circa 1943. Marjorie Duryee collection, courtesy Maureen Duryee, 252-27.



## Mill B Gallery 22

Inside the Mill B cafeteria during a meal, circa 1954. From Everett High School yearbook *Nesika*. Everett Public Library Northwest Room.

