

THE NORTH COASTER

NORTHERN PACIFIC RAILWAY

Route of the *Vista-Dome* NORTH COAST LIMITED

Volume 38 Number 4

Oct.-Nov., 1968



JAPAN, noted for its shrines, temples and gardens is truly one of the scenic wonders of the world.

This is The Year to See Japan

Northern Pacific, Burlington and Japan Air Lines have come up with one of the most attractive tours of the entire season in a package that combines rail and plane travel and includes the most interesting scenic highlights of the ancient island of Japan.

It's a 15-day tour priced at \$977 from St. Paul-Minneapolis and \$996.50 from Chicago.

The tour will depart from Chicago and the Twin Cities on November 1. An optional additional tour of six days with visits in Taiwan and Hong Kong is available for \$266 extra.

Here is a tour that even the most seasoned traveler will recognize as one of the most exciting and complete tours of Japan that has ever been offered.

There is rail travel in the United States on Northern Pacific's famous North Coast Limited . . . plane travel across the Pacific via Japan Air Lines luxurious jet Courier Flight 11.

There are trips planned to Tokyo, Kyoto, Nagoya and many other cities in Japan . . . there are trips to famous shrines and other scenic wonders.

Featured, too, will be a roundtrip ride on the famous 150 mile-an-hour Bullet Train between Tokyo and Kyoto.

Hotel accommodations have been arranged at famous hotels . . . the New Otani in Tokyo, the Kyoto Hotel in Kyoto, and others in Japan.

The entire trip will be escorted and English speaking guides will be present on sightseeing trips to explain and describe the shrines, temples and gardens on the itinerary.

There will be adventures in eating . . . a delicious barbeque lunch at the lovely Chinsanzo Garden Restaurant . . . a Sukiyaki Dinner with Geisha entertainment at Kyoto . . . and many other opportunities to sample the gastronomical delights of Japanese cookery.

For those interested in Japanese industry, there are optional tours

available . . . the Sony Electronic Plant, Model Railroad Toy Manufacturer, the Honda Manufacturing Plant and Canon Camera Plant and others.

Tour cost includes round trip rail and jet plane transportation as well as deluxe motorcoach throughout the tour . . . twin bedded room with private bath at first class hotels . . . All transfers between hotels and airports as well as portorage of two pieces of hand luggage per person . . . sightseeing tours and excursions . . . all taxes, service charges, and tips in connection with accommodations and meals are included in tour price.

Extension tour to Taiwan and Hong Kong departs from Tokyo on November 13. Extension tour includes visits to Taiwan and Hong Kong, sightseeing and shopping trips in the famous market places of Hong Kong. Return trip includes a full day in Hawaii, a visit to Waikiki Beach and 10:15 departure from Hawaii. Price for the 6-day extension tour is only \$266 additional.

Continued on page 2



VISTA-DOME NORTH COAST LIMITED in the Rocky Mountains.



Published by the Passenger Traffic Department
NORTHERN PACIFIC RAILWAY COMPANY
ST. PAUL, MINN. 55101

L. HOLMSTROM - - Passenger Traffic Manager
M. L. THOMSON - - Asst. Pass. Traffic Mgr.
W. A. GUSTAFSON - - - - - Editor

MADE IN U. S. A. 6250

BEAUTY—wonder—thrills!
Geysers, bears, lakes and mountains. A vacation in Yellowstone is a rich education—a glorious adventure you and your children should enjoy.

Mail this coupon to A. B. Smith,
747 Northern Pacific Bldg., St. Paul, Minn.

MY VACATION TRIP

Name *Alan Hart*

Address *32 York Drive
Burlington Vermont
05401*

Books or trips I am interested in (✓) Round Trip Summer Fare from Chicago

<input checked="" type="checkbox"/> Yellowstone Park	Portland	\$ 59.35
<input type="checkbox"/> Pacific Northwest	Seattle	90.30
<input type="checkbox"/> Rainier Park	Tacoma	90.30
<input type="checkbox"/> Alaska (Skagway)		190.30
<input type="checkbox"/> Burlington Escorted Tours (all expense)		\$199.00 to 226.00

"Route of the North Coast Limited" 176

Double Surprise

The Northern Pacific Railway company passenger department received quite a surprise when the above request for travel information was received at the St. Paul offices of the company.

The ad was clipped from a 1927 issue of the National Geographic Magazine and sent in by Alan Hart of Burlington, Vermont.

Hart, too, was probably surprised, for literature in response to his request was promptly mailed out to him . . . not 1927 literature, but the latest pamphlets and brochures relating to travel on the North Coast Limited.



MEALS aboard the North Coast Limited diner are an adventure in good eating.

Great Big Potatoes Have Long History as House Specialty on NP

When is the lowly spud not a lowly spud? Why, when it is served in Northern Pacific dining cars, of course.

In late September, Washington potato growers in the Yakima and Kittitas Valley regions begin harvesting a variety known as the Netted Gem. And as they do, they set aside the king size specimens that weigh between 20 and 24 ounces. For these are potatoes with a future.

The No. 1 Gem Bakers as the "big boys" are called, are destined to become the famous Great Big Baked Potatoes which have been served on NP trains for half a century. Each year dining car patrons consumed thousands of pounds of the magnificent tubers.

Shortly after the turn of the century the irrigated areas of Washington began producing potatoes of unbelievable size. However, the American housewife continued to prefer a small, delicate potato that was easy to peel and quick to bake. The larger spuds were rejected and farmers did not find a ready market for the outsize potatoes.

A member of Northern Pacific's commissary department heard of the large potatoes and decided to investigate the possibilities for use on NP

diners. The result, of course, is history. It was learned that this variety was peculiarly adapted to baking and came from the oven snow white and mealy. A crown of melting butter made it truly a delicacy.

Depending on the season, the Great Big Baked Potato requires from 1½ to 2 hours in the oven. The freshly harvested ones, containing their full quota of moisture, require even more baking time. Later on, the period of baking is shortened and a pan of water is placed in the oven with the potatoes to insure the correct amount of moisture and proper texture.

While the baked potato is probably the most famous of the gourmet's specialties served on NP diners, the chefs who prepare the meals have established a long and envious record of serving tasty, delicious meals to travelers aboard NP trains.

Japan Tour

Continued from page 1

Anyone planning to take this tour should have a valid passport . . . certain visas . . . smallpox vaccination . . . cholera inoculation.

For additional information and details contact Northern Pacific, Burlington of Japan Air Lines.



Carol Ann Emery



Johari Hemenway



Joy M. Claybrook

New Stewardess Appointments

Three new stewardesses have been appointed in recent months to serve aboard the Northern Pacific's famous North Coast Limited.

Carol A. Emery, daughter of Dr. and Mrs. Leonard C. Emery of Altadena, Calif., began her service in May.

She is a graduate of the University of California at Santa Barbara where she earned her B.A. Degree.

Miss Johari Hemenway of Seattle, also began her service with Northern Pacific in May. Miss Hemenway graduated from Roosevelt High School in 1963. After attending Pacific University in Forest Grove, Ore., she attended the University of Washington in Seattle and received her B.A. Degree in Sociology from Pacific University.

Joy M. Claybrook, joined Northern Pacific in August. She is the daughter of Mr. and Mrs. G. C. Claybrook of Sacramento, Calif.

Miss Claybrook is a graduate of the University of Washington in Seattle, where she received her B.A. Degree in History and English Literature.

NP Offers Wide Choice of Tours

Hawaii

A 17-day deluxe Hawaiian Holiday tour of Hawaii and the Outer Islands is scheduled Jan. 12 to Jan. 29, 1969.

It includes six days at Waikiki and seven days in the Outer Islands.

Tour cost from the Twin Cities is \$795. This includes round trip rail fare between the Twin Cities and Portland, and round trip between Portland and Hawaii via Pan American airlines.

The seventeen-day escorted tour is filled with good living, exotic scenery, wonderful companionship, sightseeing and languid days and nights in the Pacific Paradise of Hawaii.

Tour participants will visit Oahu, Kauai, Maui and Hawaii Islands. Highlights include the Eastman Kodak Hula show, trip to Kaleakala Crater, sightseeing trip on the Capt. Cook III. to Capt. Cook's monument, glass bottom boat trip and all day sightseeing trip from Kona to Hila via Black Sand Beach.

Yellowstone

For the traveler who has been everywhere and seen everything, Northern Pacific's 7-day Yellowstone Snowmobile Holiday offers a new and novel experience.

The Snowmobile Tour season starts Dec. 14 and continues through Feb. 20, 1969.

Tour schedules call for departures from Chicago, Twin Cities, Spokane, Portland and Seattle.

Rail passengers, either from the east or west, detrain at Livingston, Mont., and travel by bus to Mammoth Motor Inn in Yellowstone Park.

There's a trip from Mammoth to Old Faithful, an all day tour in the enclosed, heated snowmobile.

The second day, by bus for a 100-mile ride to Cook City. This tour covers country filled with elk, deer, moose and buffalo.

Third day tour by snowmobile to the Grand Canyon of the Yellowstone. For information and details, contact your Northern Pacific Passenger agent.

Florida

This escorted Florida Sunland Tour from Seattle and Portland is scheduled from November 21 to December 3, 1968.

It combines rail, plane and bus travel and includes all round trip fares.

From Seattle-Portland the tour is priced from \$485 up. From Spokane from \$474 up.

The tour includes seven full days in Florida and visits to Jacksonville, Silver Springs and Weeki Wachee Springs where the famous Underwater Theatre ballet will be viewed.

Tampa is on the itinerary, as well as the famous Cypress Gardens and a thrilling Cypress Gardens water show.

There are three nights in Miami at the famous Deauville Hotel and a visit to Cape Kennedy launching sites.

Last day in Florida features a visit to Daytona Beach and St. Augustine, oldest city in the United States.

For information and details contact your Northern Pacific Passenger Agent

NP Adds a New Twist to Transcontinental Rail Travel

Along with a schedule of 7-day snowmobile tours in Yellowstone Park, Northern Pacific is offering a special 2-day snowmobile holiday in Yellowstone that can be fitted into the schedule of almost any transcontinental traveler on the North Coast Limited or the Mainstreeter.

Eastbound travelers can detrain at Bozeman, Mont., and go to Yellowstone by bus to West Yellowstone. Next morning, it's off for Mammoth via Old Faithful traveling through the great park wrapped in its winter mantle of snow. Wind up of the trip comes with an overnight stay and by bus to Livingston the next morning to board the train.

Westbound travelers detrain at Livingston and go by bus or car to Mammoth for overnight. In the morning start of the all day tour of the park, winding up at West Yellowstone, for overnight at the Morris Motel, then boarding the train at Bozeman for the trip west.

This attractive, short-term stopover trip includes twin bedded room with bath, transportation to and including transportation in the Park, two nights' lodging and five meals . . . Cost is only \$57.03 per person with twin bedded rooms and \$67.08 per person with single room accommodations.

For information and details, contact your Northern Pacific Passenger Representative.

Slumber Coach Popular Travel Bargain

The sleek, streamlined Slumbercoaches on Northern Pacific's famous North Coast Limited and the streamlined Mainstreeter, provide the utmost in privacy and comfort. Low cost Slumbercoach accommodations . . . they can be purchased at small extra cost on a regular coach ticket . . . provide the traveler with his own private room, a seat by the window, individual temperature and air conditioning controls, private toilet and wash basin.

Slumbercoach rooms are available for single or double occupancy. Each Slumbercoach has eight double rooms and 24 single rooms.

Service is available on both the North Coast Limited and the Mainstreeter between Chicago, Twin Cities, Seattle and Portland.

Fishing Regulation Change Proposed for Yellowstone Park

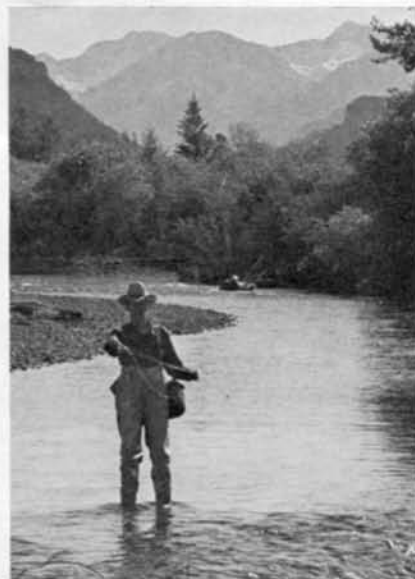
Extensive studies in the fisheries program for Yellowstone National Park over the past several years have resulted in a new proposed fishing regulation for the Park, according to Supt. Jack K. Anderson.

The new amendment provides that no bait fish, worms, insects, minnows, fish eggs, or other organic matter will be used in the Park, effective May 28, 1969.

To prevent deterioration of Yellowstone's renowned fishing, Park officials have proposed that only artificial lures or flies be used.

Restrictions on the use of baits are considered more satisfactory than drastically reducing creel limits.

The goal of the fisheries management program in Yellowstone National Park is to provide the visitor with a high quality angling experience.



FISHING in Yellowstone is a never-to-be-forgotten experience.



SNACK-TIME in the Lounge-In-The-Sky Dome car as the magnificent scenery rolls by in a continuing panorama of beauty.

Hospitality Hour

Travelers on Northern Pacific's famous Vista-Dome North Coast Limited are high in their praise of the railroad's complimentary hospitality hour.

The snack-time program, initiated some months ago, provides for NP travelers on the North Coast Limited a variety of snacks including popcorn, pretzels, crackers and a tasty "dip" for all passengers on the train . . . and "it's on the house."

Hospitality hour for Pullman passengers is usually during the late

afternoon with snacks served in the exciting Lounge-In-The-Sky Dome car.

Hospitality hour for coach passengers is early evening. Snacks are served in the famous Travelers Rest with candy and light snacks for the children.

"Hospitality", it's more than a word on Northern Pacific. The friendly and courteous train crew and Sue the Stewardess make every effort to see that passengers on the North Coast Limited enjoy an adventure in relaxed and pleasant travel.