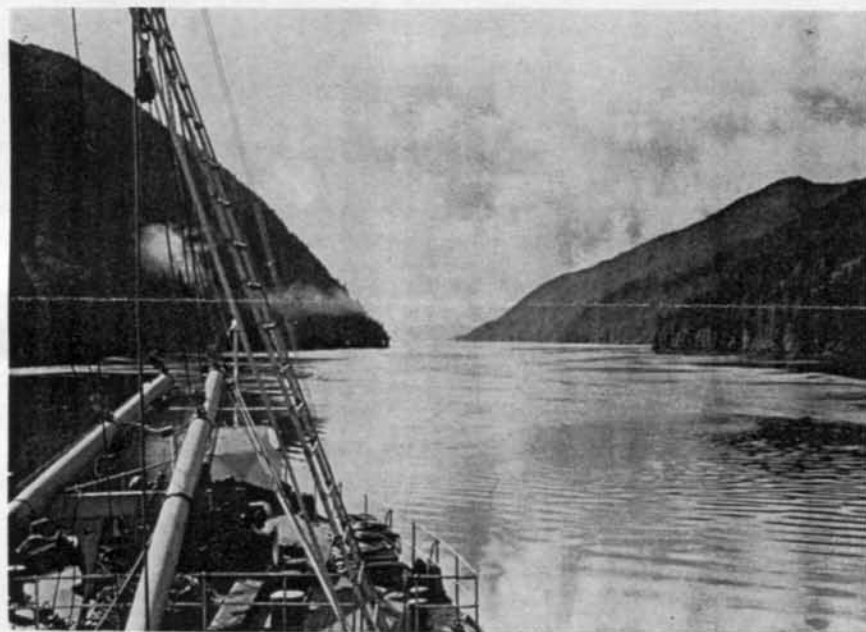


THE NORTH COASTER

NORTHERN PACIFIC RAILWAY
Route of the *Vista-Dome* NORTH COAST LIMITED

Volume 37 Number 1

January-February, 1966



ALASKAN TOURS—The placid waters of the sheltered Inside Passage provide a sea journey which is unique. The scenic grandeur of an Alaskan cruise is beyond compare. Northern Pacific Railway will again participate in Alaskan tours this season.

NP to Participate in Scheduled Alaskan Tours During 1966 Season

Northern Pacific will participate in 29 escorted Alaskan cruise tours scheduled by various religious organizations, farm and grange associations and individual groups during the 1966 season, NP passenger traffic manager F. G. Scott recently announced.

"Alaska, 'Land of the Midnight Sun', has always thrilled and delighted the traveler with its majestic scenery," said Scott, "and the Northern Pacific is happy to participate in the tours again this year."

A land of great contrasts and primitive beauty, the 49th state affords the opportunity to see great glaciers, endless forests, spectacular displays of the Northern Lights, quaint Indian villages and flourishing modern cities. Cool shadowy fjords, waterfalls crashing into the sea and towering mountain peaks rising from the water's edge may be seen along the rugged Pacific coastline and the Inside Passage cruise to Skagway.

Starting in June and extending into

September, the cruise tours combine a completely planned, escorted vacation trip by rail and sea to Alaska via the Pacific Northwest. Rail transportation takes the tourist west from Chicago over scenic Northern Pacific country to Vancouver, British Columbia, embarkation point to the North Country.

From Vancouver to Skagway, Alaska, luxurious cruise ships of the Canadian National Steamship Lines, the S. S. Princess Patricia and Prince George, sail over a thousand miles through the Inside Passage, the old sea road whose beginnings are lost in antiquity.

Never during the voyage is the ship out of sight of land and islands. Forests, mountain peaks and glaciers offer a continuing panorama of outdoor enchantment. Cruise stops are made at towns whose names are

Alaskan Cruises

Continued on page 2

NP Vancouver Traffic Office in New Quarters

Northern Pacific will move its Vancouver, B. C., traffic office to room 516 in the Stock Exchange Building at 475 Howe St., effective March 1, 1966, M. L. Thomson, NP's western passenger traffic manager in Seattle, announced recently.

Northern Pacific's new Vancouver office is a part of the current modernization and renovation program of the Stock Exchange Building. NP office improvements include an acoustical tile ceiling, modern fluorescent lighting and new furniture. The traffic office was formerly in room 207 at the present location.

"Upgrading of the Stock Exchange Building and modernization of NP's new traffic office will enable Vancouver general agent J. M. Richmond and his staff to better serve the traveling and shipping public, and improve our position among rail carriers in the British Columbia area," Thomson said.

NP Passenger Revenues Continue Upward Trend

Northern Pacific passenger revenues for 1965 were up 5.8 per cent over 1964, according to F. G. Scott, passenger traffic manager for the railroad.

The gain is a continuation of a rising passenger trend that began in 1959. NP has had gains in passenger revenue each year since, with the exception of 1963 when figures dropped from the high 1962 figures which were due primarily to the World's Fair in Seattle.

"The secret" says Scott, "is in promoting passenger business and running one of the finest trains in the entire nation. People like to travel NP with the friendly, courteous crews on our trains."



Published by the Passenger Traffic Department
NORTHERN PACIFIC RAILWAY, ST. PAUL, MINN.

F. G. SCOTT - - - Passenger Traffic Manager
L. HOLMSTROM - - - Asst. Pass. Traffic Mgr.
M. L. THOMSON - - - Western Pass. Traffic Mgr.
G. W. SORENSEN - - - - - Editor

MADE IN U. S. A. 6250



LILAC FESTIVAL PARADE—Colorful floats, part of 175 units participating in the 1965 Armed Forces Grand Parade, move along First Avenue past Northern Pacific's Spokane station. The parade is one of three staged during Spokane's Lilac Festival to be held May 14-22 this year.

Nation's Railroads Extend Reduced Furlough Fares

Reduced furlough fares for military personnel traveling in uniform at their own expense have been extended indefinitely by the nation's railroads.

Earl B. Padrick, chairman of the Interterritorial Military Committee, acting on behalf of all U. S. railroads, announced the extension. Existing furlough fare reductions would have expired on December 31.

The railroad action will continue one-way and round-trip coach fares for furloughed military personnel at savings of as much as 50 per cent, Padrick said. Also eligible for the special rates are students at the Army, Navy, Air Force and Coast Guard academies, ROTC senior cadets and foreign military students at U. S. installations.

Alaskan Cruises

Continued from page 1

steeped in history — Prince Rupert, Ketchikan, Juneau, Wrangell and Skagway.

At Skagway, tourists may take a rail trip back into the Klondike over the "Trail of '98" to Carcross aboard the narrow gauge White Pass and Yukon Railway.

Enroute to Vancouver, sightseeing stops are made at Glacier Park, the Canadian Rockies and Seattle. Return trips include escorted tours of Victoria, B. C., with ferry ride from Vancouver to Victoria, steamer journey into Puget Sound enroute to Seattle, and a visit to Mt. Rainier National Park.

Northern Pacific provides North Coast Limited Vista-Dome service both ways between the Twin Cities and Seattle for the Alaskan tours.

Spokane and Puyallup Valley Stage Traditional Spring Flower Festivals

Each spring in the State of Washington, two traditional celebrations are staged in honor of the early blooming daffodil and lilac, flowers which have brought fame to the Pacific Northwest.

Beginning in February and continuing through mid-April, the blooming of more than 300 varieties of daffodils in the Puyallup Valley signals the season of the Daffodil Festival. In May, the city of Spokane rolls out its "royal" lilac-colored welcome mat for thousands of visitors who join in its springtime celebration, the Lilac Festival. Both sites are served by Northern Pacific's Vista-Dome North Coast Limited.

Lilacs . . .

The 27th annual Lilac Festival, to be held May 14-22, gives promise of being one of the greatest in the history of the event.

A parade of parades, three parades with all the colorful elements that make a parade a thrilling never-to-be-forgotten spectacle, is planned for the Festival week. More than 5,000 children will participate in the Junior Parade which officially opens the celebration on Saturday, May 14. Pomp and pageantry highlight the spectacular Torchlight Parade, a glittering array of lighted units, Thursday, May 19.

Climaxing the festival on the last Saturday, May 21, is the giant Lilac Festival Armed Forces Grand Parade. Over 175 units displaying award-winning floats, a galaxy of queens and

Lilac Festival
Continued on page 4

Daffodils . . .

The daffodil season is a festive time in the communities of Tacoma, Puyallup, Sumner and Orting with the 33rd Puyallup Valley Daffodil Festival being staged March 26-April 3. This year's theme is "This Land of Ours."

Called the "Birthplace of Spring," the 15-mile Puyallup Valley, in Puget Sound's heartland of Washington State, offers a gold mine of festivities for spectators and visitors.

On Sunday, March 27, Northern Pacific will run a special train from Seattle and Tacoma to Orting where the Orting Lion's Club will host its second annual chicken barbecue in the civic park.

The Northern Pacific Daffodil special will visit the famous Hatch Ranch

Daffodil Festival
Continued on page 4

1965 Yellowstone Attendance Sets All-Time Record

Final attendance figures for Yellowstone National Park show that a record 2,062,476 persons visited the nation's oldest National Park in 1965, Park Superintendent John S. McLaughlin recently reported.

With the addition of December's total attendance, the previously announced new record represents an average gain of just under seven per cent over the previous year, a gain of 133,160 visitors. Up to July, travel was on a par with 1964, less than one per cent ahead, McLaughlin said. July visits were up 7.5 per cent, but it was the August rush, a whopping 14.8 per cent increase over 1964, that paved the way for the new record.

Yellowstone reached the two million mark on September 20, 1965, marking the first time in the history of the 93-year old park that 2,000,000 visitors have passed through the park's five entrances in a single season. It was eighteen years ago that Yellowstone topped the one million mark in visitors to the park.

Park Service Plans 50th Anniversary Celebration in 1966

The National Park Service is completing plans for a year-long celebration of its 50th birthday during 1966, Secretary of the Interior Stewart L. Udall has announced.

Events commemorating this golden anniversary will take place at all areas during 1966, National Park Service Director George B. Hartzog, Jr., said. Park service personnel will participate in local community activities, will invite the public to visit all National Park Service areas, and will inform the public of events scheduled for the observance.

Enacted by Congress on August 25, 1916, the National Park Service was then only a fraction of its present 26 million acres. Among its key properties, the park system includes Yellowstone, the first and largest national park, set aside in 1872 for preservation and public enjoyment.



MONTANA SKATERS—Gathered in the St. Paul Union depot, 15 members of the Montana Speed Skating Club arrive for the National Outdoor Speed Skating Championships during the recent St. Paul Winter Carnival. Northern Pacific princess Ellen Peham, left, welcomes the group on arrival from Butte aboard the Vista-Dome North Coast Limited.

1966 Officers Named at

Annual Passenger Clubs Elections

Among the passenger clubs around the country that have elected new officers for 1966, the following have announced new executives for the coming year:

New York

E. A. Harding of the Pennsylvania Road has been elected president of the General Eastern Passenger Agents Association of New York. Other officers chosen at the 43rd annual luncheon and business meeting were vice

president P. S. Jones, NYNH&H R.R.; treasurer J. E. McNamara of the Burlington Route; secretary Frank Knotts, C&O & B&O R.R., and assistant secretary R. R. Duncan of the Atlantic Coast Line.

Anaheim

Gene Haugh, TF&PA in Northern Pacific's Los Angeles office, was recently

Passenger Clubs
Continued on page 4



INTRODUCING Margaret Munis, left, and Norma Aldrich, newest stewardess-nurses now serving on board the Vista-Dome North Coast Limited. Miss Munis received her R.N. degree at Bakersfield College in her hometown of Bakersfield, Cal., in 1964. After graduation, she was an office nurse in Bakersfield before becoming a stewardess-nurse with the NP. Miss Aldrich, of Seattle, Wash., attended Portland State College before graduating from the University of Oregon School of Nursing at Portland in 1960. Prior to joining the Northern Pacific, she was employed by the San Mateo County Hospital, San Mateo, Cal., and the Northwest Hospital, Seattle.



WINTER VACATION—Alighting from Northern Pacific's **Vista-Dome North Coast Limited** at Livingston, Mont., are 31 relatives and friends of Mr. and Mrs. Con Douma, operators of the local Island Resort at Livingston. The Chicago area visitors spent an action-packed week at the resort recently touring Yellowstone Park, Bridger Bowl and enjoying winter sports in the Big Sky Country. The group was greeted at the station by a brass band and transported to the motel on an old fashioned hayrack.

Passenger Clubs

Continued from page 3

elected director of the Citrus Belt Traffic Club at its annual election at Anaheim, Cal.

Chicago

J. L. Weingarten of the Burlington Route was elected president of the Rail Sales Club at its luncheon-meeting election in Chicago; H. J. Spence of the Northern Pacific, vice president, and R. T. Schlude of Missouri Pacific, secretary-treasurer. Elected as directors for one-year terms are: B. L. Logan of the C&EI Ry., C. L. Froelich, DT&I R.R., and D. A. Lewis of the Illinois Terminal Railway. Outgoing president J. J. Craig of the TP&W will serve as ex-officio board member.

Washington, D. C.

New president of the Washington Passenger Association for 1966 is Charles E. Pugh of the Seaboard Railway. Great Northern's Kern Thornton and American Express's A. Ferraro were elected first and second vice presidents during the club's 49th annual banquet. Chosen as secretary-treasurer is AT&SF's John Farrell, and historian is C&O's (retired) Walter Knox. A. Finisdore of the Union Pacific; R. Fricka, AT&SF Ry., and PRR's M. Moffett are new members of the executive committee.

Lilac Festival

Continued from page 2

special celebrities parade before more than 150,000 spectators who will witness the two and one-half hours of



Kathy Swanson, 1965 Lilac Festival Queen

fun, music and festivity.

Between the parades, each of the eight Festival days are crammed full with activities designed for the young and old alike. Included are a Lilac and Spring Flower Show, a giant carnival, luncheons and banquets, and an exciting "Open House" at Spokane's famed Fairchild Air Force Base.



Daffodil Festival

Continued from page 2

at Alderton, visit fields including the Staatz Farm and view Williams Brothers bulb enterprise enroute to Orting. The train will arrive at Orting in time for a band concert and barbecue.

Early-day mansions are also visible from the train and a combination of daffodils, ancient apple trees at the Hatch Ranch, historic hop barns of a once flourishing predecessor of the bulb industry, and Mt. Rainier provide subjects for both photographers and artists.

The Festival's three-city Grande Parade of daffodil floats will be held April 2 in Tacoma, Puyallup and Sumner. March 28 is Queen coronation night in Sumner; a three-day Daffodil Flower Show will be held in Puyallup's Memorial Building, and the all-Puget Sound Marine Regatta of decorated cruisers, sailboats and fishing



1965 Daffodil Queen Kay Bryson

craft will be staged April 3 on Tacoma's Commencement Bay.

Rounding out the many events are Rainier Council's big square dance jamboree at the Tacoma Armory, a ball for the Festival Queen and young adults, Daffodil Festival Relays held in Lincoln Bowl, and the traditional community ham dinner at Puyallup on April 3.