

THE NORTH COASTER

NORTHERN PACIFIC RAILWAY
Route of the *Vista-Dome* NORTH COAST LIMITED

Volume 36 Number 6

November-December, 1965

New Seattle Ticket Office Centralizes NP Passenger Services

In a move to streamline operations for more efficient customer service, Northern Pacific recently moved its Seattle traffic and city ticket offices to a new downtown location in the Central Building, 800-3rd Ave.

The move centralizes reservations, ticket counter sales, and traffic solicitation operations in an atmosphere of new and modern furnishings all designed for providing a deluxe, one-stop customer service center.

"In addition, the consolidation of various service departments will accelerate the handling of telephone inquiries, ticket deliveries and mail-out of tickets," F. G. Scott, Northern Pacific passenger traffic manager, said.

The new office is handsomely decorated with dark oak wood paneling, gold carpeting, modern lighting, and numerous travel pictures all designed to motivate and emphasize "Discover America" by rail travel.



NEW SEATTLE OFFICE—Customers at Northern Pacific's newly relocated Seattle Ticket Office enter into this modern, attractively decorated office. Pictured are ticket agent R. W. Geiermann assisting a patron at the ticket counter, ticket salesman Frank Waldo, center, and cashier-ticket salesman Bob Bruno.

NP Announces Deferred Payment Plan for Rail Travel

Northern Pacific Railway Company will honor American Express Credit Cards for the purchase of rail transportation on a deferred payment plan

effective December 15, F. G. Scott, NP passenger traffic manager, has announced.

While Northern Pacific has honored American Express Credit Cards in the past, rail charges billed to card holders were payable on receipt of the monthly statement. This new agreement, allowing travelers to pay rail fare in three, six, nine or twelve monthly payments, will make it possible for more people to enjoy the convenience of rail travel.

Under the new agreement with American Express Company, the card holder may elect, at the time of purchase, to pay currently or to use the deferred payment plan. The service charge on the 12-months plan averages 50¢ per month per \$100.

American Express Credit Cards are honored at all Northern Pacific ticket offices and may be used for rail fare, Pullman accommodations, meals and refreshments on the diner.





Published by the Passenger Traffic Department
NORTHERN PACIFIC RAILWAY, ST. PAUL, MINN.

F. G. SCOTT - - - Passenger Traffic Manager
L. HOLMSTROM - - - Asst. Pass. Traffic Mgr.
M. L. THOMSON - - - Western Pass. Traffic Mgr.
G. W. SORENSEN - - - - - Editor

MADE IN U. S. A. 6250

Yellowstone Park Exceeds 2 Million Visitors to Date

Yellowstone National Park tourist visits again set a new record during the 1965 season, park officials have just announced.

Released figures show 2,060,896 visitors entered the park for the 11-month period ending Nov. 30. This represents a gain of 6.8 per cent, or 131,983 more visits than a year ago at the same time.

Yellowstone attendance this season passed the 2 million mark for the first time in its history. This is also the 18th straight year that more than 1 million visitors have toured the nation's oldest park.

Le Couteur Elected Cincy Club Leader

The Passenger Club of Cincinnati recently held its annual election party and the following members were elected to hold offices in 1966.

Heading the list of new officers is Eric H. LeCouteur, of Cincinnati's Fifth Third Union Trust Company, elected as new president. Paul Garland, ATSF Rwy., was elected vice president, and John V. Hewitt, Great Northern Railway, became the club's secretary-treasurer. Elected to the board of directors were: Wayfarer Travel Service's A. C. Gutekunst; Paul Byers, Cincinnati Union Terminal Company; Robert Horn, Canadian Pacific, and John Bischoff of the Cincinnati Post and Times Star.



ST. PAUL PRINCESS CROWNED—Ellen Peham is crowned Northern Pacific's 1966 Princess by St. Paul Winter Carnival Queen of Snows Carla Augst at company held ceremony as Boreas Rex XXIX Laurence W. Thulin, left, and Prime Minister John H. Kissinger look on. Employed in St. Paul's Disbursement Accounting, Miss Peham will represent the railway during the Winter Carnival Jan. 28-Feb. 6.

St. Paul Celebrates 80th Anniversary of Winter Carnival, Jan. 28-Feb. 6

Minnesota's capital city becomes the Winter Sports Capital of the Nation with the start of the 1966 St. Paul Winter Carnival January 28-Feb. 6. Visitors from near and far will join St. Paulites in celebration of this year's theme, "Festival USA-66", the 80th anniversary of the famed winter spectacle.

Began in 1886, the Carnival revolves around the legendary King Boreas and his adversary Vulcanus Rex, the Fire King, who overthrows the "Rollicking Realm" of Boreas at the Carnival's end. During the modern-day spoof of ancient mythology, Boreas reigns for 10 fun-filled days encompassing a wide variety of indoor and outdoor festivities, providing interest and entertainment for Carnival goers.

The 1966 Winter Carnival officially opens on Friday, January 28, with Coronation of King Boreas XXX in the St. Paul auditorium, scene of many scheduled events. To be held in the 10,000 seat-capacity hall are the three-day Minnesota State Indoor Archery Tournament, the World's Largest Square Dance Festival (which attracts 2,500 dancers annu-

ally), and the finals of the National Majorette Contest, featuring the nation's top twirlers.

Another top-flight feature is the crowning of the 1966 Queen of Snows. This is scheduled for Feb. 1, at a colorful coronation pageant staged in the St. Paul arena.

Two eagerly-awaited spectacles, the Grande parade on opening Saturday and the mid-week Torchlight parade, add to the excitement of the Carnival. Guest stars of the entertainment world will appear in special shows, appearances around town, and as Grand Marshals of the parades.

A variety of events are held on nearby frozen lakes including Mutt Races for children, a Hot Air Balloon race, Dog Sled team and Snomobile races. Thousands of spectators may watch the thrilling National Outdoor Speed Skating Championships, annually raced over Lake Como while others participate in the World's Original Ice Fishing Contest at White Bear Lake.

Winter Carnival

Continued on page 4

Garrison, Former Yellowstone Official Promoted

Lemuel A. (Lon) Garrison, former superintendent of Yellowstone National Park, has been appointed north-east regional director of the National Park Service, George B. Hartzog, park service director, has announced.

Garrison has been serving as mid-west regional director. He succeeds Ronald F. Lee who retired after 32 years in the national park service.

Garrison, 61, received his A.B. degree from Stanford University in 1932, and began his national park service career in 1935 as a park ranger at Yosemite National Park. He has held successive park supervisory positions until his appointment in 1956 as Yellowstone Park superintendent. In 1964, he became midwestern regional director with headquarters at Omaha, Nebr.

In 1962, he received the Department of Interior's highest honor, the distinguished service award, presented by Secretary Udall. As north-east regional director, Garrison will be stationed at Philadelphia, Pa.

Closing Date Set For NP Fruit Cakes

Holiday fruit cakes, a traditional feature served aboard Northern Pacific trains during the Christmas season, will be available for sale to the public until the New Year, W. F. Paar, NP dining car superintendent, recently announced.

Orders for the famous cakes, made from an original recipe adopted by the railway in 1873 and still used today, are filled at the St. Paul Commissary bake shop. Packed in colorful Yuletide tins decorated in winter scenes, the cakes make delightful Christmas gifts.

As a last reminder, orders should be addressed to W. F. Paar, dining car superintendent, Northern Pacific Railway, St. Paul, Minn. 55101. Orders should include \$3.90 for a three-pound tin and \$6.50 for the five-pounders, express or parcel post prepaid. For shipment outside the United States, add an additional \$1.75.



SCHWEITZER BASIN viewed from one of lower ski slopes overlooking handsome three-story day lodge and parking lots located near Sandpoint, Idaho. In distance is part of beautiful Lake Pend Oreille surrounded by Cabinet and Bitter Root mountain ranges. Lower terminal of mile-long double chair lift is seen at right center.

Schweitzer Adds Two Ski Instructors as Area Improves Lodging Facilities

Jim Barrier and Erich Hotter, two well-known names in skiing, have been added to the staff of Schweitzer Basin Ski School for the 1965-66 season. Bob Aavedal has returned as school director.

Besides being an instructor, Hotter, a native Austrian, will coach Schweitzer's junior racer training program. Highly experienced, he has served four winter seasons as youth trainer for Austrian and Tirolian ski organizations. He is also a qualified trainer of ski instructors, mountain guide, and a state-certified ski instructor.

Barrier, a member of the 1960 U.S. Olympic team at Squaw Valley, topped all American skiers that same year in combined events in Sun Valley's Harriman Cup races. Entering the Army, he placed second among U.S. skiers in competitive skiing at Chamonix, France, in 1960.

Back in the U.S., he won additional ski honors at the New England Championships, Harriman Cup races, and National Championships at Anchorage, Alaska. Barrier spent 1964 racing for the armed forces in Europe and in this country, before making his last appearances in Italy and the CISM Games in Switzerland last fall.

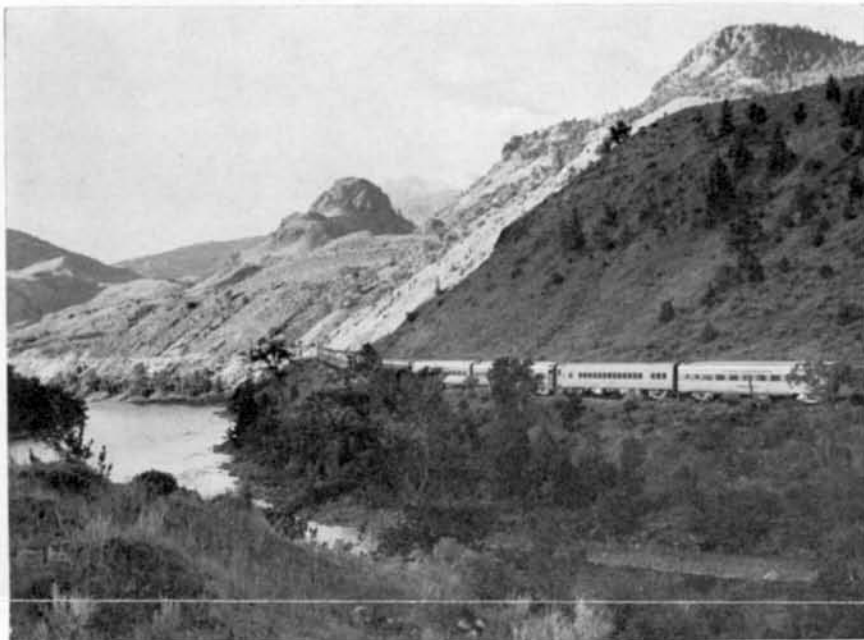
An extensive program of improve-

ments and expansion has taken place at the North Idaho ski area. A major road improvement project was completed and an additional lift was installed. Skiers will also find a variety of new lodging and eating facilities for the 1965-66 season.

North Shore Lodge on Lake Pend Oreille beach in Sandpoint features larger-than-usual rooms, and has a dining room and cocktail lounge with marine views. The Travelers Motel has added a number of new units, and operates a dining room, cocktail lounge and Alpine room.

Two of the new facilities are of special interest to ski clubs and organized groups because they offer dormitory accommodations. The Ski Loft in downtown Sandpoint can sleep 60. On nearby Contest Point, Pend d'Oreille Lodge, a beautiful native cedar structure overlooking Lake Pend Oreille, has a huge lobby with large fireplace, lounge, dining room, dance area, private rooms and dormitory. The latter can accommodate up to 150 skiers.

Schweitzer Basin, located near Sandpoint, Idaho, is an overnight trip on Northern Pacific's *Mainstreet* from Seattle, Portland and Tacoma.



A SPECIAL TOUR TRAIN on its way to Yellowstone National Park winds around the edge of Yankee Dime Canyon alongside the Yellowstone River. Northern Pacific will again conduct special Yellowstone tours this year.

Northern Pacific 1966 Tour Plans Aim at Continuing Passenger Gains

Sparked by a seven per cent increase in passenger revenue for 1965, the Northern Pacific Railway Company is well along on 1966 plans aimed at chalking up continuing gains in the coming year.

High on the agenda for next year, are re-runs of the successful pre-season and post-season Yellowstone tours of 1965 which included round-trip coach-class rail ticket, all meals in the diner, all meals and lodging in Yellowstone, bus transportation from Livingston to Gardiner, Montana, plus trip through Yellowstone Park and Cody to Billings, and services of an experienced escort, baggage handling and gratuities.

With last year's pre and post-season Yellowstone tours accounting for more than 1,250 persons, Northern Pacific is planning to double the opportunities for vacationers to visit the wonderland that is Yellowstone, the nation's largest national park. Two pre-season and two post-season Yellowstone tours are scheduled for 1966. While actual dates have not yet

been set, it is expected that the pre-season tours will be early in June and the post-season tours early in September. Firm dates will be announced in an early issue of the *North Coaster*.

Another exciting package is the Pacific Northwest-California Circle Tour. This rail trip of more than 5,000 miles offers the vacationer the opportunity to see a wide contrast in the finest scenery America has to offer . . . rolling plains, rugged mountains, Puget Sound, Seattle, the Pacific coastline, San Francisco, Feather River Canyon and a host of other scenic wonders that will live for a lifetime in the memories of vacationers.

The Pacific Northwest-California Circle Tour will carry vacationers over five different lines, the Chicago, Burlington and Quincy, Northern Pacific, Southern Pacific, Western Pacific and the Denver, Rio Grande Western.

Along with tours to take travelers to the most scenic areas in the country, NP has plans for additional cars to handle the increased volume of business expected in 1966. To be an-

nounced soon is the schedule for four all-bedroom cars to be used between Chicago and Livingston, Mont. In addition, six recently acquired light-weight coaches will be inaugurated in cross-continental service by Northern Pacific.

F. G. Scott, passenger traffic manager for the Northern Pacific, said of next year's plans, "Tour business, both independent tours and travel agency tours, was up in 1965. With increased facilities and enthusiastic plans for 1966, we are confident we can continue the gain pattern in passenger revenues."

Trans-Missouri Club Elects 1966 Officers

Frank M. Wisnew, general agent passenger department, Burlington Road, has been elected president of the Trans-Missouri Passenger Club for 1966 at the club's December meeting at Omaha.

Elected as vice president was P. J. McMahon, agent-foreman for Pullman Company with W. M. Higgins, tour sales representative, Rock Island RR, named as secretary. New treasurer is Tom Wotherspoon, retired president of Midwest Asbestos Company.

Winter Carnival

Continued from page 2

Throughout the Carnival, outdoor funsters whiz down a three-block long toboggan slide in front of the State Capitol. A huge downtown ice rink offers skating thrills to all ages. Treasure hunt fever lasts for one frantic week as thousands scour the countryside searching and digging for Boreas' buried medallion worth \$2,500 to the clue-minded finder. Eight performances of the Ice Capades round out the closing days of the Carnival.

On the festival's final day, St. Paulites relax and watch the nation's leading ski jumpers compete in the Winter Carnival Ski Jumping Tournament at Battle Creek slide.