

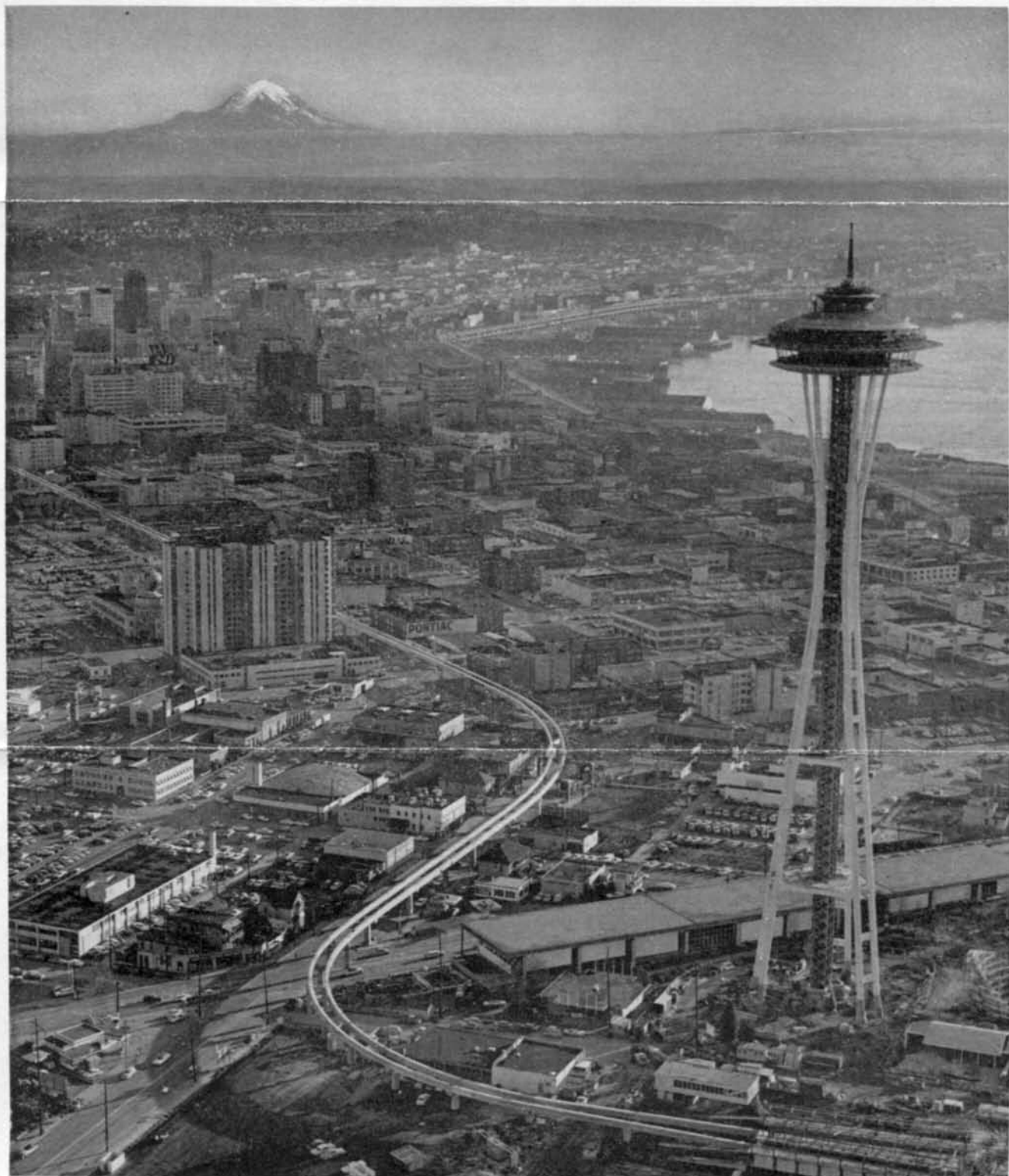
THE NORTH COASTER

NORTHERN PACIFIC RAILWAY
Route of the *Vista-Dome* NORTH COAST LIMITED

Volume 33 Number 1

January-February, 1962

Seattle World's Fair Nears 'Lift-Off'



(See Page 2)

—Seattle Post-Intelligencer Photo



Published by the Passenger Traffic Department
NORTHERN PACIFIC RAILWAY, ST. PAUL, MINN.

G. W. RODINE - - Passenger Traffic Manager
L. HOLMSTROM - - General Passenger Agent
F. G. SCOTT - - Western Pass. Traffic Mgr.
WM. A. MCKENZIE - - - - - Editor

MADE IN U. S. A. 6250

Daffodil Fete Will Salute World's Fair

Washington State's Puyallup Valley will celebrate its 29th Annual Daffodil Festival from April 2 through the 8th with a "Daffodils Salute Century 21" theme.

Valley communities of Tacoma, Puyallup, Sumner and Orting will join



Miss Marshall

in this tribute to the coming exposition in Seattle (April 21 to October 21).

A program of "sea level to ski level" events will get underway on opening day with the selection and coronation in Sumner of the Festival queen. Among the candidates for the 1962 crown is Janet Marshall, 18-year-old Sumner high school senior and daughter of William J. Marshall, Northern Pacific locomotive engineer.

New to this year's program is a Junior Parade along Pacific Avenue, Tacoma, and the Queen's Ball at the Winthrop hotel. Both will be staged on April 6.

This festival, one of the earliest outdoor floral events in the nation each year, is staged in the heart of America's daffodil country.

Century 21 Exposition Provides Preview of Man's Future Life

Less than two months remains of a countdown begun more than a year ago when Seattle started to tell off the days until it would launch its forward looking World's Fair into orbit this April 21.

With "Man in the Space Age" as its theme, the Century 21 Exposition will give an estimated 10,000,000-plus fair-goers an \$80,000,000 glimpse of man's environment and way of life in the 21st Century. Comprising the heart of the Exposition are the "five world's of our lives," the World of Science, World of Century 21, World of Commerce and Industry, World of Art and the World of Entertainment.

Fully one-eighth of the Fair's budget will be spent by the Federal Government in producing the U. S. Science Exhibit. One highlight of this largest-ever science display will be the Boeing company's Spacearium, in which visitors can make a simulated flight into outer space. This journey includes a pass at the sun, hovering over Mars, a side trip through the rings of Saturn, slipping through the Milky Way and a peek at the moon.

The World of Century 21, theme exhibit of the fair, will be housed in the gigantic Coliseum. Here are four acres of unobstructed space under a suspended roof.

A trip through the 21st Century will take exactly 21 minutes. Each group of 100 persons will start the journey aboard a "bubble-ator," a spherical elevator that simulates the effect of moving into space, an effect achieved through the use of electronics, sound and lighting systems.

Private enterprise will show its ingenuity in concepts of the future in a group of World of Commerce and Industry exhibits covering communications, travel, transport, business, use of natural resources, manufacturing and service industries that will provide a new way of life in the next century.

The World of Art will encompass one of the finest collections of masterpieces, international and national con-

Indianapolis Passenger Club Elects Wilder President

R. M. Wilder, Avis System, has been elected president of the Indianapolis Passenger Club for 1962. He succeeds F. W. Christena, PRR, who was named to the advisory board.

Burlington's J. B. Conway was elected vice president, and B. C. Wesselman of Indianapolis Union Railway was named secretary-treasurer. Other members chosen for the advisory board were L. H. Dyer, IUR, and Roy Taylor, Milwaukee Road.

temporary, rare Northwest Indian art re-imported from Europe, and industrial art, ever displayed in a single exhibit hall. A special Fine Arts Exhibition Hall has been constructed to house the art collections in a 40,400-square foot area.

A continuous parade of internationally known performing artists will be at the core of the World of Entertainment. Staging of the events will be in the 3,100-seat Concert Hall, a 5,500-seat arena, the huge 12,000-seat stadium and in a small 800-seat theater. Performers will include such

Continued on Page 4

NP Names H. J. Bond to Aberdeen GA Post

H. J. Bond, Traveling Freight and Passenger Agent for the Northern Pacific at Seattle, has been appointed General Agent at Aberdeen, Wash., effective Feb. 1.

Succeeding Bond at Seattle is E. H. Knowles, former TF&PA at Yakima, Wash. C. F. Moreland, City Freight and Passenger Agent, Seattle, succeeded Knowles, and R. D. Bartell took over Moreland's former position.

Bond, who joined the NP in Duluth, Minn., in 1926, has served in traffic offices at Walla Walla, Spokane and Yakima, Wash. He became City Freight and Passenger Agent in Seattle in 1957 and rose to TF&PA last year.

Knowles began his Northern Pacific service in 1940 as a telegrapher on the railway's Idaho division. He was named to the Yakima post in 1952.

Moreland joined the NP in 1956 following his graduation from Seattle University with a degree in transportation. He completed a two-year traffic training program, then worked in piggyback service in Seattle before being named CF&PA in 1959.

Jewell and Krisman Get New GA Posts as Walker Retires

S. A. Jewell, General Agent for the Northern Pacific at Oakland, has been appointed General Agent at Los Angeles to succeed D. F. Walker, who retired Jan. 1 after nearly 33 years of service with the railway.

J. V. Krisman, Traveling Freight and Passenger Agent out of the Los Angeles office, was named to succeed Jewell at Oakland, and E. J. Haugh, City Freight and Passenger Agent in L.A., moved up to Krisman's former post. Haugh was succeeded by R. G. Johnson, Chief Clerk.

After serving seven years with various steamship firms, Walker entered railway service with the NP as Chief Clerk in Los Angeles in 1929. Five years later he was named TF&PA, then rose to General Agent at Oakland in 1943. He returned to L.A. in 1946.

Jewell began his Northern Pacific service in the Los Angeles office in 1933 and moved to San Francisco seven years later as City Freight Agent. He became, successively, CF&PA and Commercial Agent before going to Oakland as General Agent in 1953.

Krisman joined the company at Los Angeles, also. After six years he was named Chief Clerk in 1940. He was promoted to TF&PA in 1945.

Haugh came to the NP at Seattle in 1949 and went to San Francisco as CF&PA in 1953. He was transferred to Los Angeles in that capacity three years later.

Johnson started with the railway in 1952 at Seattle, then spent a year at Aberdeen as Chief Clerk before assuming that post in L.A. in 1957.

Marion Snyder Becomes St. Louis Club President

Marion Snyder, Terminal Railroad association, was chosen president of the Passenger Club of St. Louis for 1962 in balloting that resulted in the election of three women and two men to the group's five offices.

Named to the other posts were MoPac's Lester Faudre, first vice president; Shirley Bauer, also of TRRA, second vice president; Virginia Miller, Wabash, secretary, and Vernon Paul of Illinois Central, treasurer.

A sixth office, that of third vice president, has been eliminated.



ROUND-UP OF DUDE RANCHER OFFICIALS—Officers and board members elected at the Dude Ranchers' Association 1961 convention in November gathered for their picture during a lull in convention proceedings at Livingston, Mont. Standing, left to right, are Mrs. Paul Christensen, president of Mrs. Dude Ranch, ladies division of the Association; Ted Schaffer, Two Bars Seven Ranch of Virginia Dale, Colo. and Wickenburg, Ariz., director; Howard Baker, Bar M Ranch, Gibbon, Ore., director; Les Shoemaker, CM Ranch, Dubois, Wyo., president and director; Tom Ferguson, Eaton's Ranch, Wolf, Wyo., director; Don Siggins, Siggins Triangle X Ranch, Cody, Wyo., director; Paul Christensen, 63 Ranch, Livingston, director; Mrs. Paul Van Cleve, Jr., Lazy K Bar Ranch, Big Timber, Mont., and Dick Hickey, Diamond L Bar Ranch, Lindbergh Lake, Mont., vice president. Front row, left to right, are Vic Benson, Jr., IXL Ranch, Dayton, Wyo., secretary-treasurer; Tom Whited, Sky Meadows Ranch, Cle Elum, Wash., director; Conna G. May, executive secretary, Billings; Jim Goodrich, 320 Ranch, Gallatin Gateway, Mont., and Cruse Black, head wrangler, Elkhorn Ranches, Montana and Arizona, directors.



NEW STAFF MEMBER Barbara Bidstrup, Laramie, Wyo., has been appointed to the staff of stewardess-nurses who serve aboard the Vista-Dome North Coast Limited. Miss Bidstrup attended grade school in Denver and is a graduate of Laramie high school. She was graduated from the University of Wyoming in 1960 with a bachelor's degree in nursing. Prior to joining the NP she was a nurse at Stormont-Vail hospital, Topeka, Kan., and Ivinson Memorial hospital, Laramie.

NP's Lemon Will Head Toronto Group in 1962

W. A. Lemon, General Agent for the Northern Pacific in Toronto, Canada, has been elected president of the Toronto Off-Line Railway Association for 1962.

New York Central's E. A. Mosgrove, District Freight Sales Manager, was chosen for vice president, and Frank Wall, Burlington General Agent, became treasurer.

The association comprises personnel from the 18 U. S. railroads which maintain offices in this city.

Wisconsin Club Chooses UP's Leland as President

G. D. Leland, Union Pacific, was elected president of the Wisconsin Passenger Club for 1962 at a meeting of the group in Milwaukee. He served as vice president last year.

Named to succeed him in that post was Northern Pacific's R. W. Thoenke. C. B. Crotty, Milwaukee Road, was re-elected to another term as secretary-treasurer.

Our Cover...

Until now, most pictures of Seattle's futuristic playground have shown artists' concepts or models. Our cover shows actual construction progress on the Space Needle and monorail system up to a few weeks ago, along with a "Needle's Eye" view of the city and Mount Rainier.



NP Appoints H. J. Spence St. Louis General Agent

H. J. Spence, Traveling Freight and Passenger Agent for the Northern Pacific at Detroit since 1953, has been appointed General Agent at St. Louis to succeed A. W. Jones, who retired Jan. 1 after more than 40 years of NP service.

In other changes, J. C. Austin, City Freight and Passenger Agent in the St. Louis office, has been named Assistant General Agent, and R. M. Montbriand, City Freight Agent at Fargo, N. D., has succeeded Spence at Detroit.

Jones, who has spent the past 31 years at St. Louis, started with the railway at Boston in 1921, and went to the Missouri city as Traveling Freight Agent eight years later. He rose to TF&PA in 1941 and to General Agent 10 years ago.

Spence got his start in NP's general freight department in St. Paul in 1941. He was transferred to Chicago in 1946, then was appointed TF&PA at Milwaukee the following year.

Austin's permanent employment with the railway began in 1927 at Duluth, Minn., as Soliciting Freight Agent. He had spent nearly two years in the operating department five years earlier. Appointments as TFA at Fargo, N. D., and Moorhead, Minn. followed, then he went to St. Louis as Chief Clerk in 1934. He became CF&PA there in 1952.

Montbriand joined the NP as an apprentice telegrapher at Tenstrike, Minn., in 1949 and came to the traffic department at Fargo eight years later. He was appointed Livestock Agent at West Fargo in 1959 and became City Freight Agent at Fargo two years ago.

Trans-Mo. Club Elevates UP's Lewis to Presidency

D. J. Lewis of the Union Pacific was elected president of the Trans-Missouri Passenger Club at the group's annual dinner in Omaha. He was a vice president last year.

Named to the three "veep" posts for 1962 were Ron Hemmingson, Travel & Transport, Inc.; William Reed, UP, and W. K. Gyer, Vanice Grain, Inc.

In other elections, B. G. Wright, Rock Island, was re-elected secretary, and Tom Wotherspoon, retired president of Midwest Asbestos, became treasurer.



MINNEAPOLIS CLUB ELECTS—Newly-elected officers of the Minneapolis Passenger Traffic Club for 1962 are, seated, E. J. O'Leary, GN Depot, president, and standing, left to right, N. E. Hennum, GN, secretary; R. D. Clayton, Rock Island Lines, vice president, and J. F. Strauss, Burlington, treasurer. O'Leary was vice president of the club last year.

Century 21

Continued from Page 2

world favorites as the Ceylon Dancers, the Old Vic Theatre, the Philadelphia Orchestra and Victor Borge.

In addition, entertainment will be provided by the "greatest" fair midway — called the Gayway — ever erected for a world's fair.

Admission price will be \$2 for adults and \$1 for children 12 years and under. Experts have estimated that the average expenditure per person will reach \$5.19, to cover the cost of admission, food and beverages, Gayway rides and fair souvenirs. Most of the exhibits, of course, will be free.

Transportation and accommodations in the Seattle area promise to raise the most problems. Indications now are that public transportation facilities will be taxed to the limit during the 184-day run of the fair.

Expo-Lodging, Inc., has promised to insure accommodations for more than 5 million out-of-state visitors, and the common features of most of the travel industry tours are assured accommodations, along with guided tours of the fair and the city, with the fair being either the primary attraction or a side trip.

Rutter Named Superintendent of Mt. Rainier National Park

Promotion of John A. Rutter from assistant superintendent to superintendent of Mount Rainier National Park has been announced by the Department of the Interior. He succeeds Preston P. Macy, who retired recently.



ST. PAUL CLUB OFFICERS—Saint Paul Passenger Association's new officers for 1962 include three from last year who moved up to higher offices. Shown are, seated, R. A. Strom, left, of 3M Co., president, and H. J. Carlson, Union Depot, vice president. Standing are, left, G. D. Landahl, Milwaukee Road, secretary, and M. L. Harnden, Northern Pacific, treasurer.

GEPAA Officers Advance; Sak Becomes President

L. G. Sak, Southern Railway System, was elected president of the General Eastern Passenger Agents Association of New York, and all other 1961 officers moved up following elections at the association's 40th annual luncheon in January.

Named to new posts were P. C. Servine, ACL, vice president; W. C. Havens, NP, treasurer; H. E. Worley, Pullman company, secretary, and A. E. Born, Canada steamship Lines, assistant secretary.