



# The North Coaster



Vol. XXXI Number 2

NORTHERN PACIFIC RAILWAY—Main Street of the Northwest

March-April, 1960

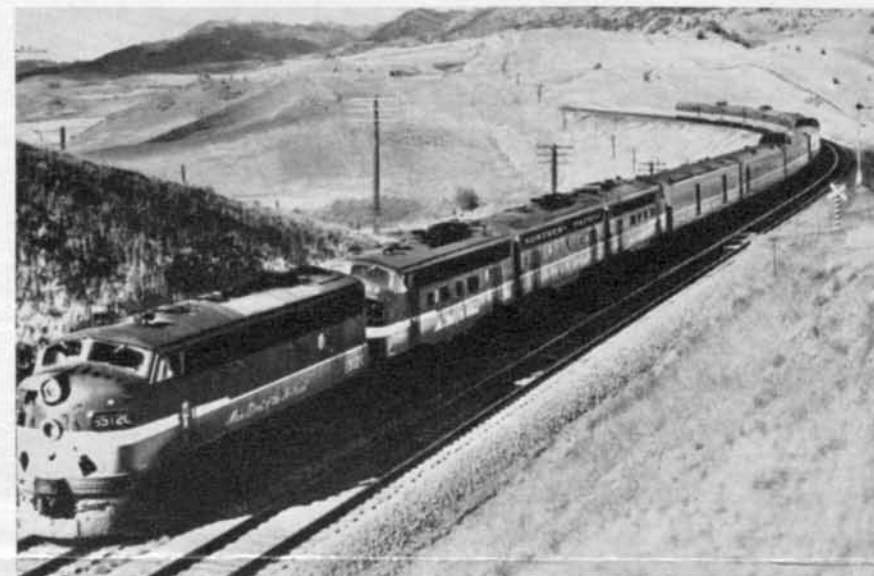
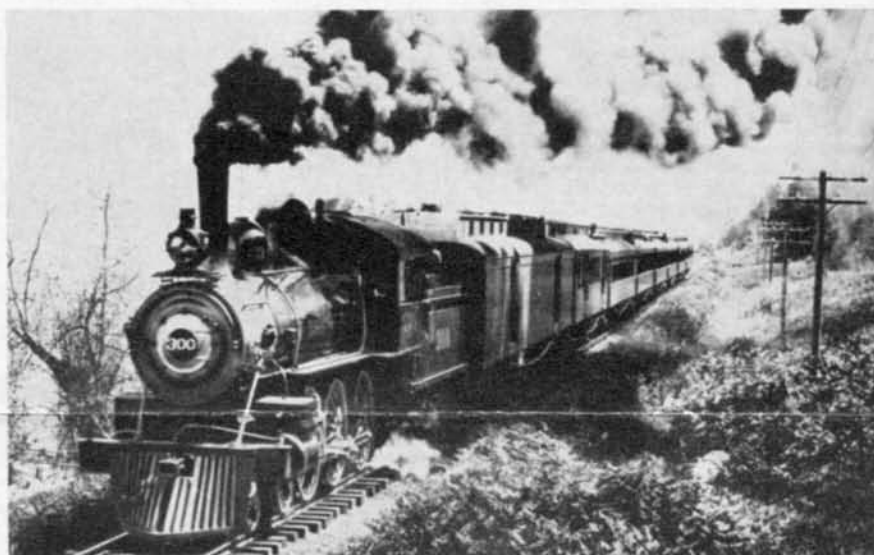
## North Coast Limited Made Historic Debut at Turn of Century

### Crack NP Train Introduced Electric Lights and Other Travel Frills to Northwest

Northern Pacific's crack Vista-Dome North Coast Limited—oldest transcontinental "name train" west of the Mississippi river still in service—will be 60 years old April 29.

The first electrically-lighted train to operate between the Midwest and the North Pacific Coast, the original North Coast Limited made its maiden run on April 29, 1900. This handsome train, described at the time as a "palace on wheels", introduced such travel comforts as steam heat, baths and barber-valet service to Northwest travelers.

The train was widely acclaimed by the press, public and travelers. Typical news-



### Transcontinental Party

There was a festive air aboard the Vista-Dome North Coast Limited April 29 as the Northern Pacific was host at a transcontinental birthday party.

Feminine passengers received corages and all passengers aboard were entertained at afternoon birthday parties in the dining cars on the various North Coast Limited trains streaking between Chicago and the North Pacific Coast in both directions. Adults had coffee and tea while the youngsters sipped hot chocolate. There were cookies and birthday cakes, too.

Each passenger also received a souvenir card certifying his presence on the train during the anniversary run. Hostesses at the parties were stewardess-nurses who are regular members of the train personnel.

paper comment was the following excerpt from one metropolitan daily:

"The train is one of the finest ever placed on railroad tracks. It consists of 8 cars, luxuriously finished in mahogany, with artistic decorations and the most elaborate equipment for the comfort of passengers."

A traveler on the original North Coast Limited in the summer of 1900 was Count Karl von Fersen of Berlin, Germany. Enroute west, when interviewed by a Fargo, N. D. Forum reporter, the count said:

"America has many surprises for us, and especially this magnificent overland train of the Northern Pacific railway. It is a veritable palace on wheels and excels anything I have seen on the Continent or in America."

Through the years, the "North Coast" has lived up to the high standard of ex-

(Continued on Page 4)

**THE NAME'S THE SAME**, but 60 years of service and progress separate the two trains shown above. Both are the North Coast Limited. The one at the top is the first; the other is today's streamlined Vista-Dome North Coast Limited. When the original was introduced in April, 1900, it provided many new and exclusive services to passengers traveling to the Pacific Coast. Such service has become a tradition on this popular "name train," and today's luxury streamliner continues to offer exclusive extras to travelers in the Pacific Northwest, such as its friendly stewardess-nurse service and the thrifty Slumbercoaches.

### Gonzaga University at Spokane Has Bing Crosby Trophy Exhibit

Bing Crosby fans contemplating a trip to Spokane will want to visit the Crosby Library which is located in the center of the Gonzaga University campus, 10 minutes from downtown Spokane.

The "Old Groaner", who is a regent of Gonzaga, which he attended, provided the funds for construction of the library. Visitors are invited to see the gold records, "Oscar" motion picture award and other trophies of the famed crooner which are displayed in the Crosbyana Room in the library.

### NP's Ken Trowbridge Heads Kansas City Skat Club in '60

Ken Trowbridge, General Agent of the Northern Pacific railway at Kansas City, is the new president of the Kansas City chapter of the Skat Club of North America, Inc.

Also elected to office were Glenn Evers, United Air Lines, vice president; Charlie McAllister, American Express Co., secretary, and Jimmy Warren, Santa Fe railway, treasurer.

Trowbridge succeeds Howard E. Davidson, Braniff Airways.



## The North Coaster

Published by the Passenger Traffic Department  
NORTHERN PACIFIC RAILWAY, ST. PAUL, MINN.

G. W. RODINE - - Passenger Traffic Manager  
L. HOLMSTROM - - General Passenger Agent  
F. G. SCOTT - - Western Pass. Traffic Mgr.  
WILLIAM A. McKENZIE - - Editor

MADE IN U. S. A. 6250

## NP Names Stevenson to N. Y. Traffic Post

E. M. Stevenson, General Freight Agent of the Northern Pacific railway at Seattle, has been named Eastern Freight Traffic Manager with headquarters in New York City.

He succeeds G. C. Reinhardt who retired March 1 after 40 years of NP service.

Stevenson's promotion heads a list of several recent appointments in NP's traffic department. These include:

O. W. Cobb, Assistant General Freight Agent at Seattle, has been appointed General Freight Agent-Rates at St. Paul, a newly-created position. A. P. Kimmel, Assistant General Freight Agent at Minneapolis, has succeeded Stevenson as General Freight Agent at Seattle.

J. D. Nankivell, Assistant General Freight and Passenger Agent at Tacoma, Wash., succeeded Kimmel and C. E. Moehring, General Agent at Everett, Wash., succeeded Nankivell. Succeeding Moehring is C. H. Wilson, Assistant to the General Freight Traffic Manager at St. Paul.

J. R. Patterson, General Agent, Freight Department, at New York City, has been named General Freight and Passenger Agent in New York.

R. S. Sandgren, Commerce Agent at St. Paul, has been promoted to Assistant General Freight Agent at Seattle. R. J. Madden, who has been named Commercial Agent at Minneapolis, has been succeeded in his previous post of Traveling Freight and Passenger Agent at Minneapolis by A. O. Beelmann, who was formerly City Freight Agent in the Minneapolis traffic office.

## C. L. Townsend Dies at 84

Charles L. Townsend, retired general passenger agent of the Northern Pacific, died in Seattle April 12 at the age of 84. Mr. Townsend retired as GPA at Seattle in 1941 after 48 years of service with the NP. He was AGPA at St. Paul before going to Seattle in 1931.

## Fifties Take Toll of Steam Engines

Only 711 steam locomotives were owned by the Class I railroads of the United States as of January 1, 1960, compared with steam locomotive ownership of 28,964 ten years ago.



IN THE MERRY MONTH of May, Spokane will salute the glories of the spring season with its famous Lilac Festival. Blossoms, parades and pretty girls are among the many colorful attractions which never fail to lure thousands of visitors to this gay affair. This year there will be a 4-day flower show, three giant parades and selection of a queen from a group of beautiful candidates. Pictured marching smartly down First avenue are some of the parade units which participated in last year's Festival. The Northern Pacific railway passenger station can be seen in the background.

## Spokane's Twenty-first Annual Lilac Festival to be Held May 14-21 as Gala Tribute to Spring

To serious gardeners, syringa vulgaris is a lavender-hued plant that graces spring gardens with hardy beauty and lush fragrances.

But to citizens of Spokane, the syringa, or lilac, is the symbol of the city's week-long salute to spring—the 21st Lilac Festival which will be held May 14 through 21.

An entertaining program for thousands of home-towners and visitors has been planned. The eight-day celebration will open with the traditional Junior Lilac Parade with more than 2,000 colorfully costumed youngsters participating.

Two other giant parades will highlight the 1960 program. New this year is a Torchlight Parade on Thursday evening, May 19, which will feature more than 30 beautifully lighted floats.

The giant Lilac Festival-Armed Forces Parade on Saturday morning, May 21, will focus attention on more than 150 units from the states of Washington, Idaho, Oregon, Montana and the Canadian province of British Columbia. Lt. General Robert Milchrist Cannon, Commanding General of the Sixth United States Army with headquarters in San Francisco, will be Grand Parade Marshal.

Appealing to most visitors will be the 4-day Lilac and Spring Flower Show sponsored by the Associated Garden Clubs of Spokane. It is much more than a flower show. Living gardens, brilliant rich patios, and rare blooms are all superbly displayed indoors. A special feature of the show will be the Japanese section of landscape design.

No celebration of this type is complete without a movie or television personality. And the Lilac Festival is no exception. Dwayne Hickman—better known as television's Dobie Gillis—will be on hand for the affair.



**BOWLING ENTHUSIASTS** from Portland posed for this picture at trainside before boarding the Vista-Dome North Coast Limited recently for the American Bowling Congress tournament at Toledo, Ohio. They are, from left, William W. McCulloch, ABC executive director from Portland; Rod Rogers, President of the Portland Bowling association; Jack Luhn, Portland Retail Trade Bureau; Howard Travor, Assistant to the Mayor of Portland. The men were members of a delegation seeking to make Portland the site of the 1964 ABC tournament.



## Portland Will Salute World Famous Cities at Festival of Roses

A visit to this year's Portland Rose Festival will be a little like taking a trip abroad because you're likely to view the Eiffel Tower, the Rome Colosseum or the Brandenburg Gate.

The reason is that the Rose Festival, June 7 through 12, will salute "Famous Cities of the World" in its Grand Floral Parade Saturday, June 11. Altogether, 50 floats representing as many different cities will roll through downtown Portland streets at parade time.

The Festival program will follow an expanded schedule put into effect for the 50th anniversary two years ago. The zany Merrykhana Parade will open the week's activities on Tuesday night, June 7, with humorous floats, noisy band, clowns, and the ubiquitous Portland Rainmakers hamming it up. On Wednesday night, the Rose Festival Queen will be selected in coronation ceremonies at Multnomah stadium with a panel of judges picking the ruler from among eleven high school princesses.

On Thursday and Friday, the 72nd annual Rose Show will bring a sea of blossoms into the Sheraton Hotel ball room. Friday afternoon comes the unique Junior Rose Festival Parade with some 10,000 youngsters staging their own pageant, and on the following morning the Grand Floral Parade will wind through Portland streets before half a million or more spectators.

The windup comes Sunday, June 12, with traditional Marine Day events on the Willamette river and the Golden Rose Ski Tournament at Mt. Hood.

As in past years, a fleet of United States and foreign warships will be in Portland harbor during the Festival. Uniformed seamen contribute color to many Festival events and the ships will be open to visitors for a part of every day they are in port.

Portland itself offers many new scenes and attractions to Festival visitors who have not passed through the city in recent years. The Lloyd Shopping Center, said to be the world's largest with parking for 8,000 cars, will be virtually complete and only a few weeks from official opening. The new Memorial Coliseum will be well along toward completion and the big new zoo in West Hills will be opening for its second summer. New freeway construction will amaze those who have not been in Portland since the Banfield expressway opened in December 1957.

### NP Serves Girl Scout Cookies

Girl Scout cookies have made their appearance again this spring on Northern Pacific dining cars. These tasty treats have been served on NP diners every year since the Girl Scouts began their annual nation-wide sale of the tempting delicacies.

### House Bill Sets Transportation Week

The House has passed and sent to the Senate a bill authorizing the President to proclaim May 15-21 as National Transportation Week.



QUEEN MARY SUE WOOLFOLK of the 1959 Portland Rose Festival reigns over this year's event until a new queen is chosen from a bevy of candidates on June 8.

### St. Louis CPA Association Elects Hartman President

Charles Hartman, CPA of the Missouri Pacific, was elected president of the City Passenger Agents Association of St. Louis recently.

Other new officers are Les Gauen, CPA of the Wabash, vice president; Emmett Reholz, Passenger Representative of the Frisco, secretary; Rudy Franich, Passenger Representative of the B&O, treasurer.

The St. Louis association is made up of railroad men who have at some time held the title of CPA or TPA. The club has a membership of 100.



NEWCOMER TO "Main Street of the Northwest" is Marilyn Parsons of Dubuque, Iowa, who recently became a stewardess-nurse on the Vista-Dome North Coast Limited. Miss Parsons is a graduate of St. Anthony's School of Nursing at Rock Island, Ill. She has been a nurse at St. Anthony's hospital in Rock Island and Mercy hospital in Dubuque.

## Park Service Seeks Bid for Glacier Bay Facilities

The National Park Service has invited qualified individuals or corporations to submit offers to construct and operate a lodge and provide other visitor facilities in Glacier Bay National Monument, Alaska.

The facilities, according to Park Service Director Conrad L. Wirth, would require a minimum investment of about \$150,000 and are the first of their type proposed for the National Monument, a two-million-acre wilderness on Alaska's southeastern coast renowned for its tide-water glaciers, vast ice fields, interglacial forests and magnificent snow-clad peaks.

Provision of the new facilities is part of the Mission 66 program for Glacier Bay Monument. Approximately \$600,000 has already been spent on utility, dock, pier, road and employee housing projects in the park headquarters areas since the program started in 1956.

## Joseph Joffe Retires After Lengthy Service With Yellowstone Park

Joseph Joffe, veteran Yellowstone National Park staffer, retired March 4 after 43 years in government service, 37 of them in Yellowstone.

Joe is credited by Park Superintendent Lemuel Garrison with having done an exceptional job of public relations and publicity, in addition to performing tasks incident to operations of concessions in the park.

This picture shows Joe after having just indulged in one of his favorite recreations. Joe and his wife, Aleda, whom he met in the park in 1922 when she was recreation director at Mammoth Lodge, have retired to Livingston, Mont., where their address appropriately, is 119½ South Yellowstone.



## NATO Issues Russian Edition of 'Visit USA' Travel Folder

The National Association of Travel Organizations has announced it is printing a Russian language edition of its "Invitation to Visit the U. S. A." folder which is being distributed to prospective tourists abroad.

About 1½ million of the folders—in English, French, German, Spanish, Portuguese, Italian and Japanese—have been distributed. A new edition of the folder contains a U. S. map designating principal cities and areas of tourist interest, and basic information on travel, costs and entrance formalities. Its 18 color photos range from New York's skyline to the Cascade mountains of the Pacific Northwest.

The President has proclaimed 1960 as "Visit U. S. A. Year" and has ordered a cutting of red tape in entrance procedures and the extension of "an especially warm welcome to visitors from abroad."



"CAN SHE BAKE a cherry pie, . . .?" She can, and she did. Janet Schlegel, cherry pie baking champion of Oregon, presented one of her masterpieces to Mayor Terry Schrunk of Portland prior to her departure for Chicago on the Vista-Dome North Coast Limited to compete with high school girls from the other 49 states in the national cherry pie baking contest.

**NCL ANNIVERSARY**  
(Continued from Page 1)

cellence displayed on its first trip. A virtual parade of travel refinements, new equipment and faster schedules has kept North Coast Limited a name well known to travelers from both this country and abroad.

At the end of World War II, new lightweight, streamlined equipment was put in service on the train. A few years later, a full day was shaved from the Chicago-North Pacific Coast running time.

Vista-Dome coaches and sleepers were added in 1954 when Raymond Loewy Associates, the famed industrial designers, developed new interior and exterior color schemes. At this time, the Loewy people also planned decorative motifs of the dome cars, diners, coaches, observation lounge cars and the unique Lewis and Clark Traveller's Rest buffet-lounge cars.

The following year, 1955, saw a group of comely, young registered nurses join the train service personnel as stewardesses to give the Vista-Dome North Coast Limited another exclusive service feature in the Northwest.

A line of sparkling new dining cars was placed in service early in 1958 and the latest addition is a line of Slumber-coaches, added in December, 1959.

**U. S. Park Service Looks for 67 Million Visitors in 1960**

The National Park Service is anticipating nearly 67 million visitors to its various units during 1960.

This represents approximately a 6 per cent increase over the all-time record of 62,812,000 visits recorded in 1959. The previous record was 59,285,000 established in 1957.

An unprecedented number of inquiries from abroad indicates that thousands of foreign tourists will help increase travel to the 29 U.S. National Parks and 154 other areas administered by the National Park Service. One event of international interest to music lovers is the premiere public performance of Ferde Grofe's "Yellowstone Suite" June 18 and 19 in Yellowstone Park.

**A CALENDAR OF COMING EVENTS in the Northern Pacific Country**

**WASHINGTON**

- May & June — Rhododendron Tours, Bremerton
- May 18-22 — Spokane Lilac Festival
- June 19-26 — Diamond Jubilee, Yakima
- June 24-26 — Lilac City Open Golf Tournament, Spokane
- July 20-24 — Water Follies, Pasco
- July 27-31 — Aquatic Festival, Bremerton
- July 28-31 — Diamond Spurs Rodeo, Spokane
- July 29-Aug. 7 — Seattle Sea Fair
- Sept. 3-4 — Ellensburg Rodeo
- Sept. 11 — Horse Show, Bremerton

**OREGON**

- May 6-8 — Pea Festival, Milton-Freewater
- June 7-12 — Portland Rose Festival
- June 12 — Golden Rose Ski Tournament, Mt. Hood
- June 18 — National Rooster Crowing Contest, Rogue River
- July 2-4 — Water Pageant, Bend
- July 2-4 — Molalla Buckaroo
- July 2-4 — World Champion Timber Carnival, Albany
- July 25-Sept. 3 — Oregon Shakespearean Festival, Ashland
- July 29-31 — Miss Oregon Pageant, Seaside
- July 29-31 — Chief Joseph Days (rodeo and pageant), Joseph
- Aug. 5-7 — Emerald Empire Roundup, Eugene
- Aug. 12-14 — Crooked River Roundup, Prineville

- Aug. 26-28 — Regatta & Fish Festival, Astoria
- Sept. 2-10 — Oregon State Fair, Salem
- Sept. 14-17 — Pendleton Round-Up
- Oct. 8-15 — Pacific International Livestock Exposition, Portland.

**MONTANA**

- May 17 — Grand Opening Ceremonies—Hellgate Centennial, Missoula
- June 13-19 — Western Days: Parade, Horse Show, Billings
- June 23-24 — Vigilante Rodeo, Butte
- July 2-4 — Roundup, Livingston
- July 3-4 — "Home of Champions" Rodeo, Red Lodge
- Aug. 1-6 — Centennial Grand Spectacular, Missoula
- Aug. 13-21 — Annual Festival of Nations, Red Lodge
- Aug. 16-18 — Rosebud County Fair, Forsyth
- Aug. 18 — Montana Open Golf Tournament, Billings
- Aug. 27-28 — Air Show, Billings

**NORTH DAKOTA**

- June 29-Sept. 4 — Custer Drama, "Trail West," Mandan
- June 29-Sept. 5 — Teddy Roosevelt Drama, "Old Four Eyes," Medora
- July 9-15 — Red River Valley Fair, Fargo

**MINNESOTA**

- July 15-24 — Minneapolis Aquatennial
- Aug. 11-14 — National Water Ski Championships, Minneapolis
- Aug. 27-Sept. 5 — Minnesota State Fair, St. Paul

**Pittsburgh Group Elects Surls President for 1960**

The Pittsburgh Passenger Club recently elected G. R. Surls of Crucible Steel company's traffic department as its president for the coming year.

Rounding out the slate of officers are R. A. Finlay, Capital Airlines, first vice president; J. I. Miller, Seaboard railroad, second vice president, and M. F. Snyder, Pullman company, secretary-treasurer.

Named to the executive committee were J. L. Anderson, Santa Fe railroad; W. C. Smith, Pittsburgh Sun-Telegraph; F. J. Spitzkopf, Rust Engineering company; N. R. Hershorin, Pittsburgh Post Gazette; A. H. Martine, B&O railroad; J. F. Mahoney, D&RGW railroad, and G. E. Manning, American Express company.



**Yellowstone Man Gets New Post**

Frank E. Sylvester, assistant chief park ranger at Yellowstone National Park, has been named superintendent of Badlands National Monument in South Dakota to succeed the late George H. Shelly. Sylvester has been with the Park Service since 1942.

**Passenger Train Investment in Millions**

A typical, deluxe passenger train of 12 to 14 cars and a two-unit diesel locomotive costs about \$4 million.

**SOMETHING DIFFERENT** in office parties was staged this year by the communications and training division staff of Anaconda company's personnel department. This year, the group held its annual get-together aboard the Vista-Dome North Coast Limited as it crossed the continental divide in Montana between Butte and Livingston. Pictured in the Lewis and Clark Traveller's Rest buffet-lounge on the trip are, from left, Mrs. Robert Vine, Clifford Williams, Robert Vine, George Wellcome (standing) and Mrs. Clifford Williams.