



The North Coaster



Vol. XXIII Number 2

NORTHERN PACIFIC RAILWAY—Main Street of the Northwest

March-April, 1952

Grand Coulee Dam Stamp Sale Begins Basin Celebration

3-Cent Commemorative Stamp to Go on Sale May 15th at Grand Coulee, Wn.

May 15, 1952 the Grand Coulee Dam commemorative 3-cent postage stamp will go on sale at Grand Coulee, Wash. Postmaster General Jesse M. Donaldson announced that the issuance of the stamp will be preliminary to a celebration which the people of the Columbia Basin are planning from May 22 to June 1, in observance of the first integrated portion of the million acre Columbia Basin reclamation project.

Grand Coulee Dam is the key structure in the great Columbia Basin Reclamation Project in central Washington State. It is the largest concrete dam in the world and also boasts the largest hydroelectric plant and water pumps.

The stamp is being issued in commemoration of fifty years of Federal cooperation with the West in developing the resources of the rivers and streams which head up among the mountain ranges between the Missouri River and the Pacific Ocean.

The central design of the stamp is a scene of Grand Coulee Dam, showing the spillway. An irrigation farmer at work is shown on the left side of the stamp, and on the right side appears a power transmission line and towers, typifying the two principal benefits of this project.

Stamp collectors desiring first-day cancellations of this stamp may send a limited number of addressed envelopes, not in excess of ten, to the Postmaster, Spokane, Wash., where the preliminary work will be done, after which the covers will be forwarded to Grand Coulee, Wash., for cancellation.

All money order remittances should be made payable to the Postmaster, Spokane, Wash. An enclosure of medium weight should be placed in each envelope and the flap either sealed or turned in. The outside envelope to the Postmaster should be endorsed "First Day Covers."

New N. P. Ranch Book is Out; Copy is Yours for the Asking

Northern Pacific has just published an attractive new illustrated folder on Rocky Mountain Dude Ranches. It is profusely illustrated and lists some 70 recommended ranches in Montana, Wyoming, Washington and British Columbia.

Copies may be obtained by addressing G. W. Rodine, Passenger Traffic Manager, Northern Pacific Railway, St. Paul, Minn.

Grand Coulee Dam Stamp Commemorates World's Largest Dam



Lewis and Clark Budget for Two-Year Expedition From Mississippi River to Pacific was Only \$2,500

Largest Item in Appropriation was Allotted for Presents for Indians

This is the story of the little appropriation Congress authorized to explore the biggest real estate deal in world's history.

President Thomas Jefferson was talking to his secretary, Meriwether Lewis. The year was 1803.

"Congress has passed a bill authorizing the expenditure of \$2,500 for the exploration of the five hundred million acres of land from the Mississippi to the Rocky Mountains which we have just purchased from Napoleon Bonaparte and France. Take charge of the party and explore this wild and uncharted country."

This was the largest real estate transaction in the world's history, making the United States for the first time, a powerful force in world affairs, and changing the course of events to the present day.

But for this important job Congress authorized only \$2,500 to pay the expenses of 45 men who would travel from the Mississippi to the Pacific Ocean through immense tracts of land, moun-

(Continued on Page 4)

Twin City Skal Club Selects H. M. Larson 1952 President

H. M. Larson, AGPA, CMST&P, was elected president of the Twin City Chapter of Skal Clubs at the annual election dinner at the St. Paul Hotel on March 31.

Other officers elected are: B. A. Anderson, GA, CP RR., vice president; W. H. Schilling, Jr., Manager, Schilling Travel Service, secretary; W. H. Fobes, Jr., Regional Sales Manager, Mid-Continent Airlines, treasurer; and H. J. Koukal, GA, Rock Island RR., assistant secretary.

Chas. Sorg Retires; Adamcik is Dallas GA

Veteran Completes 51 Years of Railroad Service—Cassell Named TF&PA

Charles Sorg, Jr., general agent of the Northern Pacific Railway in Dallas retired March 1 after 51 years of railroad work. His successor is George J. Adamcik of Dallas, who has been with the Northern Pacific since 1926.

E. A. Cassell, commercial agent, succeeds Adamcik as traveling freight and passenger agent and B. E. Guynes, stenographer-clerk in the office, succeeds Cassell with the title of city freight and passenger agent. S. C. Jones, Jr., has been appointed chief clerk in the Dallas office.

Sorg began his railroad career in 1900 at the age of 18, his first job being in the General Passenger Agent's office of the MK&T, then through various departments, ending in the general freight office. He also worked for the Santa Fe, SLSW, Texas & Pacific, and the St. Louis, Brownsville & Mexico Ry. (now Missouri Pacific) as Traveling Auditor and relief agent. He then went to work for the Burlington in Dallas in 1910, and came to the Northern Pacific in 1921. He was appointed general agent in 1940. He is past president of the Passenger, Ticket and Freight Agents Association of Texas.

Mr. Adamcik worked for the M. K. & T., the Interstate Commerce Commission and the Fort Worth & Denver City before joining Northern Pacific in Dallas in 1926. Cassell has been in the company's Dallas office since 1937.



The North Coaster

Published by the Passenger Traffic Department
NORTHERN PACIFIC RAILWAY, ST. PAUL, MINN.

G. W. RODINE - - Passenger Traffic Manager
M. M. GOODSILL - - General Passenger Agent
F. G. SCOTT - - Western Pass. Traffic Mgr.
L. L. FERRIN - - Advertising Manager-Editor

MADE IN U. S. A. 6250

Chicago Skat Club Elects B. M. Fox 1952 President

The Chicago Skat Club at the annual election dinner March 10th selected the following officers: President, B. M. Fox, DSM, American Airlines; Vice President, Geo. W. Cleland, GA, Canadian Pacific RR., Secretary, T. B. Graves, NPA, Texas & Pacific Ry., Treasurer, H. F. Compton, GAPD, Northern Pacific Ry.

The initial Skat Club was established in Paris, July 1, 1932, and others were formed shortly thereafter. They were united in a central organization, the Association Internationale Des Skat Clubs in 1934. In 1938 the New York Chapter of the Skat Clubs of North America was founded.

Chester Voss New President of St. Louis Passenger Club

The St. Louis Passenger Club elected Chester Voss, NYC, president for 1952; and the following officers: George Batty, SP, 1st VP; Rudy Rector, Greyhd, 2nd VP; Ralph Fischer, GM&O, 3rd VP; Walter Hesse, PRR, treasurer; Mel Johnson, MP, secretary.

The newly-elected co-editors of the Headlight, an interesting six-page bimonthly, are: B. Herchenroeder, PRR, J. F. Gaffney, NYC, and John Austin, Northern Pacific. The present membership of this active club is 302.

Don't Feed Animals is Advice in Yellowstone

Regulation Provides Protection Against Wild Animals for Millions of Visitors

Protection for the millions of visitors to Yellowstone and other national parks which contain large wild animals is the reason for a new regulation just approved by Secretary of the Interior Oscar L. Chapman. The regulation prohibits the "feeding, touching, teasing or molesting of any bear, deer, moose, buffalo (bison), bighorn (mountain sheep), elk, or antelope."

In recommending departmental approval, the National Park Service called attention to the fact that some visitors have the erroneous belief that animals found in the national parks are tame and can be handled as pets, and it emphasized the possibility of attack, without apparent provocation, upon any nearby person, often with harmful results.

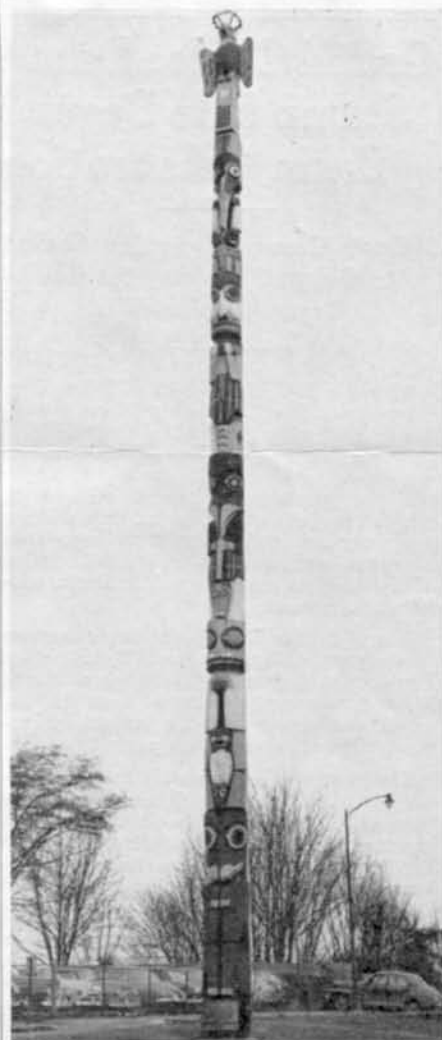
Previously, the limitations now applied to other large wild animal species have been applied only to bears, which continue to present the principal problem of public safety as far as the wild animals of the parks are concerned.

Buffalo Passenger Association Elects Russell 1952 President

The Buffalo Passenger Association has elected the following officers for 1952: G. L. Russell, president, Capital Airlines; R. G. Williamson, 1st vice-pres., CP Ry., H. G. Hedin, 2nd vice-president, Nickel Plate Road; and R. H. Newcombe, secy-treas., CN Ry.

Members of the Executive committee are: C. V. Howick, CN Ry., A. H. Cruickshank, Santa Fe Ry., E. F. Day, Day's Tour & Travel Bureau, E. C. Haberer, Santa Fe Ry., R. B. Heidenburg, SP Lines, P. J. Ryan, NYC System, and C. A. O'Brian, Lackawanna RR.

World's Tallest Totem Pole



The largest totem pole in the world stands towering, grotesque and unusual, in Tacoma at the east end of So. 10th St., just as it was carved in 1903 by a family of Alaskan Indians.

The Tacoma totem pole is a genuine Indian production, carved by the master craftsmen of a tribe famous for its talent. The story is the history of the Eagle tribe of Alaska. There is an eagle at the top. The history reads from the ground up, and is simply a record of the tribe.

The totem pole was carved in Tacoma by the members of the Alaskan Indian tribe who made the trip "outside" at the invitation of W. F. Sheard, explorer, hunter and traveler, and Chester Thorne, president of a Tacoma bank.

Kansas City Passenger Agents' Ass'n Elect Officers for 1952

At the annual dinner of the Kansas City Passenger Agents' Association the following were elected for 1952: John J. Foxen, City Agent, C&NW, president; Neil E. Black, City Ticket Agent, Rock Island Lines, vice president; and O. W. "Gus" Cobb, CF&PA, Northern Pacific, secretary-treasurer.

1952 Calendar of Events

Portland	Rose Festival	June 11-15
Minneapolis	Aquatennial	July 18-27
Seattle	Seafair Water Carnival	Aug. 1-10
Livingston, Mont.	Annual Trout Derby	August 10

Western Rodeos on Northern Pacific

June 7-8	Polson Rodeo	Polson, Mont.
June 14-15	Rodeo	Darby, Mont.
June 21-22	Powell County Rodeo	Deer Lodge, Mont.
June 25-28	Roundup	Miles City, Mont.
July 4-5-6	Rodeo	Livingston, Mont.
July 4-5	Rodeo	Glendive, Mont.
July 4-5	Horse Show	Forsyth, Mont.
July 4	Rodeo	Drummond, Mont.
July 3-7	Flathead Indian Rodeo	Arlee, Mont.
July 10-12	Rodeo & Wild West Show	Butte, Mont.
July 11-13	Stampede	Missoula, Mont.
July 4-6	Rodeo	Red Lodge, Mont.
August 2-3	Gene Autry Rodeo	Big Timber, Mont.
August 18-24	Rodeo	Dillon, Mont.
July 3rd week	Rodeo	Brockway, Mont.
July 27	Rodeo	Three Forks, Mont.
Sept. 5-7	Lewiston Roundup	Lewiston, Idaho
Aug. 30-Sept. 1	Rodeo & Fair	Ellensburg, Wash.
Sept. 11-12-13	Roundup	Pendleton, Ore.

Spectacular Scenery in Montana and Mount Hood Area Filmed by Studios

Portland and Missoula See World Premieres of "Bend of River" and "Red Skies of Montana"

Two motion pictures released recently by major studios were filmed in Northern Pacific country.

"Bend of the River," Universal International's technicolor production starring James Stewart, had its world premiere in Portland, and "Red Skies of Montana," 20th Century Fox's dramatic picture of the "smoke jumpers," parachute shock corps of the U. S. Forest Service, filmed in the Montana Rockies, was premiered at Missoula.

Spectacular technicolor views of Mt. Hood dominate many of the scenes in "Bend of the River." The rugged and picturesque Oregon country plays a real life movie role with its spectacular backgrounds to the story of a pioneer trek along the Barlow Trail to Portland, the Portland boom town of gold rush days and the eventual slashing of a covered wagon trail across the icy slopes of Mt. Hood.

To capture the scenes in the snowfields of Mt. Hood, Director Anthony Mann moved his company of 150 from their headquarters at beautiful Timberline Lodge to the 8000-foot level of the mountain in one of the most rugged behind-the-scenes maneuvers imaginable.

Final location filming was conducted along the famous Columbia River gorge aboard an ancient sternwheeler river boat, the Steamer Henderson, rented to Universal-International by the Shaver Transportation Co., which still uses the ancient craft to tow heavy steamers along the river route. The Henderson, built in 1912, was "aged" 42 years to fit the 1847 period and re-named the River Queen to fit her role in the story.

Basalt cliffs along the Oregon shore of the Columbia form a backdrop for the riverboat scenes from "Bend of the River," commemorating the Covered Wagon Centennial, 1852-1952, celebrating the climax of the covered wagon migrations to Oregon in 1852.

"Red Skies of Montana" has Richard Widmark in the starring role. The picture was inspired by the tragic fire in Mann Gulch in 1949 when 13 men lost their lives. A great deal of the picture was shot at Nine Mile camp, 18 miles northwest of Missoula.

It is a "spectacle" motion picture in the classical Hollywood tradition. The picture chronicles exploits of intrepid firefighters who bail out of ancient Ford trimotor planes to pinpoint raging timber blazes in isolated and often uncharted wilderness.

Missoula "went Hollywood" in a big way, as more than 500 residents of the picturesque community were hired as extras. A second photographic unit spent two months in the Montana mountains filming background footage for the picture making "Red Skies of Montana" both a scenic and incredible saga of the

Northern Pacific Country Attracts Major Film Studios



Top and middle: Scenes from "Bend of the River"
Bottom: Scene from "Red Skies of Montana"

"Smoke Jumpers," far-sweeping in dramatic scope.

City Passenger Agents Club of St. Louis Elect Officers

The City Passenger Agents Club of St. Louis elected the following officers for 1952: Pete Howard, PRR, president; Ed Nealis, American Bus Lines, vice president; Rudy Rector, Greyhound Bus Lines, treasurer; and Maurice Mulronney, CP, secretary.

Columbus Passenger Club Elects George Hauck President for '52

George Hauck, PRR, was elected president of the Columbus Passenger Club at the annual election meeting. The following were chosen to serve with him as officers in 1952: Walter Know, C&O, vice president; and Ruth Craig, Columbus Union Depot, secy.-treasurer.

The Board of Governors are: Harry Kurtz, NYC, Malcum Waters, Columbus Union Depot, Marjorie Dackin, PRR, and M. J. Casey, B&O.

Cotsworth Retires; Alms is Named GPTM

Burlington Passenger Chief in Service 52 Years—Gartside Appointed PTM

Albert Cotsworth, Jr., Passenger Traffic Manager of the Burlington Lines since 1927, retired March 31 after more than 52 years of service with the company. His successor is Julius J. Alms, General Passenger Agent at Omaha, who was given the title of General Passenger Traffic Manager.



Mr. Cotsworth

Burt L. Gartside, General Passenger Agent, Chicago, was promoted to Passenger Traffic Manager; Wilbur F. Burke, AGPA, Chicago, suc-

ceeded Mr. Alms at Omaha, and Cecil G. Kersey, office manager in the Chicago Passenger department, succeeded Mr. Burke.

Mr. Cotsworth and A. T. Erickson, who retired March 31 as general passenger agent of the Soo Line, Minneapolis, were honor guests at a luncheon in Chicago April 1. Russell F. Berndt succeeded Mr. Erickson and Paul H. Sullivan succeeded Mr. Berndt as AGPA.



Mr. Alms

Berndt succeeded Mr. Erickson and Paul H. Sullivan succeeded Mr. Berndt as AGPA.

Portland Convention Travel Increases as Help is Given Visitors to City of Roses

Portland convention travel is increasing rapidly because Portland hotels are expanding their capacity to take care of the demand, and the Portland Chamber of Commerce has organized a new convention bureau to provide information and assistance to visitors meeting in the world famous rose city.

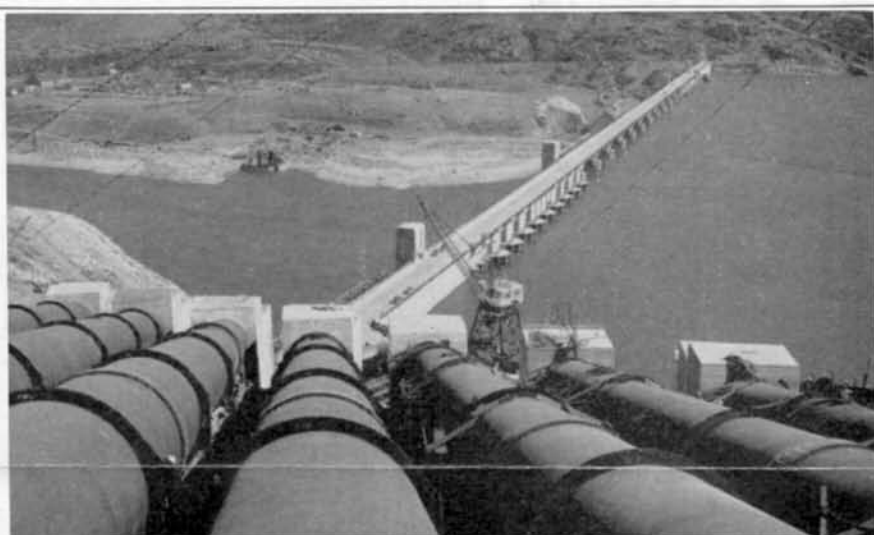
The new bureau is especially equipped to handle convention management with emphasis on transportation, registration, housing, program planning and entertainment. V. A. McNeil is manager of the bureau.

Park Chief Who Once Drove Stage in Yellowstone Retires

Charles J. Smith, who came west from New England in 1908 to drive a stage coach in Yellowstone National Park, will retire April 30 as superintendent of Zion and Bryce National Parks.

When civilian ranger service was established in 1916, Mr. Smith was appointed a park ranger in Yellowstone and rose to assistant chief park ranger there. He was superintendent at Grand Teton National Park before going to Zion and Bryce in 1943.

GIANT Pipes Carry 16,000 Cubic Feet of Water Per SECOND



These giant pipes carry 16,000 cubic feet of water per second at Grand Coulee Dam in the Columbia Basin Reclamation project in Washington state.

Philadelphia Passenger Ass'n Selects Roberts '52 President

The Philadelphia Passenger Association elected the following officers for 1952 at the annual meeting recently: R. L. Roberts, MP, president; J. A. Barrett, Washash, and C. W. Meinsen, CB&Q, vice presidents; T. F. Stefanski, PRR, secretary; T. J. Manning, B&O, treasurer; and J. C. Dolan, Northern Pacific, who was re-elected historian.

Directors named were R. E. Dunn, M. H. Eckardt, E. F. Wiker, and F. B. Fowler, PRR; A. E. Rohmer, GN, E. B. Saltmer and W. P. Cox, B&O; J. L. Anderson, Santa Fe, J. J. Collins, CBQ, W. W. Greene, C&NW, T. E. Greenwood, American Express and W. M. McCullough, Southern Railway.

Minneapolis Passenger Club Selects Officers for 1952



Here are the 1952 officers of the Minneapolis Passenger Traffic Club: Left to right, back row, W. A. "Bill" Kelch, GAPD, C&EL, president; Ray Gilbertson, ticket clerk, CMSIP&P, secretary; front row, S. A. "Alec" Swanson, AGPA, M&StL, treasurer; and E. M. "Ed" Petschl, AGPA, C&NW, vice president.

Ray Conaway was elected secretary by just one vote, but after the election he was promoted to TPA, Seattle, and the job automatically went to Ray Gilbertson.

Two Yellowstone Officials Are Promoted by Park Service

Curtis K. Skinner, chief park ranger in Yellowstone National Park, has been appointed assistant superintendent of Rainier National Park, Washington.

Another Yellowstone official, Fred T. Johnston, assistant superintendent, has been promoted to superintendent of Lassen Volcanic National Park.

LEWIS AND CLARK

(Continued from Page 1)

tains, and rivers, through which it was so difficult to travel that it would take two years to explore.

And Congress demanded much in return for its appropriation. With this money Captains Lewis and Clark were to travel from the Mississippi to the Pacific, obtain every kind of information regarding the country, establish trade relations with various tribes of Indians, examine the flora and fauna of the land, geographical features, soil and mineral resources and many other topics.

The largest portion of the \$2,500 was allotted for Indian presents, \$696; next was transportation, \$430; and pay of hunters, guides and interpreters, \$300.

Only \$224 was planned to be spent for food for the two-year trip for 45 men. Today the amount of food required for a similar journey would come to \$131,400. The men lived off the fat of the land, and steaks and chops were available around every corner.

Attesting to the peaceful intent of the party \$217 was spent for mathematical instruments; and only \$81 for arms.

Camp equipment cost \$225, and medicine \$55; and the same amount, \$55, was used for materials for making up the various articles into portable packs.

\$100 in silver coin was used to defray the expenses of the party from Nashville to the last white settlement on the Missouri; and finally \$87 was saved for "contingencies."