



NEW SIGHTSEEING TOUR FOR N. P. YELLOWSTONE TRAVELERS



NEW SIGHTSEEING TOUR—These majestic mountains greet the traveler entering Yellowstone National Park via the Livingston-Gardiner Gateway. The spectacular tour in new sightseeing buses is included in the Northern Pacific rail ticket to Yellowstone at no additional cost.

Rainier Park Opens June 25; Daily Bus to Paradise Inn From Seattle and Tacoma

The 1949 summer season at Rainier National Park, Washington, extends from June 25 to Sept. 10, according to G. W. Rodine, passenger traffic manager of the Northern Pacific, whose transcontinental North Coast Limited serves Tacoma and Seattle, gateways to the park.

During the season, buses operate daily between Seattle, Tacoma and Paradise valley, site of rustic Paradise Inn. An ideal two-day side trip from the cities is for the traveler to leave on a morning bus, arrive at Paradise for lunch, remain overnight at Paradise Inn and return the following afternoon.

Snow-capped Mount Rainier, which towers above the valley to a height of 14,408 feet, is the chief park attraction. Hiking, mountain climbing, saddle horse riding and fishing are available for visitors.

New Vista-Dome Zephyr Begins Chicago-San Francisco Operation

The California Zephyr, new Vista-Dome streamliner, late in March inaugurated daily service between Chicago, Denver, Salt Lake City and San Francisco. The train carries modern chair coaches and sleeping cars with drawing rooms, bedrooms, roomettes and sections.

The train is operated by the Burlington, Rio Grande and Western Pacific.

The longest single rail-Pullman trip of a President was made by William Howard Taft in 1911, when he traveled 12,961 miles in six weeks.

N.P. Bowler Wins National Rail Championship With 755 Pins

Fred R. Frayer, Jr., chief clerk in Northern Pacific's Cleveland traffic office bowled a sensational 755 to win the singles championship of the National Railway Bowling Association tournament at Cleveland in April. Frayer rolled 276, 256 and 211, which with a 4-pins-a-game handicap gave him his championship total, a new tournament record. He hit 607 in the team event and 610 in the doubles for an all-events total of 1972 for nine games. Frayer's Railway tournament performance was not a flash in the pan. He has a 195 league average this season and owns a 700 series in the Cleveland Passenger Club Bowling league for 1949.

The Minneapolis & St. Louis Railroad team of Minneapolis won the team championship with 3260, including handicap. They had 3041 actual pins, which is fancy bowling for any league.

George W. Moberg Assigned to Passenger Sales Work

George W. Moberg, veteran Northern Pacific passenger man, has returned to the general office Passenger department in St. Paul as Special Passenger Representative. He has been assigned to general sales work and also will travel in territory near St. Paul. Mr. Moberg formerly was Traveling Passenger Agent and chief clerk in the general office Passenger department. He has been chief clerk in the office of Vice President-Traffic since 1942.

H. C. Hasberg, Traveling Passenger Agent, St. Paul, has been transferred to TPA, Chicago, covering northern Illinois and eastern Iowa territory. Robert McElroy, who formerly traveled in that territory, is now City Ticket Agent, Chicago.

Livingston-Gardiner Bus Trip is Through Mountain Paradise

Highway Follows Yellowstone River between Two Spectacular Ranges of the Rockies

Beginning June 20, the Northern Pacific will inaugurate new sightseeing bus service for Yellowstone Park travelers to better reveal to them the majestic and inspiring mountain views between Livingston on the main transcontinental line, and Gardiner, Mont., northern gateway to the park.

Yellowstone Park is wonderful in itself but the high mountain country about it holds some of the world's greatest, most dramatic scenery. The approach to the Park from the North, in sightseeing buses, via Livingston and Gardiner, will unveil this fabulous region for the appreciation of the traveling public.

From Livingston, up the magnificent Yellowstone River Canyon and through Paradise Valley to Gardiner Gateway, Yellowstone Park is an unforgettable scenic experience. You will exclaim "I have never seen such beautiful mountain country!" Here is a "Dream Land" of Mother Nature's loveliest landscapes.

New Northern Pacific sightseeing buses follow the Yellowstone River between two of Montana's great Rocky Mountain Ranges—the Absarokas and Gallatins. The river is deep, fast and clear as glass; you cannot see its bottom where swift water cascades through the granite-walled gorges, but where it spreads out to several hundred yards in width, the rocky gravel floor is plainly visible. Evergreen trees and yellow aspen groves shelter the river banks.

Paradise Valley, irrigated by mountain streams, is green and rich with alfalfa and ripening grain. Half way between Livingston and Gardiner, near Emigrant, west of the road, high volcanic basalt terraces mark the "Buffalo Jump", where Indians drove herds of Bison over the cliff in autumn and then camped for weeks to secure their food and warm clothing supplies for winter. This area has been a treasure ground for collectors of ancient Indian weapons.

Look west near Corwin Hot Springs, seven miles from Gardiner—there's Cinnabar Mountain, marked by a dark red streak of mercurial shale—this is the "Devil's Slide", cut between rocky walls turned up on edge. The fable is that Satan, in his terrified haste to escape from the mischief of volcanic eruptions he started and the fury of the Geysers in Yellowstone, and the Lord's angry lightning flashing about Electric Peak, tripped and sat down on a sharp Cin-

(Continued on Page 2)



The North Coaster

Published by the Passenger Traffic Department
NORTHERN PACIFIC RAILWAY, ST. PAUL, MINN.

G. W. RODINE - - Passenger Traffic Manager
M. M. GOODSILL - - General Passenger Agent
F. G. SCOTT - - Western Pass. Traffic Mgr.
L. L. PERRIN - - Advertising Manager-Editor

MADE IN U. S. A. 6250

T. R. Memorial Park in N. D. Badlands to be Dedicated June 4

Village of Medora will be Scene of Celebration — Rough Riders to Attend

Tiny Medora in western North Dakota on the Northern Pacific main line is going to be bursting at the seams on June 4. Its 210 inhabitants plan to play host to 100,000 persons.

June 4 has been set as the dedication date for the Theodore Roosevelt National Memorial Park, which is located just east of Medora. The park, created by Congress two years ago, is the only memorial park in the United States.

Real Indians, cowboys, hunters, soldiers and VIP (very important persons) are expected in Medora for the day. President Truman has been invited to make the dedicatory address and many of Teddy Roosevelt's Spanish-American war Rough Riders will take up temporary residence in Medora's Rough Riders hotel.

The thousands of persons expected at the celebration will be fed from "mobile" chuck wagons by the North Dakota American Legion. Those tourists who plan to stay in the area for more than one day will find overnight accommodations in surrounding communities.

A pageant, using the Badlands as a natural backdrop, will be presented in the afternoon. Instead of all of the scenes being presented in one spot, however, the pageant will be staged at various sites along the red scoria highway which winds through the park. Such a presentation will permit tourists to take in the beauty of the Badlands and enjoy the pageant at the same time.

One of Hollywood's pioneer "cowboys", Tom Mix, learned how to ride, rope and shoot at the Short ranch in the Badlands and his connection with the area also will be recognized.

The Chateau de Mores, which now is under the jurisdiction of the North Dakota State Historical society, will be open to the public on June 4. While no admission fee will be charged, no guided tours will be conducted.

The chateau was erected by the Marquis de Mores, blue blooded Frenchman who came close to establishing a cattle empire in the Badlands in Theodore Roosevelt's time.

Pacific N. W. Travel Agents Go East on "North Coast"



This group of Seattle and Portland travel agents went east on the North Coast Limited in February to attend a reception and dinner in New York aboard the new 34,000-ton cruise ship Caronia of Cunard White Star, Ltd. Photographed at King Street Station, Seattle, they are:

Front row, left to right: Mrs. Melita, O'Hara, O'Hara's Travel Bureau, Seattle; Mrs. Dora Dwyer, University Travel Bureau, Seattle; Miss Nancy Hodgkinson, American Express Co., Portland; Mrs. Luvera Snow, Where-to-Go Bureau, Seattle; Mrs. Honey Hansen, Universal Travel Bureau, Seattle and Mrs. George Watchin, Seattle.

Back row, left to right: L. A. Buck, City Passenger Agent, Northern Pacific Railway, Seattle; George Watchin, Watchin's Travel Bureau, Seattle; Miss Mar-

garet O'Brien, American Express Co., Seattle; E. E. Anderson, Passenger Department, General Steamship Co., Portland; E. H. Gordon, Cunard White Star Lines, Seattle.

Mrs. Teckla Carlson, Spokane Travel Bureau, joined the party at Spokane.

Wallace Key Club Delegate Travels N. P. to Convention



NEW YELLOWSTONE TOUR

(Continued from Page 1)

nabar rock. His slide, pell mell down the mountain, left a blood-red trail to the Yellowstone river, where he cooled off his blistered satanic seat.

The entire trip between Livingston and Gardiner, 57 miles by paved road, is thrilling and magnificent! The Northern Pacific now provides modern sight-seeing buses so that travelers may enjoy this wonderful addition to their Yellowstone vacation, at no additional cost above their railroad tickets to and from the Park.

In addition to the Gardiner entrance, Northern Pacific serves Red Lodge Highway Gateway and, in conjunction with the Burlington, Cody Gateway. Through Pullmans will operate on the North Coast Limited during the park season between Chicago and Cody, Chicago and Livingston, and Seattle and Livingston. Red Lodge passengers are accommodated in Chicago-Cody cars to and from Billings, Mont., and in N. P. Transport buses between Billings and the park entrance.

William Dire, Wallace, Idaho, Kiwanis Key Club delegate to a national meeting in Washington, D. C., was greeted at Missoula by C. S. Porter, president of the Missoula Kiwanis Club as he boarded the North Coast Limited for the east. William, a Wallace high school junior, was awarded the trip by a vote of the Kiwanis Club, Key Club members and the high school principal. The choice was based on scholarship and leadership. The Key Club, whose members are high school juniors and seniors, is a Kiwanis Club project.

Rails' "Living Costs" Set Record in 1948; Top 2 Billion Mark

Prices Paid for Fuel, Materials and Supplies, Higher Than They've Ever Been

Class I railroads in 1948 spent more for fuel and materials and supplies of all kinds used in connection with their operations than in any year on record, according to the Association of American Railroads.

Such expenditures in that year amounted to \$2,183,331,000. This is the first time in history that they have exceeded the \$2,000,000,000 mark.

Compared with 1947, the amount spent in 1948 was an increase of \$274,122,000 or 14.4 per cent. The amount also was an increase of nearly \$573,000,000, or 35.6 per cent, above such expenditures made in 1944, the war year when freight and passenger traffic was at an all time peak.

This increase over previous years is largely attributable to the fact that prices of fuel, forest products, iron and steel, and the thousands of other items required by the railroads were higher than they have ever been.

Mammoth Shortcake Will Serve 5,000 Visitors at Kalama, Wash., Strawberry Festival in June



A giant strawberry shortcake, claimed to be the world's largest, will be served to 5,000 visitors at the annual Kalama, Wash., Strawberry Festival, June 17 and 18. Two full days of sports and other entertainment are planned. At the 1947 festival a tremendous shortcake, a part of which is shown in the photograph with Miss Pearl Bailey, queen of the festival

and her court, was served to more than 4,000 persons. This year's cake will be even larger.

Here's what went into the 1947 cake: 5 barrels of flour, 5 sacks of sugar, a barrel of shortening, 1,000 eggs, 50 gallons of milk, a gallon of vanilla, 5 pounds of salt—topped by nearly a ton of luscious Marshall strawberries and 50 gallons of whipping cream.

COMING EVENTS IN THE NORTHERN PACIFIC COUNTRY

WASHINGTON

Bellingham—Blossomtime Festival, May 11-14.
Walla Walla—Spring Racing Meet, May 21-22.
Kalama—Strawberry Festival, June 17-18.
Aberdeen—Splash Celebration, July 4.
Toppenish—Pow Wow and Rodeo, July 2-4.
Chehalis—Southwest Washington Fair, Aug. 25-28.
Walla Walla—Southeastern Washington Fair, Sept. 2-5.
Ellensburg—Rodeo, Sept. 3-5.
Everett—Eagles Salmon Derby, Sept. 10-11.
Puyallup—Western Washington Fair, Sept. 17-25.
Yakima—Central Washington Fair, Sept. 28-Oct. 2.

OREGON

Milton—Pea Festival, May 6-7-8.
Portland—Portland Rose Festival, June 8-12.
Salem—Cherryland Festival, July 14-16.
Pendleton—Pendleton Round-up, Aug. 24-27.
Salem—Oregon State Fair, Labor Day Week.
Astoria—Astoria Salmon Derby, Aug. 30-Sept. 8.

IDAHO

Lewiston—Roundup, Sept. 9-11.

MONTANA

Missoula—Interscholastic Track Meet, May 12-14.
Laurel—Rodeo, May 28-29.
Billings—Go Western Rodeo and Parade, June 3-5.

Polson—Rodeo, June 4-5.
Deer Lodge—Rodeo, June 11-12.
Miles City—Range Riders Rodeo, June 17-19.
Darby—Rodeo, June 18-19.
Missoula—Rose Show, June 30.
Glendive—Go Western Days, June 27-July 5.
Livingston—Rodeo, July 2-4.
Red Lodge—Rodeo, July 2-4.
Forsyth—Horse Show, July 3-4.
Drummond—Rodeo, July 4.
Glendive—Rodeo and Race Meet, July 4-5.
Helena—Celebration, Discovery of Gold in Last Chance Gulch, July 14.
Butte—Rodeo, July 21-22.
Helena—Lewis & Clark Race Meet & Rodeo, July 29-31.
Polson—Cherry Regatta, July 30-31.
Big Timber—Rodeo, July 31.
Gardiner—Yellowstone Trail Ride, Aug. 3-12.
Bozeman—Bozeman Jaycee Roundup, Aug. 5-7.
Billings—Midland Empire Fair and Rodeo, Aug. 8-13.
Livingston—Trout Derby, Aug. 14.
Miles City—Eastern Montana Fair, Aug. 25-27.
Sidney—Richland County Fair and Rodeo, Aug. 29-31.
Deer Lodge—Race Meet, Sept. 4-5.

NORTH DAKOTA

Medora—Dedication Theodore Roosevelt National Memorial Park, June 4.
Dickinson—Rodeo, July 4.

MINNESOTA

Itasca Park—Bemidji Indian Days Centennial Pageant, July 2-3.

Bemidji—Paul Bunyan Canoe Derby, July 13.
Bemidji—Paul Bunyan Water Carnival, July 16-17.
Minneapolis—Aquatennial, July 22-31.
St. Paul—Pop Concerts and Ice Revues, July 13-Sept. 3.
St. Paul—Minnesota State Fair, Aug. 27-Sept. 5.
St. Paul—Rodeo, Sept. 17-25.

BOUQUETS FOR SERVICE ON NORTH COAST LIMITED

"Very comfortable, enjoyable trip—courtesy unexcelled—congratulations to your engineers for smooth jerkless handling"—Dr. and Mrs. D. B. Helena, Mont.

"Very much pleased with everything. The scenery is beautiful"—R. S. N., Minneapolis.

"The service is very good. The mountains are gorgeous"—J. R. N., Minneapolis, Minn.

"The smoothest, cleanest and finest train in U.S.A. Splendid meals and courteous service"—Mrs. N. M. S., Jamestown, N. D.

"I like the duplex—comfortable and reasonable"—P. A. D., Portland, Ore.

"Service fine—accommodations excellent—very comfortable"—J. L. H., Helena, Mont.

"Comfortable ride through beautiful country—good food"—Mrs. L. A. L., Washington, D. C.

"My first experience with a roomette. It was very satisfactory"—R. B. O., St. Paul.

"Beautiful train and fine riding qualities. Courteous service and most excellent meals"—H. L. C., Chicago.

Portland's Annual Rose Festival Set for June 8th to 12th

Grand Floral Parade Will Be June 10—Two-Day Showing of Prize Plants and Blooms

Dates for the forty-first annual Rose Festival, one of the world's most elaborate and colorful civic celebrations staged each year in Portland, Oregon, have been set for June 8 through 12.

The highlight of this gala spectacle will be the Grand Floral Parade on June 10. Fifty or more flower-laden floats and a comparable number of bands, mounted posses, and marching groups to escort the ornately decorated vehicles, will travel the circuitous five-mile parade route.

"Melodies in Flowers" has been selected as theme for the parade.

Wednesday evening, June 8, will mark the start of the festive period with Queen Coronation ceremonies extravagantly staged in Portland's Multnomah Stadium.

Rose Festival Association officials are arranging a repeat performance similar to last year's "Territorial Band Jamboree" for presentation on Thursday night, June 9, in the huge Civic amphitheater. Last year 1,500 high school bandmen brought roaring acclaim from the thousands of spectators jammed into the stadium by their precision drill and superb musicianship.

On both Thursday and Friday, June 9 and 10, the Portland Rose Society, oldest Rose Society in the world, will sponsor its annual public showing of hobbyist-grown roses with special displays of prize-winning plants.

Miniature of the Grand Floral Parade is the Junior Rose Festival Parade which travels Portland's East Side on Saturday morning with elementary school-age children as principals.

For the finals of Rose Festival week activities, the scene is shifted to the slopes of majestic Mt. Hood, 53 miles east of Portland, where world-famous ski stars assemble at Timberline Lodge for competition in the annual Golden Rose Ski Tournament.

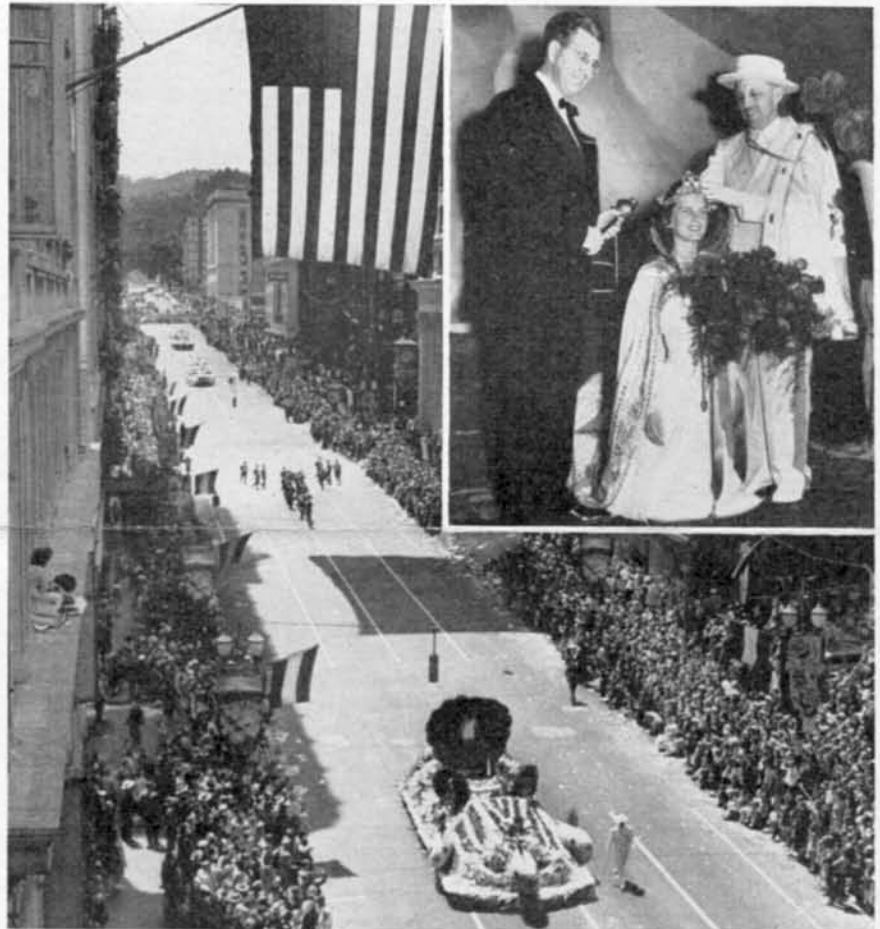
Annual Trail Ride Through Yellowstone Park August 3 to 12

Here's news of interest to folks who like trail riding and camping out in the mountains.

The annual Yellowstone Park Trail Ride will be August 3 to 12, starting from Gardiner, Mont. The cost of \$150 includes horse, tents, food and transportation of luggage. Riders must furnish their own sleeping bags.

For detailed information and reservations, address Alice B. Murphy, secretary, Yellowstone Park Trail Ride, Gardiner, Mont.

Diesel locomotives in 1948 handled nearly 40 per cent of the total passenger train car-miles of Class I railroads, surpassing coal-burning locomotives for the first time.



CITY OF ROSES—An estimated one million spectators will view the Grand Floral Parade at Portland's annual Rose Festival in June. The picture shows the 1948 parade moving down Sixth avenue. The inset picture shows the crowning of

Barbara I, queen of last year's Festival. At the left is Robert L. Eaton, president of the 1948 Rose Festival Association and right, Arthur Kohanek, prime minister of the Royal Rosarians.

Roundup Queen to Florida



En route east in April for a Florida vacation, two Gallatin county, Montana, girls boarded the North Coast Limited at Bozeman. They are Miss Charlotte Barnard of Manhattan, queen of the Bozeman Roundup and Miss Norma Stuart of Belgrade, her attendant. The girls were guests of the Bozeman Junior Chamber of Commerce, sponsors of the Roundup and of the Mac Nab Hotels

Company, which operates the hotel at Del Ray Beach, Fla.

In the picture, left to right: Hollis Elliott, president of the Chamber of Commerce; Miss Barnard, Miss Stuart, Robin MacNab, and George Sime, 1948 Roundup manager and state JayCee president.

Festival of Nations set for St. Paul Auditorium May 20-23

St. Paul's own interpretation of international understanding, the 1949 Festival of Nations, will be staged in the Municipal Auditorium arena May 20-23.

Moved up one year from the tri-annual schedule, the tribute to foreign culture's influence in America will celebrate the centennial year of Minnesota.

Caruso Named C. F. & P. A. at Cleveland

B. B. Caruso, formerly chief clerk in Northern Pacific's Pittsburgh traffic office, has been appointed city freight and passenger agent at Cleveland. T. L. Glover, steno-clerk, succeeded Caruso at Pittsburgh.