



N. P. 1363
6-24

NORTHERN PACIFIC RAILWAY COMPANY
AUTHORITY FOR EXPENDITURE

YEAR 1930

SUPERINTENDENT'S NO. 198

DEPT. NO. 3-1730

A. F. E. NO. 14

ENGINEERING DEPT. NO. 224-29

DISTRICT
BRANCH

STATE Wash

VAL. SEC. NO. 6

Tacoma Div. Main Line

AUTHORITY IS REQUESTED FOR A NET EXPENDITURE OF \$ 195

Accounting distribution as follows: (Distribution to be made in General Office.)

	Operating Expenses	Profit and Loss	Net Operating Expenses	Net Profit and Loss
Cost of property retired.....\$				
Value of salvage				
Incidental costs				
Total to Operating Expenses				
Total to Profit and Loss				
To Material and Supplies				
To Bills for Collection				
To Other Accounts				195.
Net charge to investment account—Additions and Betterments				195.
Total of distribution				

Budget reference:

Item 404-1930

Added to Joint Valuation
Month NOV 1930

Joint facility contract reference:

OW - GN: 7-1-09

The location is

on this company's property. To secure rights, it will be necessary

Location:

Castle Rock

Title

Installing valve in standpipe line

and

Reason:

We have had a great deal of trouble in connection with the pipe line at Castle Rock, it being necessary when repairs to tank were required, to drain the tank, taking considerable time and resulting in repairs being quite expensive. It is therefore proposed to install a shut-off valve in the pipe line near the tank, eliminating the necessity for draining the tank during repairs. The valve has been ordered and will be installed when received. Engineer's estimate and blue print attached.

Work to be done by company force under charge of Superintendent

Accounting to concentrate in the office of

Division Accountant

Checked and Estimated
President's Office

Date Dec 10

1929

Signature and Title:

APPROVED

J. E. Craver
General Superintendent

Superintendent

Asst. Chief Engr. or Engr. Maint. of Way

Mech. Supt., Supt. Telgh. or Signal Engr.

D. H. H. H.
Chief Engineer

General Manager

Vice President

For Comptroller

Charles Somers
President

Date of Final Approval
JAN 9 1930

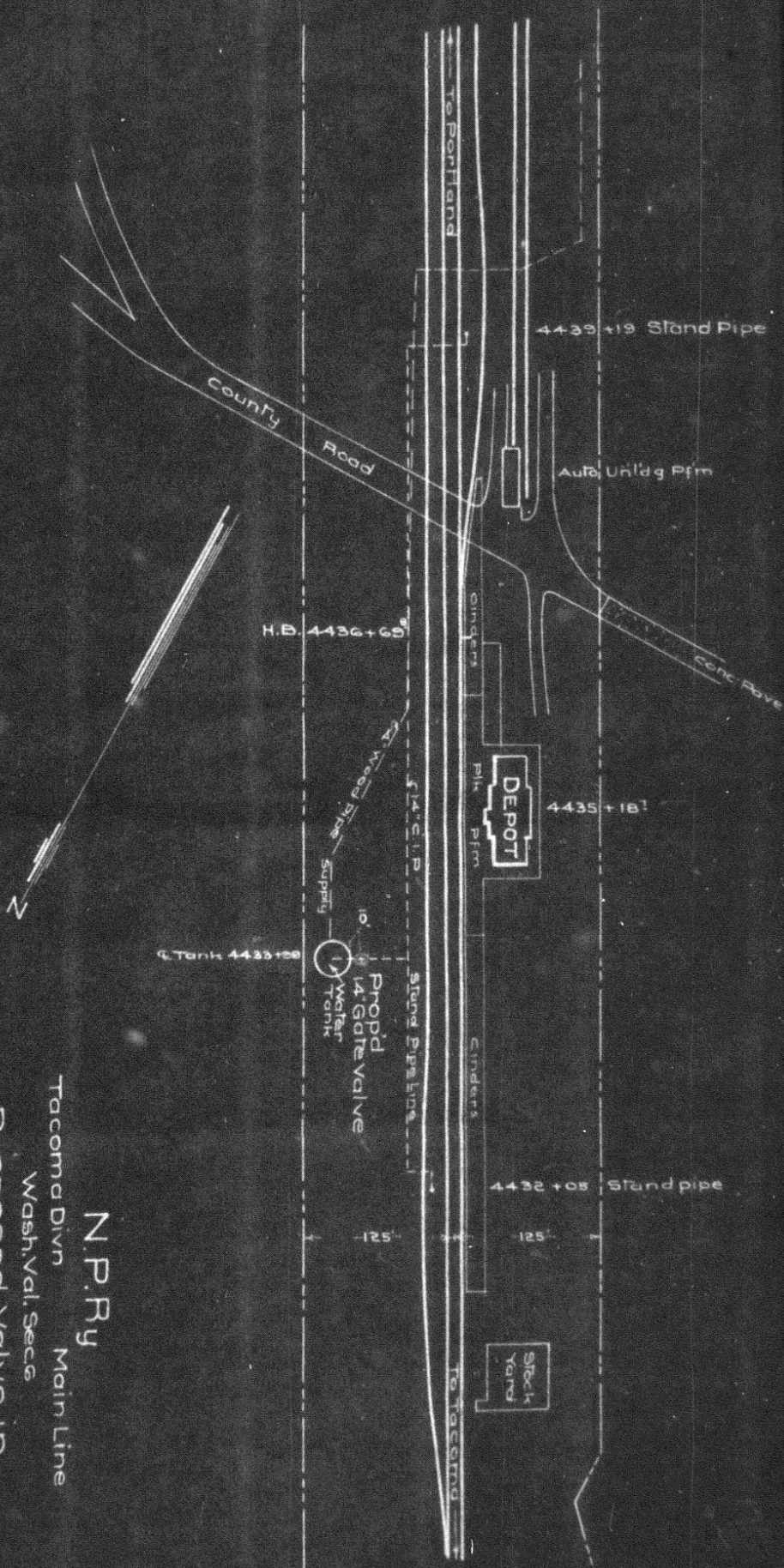
COMPTROLLER'S RECORD OF NOTICE OF APPROVAL AND OF COMPLETION

Form No. 1345 Issued

Work begun

Work finished

10/17/30



N.P.Ry
 Tacoma Divn Main Line
 Wash. Val. Sec.
 Proposed Valve in
 Stand Pipe Supply
 of
 CASTLE ROCK WN.
 Office of Dist. Engr. Seattle, Wn.
 Scale 1"=100' Dec. 5 1925