



N. P. 1363
6-24

NORTHERN PACIFIC RAILWAY COMPANY

COMPTROLLER'S COPY

1929

AUTHORITY FOR EXPENDITURE

1929

YEAR 1929

SUPERINTENDENT'S No.

No. 6

DEPT. NO.

ENGINEERING DEPT. NO. 9

A. F. E. NO.

471

Lake Superior Div.

Superior Terminal

DISTRICT STATE

Wis

VAL. SEC. NO. 3

AUTHORITY IS REQUESTED FOR A NET EXPENDITURE OF \$1352.00

Accounting distribution as follows: (Distribution to be made in General Office.)

	Operating Expenses	Profit and Loss	Net Operating Expenses	Net Profit and Loss
Cost of property retired	816		308	
Value of salvage	508		368	
Incidental costs				
Total to Operating Expenses				676 ✓
Total to Profit and Loss				508 ✓
To Material and Supplies				
To Bills for Collection				
To Other Accounts				676 ✓
Net charge to investment account—Additions and Betterments				1860 ✓
Total of distribution				

COST AT CURRENT ADJUSTMENT

MADE IN

Original Cost Adjustment
Made in 11-3-1930

Total

Added to Joint Valuation
MAR 1931

Item No. 589-1929

Valuation Class of Work: No. 3 ✓

Budget reference:

Joint facility contract reference: Joint with CMSt&PRR Contract Oct. 1, 1900.

The location is

on this company's property. To secure rights, it will be necessary

Location:

Superior East End

Title

Proposed to relay high line curve with 90# rail.

and

Reason

This track carries large tonnage, which includes all grain from connecting lines and our own line for elevators and mills, also all coal traffic originating at Dock 4 and Pittsburgh Dock 5. Present rail has been in this track since 1907, is badly bent and kinked.

This has been personally inspected by General Manager, General Superintendent and Division Superintendent, and it is recommended it be relayed with 90 lb. rail.

Work to be done by company force under charge of Contract

Accounting to concentrate in the office of

Superintendent

Signature and Title:

M. Jacobus
Superintendent

Checked and Entered
President's Office

Date 12-19-28 19

APPROVED

N. A. Strauss
General Superintendent

J. J. ...
Asst. Chief Engr. or Engr. Maint. of Way

M. ...
General Manager

Mech. Supt., Supt. Telgr. or Signal Engr.

Bernard ...
Chief Engineer

M. ...
Vice President

W. ...
For Comptroller

Charles ...
President

Date of Final Approval

APR 1 1929

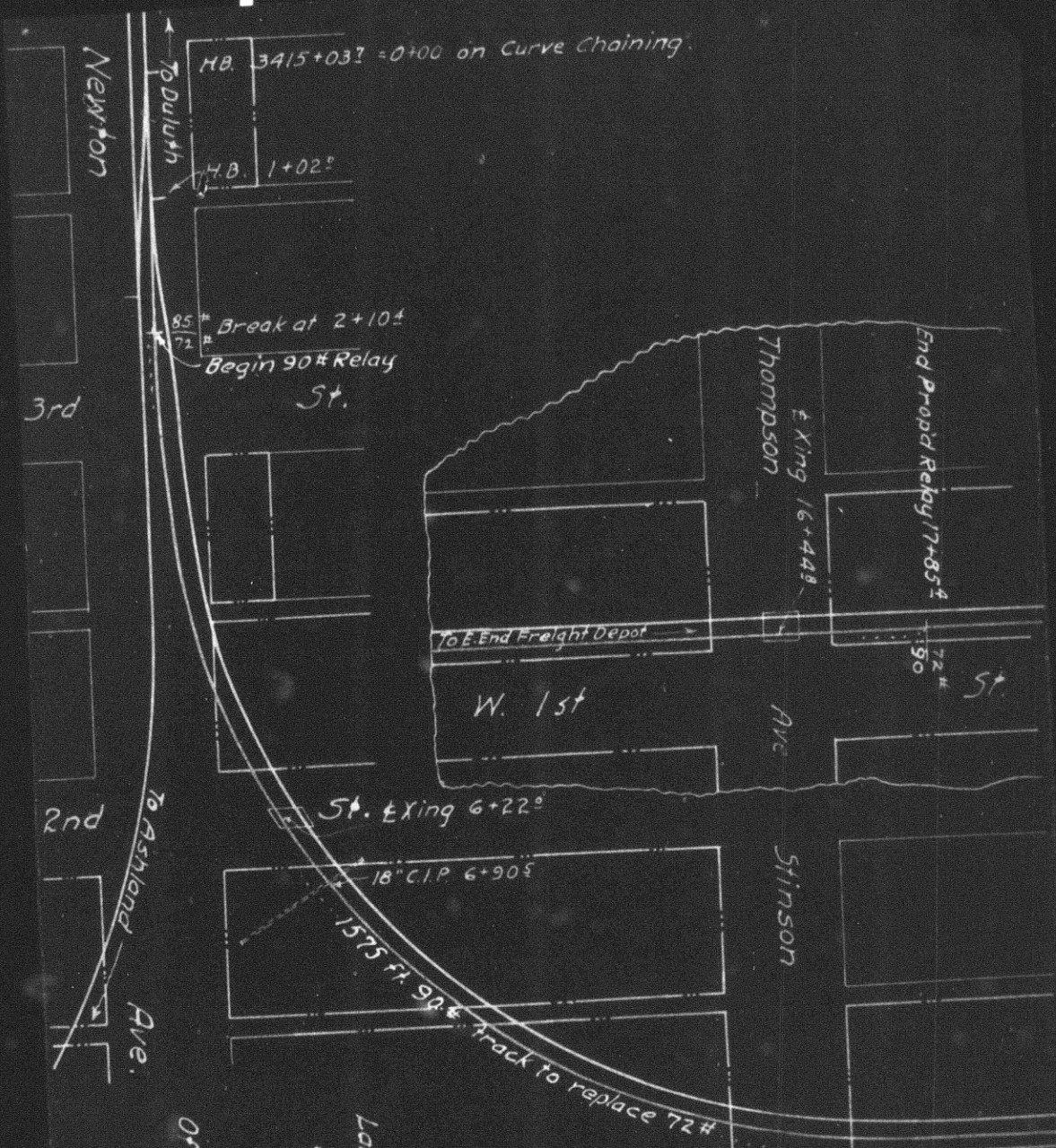
COMPTROLLER'S RECORD OF NOTICE OF APPROVAL AND OF COMPLETION

Form No. 1346 issued

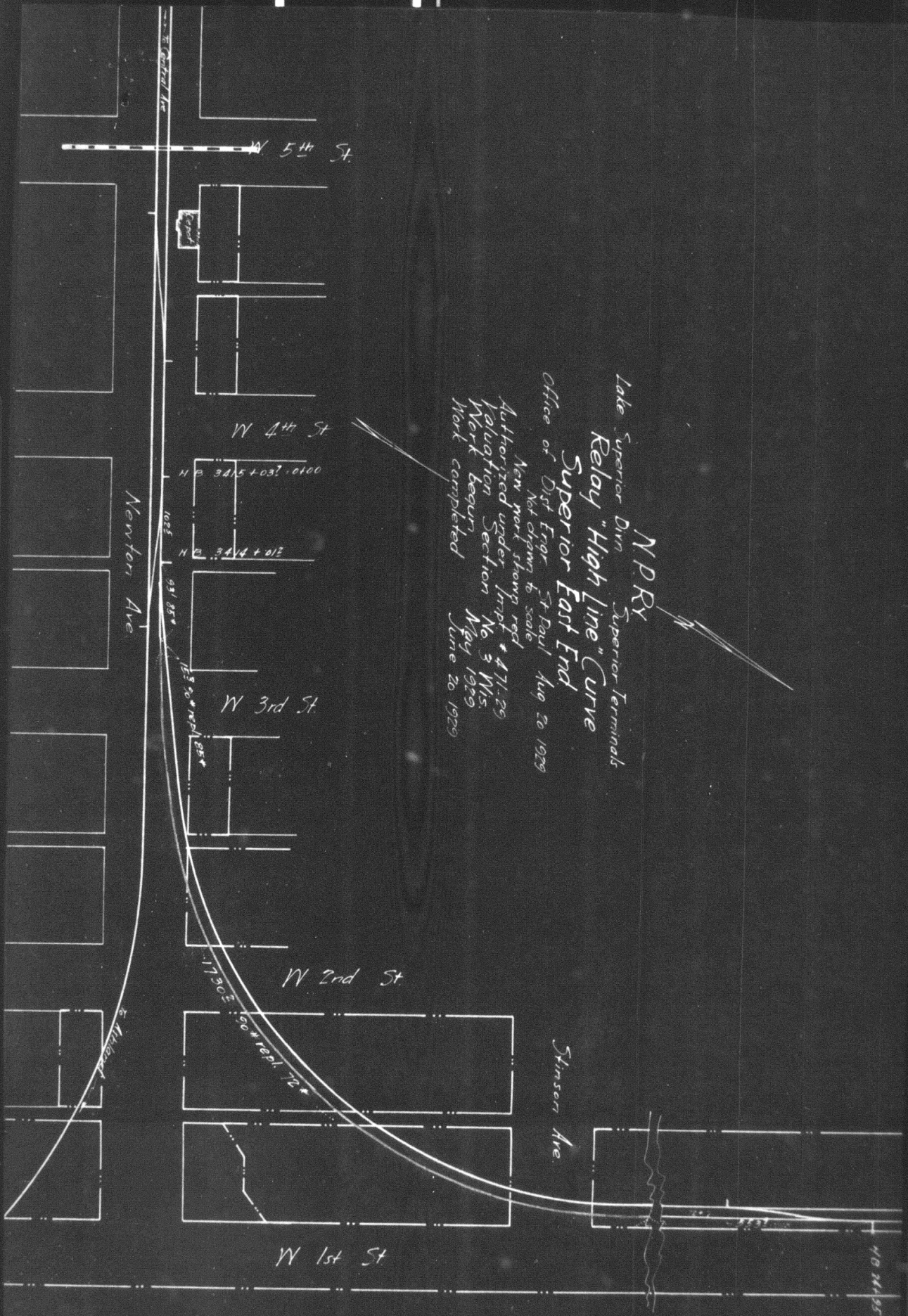
19 Work begun

19 Work finished

June 20 1929



N.P.R.Y.
 Lake Superior Div. - Superior Terms
 Relay High Line Curve.
 Superior, East End.
 Scale 1"=100'
 Prop'd Relay shown thus _____
 Office of Dist. Engr., St. Paul, Dec. 5-1922
 Vol. Sec #3-Mis.



Lake Superior Div
 Superior Terminals
 Relay "High Line" Curve
 Superior East End
 N.P.R.Y.
 Office of Dist. Engr. St. Paul Aug 20 1929
 Not changing to scale.
 New work stamps reqd.
 Authorized under Inscrpt # 471-29
 Valuation Section No. 3 M.S.
 Work begun May 1929
 Work completed June 20 1929

40 MISS