



N. P. 1363
6-24

NORTHERN PACIFIC RAILWAY COMPANY

AUTHORITY FOR EXPENDITURE

COMPTROLLER'S COPY.

SUPERINTENDENT'S No. **13**

DEPT. No.

YEAR **1929**

No.

ENGINEERING DEPT. No. **26-29**

A. F. E. No. **462**

P A S C O DIV. **THIRD SUBDIVISION** DISTRICT **WASH.**
BRANCH STATE VAL. SEC. No. **19**

AUTHORITY IS REQUESTED FOR A NET EXPENDITURE OF \$ **(2386.)**

Accounting distribution as follows: (Distribution to be made in General Office.)

	Operating Expenses	Profit and Loss	Net Operating Expenses	Net Profit and Loss
Cost of property retired.....		7832		
Value of salvage.....		3229		
Incidental costs.....				4603
				718
Total to Operating Expenses.....				
Total to Profit and Loss.....				
Acct 619 Loss on Retired R & E				
To Material and Supplies.....				5321 ✓
To Bills for Collection.....				3229 ✓
To Other Accounts.....				
Net charge to investment account—Additions and Betterments.....				7707 ✓
Total of distribution.....				843 ✓

Original Cost Adjustment
Made in 1929

Budget reference: **NOI IN COST**

Class of Work: No. **10**

Joint facility contract reference: **Non Joint**

The location is _____ on this company's property. To secure rights, it will be necessary

Location: **Grandview, Washington**

Title: **Removal of Wye Track.**

and **Track decrease 3168.6 ft.**

Reason: **The wye track at Grandview was constructed at the time the Sunnyside Branch was extended to Grandview, and prior to extending the line to connect with the Main Line at Gibbon. Since the Yakima-Grandview passenger service was discontinued, the wye has not been used for more than a year. The indications are that it will not be required in connection with future operation any more than a wye would be required at any other intermediate station on this Division. The track in this wye is in poor condition, and the crossing frog in the main track is in such condition as to require replacement within a short time, at an expense of approximately \$300.00. As there does not appear at this time to be any necessity for maintaining this wye it is recommended that the track be removed in accordance with the attached sketch and estimate.**

Work to be done by ~~XXXX~~ company force under charge of **Superintendent**

Accounting to concentrate in the office of **Division Accountant**

Location and Office
President's Office

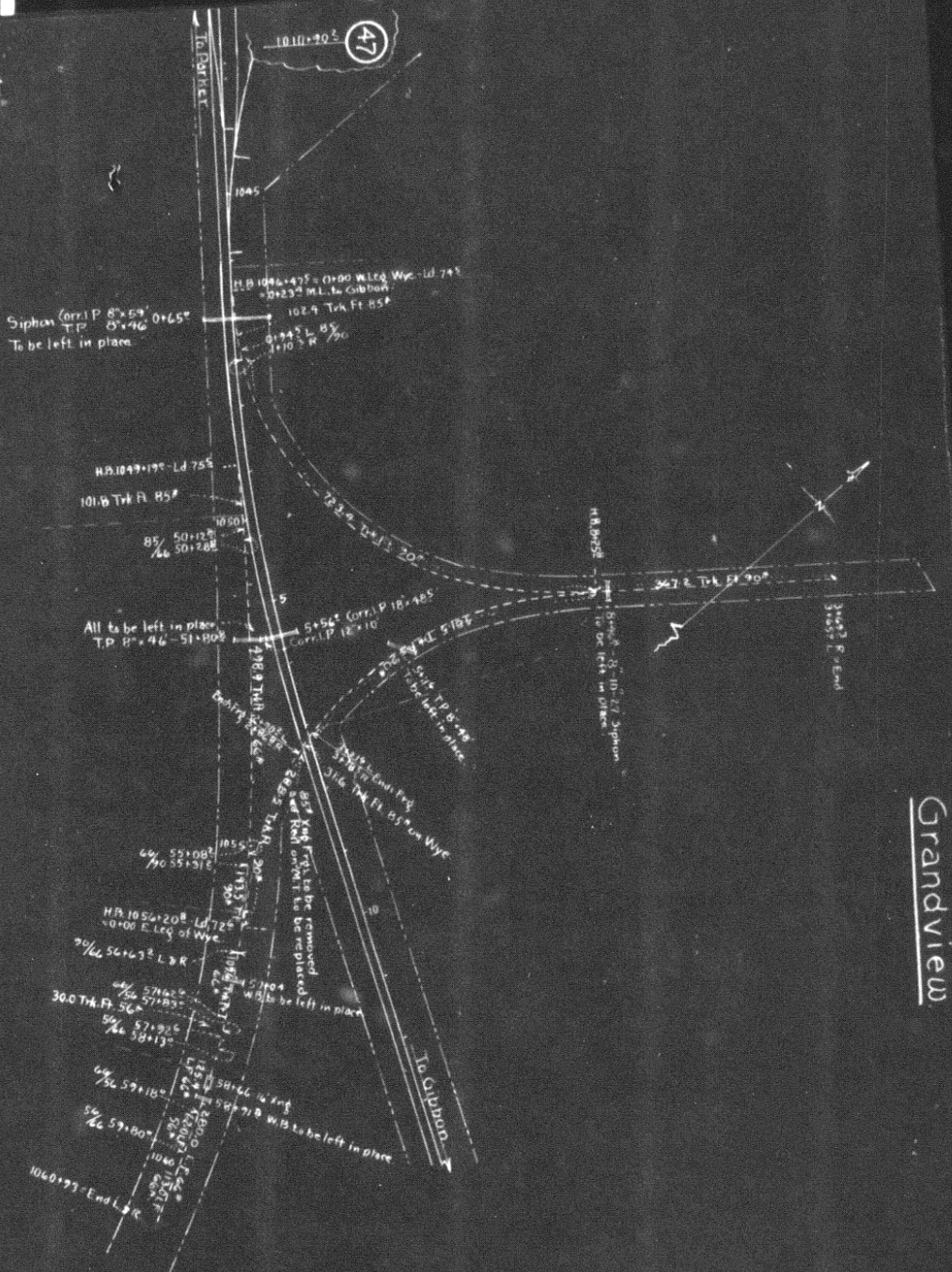


Signature and Title: *[Signature]* **Superintendent** Date **Feb. 13th 1929**

<i>[Signature]</i> General Superintendent	<i>[Signature]</i> Asst. Chief Engr. or Engr. Maint. of Way	<i>[Signature]</i> General Manager
<i>[Signature]</i> Mech. Supt., Supt. Teigh. or Signal Engr.	<i>[Signature]</i> Chief Engineer	<i>[Signature]</i> Vice President
<i>[Signature]</i> For Comptroller	<i>[Signature]</i> President	Date of Final Approval { MAR 4 7 1929 } 19..

COMPTROLLER'S RECORD OF NOTICE OF APPROVAL AND OF COMPLETION

Form No. 1345 issued..... 19..... Work begun..... 19..... Work finished **April 30 1929**



Grandview

N. P. RY.
 3rd Sub-div.
 Pasco Div.
 Proposed to Remove Wye Track,
 Grandview,
 Wash.
 Scale: 1" = 200'
 Office Dist. Engr. Spokane, Feb. 7, 1929.
 Prop. new work shown thus: _____
 Track to be removed: - - - - -
 Valuation Section, Wash # 19.
 G.P.