



N. P. 1363
6-24

NORTHERN PACIFIC RAILWAY COMPANY

AUTHORITY FOR EXPENDITURE

COMPTROLLER'S COPY

1929 1929
YEAR 1929

SUPERINTENDENT'S No. 43

DEPT. No.

A. F. E. NO. 446

No.

ENGINEERING DEPT. No. 51

LAKE SUPERIOR DIV. Cuyuna Northern Line DISTRICT STATE Minnesota VAL. SEC. No. 12-A
BRANCH

AUTHORITY IS REQUESTED FOR A NET EXPENDITURE OF \$ 1402.00

Accounting distribution as follows: (Distribution to be made in General Office.)

	Operating Expenses	Profit and Loss	Net Operating Expenses	Net Profit and Loss
Cost of property retired.....\$	4084			
Value of salvage	2623		1461	463
Incidental costs				
Total to Operating Expenses				\$ 1924 ✓
Total to Profit and Loss				2623 ✓
To Material and Supplies				
To Bills for Collection				
To Other Accounts				(522)
Net charge to investment account—Additions and Betterments				\$ 4025 ✓
Total of distribution				

Original Cost Adjustment
Made in 3-29-1929
Final

Budget reference: **Item 276**
Joint facility contract reference: **Not Joint**

Class of Work: No. 10 ✓

The location is --- on this company's property. To secure rights, it will be necessary

Location: **Near Iron-ton.**

Title: **Rearrangement of tracks to serve the Feigh Mine.**

Reason: The new entry made into the Mahnomen Mine necessitated the relocating of our Main Line between Iron-ton and Trommald. The Mahnomen Mine have relocated their shops on the site of our old Main Line and this change in the shop location necessitates new connections into the Feigh Mine and new location of the spur track to serve the present Mahnomen Shop location.

The Mahnomen Mine has taken up their old shop tracks including the Soo Mahnomen track and the proposed track arrangement will give the Mining Company ample service, although the Soo Line may possibly make a connection at some time in the future as outlined on attached print.

This work should be done the first thing in the spring to be ready for handling coal and machinery tonnage for the Mining Company.

Work to be done by company force under charge of Superintendent.

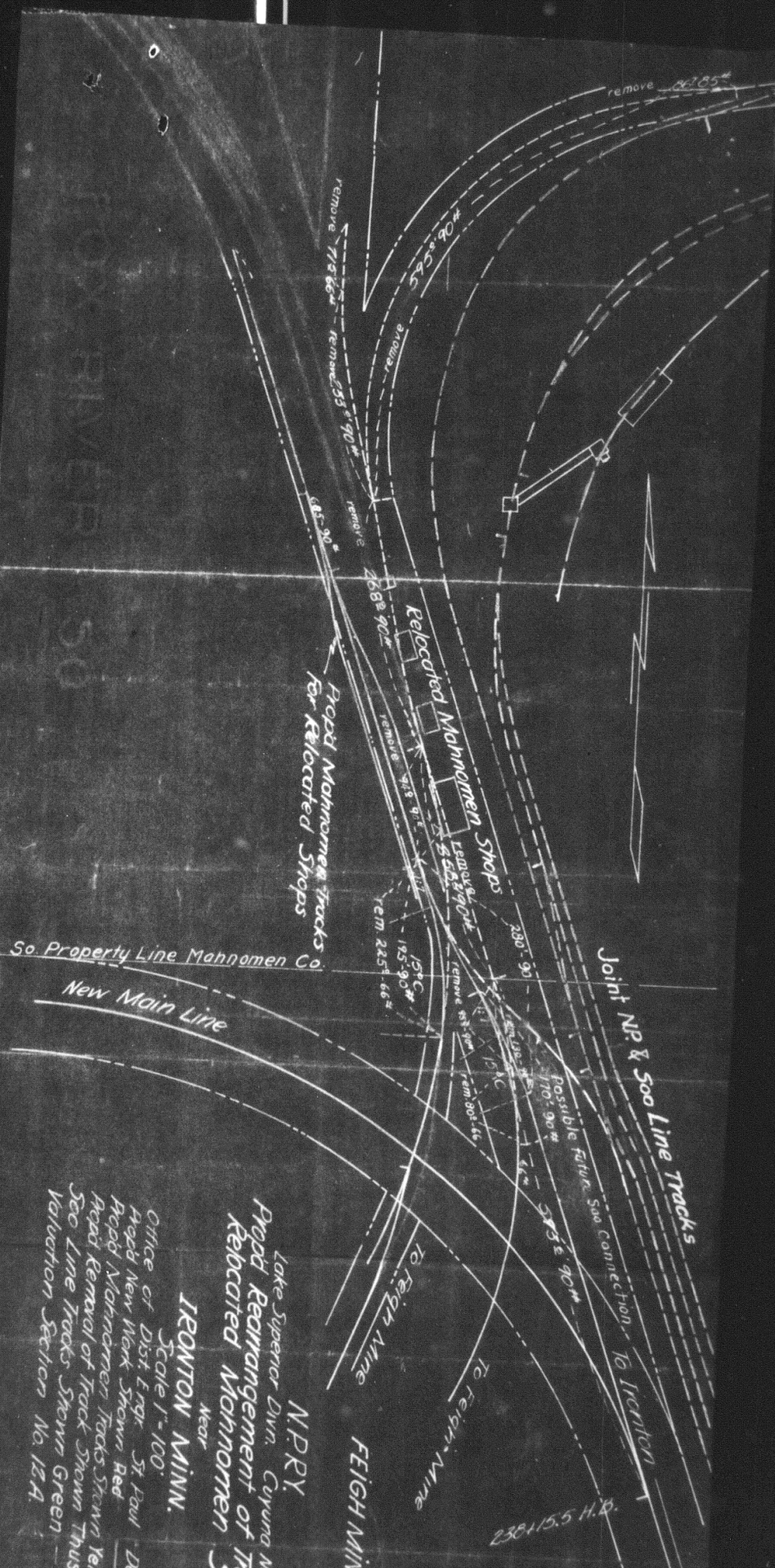
Accounting to concentrate in the office of Superintendent.

Signature and Title: *H. Jacobuss* Superintendent, Checked and Entered President's Office Date Feb. 19th 19 29

APPROVED <i>H. A. Steiner</i> General Superintendent.	<i>J. H. ...</i> Asst. Chief Engr. or Engr. in-charge of Work.	<i>...</i> General Manager.
<i>...</i> Mech. Supt., Supt. Tel'ph. or Signal Engr.		<i>...</i> Vice President.
<i>...</i> Chief Engineer.	<i>Charles ...</i> President.	Date of Final Approval { <i>Mar - 7 1929</i> } 19__
<i>...</i> For Comptroller.		

COMPTROLLER'S RECORD OF NOTICE OF APPROVAL AND OF COMPLETION

Form No. 1345 issued 19__ Work begun 19__ Work finished *7/20 30* 19__



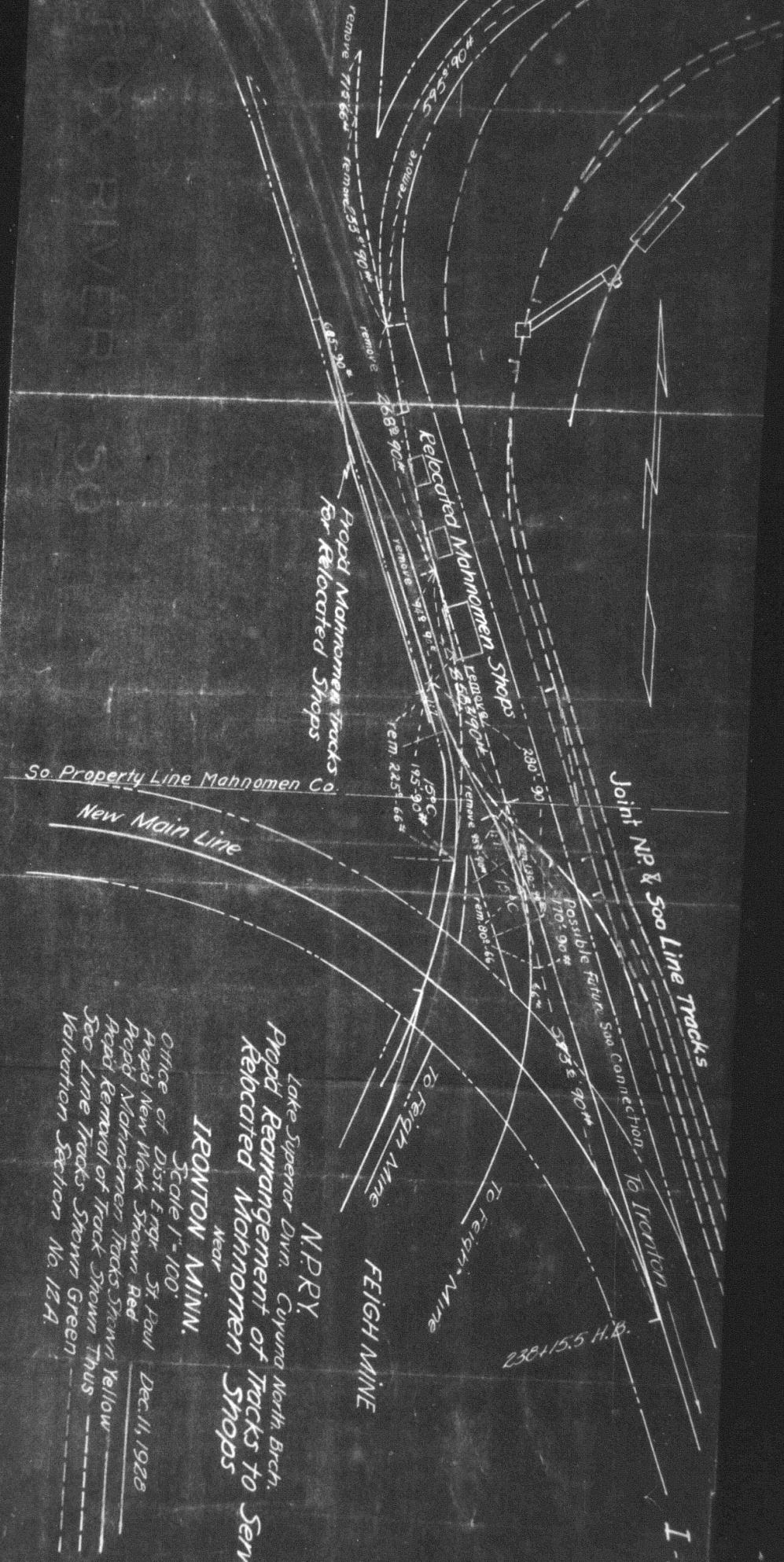
Lake Superior Divn. Cuyuna North
 NP&S
 Feigh Mine
 Iscription
 238° 15.5 H.P.

Office of Dist. Engr. St. Paul
 Prop'd New Work Shown Red
 Prop'd Mahanomen Tracks Shown Yellow
 Prop'd Removal of Track Shown Green
 Valuation Section No. 124

IRONTON MINN.
 Near

Prop'd Rearrangement of Tracks
 Relocated Mahanomen Shops

Dec 1



Lake Superior Divn. Cuyuna North Brch.
 N.P.R.Y.
 Prop'd Rearrangement of Tracks to Serve
 Relocated Mahnomens Shops
 Near
IRONTON MINN.
 Scale 1" = 100'
 Office of Dist Engr. St. Paul
 Prop'd New Work Shown Red
 Prop'd Mahnomens Tracks Shown Yellow
 Prop'd Removal of Track Shown Green
 So. Line Tracks Shown Green
 Valuation Section No. 124
 Dec. 11, 1928