



N. P. 1363  
6-24

# NORTHERN PACIFIC RAILWAY COMPANY AUTHORITY FOR EXPENDITURE

COMPTROLLER'S COPY

SUPERINTENDENT'S No. **18**  
No. **181**

**1929**

DEPT. No.  
ENGINEERING DEPT. No. **22**

**1929**  
YEAR **1929**

A. F. E. NO. **444**

**Lake Superior** Div. **Duluth Terminals** DISTRICT STATE **Minn.**

VAL. SEC. No. **1**

AUTHORITY IS REQUESTED FOR A NET EXPENDITURE OF \$ **920.00**

Accounting distribution as follows: (Distribution to be made in General Office.)

	Operating Expenses	Profit and Loss	Net Operating Expenses	Net Profit and Loss
Cost of property retired	440			
Value of salvage	370			
Incidental costs			70	
			325	
Total to Operating Expenses				
Total to Profit and Loss				395
To Material and Supplies		10		
To Bills for Collection				370
To Other Accounts				241
Net charge to investment account—Additions and Betterments				264
Total of distribution				1290

**COST AT CURRENT ADJUSTMENT  
MADE IN**

Original Cost Adjustment  
Made in **579.30**

Ownership by N.P.R. Co. 0-2-25-90

Budget reference: **Item 89**

Class of Work: No. **3**

Joint facility contract reference: **Joint with CS&PM&O Ry Contract March 1, 1886**  
**Joint with MS&P&SN Ry Contract Jan. 1, 1920.**  
on this company's property. To secure rights, it will be necessary

The location is **Duluth**  
Title **Relay portion of Universal Milling Company track.**

Reason: **The Railway portion of track serving the Universal Milling Company is partly on a curve consisting of badly worn 87# and 56# rail. There is a great deal of traffic on these tracks, causing heavy mechanical wear on the ties and as the rail is badly kinked it is proposed to relay this part of the track with 3rd Class 90# rail.**

Work to be done by company force under charge of **Superintendent**

Accounting to concentrate in the office of **Superintendent**

Signature and Title: **Jacobus**  
Superintendent

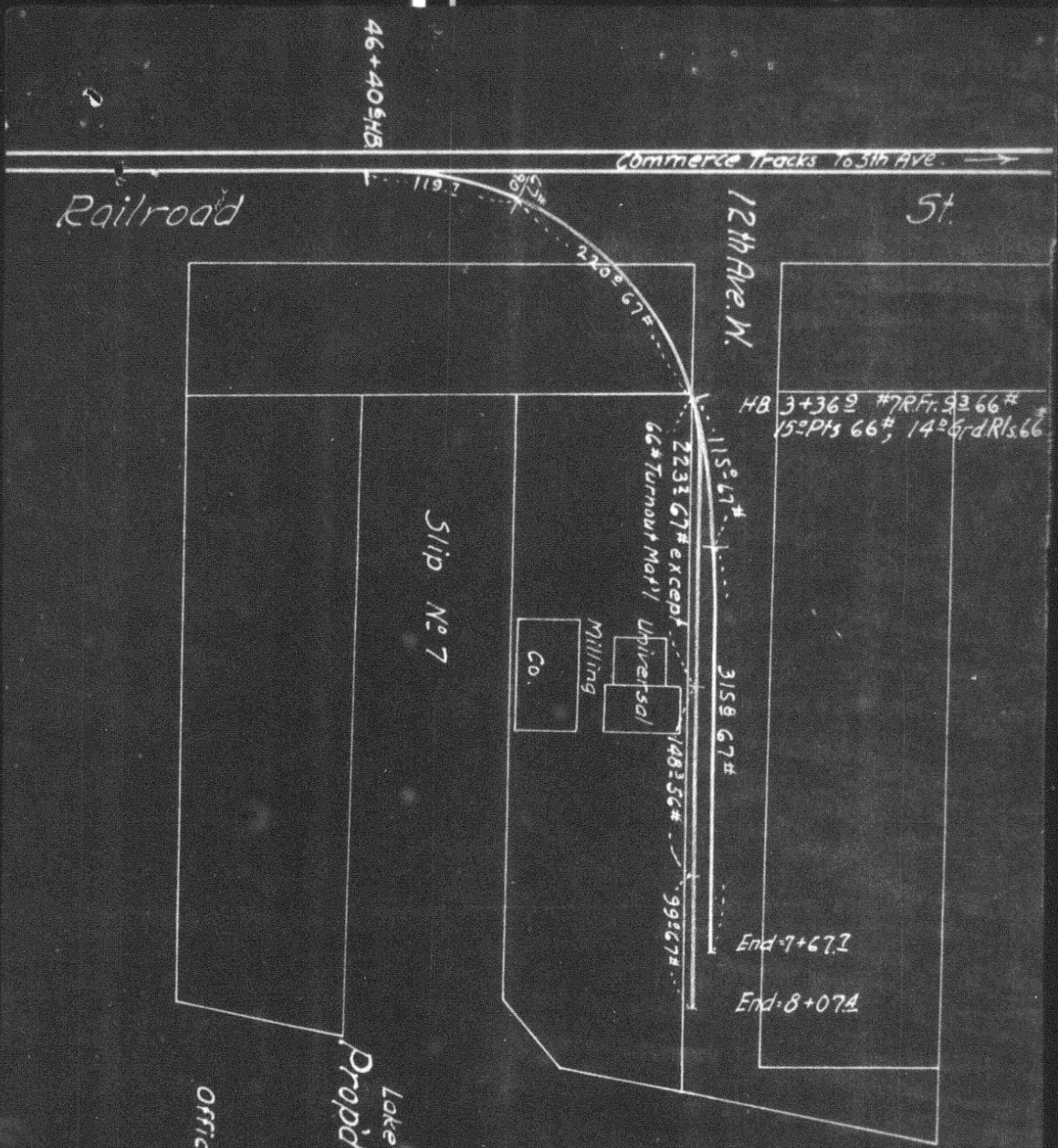
Checked and Entered  
President's Office  
Date **Jan. 8th 1929**



<b>N. K. Strickland</b> General Superintendent.	<b>Phelps</b> Asst. Chief Engr. or Insp. Maint. of Way.	<b>Hauter</b> General Manager.
<b>Demas</b> Chief Engineer.	<b>W. J. ...</b> Vice President.	
<b>W. J. ...</b> For Comptroller.	<b>Charles Sommeil</b> President.	Date of Final Approval <b>MAR 26 1929</b>

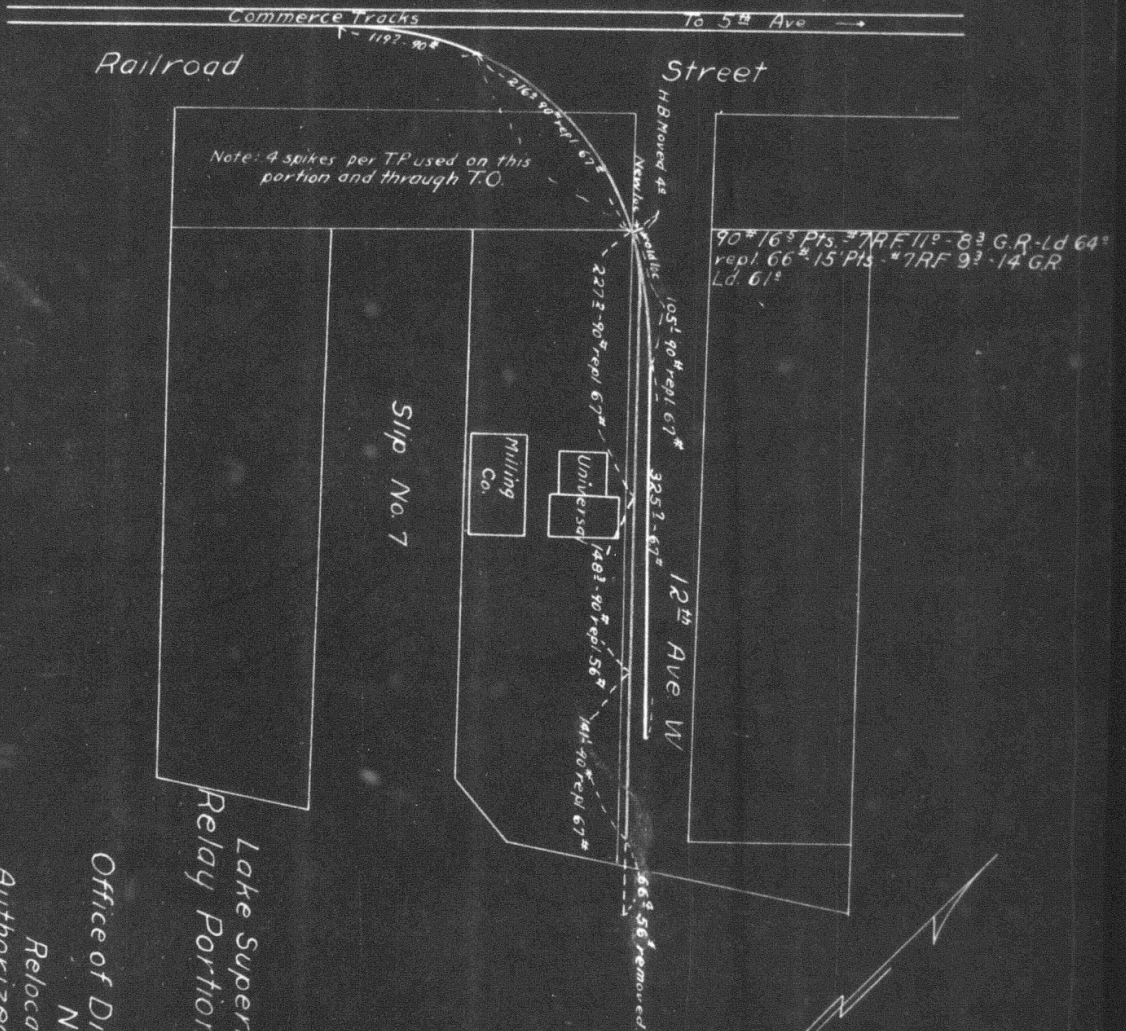
### COMPTROLLER'S RECORD OF NOTICE OF APPROVAL AND OF COMPLETION

In No. 1345 issued \_\_\_\_\_ 19 \_\_\_\_\_ Work begun \_\_\_\_\_ 19 \_\_\_\_\_ Work finished **June 11** 19 **29**



N.P.R.Y.  
 Lake Superior Div'n ~ Duluth Terminals.  
 Prop'd Relay, Universal Milling Co. Track.  
 Duluth, Minn.  
 Scale 1" = 100'  
 Prop'd Relay shown thus  
 Office of District Engr., St. Paul, Dec. 13-1928.  
 Vol. Sec # 1-Minn.

HB 46+40.5



Lake Superior Div. N.P.R.Y. Duluth Terminals  
 Relay Portion of Universal Mill Co's Tracks.  
 Duluth

Office of Dist Engr. St Paul, Aug. 6, 1929.  
 New Work Shown Red  
 Relocated Work Shown Yellow  
 Authorized Under A.F.E. No. 444-29  
 Work Begun May, 1929  
 Work Completed June 7, 1929  
 Val. Sec. No. 1-Minn