



N. P. 1363
6-24

NORTHERN PACIFIC RAILWAY COMPANY

AUTHORITY FOR EXPENDITURE

1929
YEAR 1929

SUPERINTENDENT'S NO. 18
No.

DEPT. No.
ENGINEERING DEPT. No. 27-29

A. F. E. NO. 408

Idaho Div. First District

DISTRICT STATE Montana VAL. SEC. No. 5
BRANCH

AUTHORITY IS REQUESTED FOR A NET EXPENDITURE OF \$9985

Accounting distribution as follows: (Distribution to be made in General Office.)

	Operating Expenses	Profit and Loss	Net Operating Expenses	Net Profit and Loss
Cost of property retired	\$ 9964	\$	\$ 4978	
Value of salvage	4986		2551	
Incidental costs				\$ 7529 ✓
Total to Operating Expenses				4986 ✓
Total to Profit and Loss				
To Material and Supplies				
To Bills for Collection				
To Other Accounts				2456 ✓
Net charge to investment account—Additions and Betterments				\$ 14971 ✓
Total of distribution				

Budget reference: 1929 Budget Item 75 Original Cost Adjustment
Made in 11-4-1920 of Works No. 3 ✓

Joint facility contract reference: Non Joint

The location is on this company's property. To secure rights, it will be necessary to make an Original Cost Adjustment Made in 2-28-1921

Location: Paradise to Idaho State Line.

Title: Relay curves 9-A, 10-A, 17-A, 17-B and 85.

Reason: These curves, laid in 1912 and 1918 with 90-lb rail, are badly worn. Proposed that they be relaid with 100-lb and 130-lb RE rail in 1929.

The relays proposed are in accordance with recommendation of Engineer of Track, following his annual inspection.

Work to be done by company force under charge of Superintendent.

Checked and Entered President's Office



Accounting to concentrate in the office of Division Accountant.

Signature and Title: *[Signature]* Supt.

APPROVED: *[Signature]* General Superintendent.

[Signature] Asst. Chief Engr. or Engr. Maint. of Way

[Signature] General Manager.

[Signature] Mech. Supt., Supt. Telegraph or Signal Engr.

[Signature] Chief Engineer.

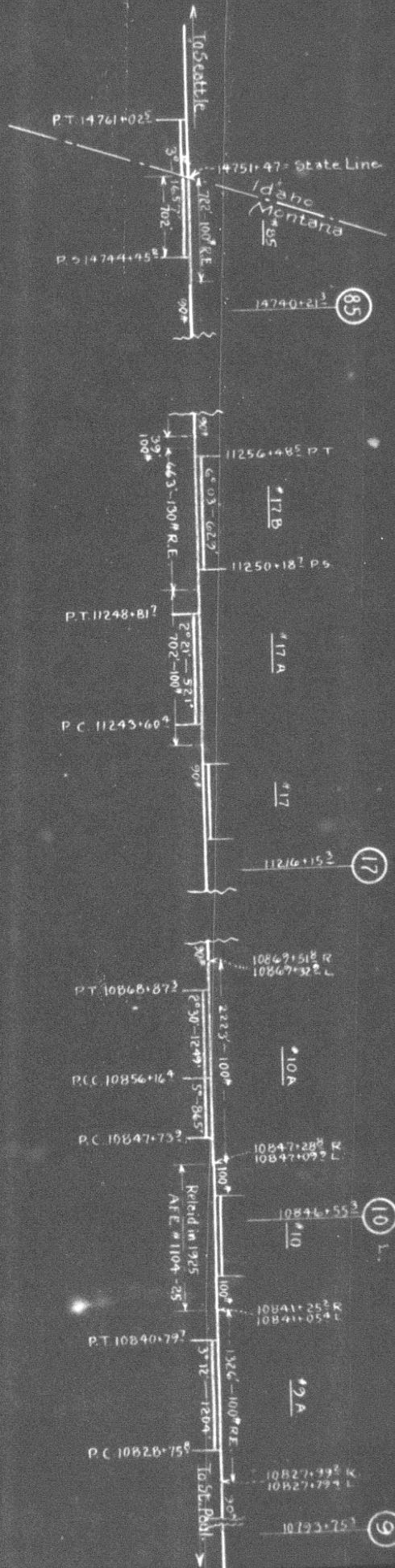
[Signature] For Comptroller.

[Signature] Charles Somerville

Date of Final Approval: MAR 19 1929

COMPTROLLER'S RECORD OF NOTICE OF APPROVAL AND OF COMPLETION

Form No. 1345 issued 19. Work begun 12. Work finished 10-20-29



N.P.R.V.
 Idaho Div. Main Line
 Proposed Curve Relays,
 Paradise to Idaho State Line.

Not drawn to scale.
 Office Dist. Engr. Spokane, Jan 30, 1929
 Prop. new work shown thus: _____
 Valuation Section, Montana # 5
 G.B.
 1929 Budget.