



N. P. 1363  
6-24

NORTHERN PACIFIC RAILWAY COMPANY  
AUTHORITY FOR EXPENDITURE

COMPTROLLER'S COPY  
YEAR 1929  
A. F. E. NO. 384

SUPERINTENDENT'S No. 15  
No.

DEPT. No.  
ENGINEERING DEPT. No. 9

Dakota Div. Main Line

BRANCH STATE ND

VAL. SEC. No. 2

AUTHORITY IS REQUESTED FOR A NET EXPENDITURE OF \$10467.

Accounting distribution as follows: (Distribution to be made in General Office.)

	Operating Expenses	Profit and Loss	Net Operating Expenses	Net Profit and Loss
Cost of property retired.....	12093		5638	
Value of salvage.....	6455		2150	
Incidental costs.....				7788 ✓
Total to Operating Expenses.....				6455 ✓
Total to Profit and Loss.....				
To Material and Supplies.....				
To Bills for Collection.....				2679 ✓
To Other Accounts.....				
Net charge to investment account—Additions and Betterments.....				16922 ✓
Total of distribution.....				

COST AT CURRENT ADJUSTMENT  
19

Budget reference: Item 65 Original Cost Adjustment  
Made in 6-24-30 Class of Work: No. 3 ✓  
Joint facility contract reference: Not Joint

The location is ----- on this company's property. To secure rights, it will be necessary

Location: Mandan (Nr)  
Title: Relay Main Line Rail -

Reason: Eighty-five pound and ninety pound rail between Main Line M.P. 197 plus 4824, and 199 plus 1447, Mandan bottom, is badly battered and worn and should be renewed. This covers that portion of the track between West end of Dakota Division and the West end of the second curve East thereof, the curve just West of the Missouri River bridge. This rail was listed for relay following inspection by Engineer of Track.  
It is proposed to proceed accordingly as per estimate and sketch attached.

Work to be done by company force under charge of Superintendent.

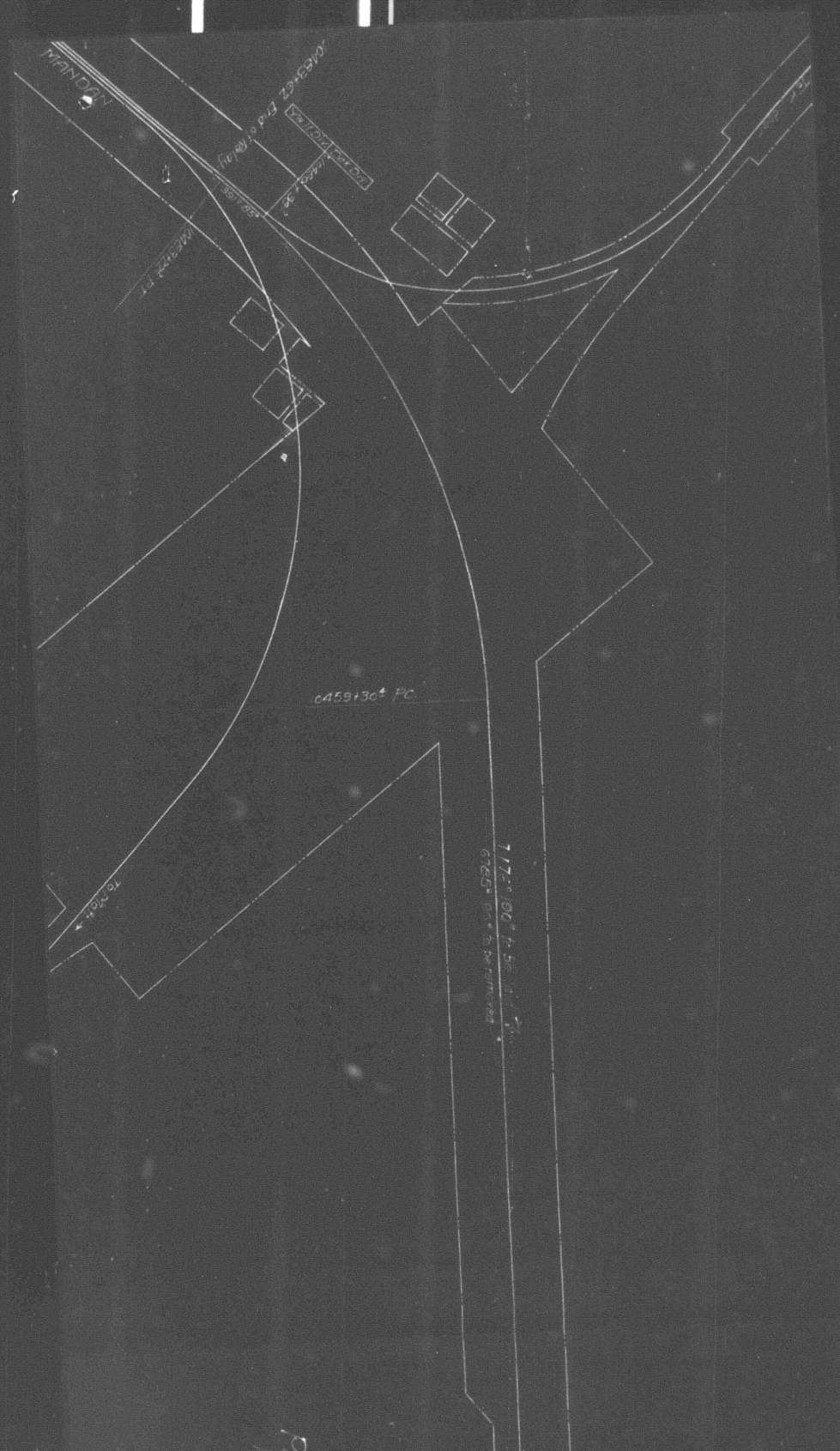
Checked and Entered  
President's Office

Accounting to concentrate in the office of Division Accountant.  
Signature and Title: *D. S. Cook* Superintendent Date January 2 19 29

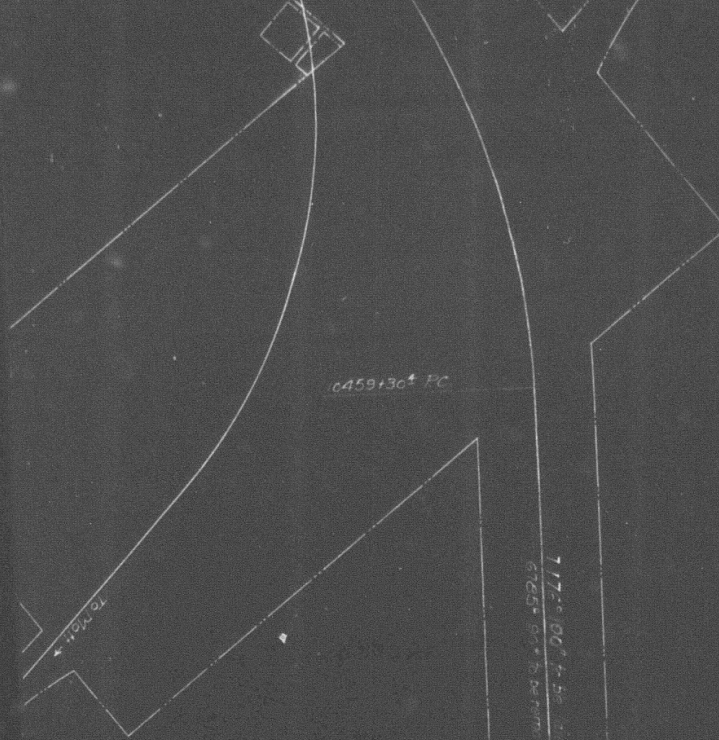
APPROVED: *H. A. Strachen* General Superintendent  
*[Signature]* Asst. Chief Engr. or Engr. Maint. of Way  
*[Signature]* General Manager  
 Mech. Supt., Supt. Telgh. or Signal Engr.  
*[Signature]* Chief Engineer  
*[Signature]* Vice President  
*[Signature]* For Comptroller  
 Date of Final Approval { MAR 14 1929 }  
 President

COMPTROLLER'S RECORD OF NOTICE OF APPROVAL AND OF COMPLETION  
19. Work begun 7-20 19. Work finished 1-29





Date: 1/1/40  
 Proposed by: J. C. ...  
 100' P.C. ...  
 Office of Dist. Engr. S. B. ...  
 Division Sect. ...  
 Eng. ...  
 City of ...



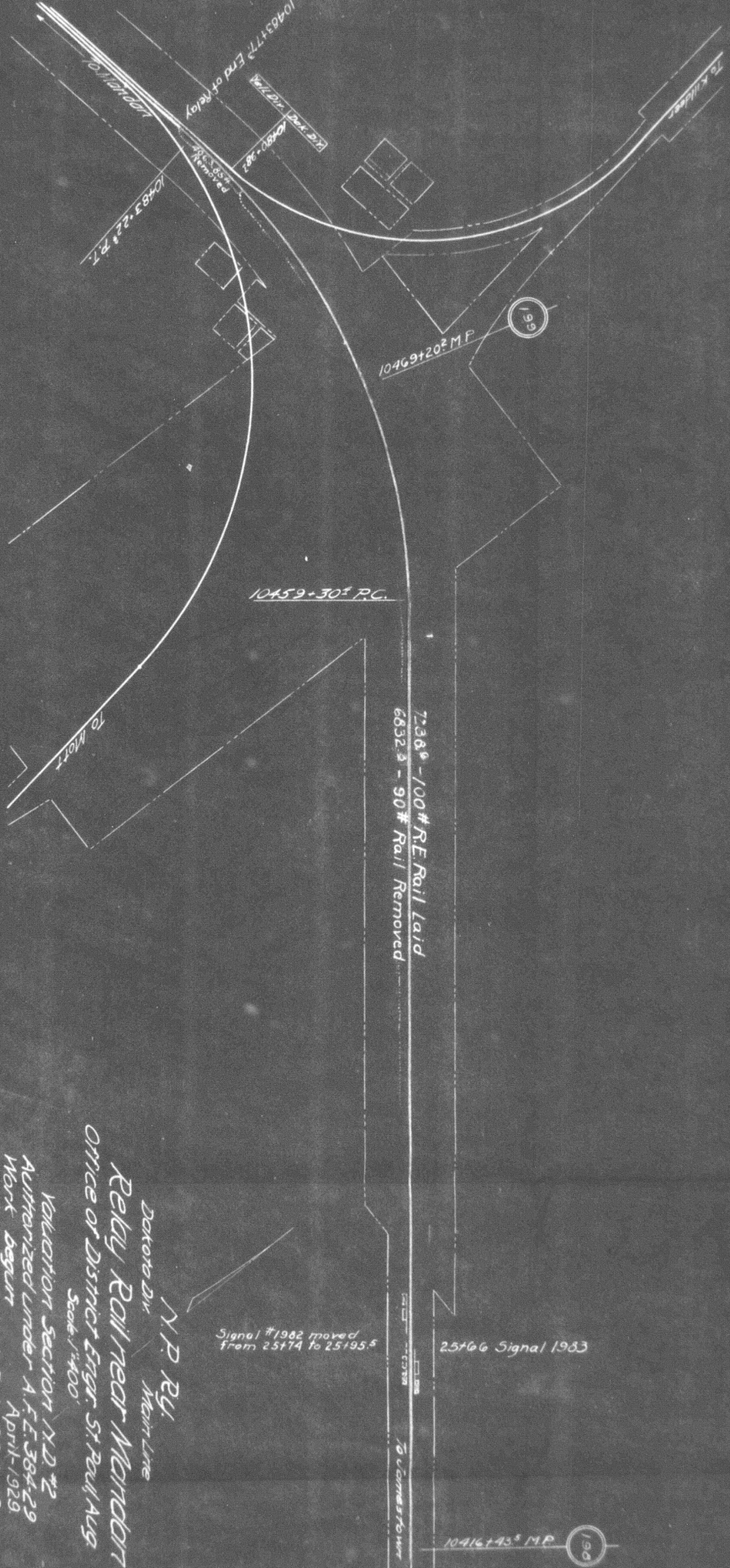
0459+30+ PC

TO ROAD

7175+00 to 56+00  
 6725+00 to 68+00

MIPPY profile  
 Dat of  
 Proposed Relau of 85X90 with  
 100' R.C. Rail / M.P. 19/10/04-109-1447  
 Grade 1:400  
 Office of Dist. Engr. S. Bull / Dec 26 1928  
 Validation Sect. Co. N.S. (N.S.)  
 1900. 1900. shown thus  
 5:10 (see notes)

1041+06 FT. Begin Relay



N.P. Ry.  
 Dakota Div. Main Line  
 Relay Rail near Mandan  
 Office of District Engr. St. Paul, Aug. 1929  
 Scale: 1/4" = 100'

Valuation Section N.D. #2  
 Authorized under A.F.E. 384-29  
 Work begun April-1929  
 Work completed July 20, 1929.  
 New relay shown thus  
 New locations shown thus  
 Removals shown thus

Signal #1962 moved from 25174 to 25195.5

25+66 Signal 1983

10416+43 M.P. 196