



N. P. 1363
6-24

NORTHERN PACIFIC RAILWAY COMPANY
AUTHORITY FOR EXPENDITURE

COMPTROLLER'S COPY

SUPERINTENDENT'S No. 6
No.

1929

DEPT. No.
ENGINEERING DEPT. No. 24-29

YEAR 1929

A. F. E. No. 318

P A S C Div. MAIN LINE

DISTRICT STATE WASH. VAL. SEC. No. 1

AUTHORITY IS REQUESTED FOR A NET EXPENDITURE OF \$ 994.

Accounting distribution as follows: (Distribution to be made in General Office.)

	Operating Expenses	Profit and Loss	Net Operating Expenses	Net Profit and Loss
Cost of property retired	\$	\$	\$	\$
Value of salvage				
Incidental costs			101	
Total to Operating Expenses				\$ 101
Total to Profit and Loss				
To Material and Supplies	Original Cost Additions			
To Bills for Collection	Made in			
To Other Accounts	Retained in records			
Net charge to investment account—Additions and Betterments				893
Total of distribution				\$ 994

Budget reference: Item 407-1929

Class of Work: No. 17

Joint facility contract reference: Non Joint.

The location is on this company's property. To secure rights, it will be necessary

Location: Pasco, Washington

Title: Extension to Office Building Used by Supervisor and Roadmasters.

Reason: When division accounting was inaugurated, in order to provide office room, the Roadmaster and Supervisor were moved into the small building formerly used as an emergency hospital by the N.P.B.A. This building is 24'x24', and is entirely inadequate--it being necessary to house nine people in these offices. These cramped quarters prevent efficient handling of the work in these offices. There is no available building or office space into which these offices can be moved, and in order to provide satisfactory quarters, it is recommended that an extension be provided in accordance with the attached sketch and estimate.

This supersedes and cancels RFA 57 dated July 5th, 1928.
(E.D. 87)

Work to be done by company force under charge of Superintendent

Accounting to concentrate in the office of Division Accountant

Checked and Related President's Office

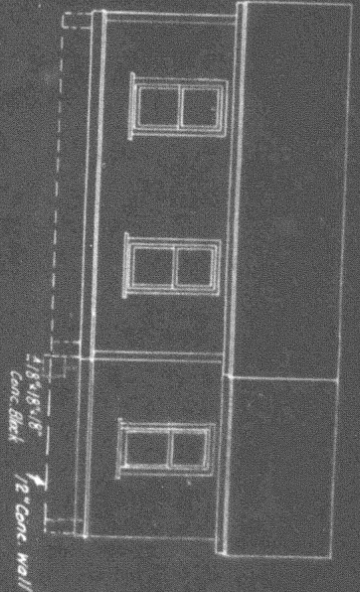
Signature and Title: L. J. Minton, Superintendent Date Jan. 14th 1929

APPROVED: <i>[Signature]</i> General Superintendent	<i>[Signature]</i> Asst. Chief Engr. or Engr. in Charge of Way	<i>[Signature]</i> General Manager
<i>[Signature]</i> Mech. Supt., Supt. Telg. or Signal Engr.	<i>[Signature]</i> Chief Engineer	<i>[Signature]</i> Vice President
<i>[Signature]</i> For Comptroller	<i>[Signature]</i> President	Date of Final Approval { MAR 2 1929 } 19

COMPTROLLER'S RECORD OF NOTICE OF APPROVAL AND OF COMPLETION

Form No. 1345 issued 19 Work begun 19 Work finished 19





For complete Details see plan Office of Chief Engr. (Arch)

Title "Addition to Changes" St Paul Dec. 12, 1928

Roamasters' Supervisors' Office Bldg. PASCO Wn."

NPRY

Pasco Div. 2nd Dist

Prop'd Extn. to Roamasters' building

PASCO

Scale: as noted

Office Dist. Engr. Spokane Wn. 1-9-29

Prop'd Extn. shown thus

Valuation Section Wash. No. 1