



N. P. 1363  
6-24

# NORTHERN PACIFIC RAILWAY COMPANY

COMPTROLLER'S COPY

AUTHORITY FOR EXPENDITURE

1929 1929  
YEAR

SUPERINTENDENT'S No. 169

DEPT. No. 35-1929

ENGINEERING DEPT. No. 211-28

A. F. E. NO. 267

Tacoma

Div.

Yacolt Branch

DISTRICT  
BRANCH

STATE

Wash

VAL. SEC. No.

32

AUTHORITY IS REQUESTED FOR A NET EXPENDITURE OF \$ 1258

Accounting distribution as follows: (Distribution to be made in General Office.)

	Operating Expenses	Profit and Loss	Net Operating Expenses	Net Profit and Loss
Cost of property retired				
Value of salvage				
Incidental costs				
Total to Operating Expenses				18 ✓
Total to Profit and Loss				
To Material and Supplies				
To Bills for Collection				
To Other Accounts				
Net charge to investment account—Additions and Betterments				1240 ✓
Total of distribution				1258 ✓

Original Cost Adjustment  
11-30-1929  
Final

Budget reference: ~~not in budget~~ Item 77-1929

Class of Work: No. 10 ✓

Joint facility contract reference: Non Joint

The location is \_\_\_\_\_ on this company's property. To secure rights, it will be necessary

Location: Lucia

Title: Crossovers to serve Murphy Timber Company

and Track increase <sup>222</sup> 3074 ft.

Reason: The Murphy Timber Company in business at Yacolt for several years are planning on opening up a new logging operation off our Yacolt Branch, and wish to start their track off the rear end of our spur constructed in 1927 to serve the Battleground Lumber Company near Mile Post 22-1/4. The Battleground Lumber Company have completed operations at this point. The Murphy Timber Company expect to build about 10 miles of logging road track, or up to where their timber is. Ground where they figure on connecting with our line is very rough and there is no room for a material yard, so all material for this 10 miles of road will have to be stored at Yacolt and hauled down as needed. They are now building a parallel interchange track, and to properly handle this interchange work it will be necessary to place crossovers between the two tracks. Mr. Murphy is willing to put in the 3 switches in his track providing the Northern Pacific will put in the other 3 switches on Northern Pacific tracks. (Over)

Work to be done by company force under charge of Superintendent

Accounting to concentrate in the office of Division Accountant

Signature and Title

Checked and Entered  
President's Office  
Date Oct 3 1928

APPROVED: <i>[Signature]</i> General Superintendent	<i>[Signature]</i> Asst. Chief Engr. or Engr. Maint. of Way	<i>[Signature]</i> General Manager
<i>[Signature]</i> Mech. Supt., Supt. Telegraph or Signal Engr.	<i>[Signature]</i> Western Traffic Manager	<i>[Signature]</i> Vice President
<i>[Signature]</i> Chief Engineer	<i>[Signature]</i> For Comptroller	Date of Final Approval FEB 21 1929

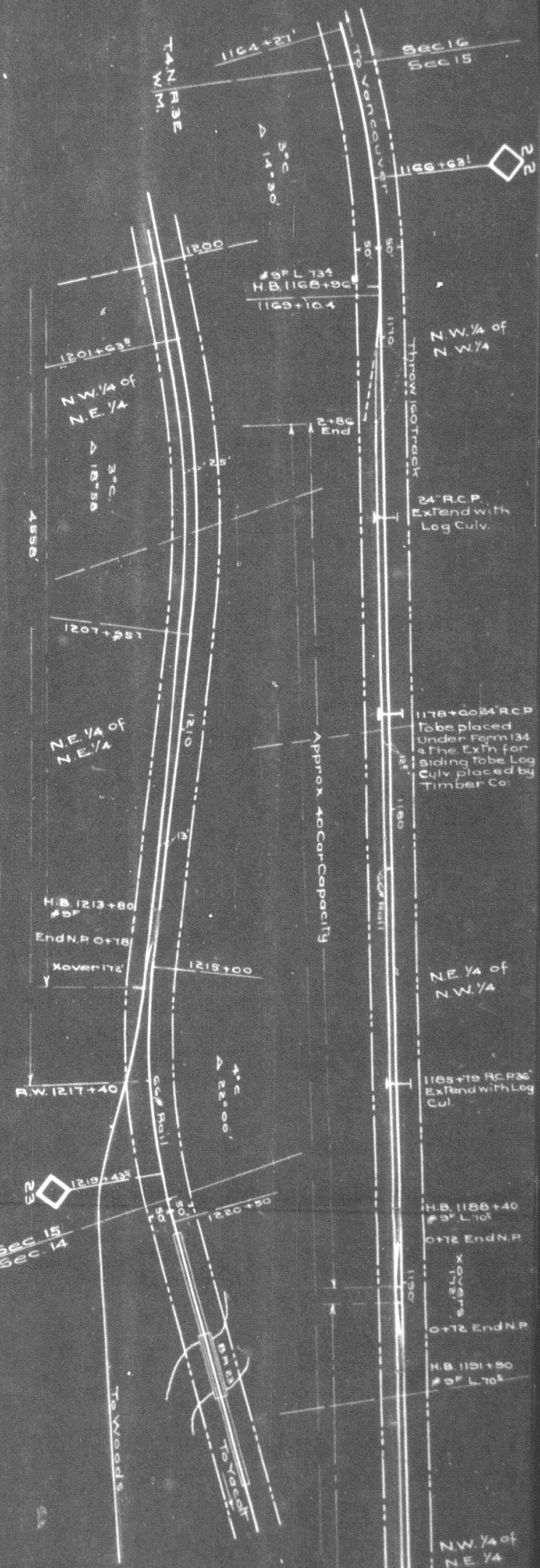
COMPTROLLER'S RECORD OF NOTICE OF APPROVAL AND OF COMPLETION

Form No. 1345 issued \_\_\_\_\_ 19 \_\_\_\_\_ Work begun \_\_\_\_\_ 19 \_\_\_\_\_ Work finished \_\_\_\_\_ 1929

Approved  
N.P. Ry.  
Asst. Chief Engr  
Murphy Timber Co  
By  
T.H.E.

Entire Track built by Murphy Timber Co shown yellow

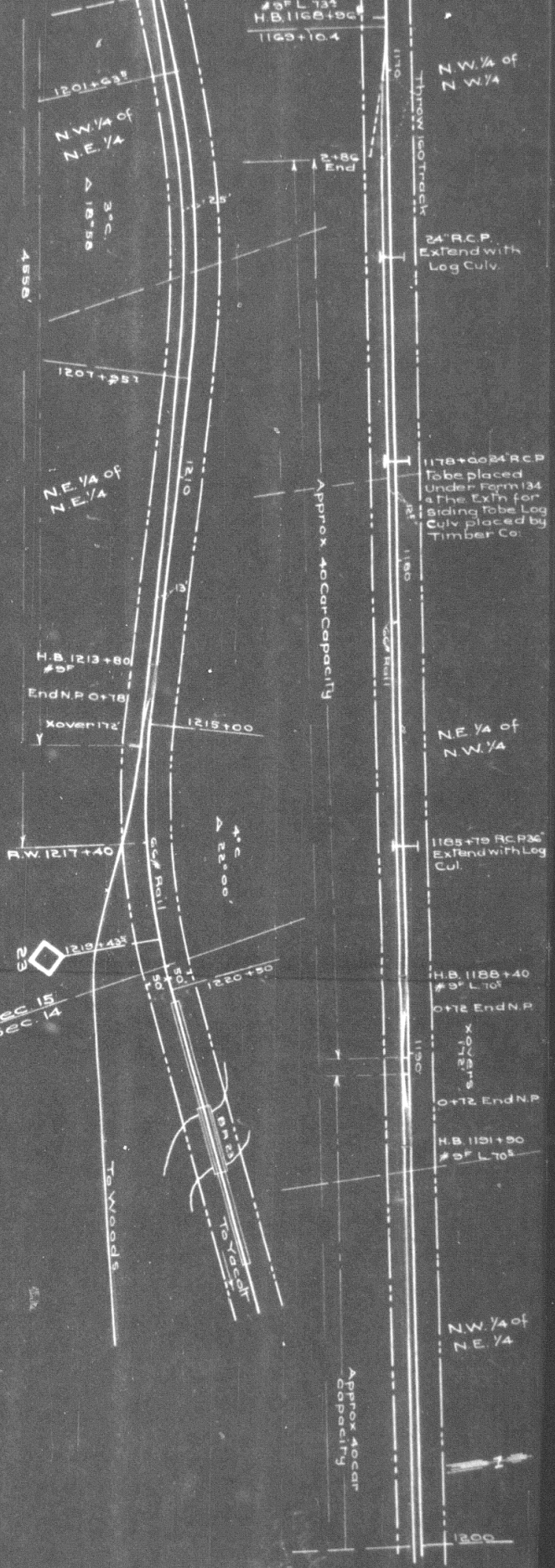
N.P. Ry.  
Tacoma Divn. Jct  
Wash. Val. Sec  
Proposed connec  
Murphy Timber  
Near  
LUCIA, WN  
Office of Dist. Engr  
Scale 1" = 200'



Approved  
 N.P.Ry.  
 Asst. Chief Engr.  
 Murphy Timber Co.  
 By \_\_\_\_\_  
 Title \_\_\_\_\_

Entire track built by Murphy Timber Co. shown yellow.

N.P.Ry.  
 Tacoma Divn. Yacolt Branch  
 Wash. Val. Sec. 32  
 Proposed connections with  
 Murphy Timber Co.  
 Near  
 LUCIA, WN.  
 Office of Dist. Engr. Seattle, Wn.  
 Scale: 1" = 200'



TAN. 33E.  
 15  
 00  
 00  
 00  
 23

To Woods  
 To Yacolt  
 To Yacolt

N.W. 1/4 of  
 N.E. 1/4

