

N. P. 1363
6-34

NORTHERN PACIFIC RAILWAY COMPANY
1929
AUTHORITY FOR EXPENDITURE

YEAR 1929

SUPERINTENDENT'S NO. 24
No.

DEPT. NO.
ENGINEERING DEPT. NO. 29

A. F. E. No. 260

Montana Div. Ruby Valley

DISTRICT STATE Montana VAL. SEC. No. 13
BRANCH

AUTHORITY IS REQUESTED FOR A NET EXPENDITURE OF \$ 2266.00

Accounting distribution as follows: (Distribution to be made in General Office.)

	Operating Expenses	Profit and Loss	Net Operating Expenses	Net Profit and Loss
Cost of property retired	1406		455	
Value of salvage	951		564	
Incidental costs				
Total to Operating Expenses				1019 ✓
Total to Profit and Loss				951 ✓
To Material and Supplies				
To Bills for Collection				1247 ✓
To Other Accounts				3217 ✓
Net charge to investment account—Additions and Betterments				
Total of distribution				3 ✓

Budget reference:

Item 82

Joint facility contract reference: Not Joint.

The location is ----- on this company's property. To secure rights, it will be necessary

Location: Between Whitehall & Milwaukee Ry. King.

Title: Relay light Rail with 2/90# Rail HP 0 plus 722 to 0 plus 1651.7,
and east leg of wye.

Reason:

Rail in track at this point is 3/56#, 3/66# and 3/72# rail and is wearing fast and on account of using heavy power in this territory when detouring passenger trains, rail should be relaid with 2/90# rail during the coming season.

It is therefore recommended that work be done as per attached blue print and estimate.

See AFE #23.

Work to be done by company force under charge of Superintendent.

Accounting to concentrate in the office of Superintendent.

Signature and Title: *J. H. ...* Superintendent. Date Dec. 18th 1928

APPROVED: *[Signature]* General Superintendent.

[Signature] Asst. Chief Engr. or Supv. General Office.

[Signature] General Manager.

[Signature] Chief Engineer.

[Signature] Vice President.

[Signature] For Comptroller.

[Signature] President.

Date of Final Approval FEB 21 1929

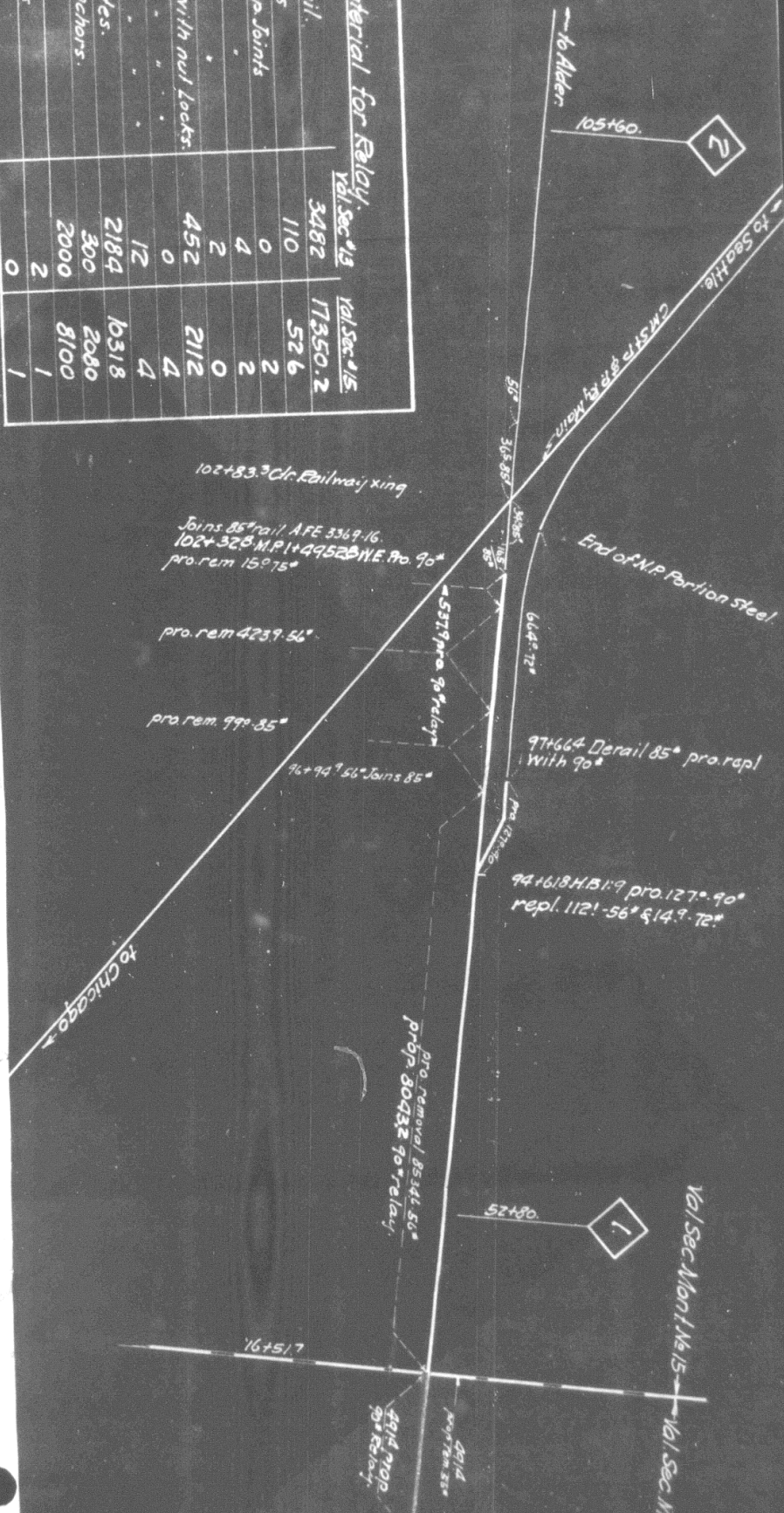
COMPTROLLER'S RECORD OF NOTICE OF APPROVAL AND OF COMPLETION

May 4 1929

19



Material for Relay		
	Val. Sec. #13	Val. Sec. #15
Lin. ft. 90° Relay rail	3482	17350.2
Pcs. 90° Angle Bars	110	526
Pcs. 90° x 85° Comp. Joints	0	2
Pcs. 90° x 72° "	4	2
Pcs. 90° x 56° "	2	0
Pcs. 90° Balls with nut Locks	452	2112
Pcs. 85° "	0	4
Pcs. 7 1/2" x 50° "	12	4
Pcs. 90° Tie Plates	2184	10318
Pcs. 90° Rail Anchors	300	2000
Lbs. Spikes	2000	8100
No. 9° Turnouts	2	1
No. 9° De Rails	0	1



102+83.3 Cl. Railway xing

Joins 85° rail AFE 5369-16.
102+328 M.P. 1+49528 N.E. Pro. 90°
pro. rem 15075°

pro. rem 4239-56°

pro. rem 999-85°

96+94 9° 56° Joins 85°

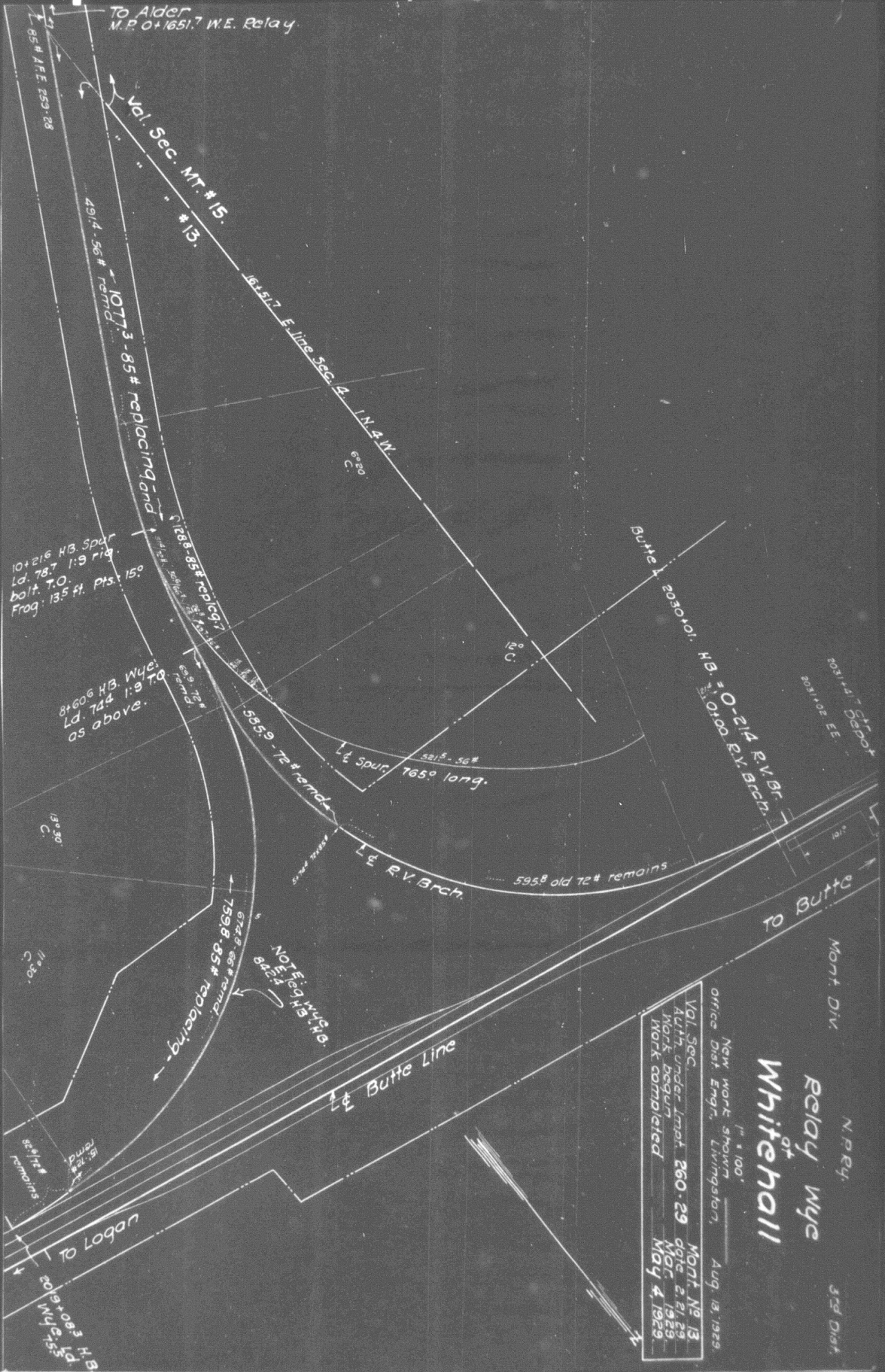
End of N.P. Portion Steel

97+664 Derail 85° pro. repl.
with 90°

94+618 H.B. 1:9 pro. 127° 90°
repl. 112° 56° & 14° 72°

pro. removal 85.34' 80°
repl. 80.932 90° relay

Val. Sec. Mon. No. 15
Val. Sec. M.



To Alder
M.P. 0+1651.7 W.E. Relay

Vol. Sec. Mt. # 15.
13.

85# A.F.E. 253.28

10+216 H.B. Spur
Ld. 78.7 1:9 rig.
bolt. T.O.
Frog: 13.5 ft. Pts: 15°

8+606 H.B. Wye
Ld. 74.4 1:9 TO
as above.

16+517 E. line 56c. A
1 N. & W.
6°30' C.

1073-85 # replacing and

1588-85 # replacing and

588-72 # remains
Ld spur 521°-56°
765° long.

13° 30' C.

L.E. R.V. Arch.

595° old 72 # remains

759.8-85 # replacing
674.9-86 # cmd.
8424 #
NOTE: 6-9-35 H.B. 8424 #

L.E. Butte Line

To Butte

To Logon

B.H. 580+60
10+517 M

Vol. Sec.
Auth. under Impat. 260-29
Work begun MAR. 2, 1929
Work completed May 4, 1929

Office Dist. Engr. Livingston, Aug. 13, 1929

Relay Wye
of
Whitehall

Mont. Div. N.P.R.Y. 3rd Dist.

1" = 100'