



N. P. 1363  
6-24

NORTHERN PACIFIC RAILWAY COMPANY 1929  
AUTHORITY FOR EXPENDITURE

YEAR 1928

SUPERINTENDENT'S No. 108

DEPT. No.

ENGINEERING DEPT. No. 14-29

A. F. E. NO. 4, 248

P A S C O Div. SECOND SUBDIVN.

DISTRICT STATE WASH. VAL. SEC. No. 2  
BRANCH

AUTHORITY IS REQUESTED FOR A NET EXPENDITURE OF \$ 257.

Accounting distribution as follows: (Distribution to be made in General Office.)

	Operating Expenses	Profit and Loss	Net Operating Expenses	Net Profit and Loss
Cost of property retired	\$	\$	\$	\$
Value of salvage				
Incidental costs				
Total to Operating Expenses				\$
Total to Profit and Loss				
To Material and Supplies				
To Bills for Collection				
To Other Accounts				
Net charge to investment account—Additions and Betterments				257 ✓
Total of distribution				257 ✓

Budget reference: *Item 407-1929*

Class of Work: No. 17 ✓

Joint facility contract reference: **Non Joint.**

The location is on this company's property. To secure rights, it will be necessary

Location: **Holmes, Spur, Washington**

Title: **Stock Yard Improvements.**

and

Reason: For a number of years we have maintained a makeshift yard at Holmes Spur, where stock could be loaded or unloaded. The Carstens Packing Company, of Tacoma, handle a number of cars each season to or from this point, and have for some time urged upon us to provide satisfactory facilities, such shipments being augmented occasionally by individual shipments from farmers in that vicinity. This is territory competitive with the CMStP&P and unless proper facilities are provided, it will mean that stock feeding in this vicinity will be driven into Ellensburg for shipment. The matter has been given careful consideration by the Traffic Department who have recommended the improvement. The work should be authorized in accordance with the attached sketch and estimate, making necessary deviation from our standard plan to conform to the ground available for the location. The number of shipments handled during the past three years are as follows:

1926	-	35	cars
1927	-	16	"
1928	-	44	"

Work to be done by company force under charge of Superintendent

Accounting to concentrate in the office of **Division Accountant**

Checked and Entered  
President's Office

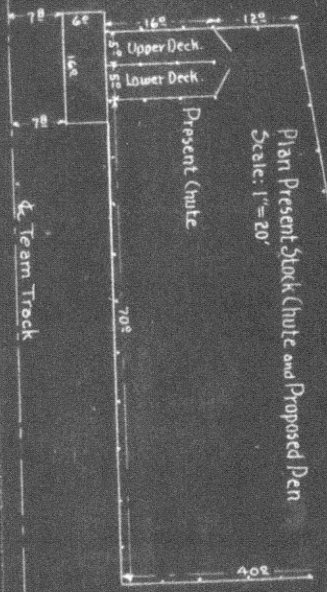
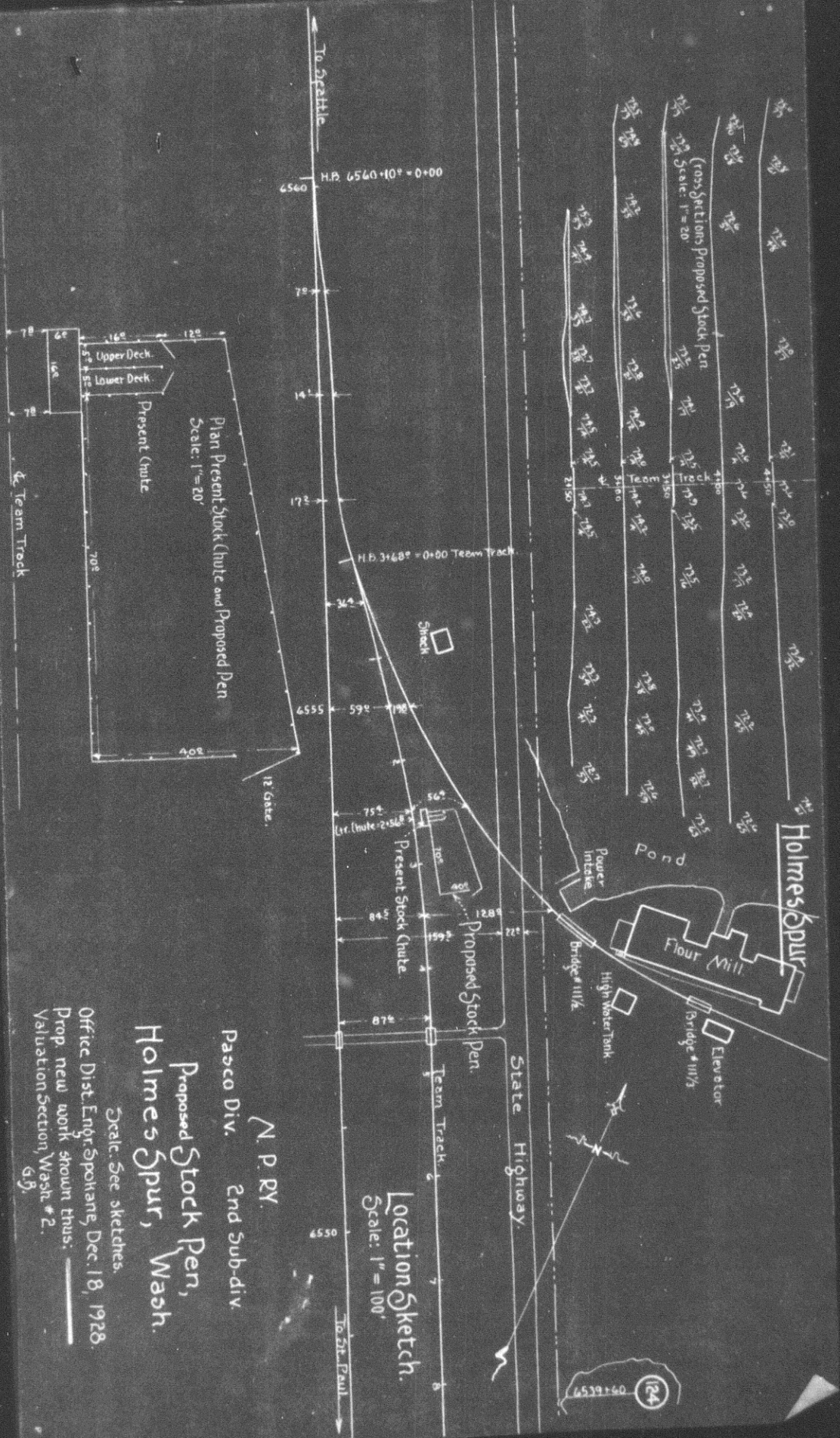
Signature and Title: *L. H. Weston* Superintendent Date **Dec. 27th 1928**

APPROVED: <i>J. C. Weaver</i> General Superintendent.	<i>[Signature]</i> Asst. Chief Engr. or Engr. Maint. of Wry.	<i>[Signature]</i> General Manager.
<i>[Signature]</i> Mech. Supt., Supt. Teigh. or Signal Eng.	<i>[Signature]</i> Western Traffic Manager	
<i>[Signature]</i> Chief Engineer.	<i>[Signature]</i> GENERAL TRAFFIC MANAGER	<i>[Signature]</i> Vice President
<i>[Signature]</i> For Comptroller.	<i>[Signature]</i> President	Date of Final Approval: <b>FEB 20 1929</b>

COMPTROLLER'S RECORD OF NOTICE OF APPROVAL AND OF COMPLETION

Form No. 1345 issued 19 Work begun 19 Work finished *6-5* 19





Location Sketch.  
Scale: 1" = 100'

N. P. Ry.  
Pasco Div. 2nd Sub-div.  
Proposed Stock Pen,  
Holmes Spur, Wash.  
Credit: See sketches.  
Office Dist. Engr. Spokane, Dec. 18, 1928.  
Prop. new work shown thus: —  
Valuation Section, Wash. # 2.  
G.P.