



N. P. 1363
6-24

NORTHERN PACIFIC RAILWAY COMPANY
AUTHORITY FOR EXPENDITURE

COMPTROLLER'S COPY

YEAR 1929

SUPERINTENDENT'S No. 129

1929

DEPT. No. 32-1729
ENGINEERING DEPT. No. 100

A. F. E. No. 246

Lake Superior DISTRICT IV. Duluth Terminals BRANCH STATE Minnesota. VAL. SEC. No. 1.

AUTHORITY IS REQUESTED FOR A NET EXPENDITURE OF (\$243.00)

Accounting distribution as follows: (Distribution to be made in General Office.)

	Operating Expenses	Profit and Loss	Net Operating Expenses	Net Profit and Loss
Cost of property retired	913			
Value of salvage	528		385	
Incidental costs			285	
Total to Operating Expenses				670
Total to Profit and Loss	619			670
To Material and Supplies				528 ✓
To Bills for Collection				1986 ✓
To Other Accounts				(913) ✓
Net charge to investment account—Additions and Betterments				2271 ✓
Total of distribution				2271 ✓

Original Cost Adjustment
Made in 5-18-1931
Final

Budget reference: Not in Budget

Class of Work: No. 10 ✓

Joint facility contract reference: Joint with CMStP&P RR., Contract, October 1, 1928.

The location is --- Added to valuation on this company's property. To secure rights, it will be necessary

Location: DULUTH-
Title: TRACK CHANGES FOR (PREST-O-LITE COMPANY-)
and

Reason: The Prest-O-Lite Company which is consolidated with the Lindie Air Products Company and who own the property from 38th Avenue West to 39th Avenue West on South side of Main Line, requested track changes be made and an addition be put in as covered by estimate and blue prints attached, to serve building being erected by them at 39th Avenue West, they to pay the expenses of change. They have deposited the sum of \$2000.00, which has been remitted to the Treasurer and will execute Industrial Track Agreement Form 802, which has been sent to them for that purpose. The work of rearranging the tracks has already been started and this improvement is to secure necessary authority for accounting purposes.

Bill 18509-30
See file 776
Statement 5/17/29 from
Lindie Air Products Co.

Work to be done by company force under charge of contract Superintendent.

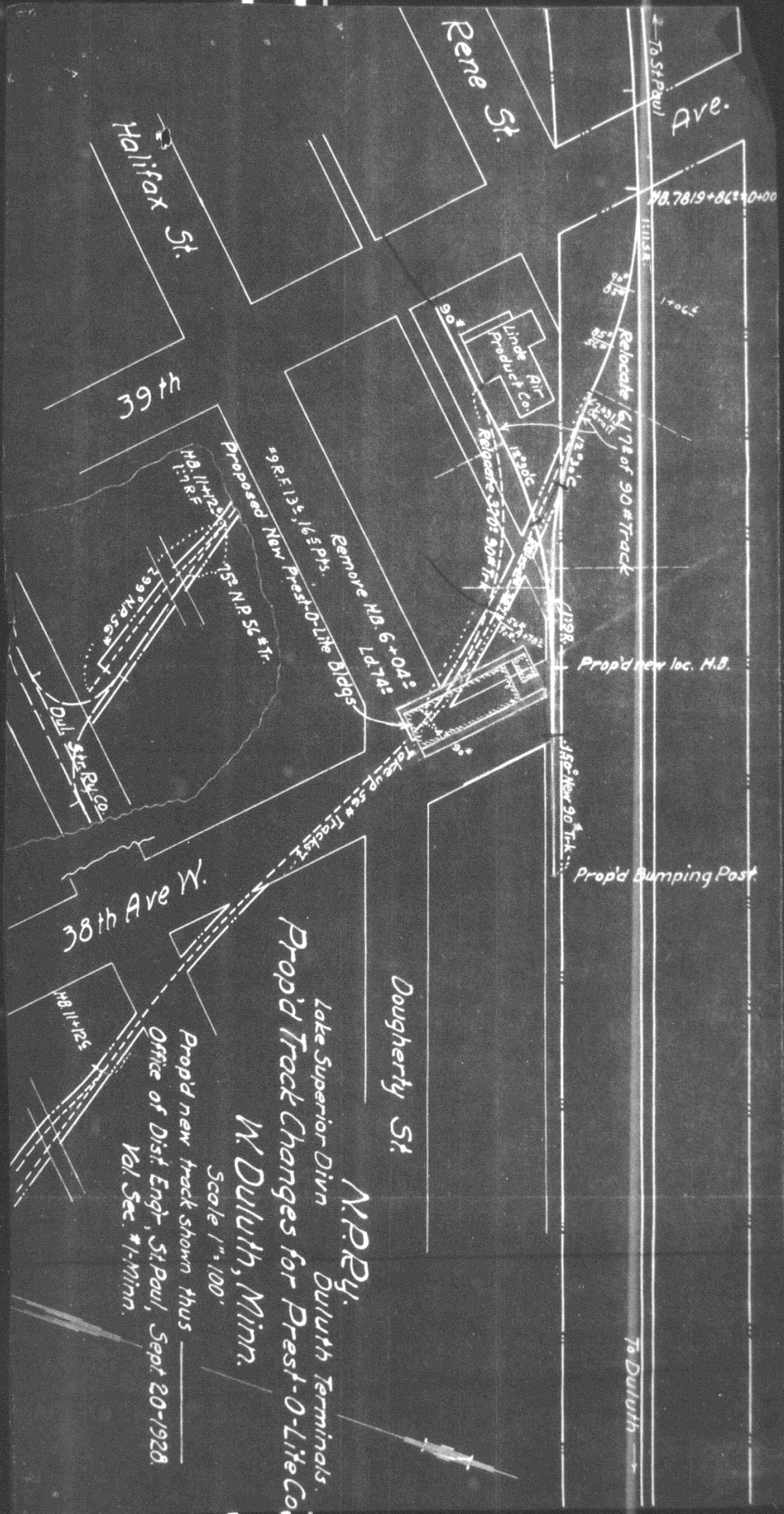
Accounting to concentrate in the office of Superintendent.

Signature and Title: H. Jacobson Superintendent. Date 10-10 1928

APPROVED H. H. Strackman General Superintendent.	J. W. Clark Asst. Chief Engr. or Engr. in Charge of Work.	H. E. Voss General Manager.
Mech. Supt., Supt. Telegraph or Signal Engr. Bernard Blum Chief Engineer.	R. W. Clark Chief Engineer.	H. E. Voss Vice President.
For Comptroller. Charles Sweeney	President.	Date of Final Approval { FEB 20 1929

COMPTROLLER'S RECORD OF NOTICE OF APPROVAL AND OF COMPLETION

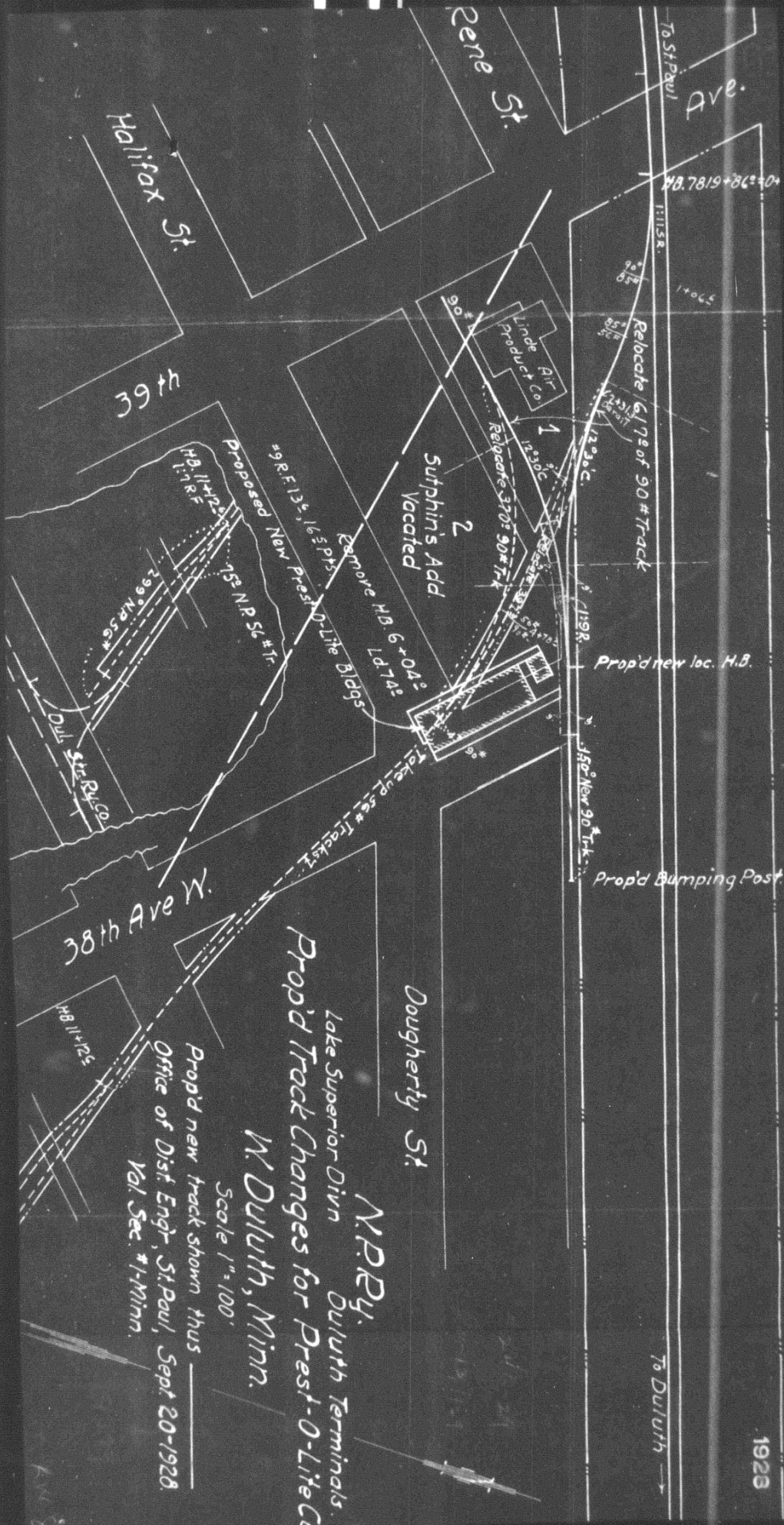
19 Work begun 19 Work finished Feb. 13 1929



N.P.Ry.
 Duluth Terminals.
 Proposed Track Changes for Prest-O-Lite Co
 W. Duluth, Minn.
 Scale 1"=100'
 Proposed new track shown thus ———
 Office of Dist. Engr., St. Paul, Sept. 20-1920.
 Vol. Sec. #1-Minn.

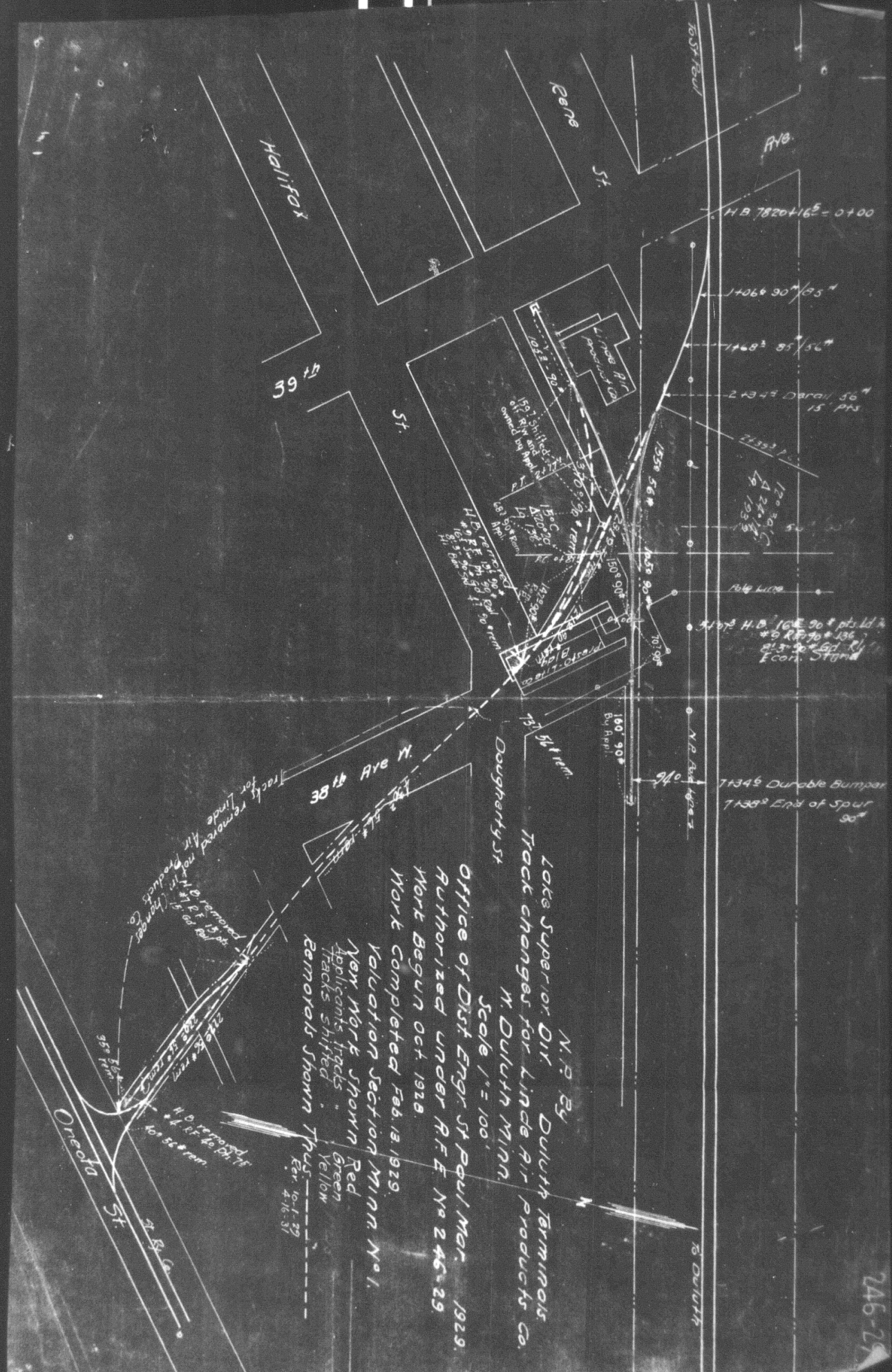
Dougherty St.

To Duluth



N.P.Ry.
 Duluth Terminals.
 Proposed Track Changes for
 Prest-O-Lite Co.
 W. Duluth, Minn.
 Scale 1"=100'
 Proposed new track shown thus ———
 Office of Dist. Engr., St. Paul, Sept. 20-1928.
 Vol. Sec. #1-Minn.

W47
 1923



H.B. 7820+165 = 0+00

1+066 90°/35'

1+468 85°/56'

2+349 Durable 56' 15' PPS

2+353 15'

(20' 30')
 19 22 1/2'
 19 12 3/8'

5+197 H.D. 106' 90° + pts. 1st R.
 + 5 R.F. 70° + 136'
 213' 90° Ed. R.
 Econ. Stand

7+345 Double Bumper
 7+388 End of Spur
 90'

246-29