



N. P. 1363  
6-24

# NORTHERN PACIFIC RAILWAY COMPANY

## AUTHORITY FOR EXPENDITURE

1929  
YEAR

SUPERINTENDENT'S NO. 4

DEPT. NO.

A. F. E. NO. 240

No.

ENGINEERING DEPT. NO. 25-29

Seattle Div. Snoqualmie

DISTRICT STATE Wash  
BRANCH

VAL. SEC. NO. 25

AUTHORITY IS REQUESTED FOR A NET EXPENDITURE OF \$ 479

Accounting distribution as follows: (Distribution to be made in General Office.)

	Operating Expenses	Profit and Loss	Net Operating Expenses	Net Profit and Loss
Cost of property retired.....	\$	\$	\$	\$
Value of salvage .....				
Incidental costs .....				
Total to Operating Expenses .....				
Total to Profit and Loss .....				
To Material and Supplies .....				
To Bills for Collection .....				
To Other Accounts .....				479 ✓
Net charge to investment account—Additions and Betterments.....				479 ✓
Total of distribution .....				

Budget reference: NOT IN BUDGET.

Class of Work: No. 1

Joint facility contract reference: Non joint.

The location is on this company's property. To secure rights, it will be necessary

Location: Monohon, Washington (near)

Title: Additional riprap at old bridge #13

and

Reason: During the high water of 1927 it was necessary to place 110 cu.yds additional riprap along the bank at the East end of old bridge No.13, which was filled under AFE 829-27. This was emergency work necessary to protect the bank and this R.F.A. is submitted for record purposes to cover work already done.

COMPLETED.

Work done by company force under charge of Divn. Superintendent at Seattle, Wn.

Accounting to concentrate in the office of Divn. Accountant at Seattle, Wn.

Checked and Entered  
President's Office

Supt. Date Jan. 4 1929

Signature and Title:

J.R. Baile

APPROVED:

*[Signature]*  
General Superintendent.

*[Signature]*  
Ass'y. Chief Engr. or Engr. Maint. of Way.

*[Signature]*  
General Manager.

Mech. Supt., Supt. Telg. or Signal Engr.

*[Signature]*  
Chief Engineer.

*[Signature]*  
Vice President.

*[Signature]* Charles Soume  
For Comptroller. President.

Date of Final Approval { FEB 15 1929 }

COMPTROLLER'S RECORD OF NOTICE OF APPROVAL AND OF COMPLETION

Form No. 1345 Issued

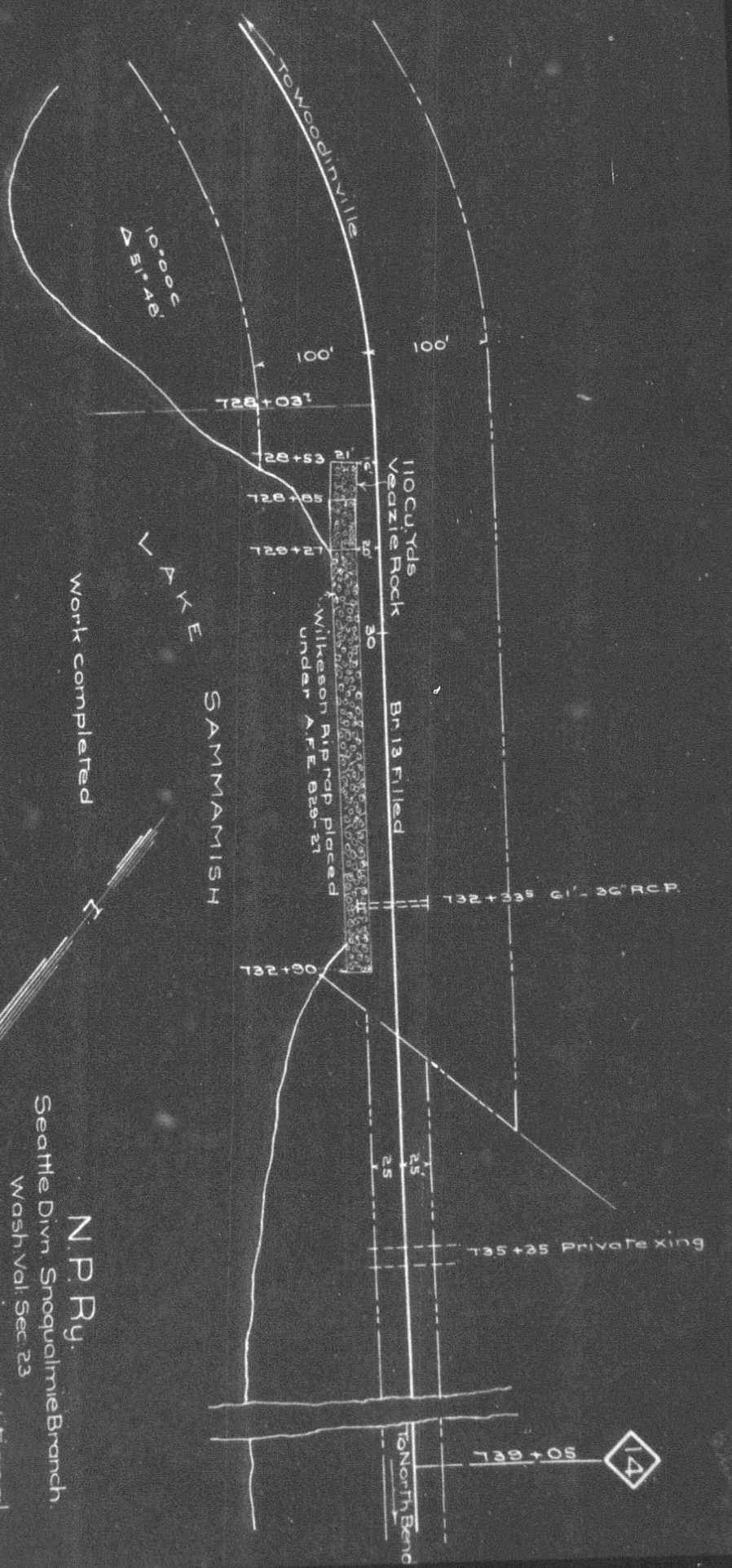
19

Work begun

19

Work finished

Jan. 31 1929



**N.P.Ry.**  
 Seattle Divn. Snoqualmie Branch.  
 Wash. Vol. Sec. 23  
 Sketch showing Additional  
 Rip-rap placed at Bridge #13  
 of  
**MONOHON. WN.**  
 Office of Dist. Engr.  
 Seattle Wn.  
 Dec. 31 1928  
 Scale 1"=100'