



N. P. 1363
6-24

NORTHERN PACIFIC RAILWAY COMPANY AUTHORITY FOR EXPENDITURE

COMPTROLLER'S COPY

SUPERINTENDENT'S NO. 209
NO.

1929

DEPT. NO.
ENGINEERING DEPT. NO. 12

1929
YEAR

A. F. E. NO. 218

Fargo Div. Red River

DICKENS BRANCH STATE Minn.

VAL. SEC. NO. 15

AUTHORITY IS REQUESTED FOR A NET EXPENDITURE OF \$186.00
(Distribution to be made in General Office.)

| Accounting distribution as follows: | Operating Expenses | Profit and Loss | Net Operating Expenses | Net Profit and Loss |
|--|--------------------|-----------------|------------------------|---------------------|
| Cost of property retired | | | | |
| Value of salvage | | 4339 | | |
| Incidental costs | | 465 | | |
| Total to Operating Expenses | | | 60 | 3874 |
| Total to Profit and Loss | | | | 220 |
| To Material and Supplies | | | | 60 |
| To Bills for Collection | | | | 409 |
| To Other Accounts | | | | 465 |
| Net charge to investment account—Additions and Betterments | | | | (3968) |
| Total of distribution | | | | 651 |

Original Cost Adjustment
Made in 10-17-1929
Final

Budget reference: Not in Budget

Joint facility contract reference: Not Joint

Class of Works No. 20

The location is _____ on this company's property. To secure rights, it will be necessary to do nothing.

Location: Twin Valley, Minnesota.
Title: Abandon and Remove Water Station Facilities.
and
Reasons: As it is no longer necessary to maintain water station at Twin Valley, the tank, spout, pump, gas engine, etc., should be removed in order to make available at other points where needed. The frame pump house is to be moved to Freeman for use as coal shed.

Work to be done by company force under charge of _____ Superintendent.

Accounting to concentrate in the office of _____ Division Accountant.

Checked and Extended
President's Office



Signature and Title:

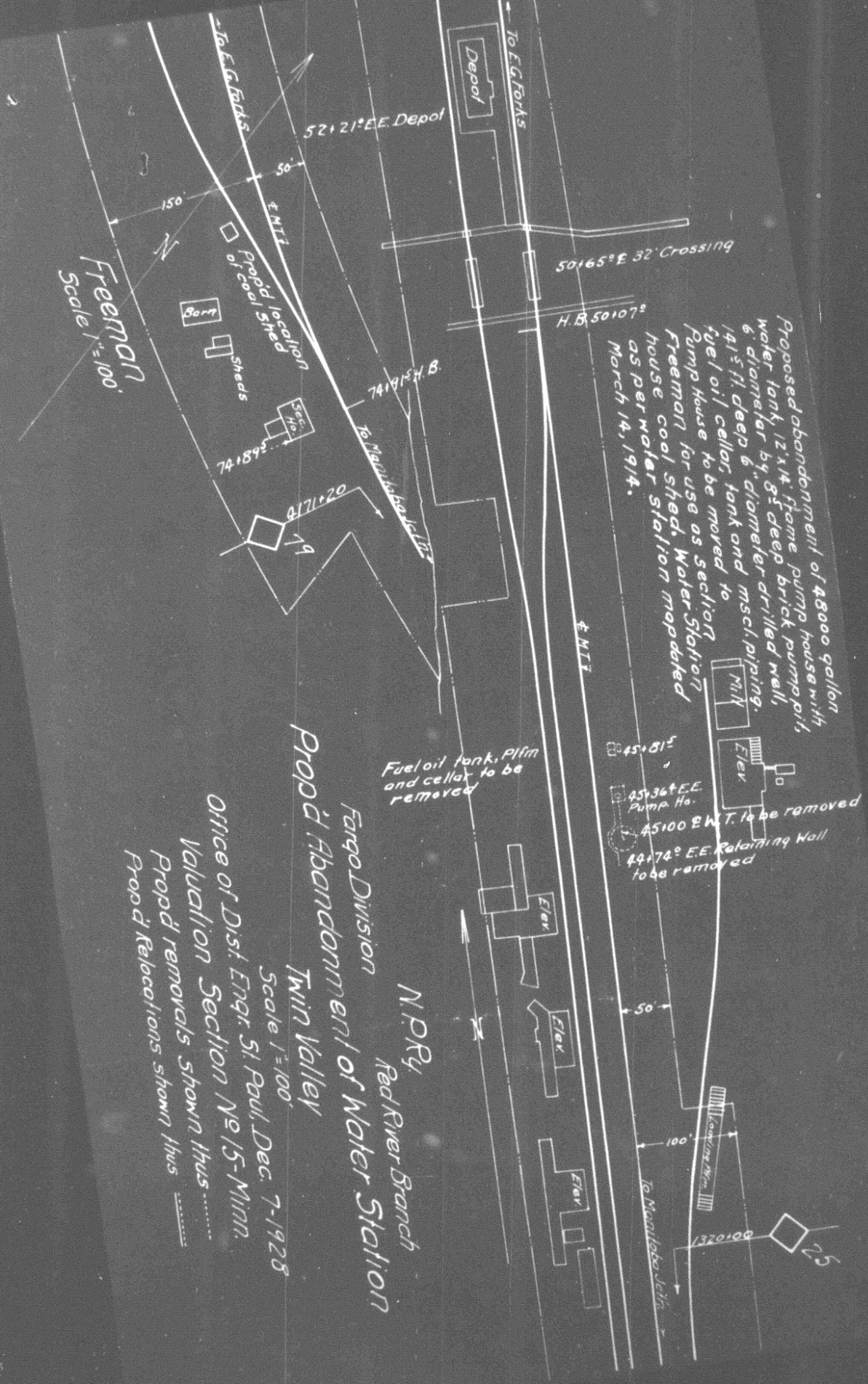
| | | |
|---|---|--|
| APPROVED <i>W. H. Stearns</i> General Superintendent. | <i>W. H. Stearns</i> Supt. | Date Dec. 19 1928 |
| <i>W. H. Stearns</i> Chief Engineer. | <i>W. H. Stearns</i> Asst. Chief Engr. or Engr. in Charge of Work. | <i>W. H. Stearns</i> General Manager. |
| <i>W. H. Stearns</i> Mech. Supt., Supt. Tel. or Signal Engr. | <i>W. H. Stearns</i> Vice President. | |
| <i>W. H. Stearns</i> For Comptroller. | <i>W. H. Stearns</i> President. | Date of Final Approval { FEB 5 1929 |

Form No. 1346 issued

COMPTROLLER'S RECORD OF NOTICE OF APPROVAL AND OF COMPLETION

19 _____ Work begun 19 _____ Work finished April 2 1929

Freeman
Scale 1" = 100'



Proposed abandonment of 48000 gallon water tank 12' x 14' flume pump house with 6" diameter by 8' deep brick pump pit, 141' ft. deep 6" diameter drilled well, fuel oil cellar, tank and misc. piping. Pump house for use as section Freeman house cool shed. Water Station as per water station mapped March 14, 1914.

N.P.R.
Red River Branch
Fargo Division
Prop'd Abandonment of Water Station
Twin Valley
Scale 1" = 100'
Office of Dist. Engr. S. Paul, Dec. 7-1928
Valuation Section No 15-Minn.
Prop'd removals shown thus
Prop'd Relocations shown thus