

N. P. 1363  
6-24

# NORTHERN PACIFIC RAILWAY COMPANY AUTHORITY FOR EXPENDITURE

COMPTROLLER'S COPY  
1929  
YEAR 1929

SUPERINTENDENT'S NO.  
HFB No. 17

DEPT. No. 33-1929  
ENGINEERING DEPT. No. 217

A. F. E. NO. 217

Fargo Div. Red River

DISTRICT STATE N D  
BRANCH

AUTHORITY IS REQUESTED FOR A NET EXPENDITURE OF \$ 60315  
Accounting distribution as follows: (Distribution to be made in General Office.)

VAL. SEC. No. 3

Cost of property retired	Operating Expenses	Profit and Loss	Net Operating Expenses	Net Profit and Loss
Value of salvage	9170			
Incidental costs	815			
Total to Operating Expenses			8355	
Total to Profit and Loss				1183
To Material and Supplies				
To Bills for Collection				9538 ✓
To Other Accounts	A/C 705			815 ✓
Net charge to investment account—Additions and Betterments				56300 ✓
Total of distribution				5523 ✓
				\$ 61130 ✓

Original Cost Adjustment  
Made in 1931  
*James*

Budget reference: Not in Budget

Joint facility contract reference: Not Joint

The location is \_\_\_\_\_ on this company's property. To secure rights, it will be necessary to do nothing.  
Location: Grand Forks, North Dakota

Title: Construct grocery warehouse and office building for the  
and Nash Finch Company

Reason: Under lease No 45795 the Nash Finch Company is to construct a warehouse and office building on NP property at Grand Forks that is occupied by the NP freight house and the NP Ry is to reimburse them for the cost of construction. This RFA is drawn to cover the removal of the old freight house, the cost of the new building and the necessary rearrangement of tracks and platforms in connection therewith. It is also proposed to replace the worn out sandstone block driveway with concrete paving in order to serve the new building and the team tracks.

This work is complete except for a portion of the track changes and the construction of the concrete driveway.

Work to be done by company force under charge of *Engineering Dept. Department* *HAC*  
and contract

Accounting to concentrate in the office of *Division Accountant, Engineering Dept*  
Signature and Title: *H.F. Brown* District Engineer

APPROVED: *W.H. Stricker* General Superintendent. Date *Dec. 15, 1928*

<i>W.H. Stricker</i> General Superintendent.	<i>R.W. Cook</i> Asst. Chief Engr. or Engr. Maint. of Wry.	<i>J. Klantky</i> General Manager.
<i>Benjamin Blum</i> Chief Engineer.	<i>Charles Donnelly</i> Vice President.	
<i>W.H. Stricker</i> Gen. Comptroller.	<i>W.H. Stricker</i> President.	

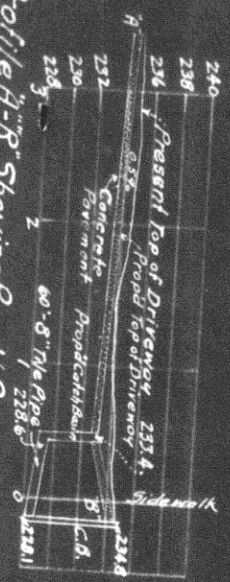
Date of Final Approval: FEB 5 1929

Form No. 1345 issued

COMPTROLLER'S RECORD OF NOTICE OF APPROVAL AND OF COMPLETION

Work begun \_\_\_\_\_ 19 \_\_\_\_\_  
Work finished \_\_\_\_\_ 19 \_\_\_\_\_

Profile A-B Showing Prop'd Regrading & Raving of Driveway  
 Scale: Hor. 1" = 100'  
 Vert. 1" = 10'



Second Ave. N.

Third

85° of track to be thrown  
 Pres. end of Spur  
 #7-R-56 Turnout  
 Ld. 55' removed  
 to PHS.

Line up King plank  
 & extend from 24'  
 width to 32'

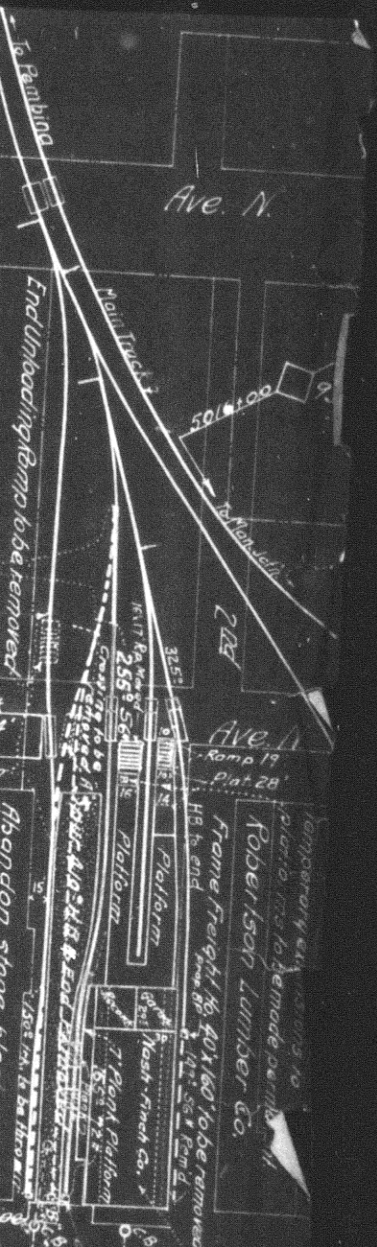
160° of track to be thrown  
 Abandon stone block paving  
 now, partly removed, regrade  
 driveway and place concrete  
 pavement between tracks.  
 Place 16' plank across  
 track in front of 2 Nash  
 Street warehouse doors.  
 Increase trucking space  
 between #1 and #2 tracks.

Prop'd catch basin 60' 8" Tile Pipe  
 City Sewer Brick 58' x 75"

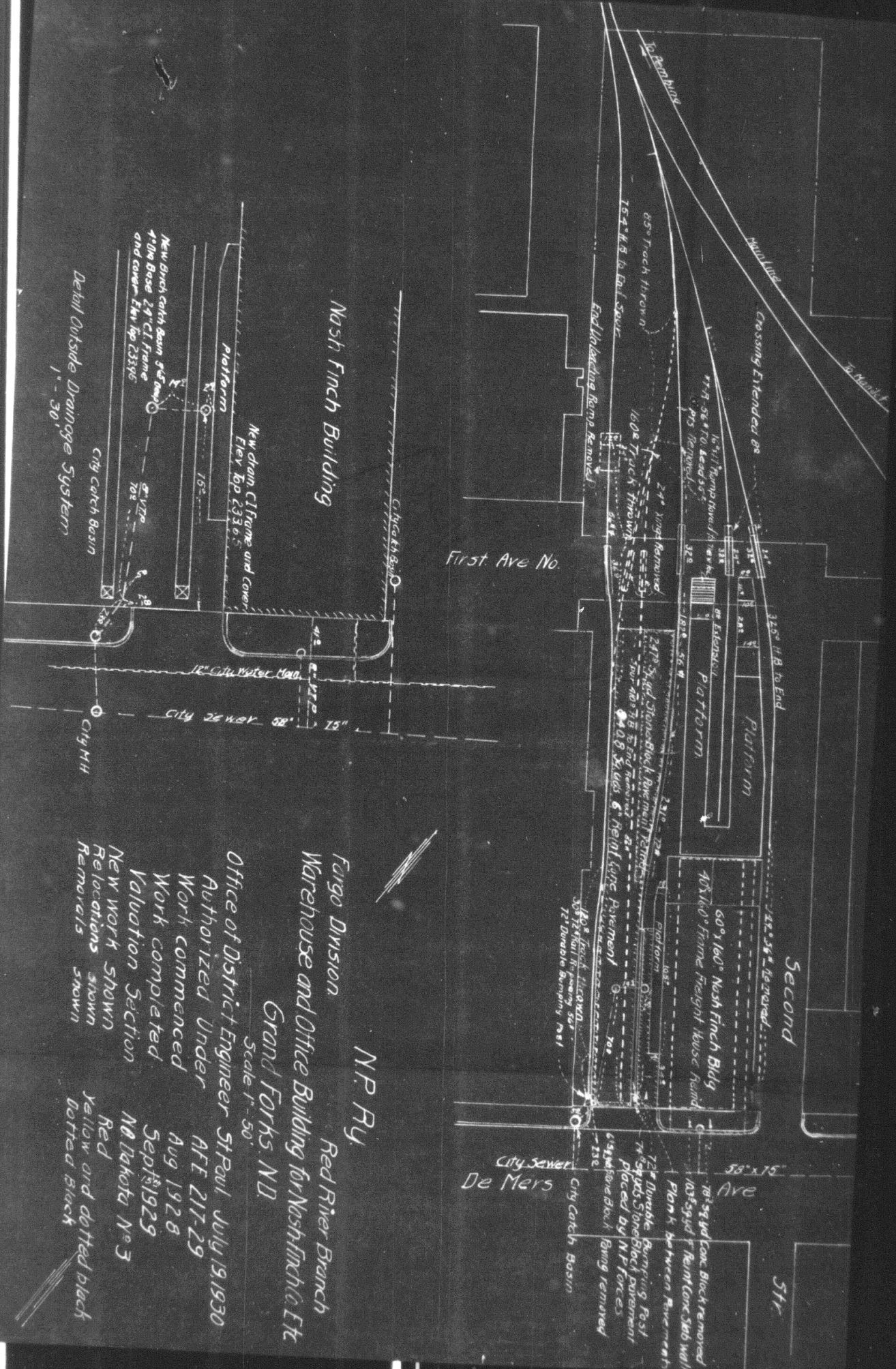
De Mers Pavement Ave.

Str.

Note: This sketch does not include  
 temporary freight office nor temporary  
 canopy over north platform, these  
 facilities are to be removed upon  
 completion of combination depot



Forge Division  
 Prop'd Abandonment of Freight House, Capitalize  
 Nash Finch Bldg, Track Changes, Paving, etc.  
 Grand Forks  
 Scale 1" = 100'  
 Office of Dist. Engr. St. Paul, Nov. 28/1928  
 Valuation Section No 3-N. Dak.  
 Relocations  
 Removals



Nash Finch Building

First Ave No

Second

5th

Fargo Division  
 Warehouse and Office Building for Nash Finch & Et  
 Grand Forks, ND  
 N.P. Ry.  
 Red River Branch

Office of District Engineer St Paul July 19, 1930  
 Authorized Under AFE 217-29  
 Work commenced Aug 1928  
 Work completed Sept 1929  
 Valuation Section  
 New work shown  
 Relocations shown  
 Removals shown

Red  
 Yellow and dotted black  
 Dotted black

Scale 1" = 50'

Detail Outside Drainage System  
 1" = 30'