



N. P. 1363
6-24

NORTHERN PACIFIC RAILWAY COMPANY

AUTHORITY FOR EXPENDITURE

1929 YEAR 1929

SUPERINTENDENT'S No. 6
No. 6

DEPT. No.
ENGINEERING DEPT. No. 19-29

A. F. E. NO. 215

Tacoma

Div. Main Line

DISTRICT STATE Wash
BRANCH

VAL. SEC. No. 6

AUTHORITY IS REQUESTED FOR A NET EXPENDITURE OF \$ 2678

Accounting distribution as follows: (Distribution to be made in General Office.)

	Operating Expenses	Profit and Loss	Net Operating Expenses	Net Profit and Loss
Cost of property retired	1031		1031	
Value of salvage			419	1450 ✓
Incidental costs				
Total to Operating Expenses				
Total to Profit and Loss				
To Material and Supplies				
To Bills for Collection				
To Other Accounts				
Net charge to investment account—Additions and Betterments				1228 ✓
Total of distribution				2678 ✓

Original Cost Adjustment
Made in Final 1929

Budget reference: NOT IN BUDGET

Joint facility contract reference: G. N. Ry } 7-1-09
OVR&N

The location is
Location: Webesh (near)

Title
and
Rebuilding pile bulkhead at MP 51 plus 157

Reason:
Inspection developed the fact that the pile and timber bulkhead located at Mile Post 51 plus 157 was badly decayed and it was necessary to rebuild the bulkhead in kind. The work was completed in July 1928, and RFA is submitted to cover work already done and for record purposes.
Blue print and estimate attached.



Completed July 1928

Work ~~XXXX~~ by company force under charge of

Superintendent
Division Accountant

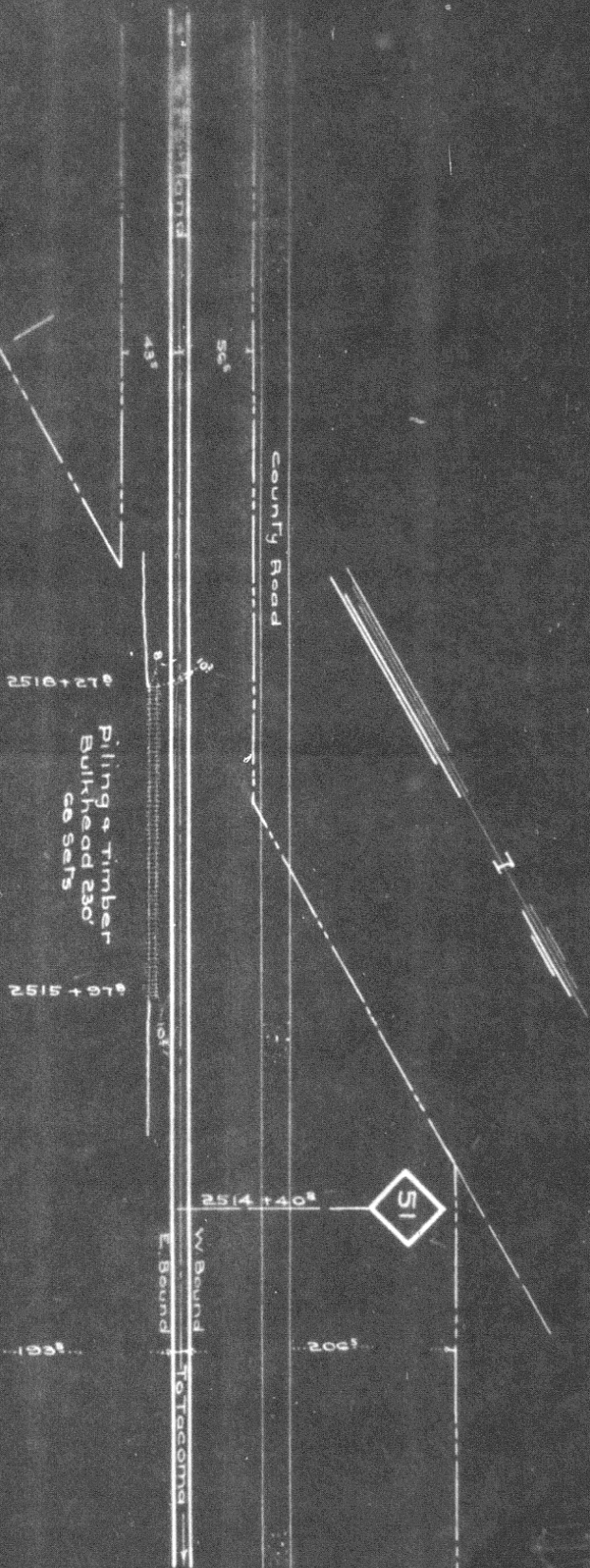
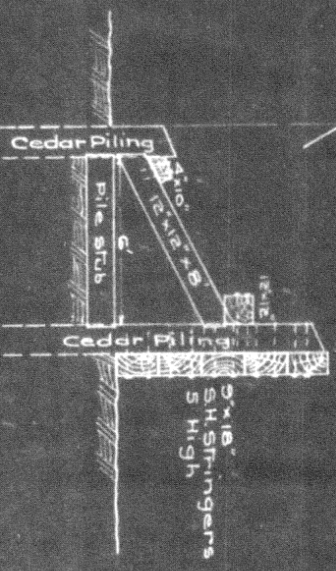
Date Dec 31 19 28

Accounting to concentrate in the office of		Date
Signature and Title:	Superintendent	
APPROVED: <i>[Signature]</i>	General Superintendent	
	Asst. Chief Engr. or Engr. Maint. of Way	
	Mech. Supt., Supt. Telgr. or Signal Engr.	
	Chief Engineer	
	For Comptroller	
	President	
	Vice-President	
	General Manager	

COMPTROLLER'S RECORD OF NOTICE OF APPROVAL AND OF COMPLETION

Form No. 1346 issued 19 Work begun 19 Work finished Nov 5 1928

Scale 1" = 5' TYPICAL SET CASETS



N.P.R.y.
 Tacoma Div. Main Line
 Wash. Vol. Sec. 6
Rebuild Pile & Timber Bulkhead
 at M.P. 51+157
 "Near"
WABASH W.N.
 Office of Dist. Engr. Seattle Wn.
 Scale 1" = 100' Dec: 17 1926