



N. P. 1363  
6-24

NORTHERN PACIFIC RAILWAY COMPANY  
AUTHORITY FOR EXPENDITURE

ANY CONTROLLER'S COPY

SUPERINTENDENT'S No. 140  
No.

1929

DEPT. No.  
ENGINEERING DEPT. No. 4

1929  
YEAR 1929  
A. F. E. NO. 200

Lake Superior Div. Cuyuna Northern Line DISTRICT STATE Minn.  
BRANCH

VAL. SEC. No. 12-A

AUTHORITY IS REQUESTED FOR A NET EXPENDITURE OF \$ 5,668.00

Accounting distribution as follows: (Distribution to be made in General Office.)

	Operating Expenses	Profit and Loss	Net Operating Expenses	Net Profit and Loss
Cost of property retired				
Value of salvage				
Incidental costs				
Total to Operating Expenses				
Total to Profit and Loss				
To Material and Supplies				
To Bills for Collection				
To Other Accounts				
Net charge to investment account—Additions and Betterments				
Total of distribution				

Original Cost Adjustment  
Made in June 8, 1929  
Final

5668 ✓  
5668 ✓

Budget reference: NOT IN BUDGET

Joint facility contract reference: Joint with MStP&SSM Ry. Contract, June 11, 1928. Class of Work: No. 10

The location is on this company's property. To secure rights, it will be necessary

Location: Ironton

Title and Reason: Acquire one-half interest in tracks of MStP&SSM Ry. serving the Mahnommen Mine.

The attached estimate and sketch covers cost of acquiring one-half interest in additional trackage built by the Soo Line to serve the Mahnommen Mine. This work is covered by Soo Line bills 3-6959-38 and 7-7106-28.

This work is supplementary to the trackage built by the Soo Line covered by AFE 1208-28 and the Northern Pacific interest in these tracks is covered by contract dated June 11, 1928.

Work to be done by company force under charge of Superintendent

Accounting to concentrate in the office of Superintendent

Signature and Title: H. Jacobus Superintendent Date Dec. 14th 1928.

APPROVED: <i>H. Jacobus</i> General Superintendent.	<i>J. H. ...</i> Asst. Chief Engr. in-Charge Maint. of Way.	<i>H. ...</i> General Manager.
<i>Wm. ...</i> Mech. Supt., Supt. Tel'g. or Signal Engr.	<i>Wm. ...</i> Chief Engineer.	<i>W. ...</i> Vice President.
<i>W. ...</i> For Comptroller.	<i>Charles Soumeier</i> President.	Date of Final Approval: FEB 1 1929

COMPTROLLER'S RECORD OF NOTICE OF APPROVAL AND OF COMPLETION

Form No. 1345 issued. Work begun Work finished July 6 1929



CUYUNA-MILLE LACS MINE

To Ferro Mine

LOUISE MINE

Sec. 3, T.46 N, R. 29 W.  
Sec. 10,

H.B. 297+92<sup>3</sup> Ld. 74.7

Deebe Jct.

H.B. 8+38 Ld. 64.3

H.B. 0+93

H.B. 252+015+0+00

H.B. 97+56+68H

H.B. 2+93.5 Ld. 69.3

589.0-80°

478-80°

MAHNOMEN MINE

H.B. 246+827-0100 d. 73.5  
H.B. 246+672-0+00 d. 74

H.B. 3+18+14.74

To Peigh Mine

AL 80°

100-80°

100-80°

100-80°

100-80°

100-80°

100-80°

100-80°

100-80°

100-80°

100-80°

100-80°

100-80°

100-80°

100-80°

100-80°

100-80°

100-80°

100-80°

100-80°

100-80°

100-80°

100-80°

100-80°

100-80°

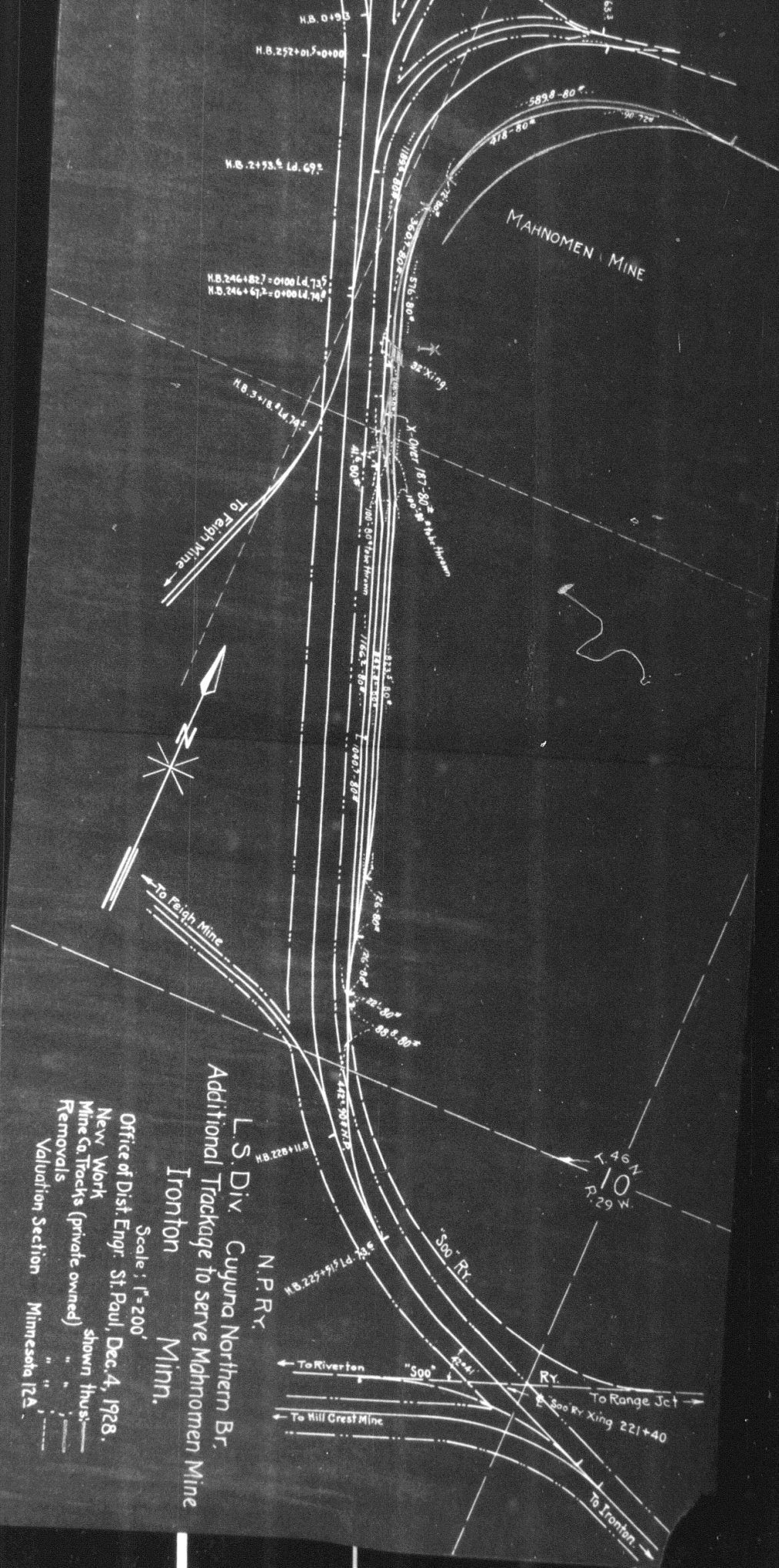
100-80°

100-80°

100-80°



To Peigh Mine



L.S. Div. Cuyuna Northern Br.  
 Additional Trackage to serve Mahnomen Mine  
 Ironton Minn.

N.P.R.Y.  
 Scale: 1" = 200'  
 Office of Dist. Engr. St. Paul, Dec. 4, 1928.  
 New Work  
 Mine Co. Tracks (private owned) shown thus: ———  
 Removals  
 Valuation Section Minnesota 12A