



N. P. 1363
6-24

NORTHERN PACIFIC RAILWAY COMPANY

AUTHORITY FOR EXPENDITURE

1929
YEAR 1928

SUPERINTENDENT'S No.

Manager's No. 16

DEPT. No.

ENGINEERING DEPT. No. 41-28

A. F. E. NO. 7

Camas Prairie R. R. Div. Camas Prairie R. R.

DISTRICT BRANCH STATE Idaho

VAL. SEC. No. 4

AUTHORITY IS REQUESTED FOR A NET EXPENDITURE OF \$ 666.

Accounting distribution as follows: (Distribution to be made in General Office.)

	Operating Expenses	Profit and Loss	Net Operating Expenses	Net Profit and Loss
Cost of property retired	29	14		
Value of salvage	15	31		
Incidental costs				
Total to Operating Expenses				45
Total to Profit and Loss				15
To Material and Supplies				
To Bills for Collection				
To Other Accounts				1130
Net charge to investment account—Additions and Betterments				1741
Total of distribution				671

Budget reference: Not in budget

Joint facility contract reference: Basis C-W.R.R.&N. Contract 3/10/26 Valuation

The location is _____ on this company's property. To secure rights, it will be necessary

Location: Lewiston, Idaho

Title Construct Spur to Serve Clearwater Timber Company Hot Pond
and Track increase 214 feet.

Reason: The log pond at Lewiston freezes over in winter. In order to permit continuous operation, the Clearwater Timber Company has built a spur cutting off seven acres of the log pond which is to be used as a hot pond. The hot pond will probably be in use two months of each year. A turnout has been constructed by the Railroad Company from Headblock to Clearance Point to connect with spur constructed by the Timber Company. Turnout constructed on authority of Mr. A. V. Brown's telegram, File B-201 of September 12th, 1928, under terms of Paragraph A of the memorandum dated July 16, 1925, i.e., the Railroad will bear cost of installation from Headblock to Clearance Point and the Timber Company will assume the balance of the cost.

APPROVED
Chas. Powell
CHAS. POWELL
General Superintendent

APPROVED
J.P. Brown
J.P. BROWN
General Manager

Work to be done by company force under charge of Supervisor of Maintenance of Way, C.P.R.R. & N.

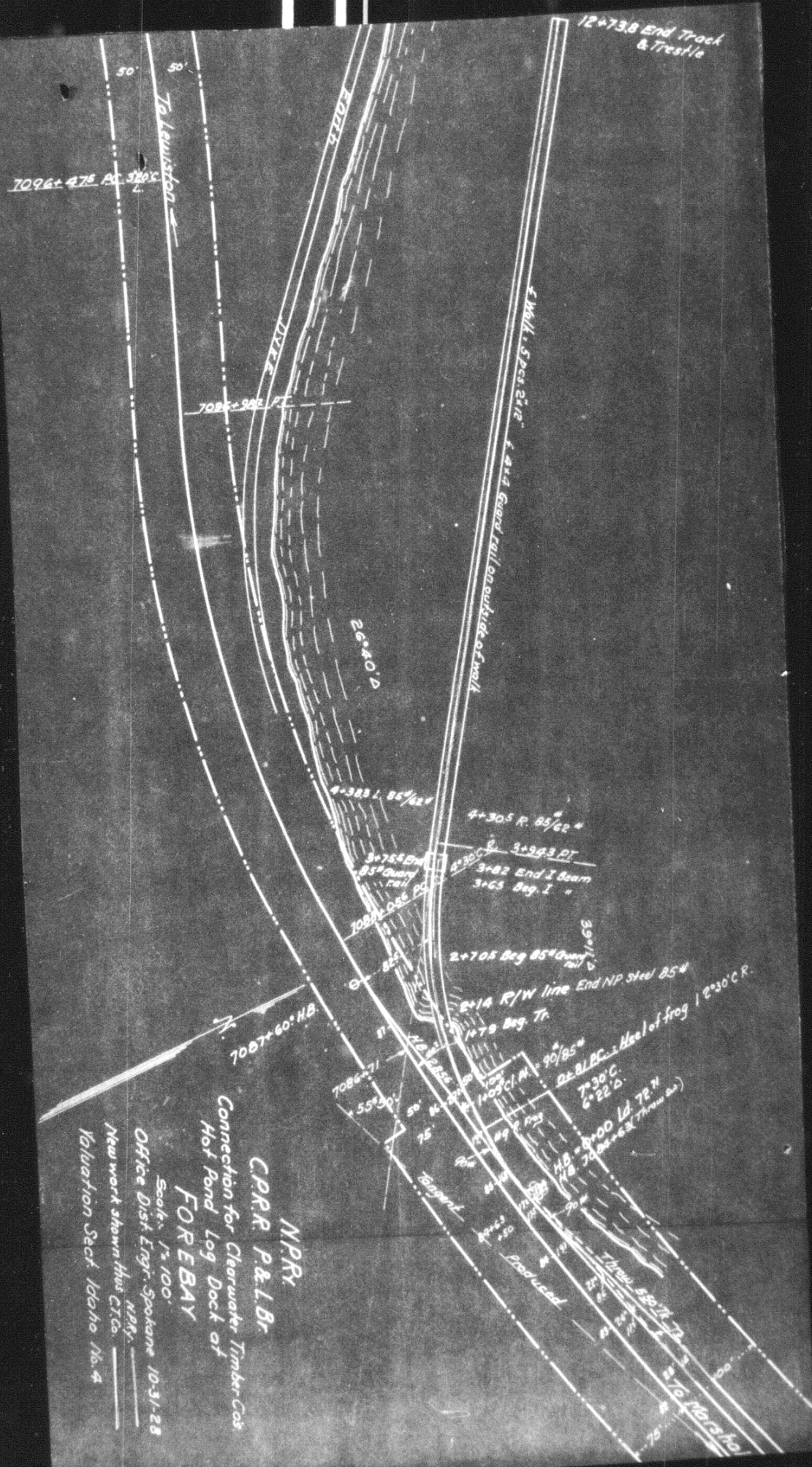
Accounting to concentrate in the office of Auditor, Camas Prairie R.R. Co., Lewiston, Idaho

Signature and Title: *Chas. Powell* Checked and Entered
General Superintendent, Asst. Chief Engr. of Engr. Maint. of Way, General Manager
Date Nov. 5, 19 28

APPROVED:	<i>Chas. Powell</i>	<i>J.P. Brown</i>
General Superintendent	Asst. Chief Engr. of Engr. Maint. of Way	General Manager
Mech. Sup't., Sup't. Telgr. or Signal Engr.		
<i>Benad Blum</i>		<i>H.E. Thomas</i>
Chief Engineer		Vice President
<i>W. J. ...</i>	<i>Charles ...</i>	Date of Final Approval
For Comptroller	By Engr.	

COMPTROLLER'S RECORD OF NOTICE OF APPROVAL AND OF COMPLETION

1345 issued _____ 19 _____ Work begun _____ 19 _____ Work finished *Sept. 29 1928*



NP & C.P.R.R.
 P & L B R
 Connection for Clearwater Timber Co.
 Hot Pond Log Dock of
FOREBAY
 Scale: 1" = 100'
 Office Dist. Engr. Spokane 10-31-28
 New work shown thus: _____
 NP & C.P.R.R.
 Valuation Sect. Icho No. 4

Produced
 12+73.8 End Track & Trestle
 To Lewisport
 To Harpers