



N. P. 1363  
6-24

# NORTHERN PACIFIC RAILWAY COMPANY AUTHORITY FOR EXPENDITURE

COMPTROLLER'S COPY

1929 1929  
YEAR 1929

SUPERINTENDENT'S No. 9

No. 1

DEPT. No. 9-1929

ENGINEERING DEPT. No. 95-28

A. F. E. NO. 179

P A S C O Div. FIRST SUB-DIVN.

DISTRICT STATE WASH. VAL. SEC. No. 1

AUTHORITY IS REQUESTED FOR A NET EXPENDITURE OF \$ 1130.

Accounting distribution as follows: (Distribution to be made in General Office.)

	Operating Expenses	Profit and Loss	Net Operating Expenses	Net Profit and Loss
Cost of property retired	727			
Value of salvage	569			
Incidental costs			158	
			499	
Total to Operating Expenses				657 ✓
Total to Profit and Loss				569 ✓
To Material and Supplies				
To Bills for Collection				
To Other Accounts				
Net charge to investment account—Additions and Betterments				473 ✓
Total of distribution				1699 ✓

Budget reference: *89-1929*  
*Item 67-1929*

Class of Work: No. 3 ✓

Joint facility contract reference: **Non Joint.**

The location is \_\_\_\_\_ on this company's property. To secure rights, it will be necessary

Location: **Cunningham, Washington**

Title: **Replacing Light Rail in Passing and Industry Tracks With Heavier Rail.**

Reason: **A portion of the industry track serving the various grain warehouses, and also a portion of the passing track is laid with light rail which is difficult to maintain under the heavy power now operating. It is recommended that the light rail be replaced with third class 85# rail in accordance with the attached sketch and estimate.**

Work to be done by ~~company force~~ **contract** under charge of **Superintendent**

Accounting to concentrate in the office of **Division Accountant**

Checked and Extraordinary President's Office

Signature and Title: *L. Houston*

**Superintendent**

Date **July 31st 28**



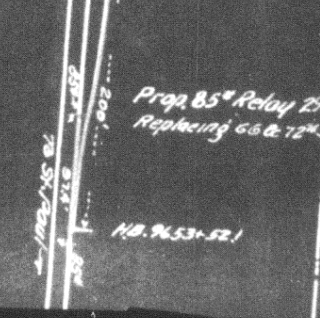
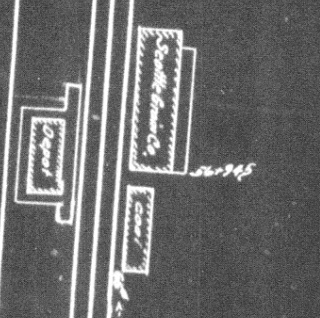
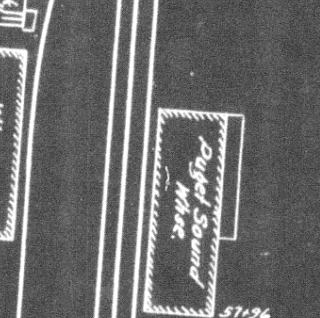
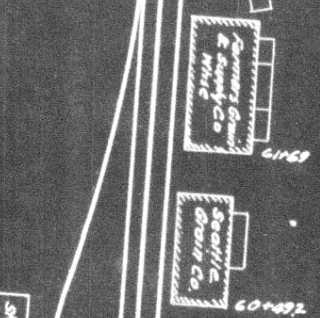
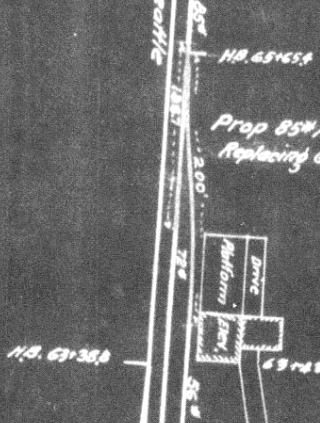
APPROVED: <i>[Signature]</i> General Superintendent	<i>[Signature]</i> Asst. Chief Engr. or Engr. Maint. of Way.	<i>[Signature]</i> General Manager
<i>[Signature]</i> Mech. Supt., Supt. Telgh. or Signal Engr.	<i>[Signature]</i> Chief Engineer	<i>[Signature]</i> Vice President
<i>[Signature]</i> For Comptroller	<i>[Signature]</i> President	Date of Final Approval: <b>JAN 29 1929</b>

COMPTROLLER'S RECORD OF NOTICE OF APPROVAL AND OF COMPLETION

Form No. 1345 issued \_\_\_\_\_ 19 \_\_\_\_\_ Work begun \_\_\_\_\_ 19 \_\_\_\_\_ Work finished *Oct. 23* 19 *28*

To Seattle

Prop 85<sup>th</sup> Relay 2067  
Replacing 66<sup>th</sup> & 56<sup>th</sup> Sigsbee  
1-66<sup>th</sup> Switch  
1-66<sup>th</sup> Frog  
210<sup>th</sup> in. Ft. 66<sup>th</sup> Rail  
310<sup>th</sup> " " 56<sup>th</sup> "



N.P.R.R.  
 Pasco Div. 1st Dist.  
 Prop. Relay of Pasco & Industry Track  
 CUNNINGHAM WASH  
 Office Dist Engr. Spokane 7-18-28  
 Valuation Section Wash.  
 Prop. New Work thus

Prop. 85<sup>th</sup> Relay 2971  
 Replacing 66<sup>th</sup> & 72<sup>th</sup> Sigsbee  
 1-66<sup>th</sup> Switch  
 1-66<sup>th</sup> Frog  
 481.7 in. Ft. 66<sup>th</sup> Rail  
 60.1 " " 72<sup>th</sup> "

H.B. 96531.52.1