



N. P. 1363
6-24

NORTHERN PACIFIC RAILWAY COMPANY

AUTHORITY FOR EXPENDITURE

COMPTROLLER'S COPY

1929 1929
YEAR 1929

SUPERINTENDENT'S NO.

M.F.C. No.

Pasco

Div.

Second

DEPT. No.

ENGINEERING DEPT. No. 3

A. F. E. NO.

177

DISTRICT STATE

Wash.

VAL. SEC. No. 2

AUTHORITY IS REQUESTED FOR A NET EXPENDITURE OF \$ 10 360.

Accounting distribution as follows: (Distribution to be made in General Office.)

	Operating Expenses	Profit and Loss	Net Operating Expenses	Net Profit and Loss
Cost of property retired	1 040.		1 000.	
Value of salvage	40.		660.	
Incidental costs				\$ 1 660. ✓
Total to Operating Expenses				
Total to Profit and Loss				40. ✓
To Material and Supplies				
To Bills for Collection				
To Other Accounts				8 700. ✓
Net charge to investment account—Additions and Betterments				10 400. ✓
Total of distribution				

Original Cost Assessment
Made in 2-78-1930
Final

Budget reference: Item 151, 1929 Budget

Class of Work: No. 4 ✓ ✓

Joint facility contract reference: None

The location is --- on this company's property. To secure rights, it will be necessary to do nothing

Location: Near Satus, Washington, Bridge 59, Drainage Canal

Title: Replace Timber Trestle with Reinforced Concrete Trestle.

Reason: The present structure consists of 90 feet of timber trestle, 17 feet high, built in 1919. The timber has reached the end of its life and must be renewed in 1929. It is proposed to replace it with a 96 foot Reinforced Concrete Trestle.

Cost of Permanent Work	\$10 360.
Cost to Renew in Kind	2 700.
Annual Cost Permanent Work	618.
Annual Cost Renewal in Kind	540.

Work to be done by company force under charge of **Division Superintendent**

Accounting to concentrate in the office of **Division Superintendent**

Checked and Entered
President's Office

Signature and Title:

M. Clement

Bridge Engineer

Date **Oct. 2, 1928**

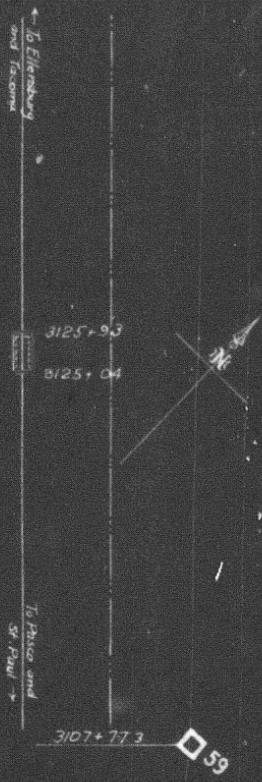
APPROVED:

General Superintendent.	Asst. Chief Engr. or Engr. Maint. of Way.	General Manager.
Mech. Supt., Supt. Telph. or Signal Engr.		
Chief Engineer.		Vice President.
For Comptroller.	President.	Date of Final Approval { JAN 29 1929 }

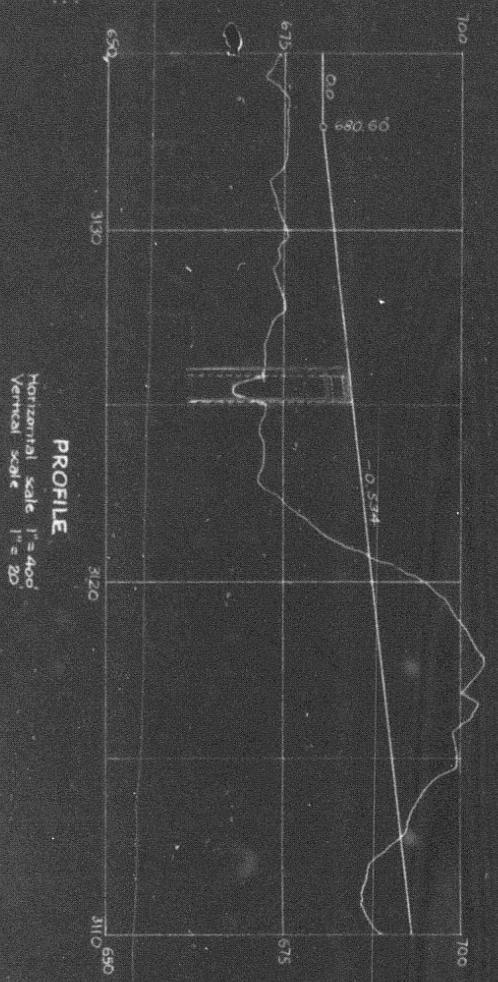
COMPTROLLER'S RECORD OF NOTICE OF APPROVAL AND OF COMPLETION

Form No. 1345 issued 19. Work begun 19. Work finished 19.

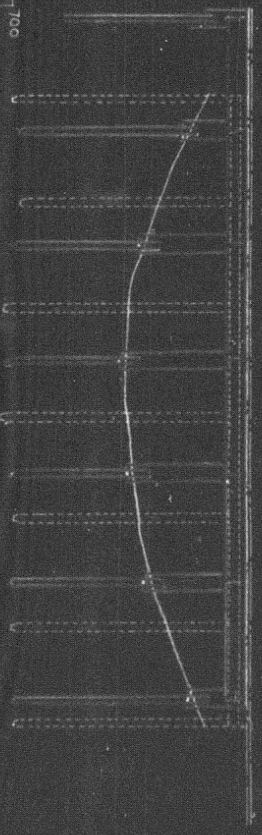




MAP
Scale 1" = 400'



PROFILE
Horizontal scale 1" = 400'
Vertical scale 1" = 20'



Present bridge consists of pile trestle 89 feet long.
Proposed bridge — 6 span reinforced concrete trestle 96 feet long.

N. P. RY
PASCO DIVISION — SECOND SUBDIVISION
BRIDGE 59 — DRAINAGE CANAL
SATUS
REPLACE TIMBER TRESTLE WITH REINFORCED CONCRETE TRESTLE

SCALES AS NOTED
Office of Bridge Engineer, St. Paul, Minn., Oct. 2, 1928.
Proposed New Work
Proposed Removals

VALUATION SECTION WASHINGTON #2.