



N. P. 1363
6-24

NORTHERN PACIFIC RAILWAY AUTHORITY FOR EXPENDITURE

COMP

ITS COPY

SUPERINTENDENT'S No.

M.F.C. No.

DEPT. No.

ENGINEERING DEPT. No. 1

1929
YEAR 1929
A. F. E. NO. 165

Montana

Div.

Third

DISTRICT

~~BRANCH~~

STATE

Montana

VAL. SEC. No. 13

AUTHORITY IS REQUESTED FOR A NET EXPENDITURE OF \$ 6 420.
Accounting distribution as follows: (Distribution to be made in General Office.)

	Operating Expenses	Profit and Loss	Net Operating Expenses	Net Profit and Loss
Cost of property retired	\$ 940.			
Value of salvage	20.			
Incidental costs			920.	
Total to Operating Expenses			135.	

Total to Profit and Loss \$ 1 055. ✓

To Material and Supplies

To Bills for Collection 20. ✓

To Other Accounts

Net charge to investment account—Additions and Betterments

Total of distribution \$ 5 365. ✓

Budget reference: Item 129- 1929 Budget Made in 8-11 1921 \$ 6 440. ✓

Joint facility contract reference: None Class of Work: No. 4 ✓

The location is --- on this company's property. To secure rights, it will be necessary to do nothing

Location: Near Logan, Montana, Bridge 3-1
Title: Replace Pile Trestle with Reinforced Concrete Trestle
and

Reason: The present structure consists of a 94 foot pile trestle 11 feet high, built in 1903. The timber has reached the end of its life and must be replaced in 1929. It is proposed to build a reinforced concrete trestle 64 feet long on concrete piling.

Cost of Permanent Work	\$6 420.
Cost to Renew in Kind	2 350.
Annual Cost Permanent Work	385.
Annual Cost Renewal in Kind	470.

Work to be done by ~~company force~~ under charge of ~~contract~~ Division Superintendent
Accounting to concentrate in the office of Division Superintendent at Livingston

Checked and Entered
President's Office



Signature and Title: *M. B. Clements* Bridge Engineer Date Nov. 14, 1928

APPROVED:			
General Superintendent.		Asst. Chief Engr. or Engr. Maint. of Way.	General Manager.
Mech. Supt., Supt. Telg. or Signal Engr.			
<i>Dennis Johnson</i> Chief Engineer.			<i>W. H. ...</i> Vice President.
<i>W. H. ...</i> For Comptroller.	<i>Charles ...</i> President	Date of Final Approval { JAN 29 1929	19...

COMPTROLLER'S RECORD OF NOTICE OF APPROVAL AND OF COMPLETION

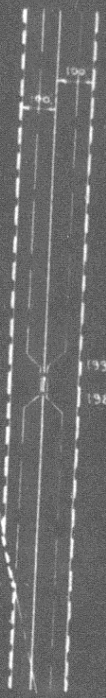
Form No. 1345 Issued 19... Work begun 19... Work finished Oct 7 29



BR 3-1

195.861
195.561

MAP
1"=400'



PROF. 1"=400'
VERT. 1"=20'



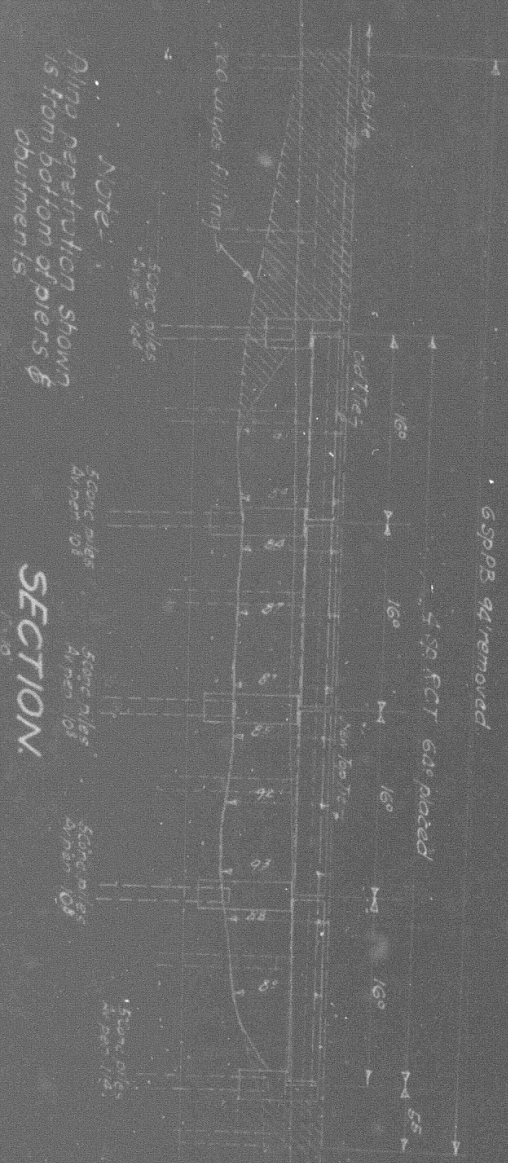
ELEVATION
1"=20'-0"

N.P.R.Y.
MONTANA DIVISION
NEAR LOGAN
THIRD DIST.
REPLACE PILE TREESTYLE WITH REINCONCRETE
BRIDGE 3-1
Office of Bridge Eng'r: St. Paul Minn. Nov. 13, 1938
Proposed New Work
Proposed Retirements
VALUATION SECTION MONT. 13.



PROFILE
Scale: 1/4" = 1'-0"

NOTE
Work done according to Bridge Eng's plans Nos 73019 and 151025



SECTION



LOCATION MAP
Scale: 1" = 100'

Replace pile trestle with reinf'd conc bridge No. 31
Mont. Div. N.P.R. 3rd Dist.
near Logan

Office of Asst. Engr. Livingston Montana April 22nd 1930
New work shown
Scale as shown
Removals shown
Valuation Section Montana No 13
Auth under Imp't 165 29 dated 1-29-29
Work begun July 1929
Work completed October 7th 1929