



N. P. 1363
6-24

NORTHERN PACIFIC RAILWAY COMPANY

AUTHORITY FOR EXPENDITURE

COMPTROLLER'S COPY

YEAR 1929

SUPERINTENDENT'S NO.

DEPT. NO.

M.F.C. No.

ENGINEERING DEPT. NO.

A. F. E. NO. 114

Rocky Mountain

DIV. Second

DISTRICT STATE Montana

VAL. SEC. NO. 16

AUTHORITY IS REQUESTED FOR A NET EXPENDITURE OF \$ 4 480.

Accounting distribution as follows: (Distribution to be made in General Office.)

	Operating Expenses	Profit and Loss	Net Operating Expense	Net Profit and Loss
Cost of property retired	\$ 600.			
Value of salvage	20.		580.	
Incidental costs			90.	
Total to Operating Expenses				\$ 670.
Total to Profit and Loss				
To Material and Supplies				20.
To Bills for Collection				
To Other Accounts				
Net charge to investment account—Additions and Betterments				3 810.
Total of distribution				\$ 4 500.

Budget reference: ^{1386/42} Items Budget for 1929.

Class of Work: No. 4

Joint facility contract reference: None

The location is on this company's property. To secure rights, it will be necessary to do nothing

Location: Near Warm Springs, Montana, Bridge 22-2, Drainage Ditch

Title: Replace Pile Trestle with Reinforced Concrete Trestle

and

Reason: The present structure consists of a four span pile trestle 59 feet long and 9 feet high, built in 1915. It has reached the end of its life and must be renewed in 1929. It is proposed to replace it with a standard reinforced concrete trestle 32 feet long.

Total Cost of Permanent Work	\$4 480.
Total Cost of Renewal in Kind	1 500.
Annual Cost of Permanent Work	269.
Annual Cost of Renewal in Kind	300.

Work to be done by company force under charge of Division Superintendent

Accounting to concentrate in the office of Division Superintendent

Signature and Title: *[Signature]* Bridge Engineer

Date Nov. 8, 1928

APPROVED:

General Superintendent Asst. Chief Engr. or Engr. Maint. of Way General Manager

Mech. Supt., Supt. Telgr. or Signal Engr.

Chief Engineer

Vice President

For Comptroller

President

Date of Final Approval { JAN 20 1929 } 19...

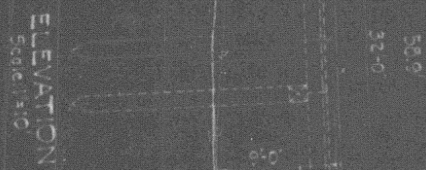
COMPTROLLER'S RECORD OF NOTICE OF APPROVAL AND OF COMPLETION

Form No. 1345 issued 19... Work begun 19... Work finished *at 26 29* 19...

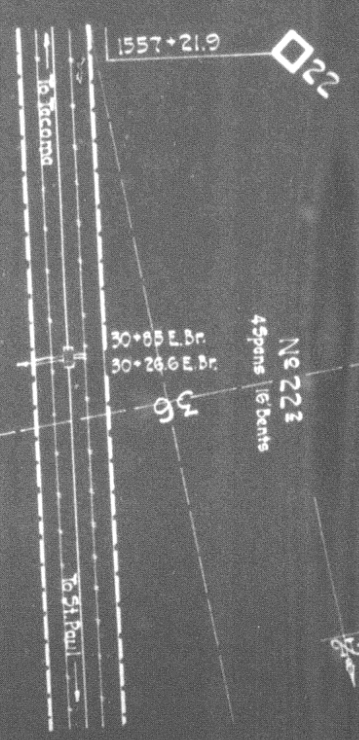




PROFILE
Horizontal, 1"=400' Vertical, 1"=20'



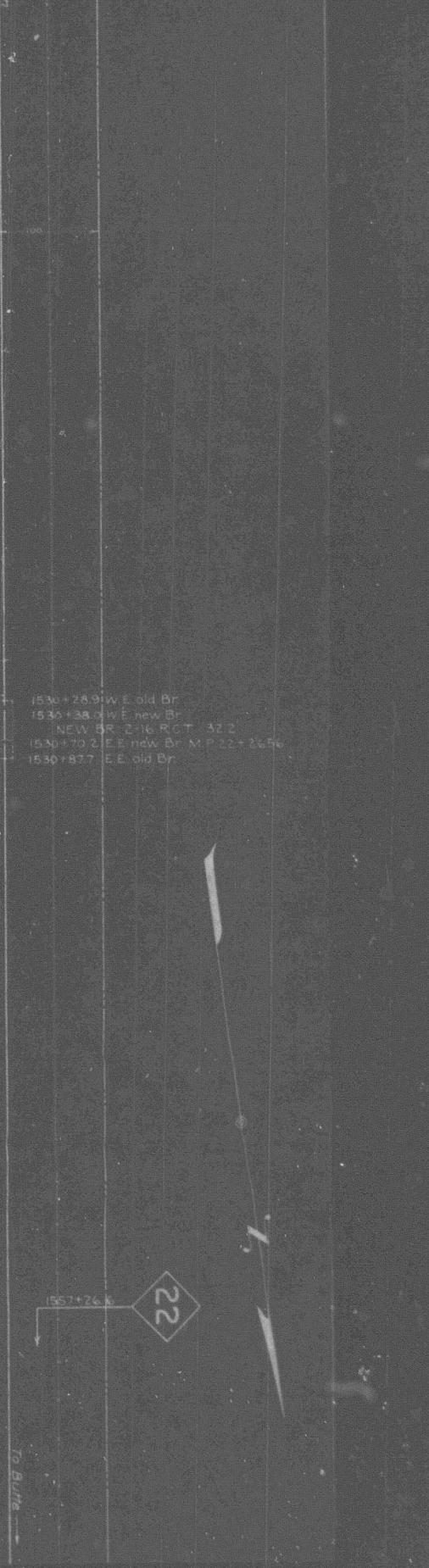
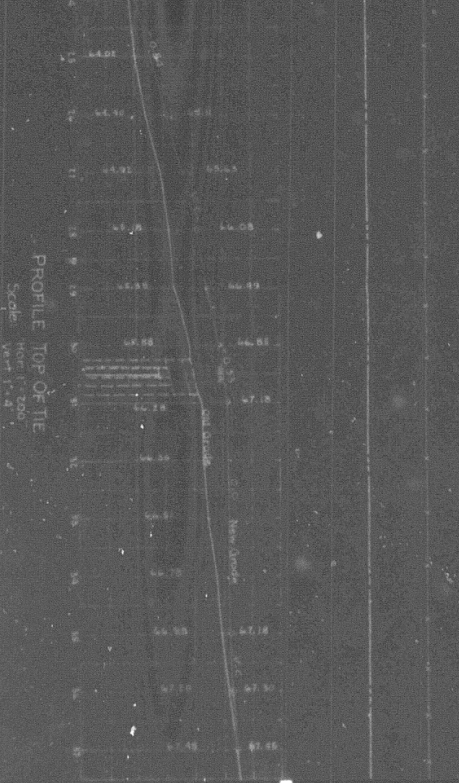
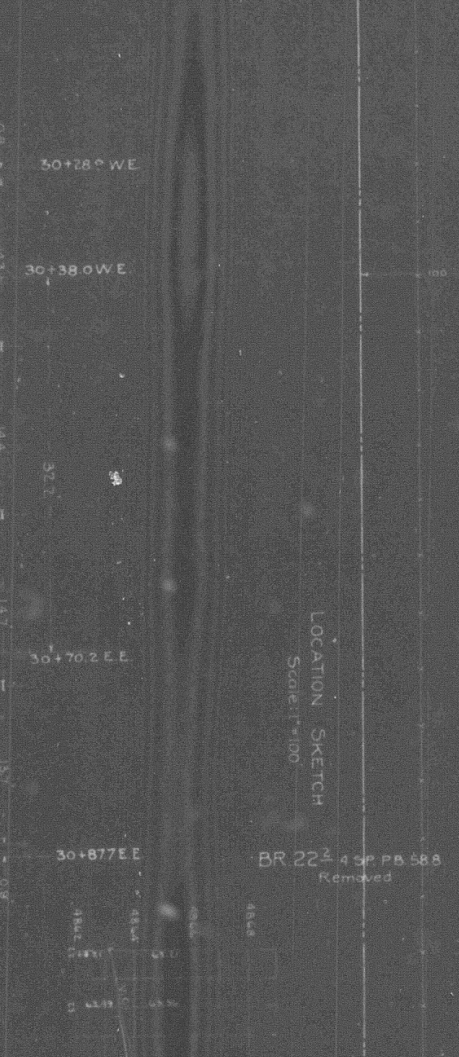
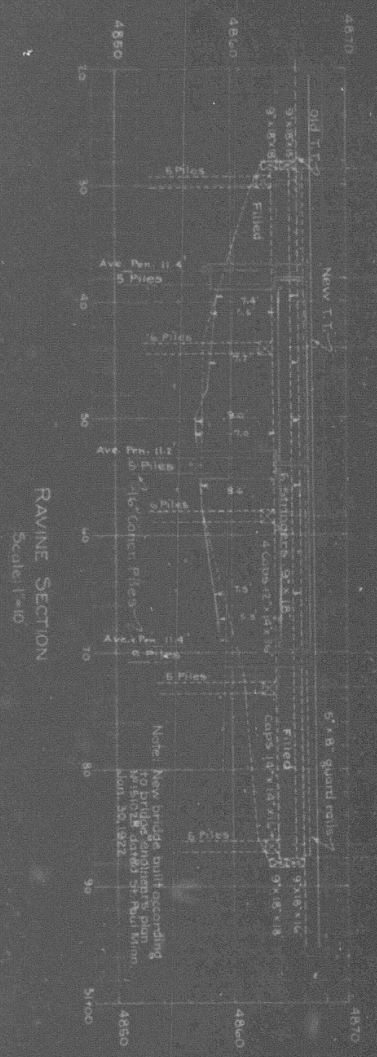
ELEVATION
Scale: 1"=10'



MAP
Scale: 1"=400'

REPLACE PILE TRESTLE WITH 2-16FT REINFORCED CONCRETE SPANS
NEAR WARM SPRINGS, MONT.
BRIDGE 223 OVER DRAINAGE DITCH
Validation Section Vertical 6

NORTHERN PACIFIC RAILWAY
ROCKY MOUNTAIN DIVISION SECOND SUBDIVISION
Office of Bridge Engineer, St. Paul, Minn. Nov. 2, 1928
Proposed new work shown in red
Material to be removed shown dotted



R.M. DIV. NP. RY. 2nd DIST.

WARM SPRINGS (HEAD)

REPLACE PILE TRESTLE WITH CONCRETE TRESTLE-BR 22

Scale as shown
New work shown
Removals shown

Office of Asst. Engr. Missoula, Mont. Jan 21, 1930

Valuation section
Authorized under Imp. #114-29 dated 1-26-29.
Work begun Feb. 1929
Work completed Oct. 26, 1929

Mont. #16