



N. P. 1363
6-24

NORTHERN PACIFIC RAILWAY COMPANY
AUTHORITY FOR EXPENDITURE

COMPTROLLER'S COPY

YEAR 1929

SUPERINTENDENT'S NO.

DEPT. NO.

M.F.C. No.

ENGINEERING DEPT. NO.

A. F. E. NO.

Yellowstone Div.

Third

DISTRICT ~~Branch~~ STATE

Montana VAL. SEC. NO. 1

AUTHORITY IS REQUESTED FOR A NET EXPENDITURE OF \$ 2 830.

Accounting distribution as follows: (Distribution to be made in General Office.)

	Operating Expenses	Profit and Loss	Net Operating Expenses	Net Profit and Loss
Cost of property retired	280.			
Value of salvage	20.		280.	
Incidental costs			330.	
Total to Operating Expenses				\$ 590. ✓
Total to Profit and Loss				
To Material and Supplies			20.	20. ✓
To Bills for Collection				
To Other Accounts				
Net charge to investment account—Additions and Betterments				2 240. ✓
Total of distribution				\$ 2 850. ✓

Budget reference: Item 27 1929 Budget

Class of Work: No. 4 ✓

Joint facility contract reference: None

The location is --- on this company's property. To secure rights, it will be necessary to do nothing

Location: Near Clermont, Montana, Bridge 96.

Title: Reinforce I Beam Spans

and

Reason: The present structure consists of 2-30 foot I Beam Spans on Concrete abutments and cylinder piers. The spans are overloaded by class Q5 power and do not permit the operation of Class "A" power. It is proposed to strengthen the spans by placing additional I Beams, making them good for 188½ ton loading.

Work to be done by company force under charge of Division Superintendent

Accounting to concentrate in the office of Division Superintendent

Signature and Title: *[Signature]* Bridge Engineer

Date Oct. 9, 1928

APPROVED

General Superintendent, Asst. Chief Engr. or Engr. Maint. of Way, General Manager

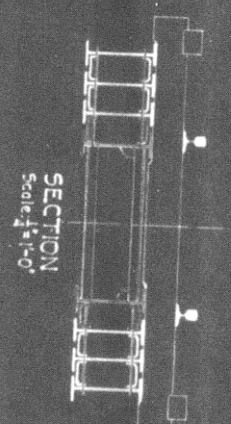
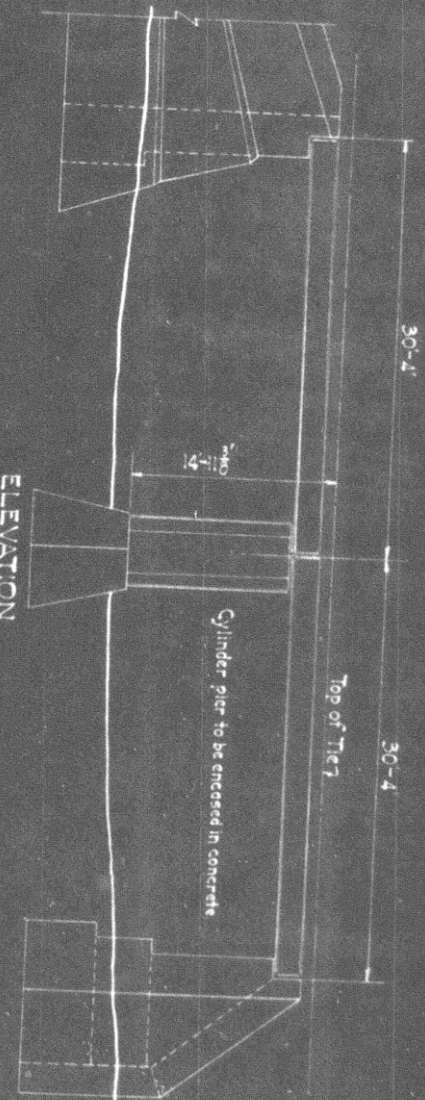
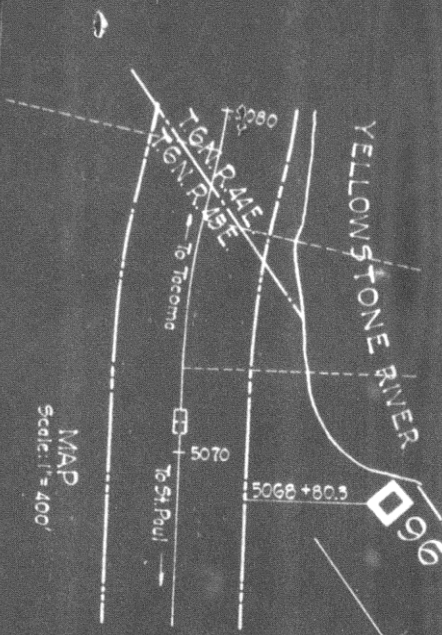
Mech. Supt, Supt. Trigh. or Signal Engr.

Chief Engineer, Vice President

For Comptroller, President, Date of Final Approval

COMPTROLLER'S RECORD OF NOTICE OF APPROVAL AND OF COMPLETION

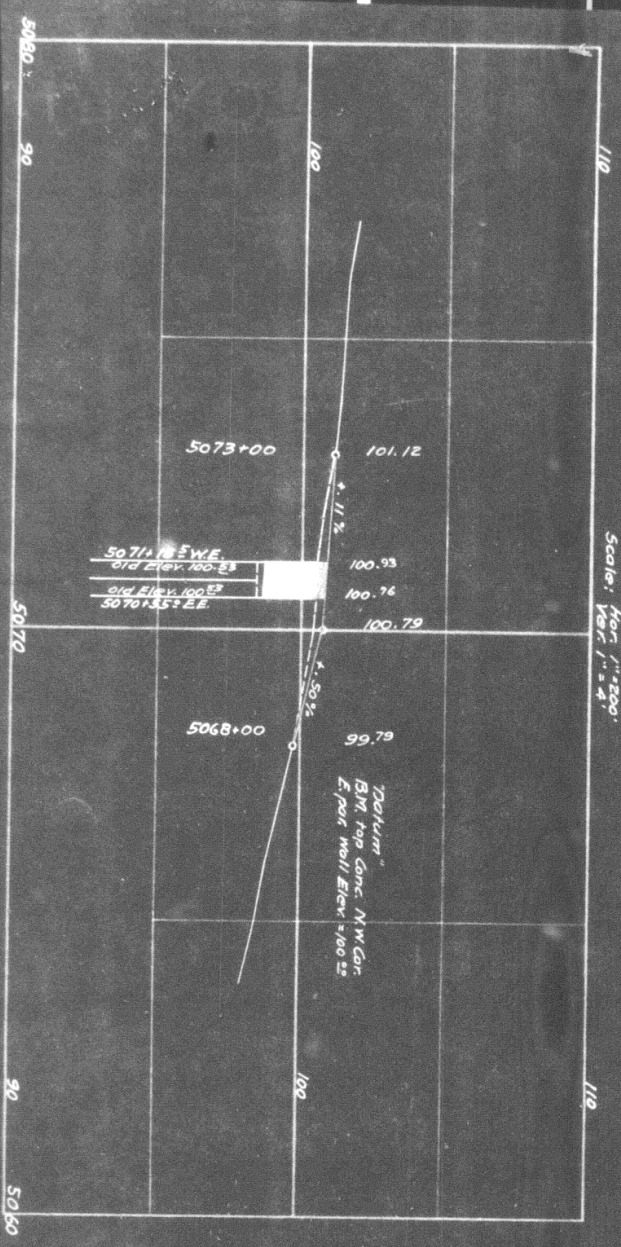
Form No. 1345 issued 19 Work begun 19 Work finished 1928



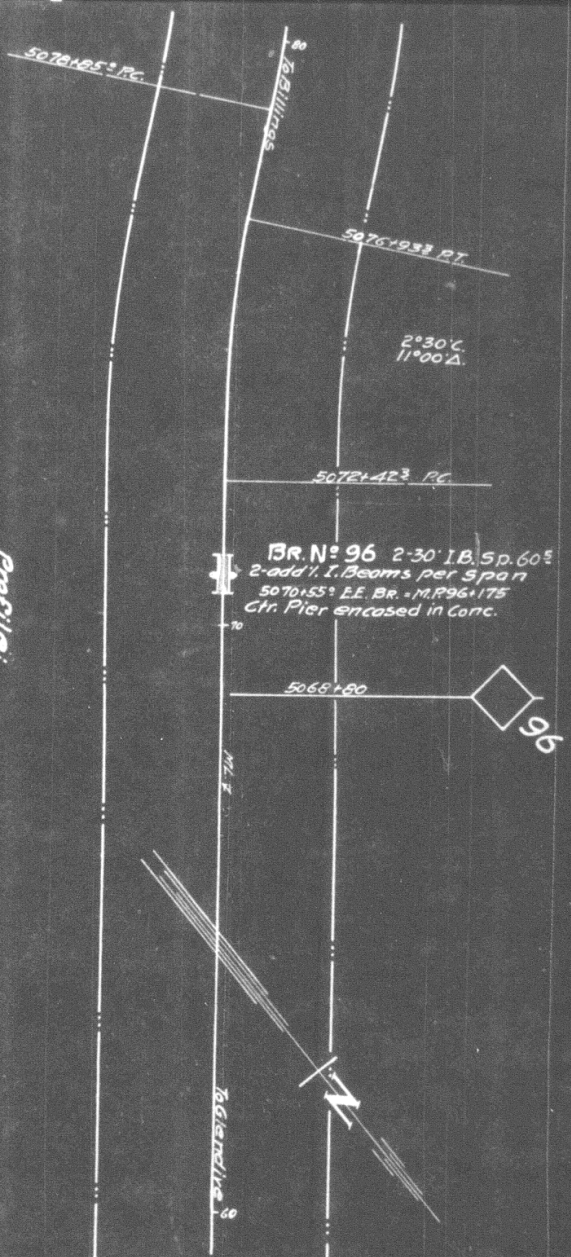
NORTHERN PACIFIC RAILWAY
 YELLOWSTONE DIVISION THIRD SUBDIVISION
 Valuation Section (Ment.)
BRIDGE 96 NEAR CLERMONT, MONT.
PROPOSED REINFORCEMENT OF 30FT.1 BEAM SPANS

Office of Bridge Engineer - St. Paul, Minn. Oct. 26, 1926

Scale: AS NOTED



Profile:
 Scale: Hor. 1"=200'
 Ver. 1"=4'



Bridge Reinforced for E-65 Loading.
 NOTE: for Detail see Plans #63068 & #172029.
 Office of Bridge Engr. Dated March 9, 1929.

N.Y.R.Y. 3rd Dist.
 Reinforce I-Beam Spans Bridge #96.
 New
Clermont
 Scale: 1"=200'
 New Work Shown
 Removals
 Office of Dist. Engr. Livingston, Mont. Jan. 22 - 1929.
 Valuation Section Mont. No. 1
 Ruth under Imp't No. 11-29. Dated 1-26-29.
 Work Begun Oct. 1929.
 Work Completed Dec. 2-1929.