



N. P. 1363
6-24

NORTHERN PACIFIC RAILWAY COMPANY AUTHORITY FOR EXPENDITURE

COMPTROLLER'S COPY

1929 1929
YEAR 1929

SUPERINTENDENT'S No.

M.F.C. No.

DEPT. No.

ENGINEERING DEPT. No. 15

A. F. E. NO.

108

Yellowstone Div.

Third

DISTRICT STATE

Montana VAL. SEC. No. 1

AUTHORITY IS REQUESTED FOR A NET EXPENDITURE OF \$ 1 910.

Accounting distribution as follows: (Distribution to be made in General Office.)

	Operating Expenses	Profit and Loss	Net Operating Expenses	Net Profit and Loss
Cost of property retired.....	200.		180.	
Value of salvage.....	20.		330.	
Incidental costs.....				\$ 510. ✓
Total to Operating Expenses.....				
Total to Profit and Loss.....				20. ✓
To Material and Supplies.....				
To Bills for Collection.....				
To Other Accounts.....				1 400. ✓
Net charge to investment account—Additions and Betterments.....				1 930. ✓
Total of distribution.....				

Original Cost Adjustment
Made in 4-14-30
Final

Budget reference: Item 122-1929 Budget

Class of Work: No. 4 ✓

Joint facility contract reference: None

The location is --- on this company's property. To secure rights, it will be necessary to do nothing

Location: Near Ulmer, Montana, Bridge 85

Title: Reinforce I Beam Spans.

Reason: The present structure consists of 2-30 foot I Beam Spans on concrete masonry. The spans are overloaded by class Q5 power and do not permit the operation of Class "A" power. It is proposed to strengthen the spans by placing additional I Beams, making them good for 188 1/2 ton loading.



Work to be done by company force under charge of ~~contract~~ Division Superintendent

Accounting to concentrate in the office of Division Superintendent

Signature and Title: *M. Clements* Bridge Engineer

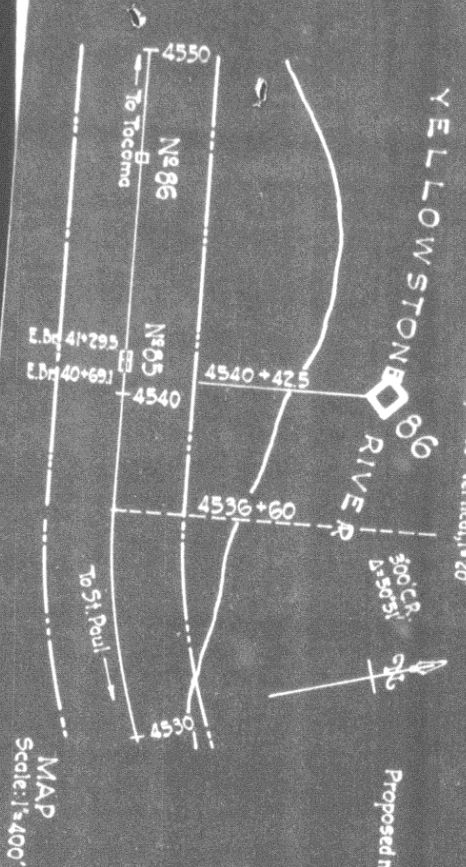
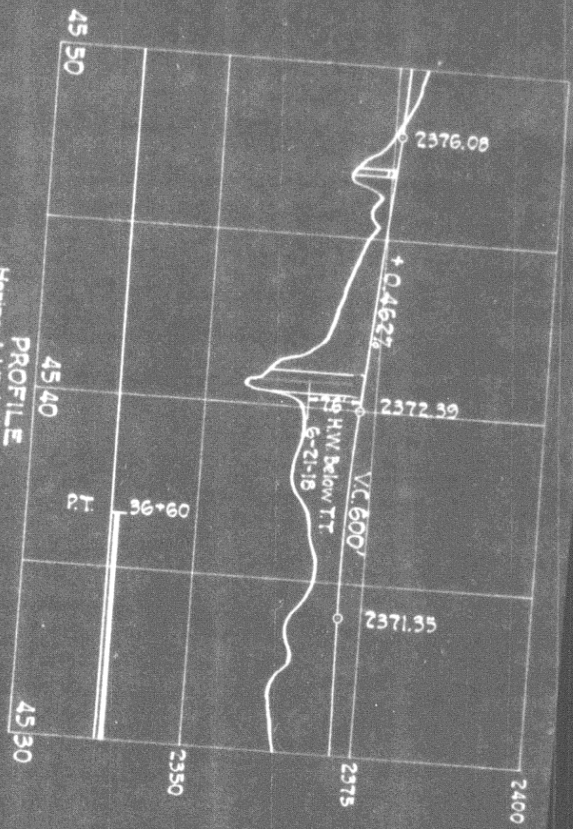
Date: Oct. 10, 1929

APPROVED:

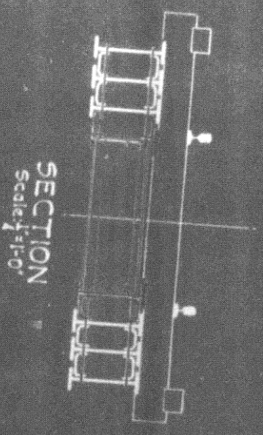
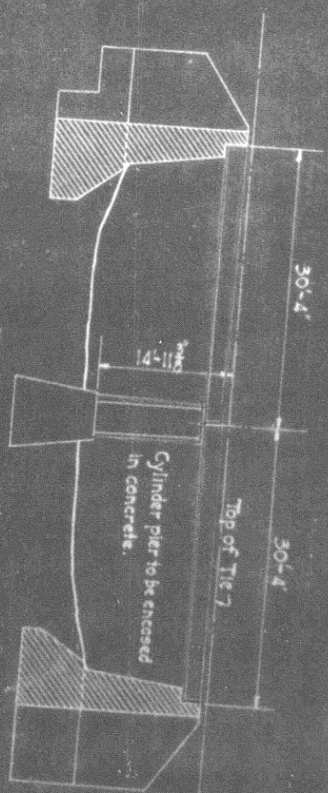
General Superintendent.	Asst. Chief Engr. or Engr. Maint. of Way.	General Manager.
Mech. Supt., Supt. Trigh. or Signal Engr.		
<i>Dennis</i> Chief Engineer.		<i>[Signature]</i> Vice President.
<i>[Signature]</i> For Comptroller.	<i>Charles Donnelly</i> President.	Date of Final Approval: JAN 26 1929

COMPTROLLER'S RECORD OF NOTICE OF APPROVAL AND OF COMPLETION

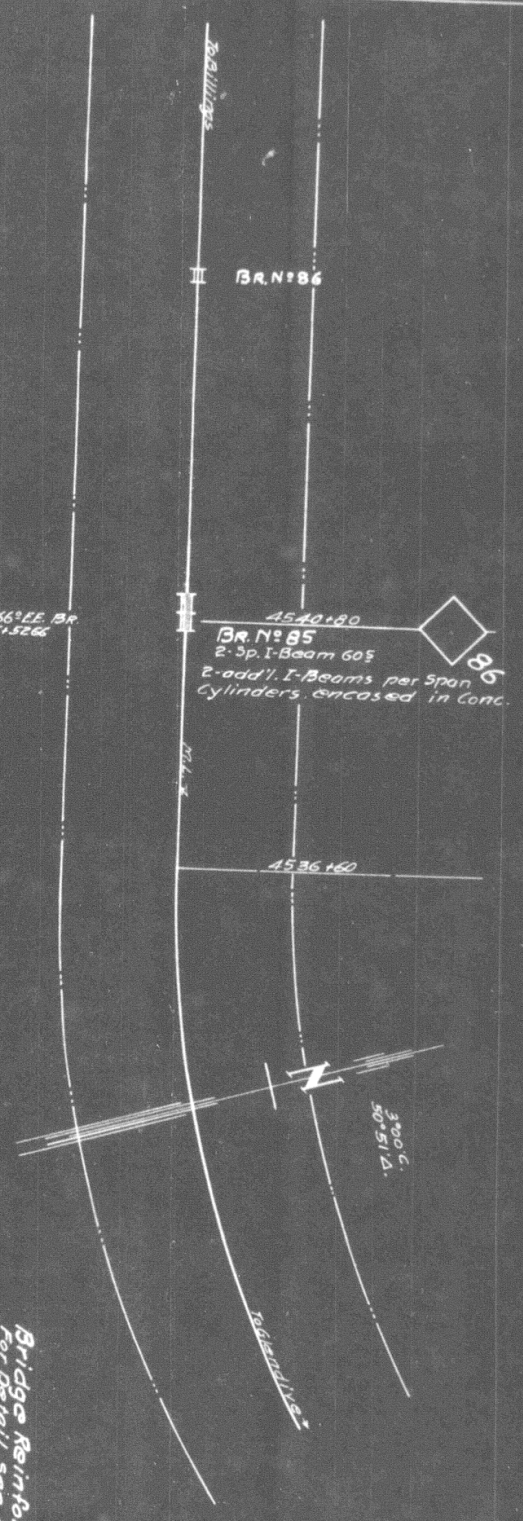
Form No. 1345 issued 19. Work begun 19. Work finished *Dec 6 '29*



Proposed new work shown in red



NORTHERN PACIFIC RAILWAY
 YELLOWSTONE DIVISION THIRD SUBDIVISION
 Valuation Section Month 1
BRIDGE 85 NEAR ULMER, MONT.
PROPOSED REINFORCEMENT OF 30FT I BEAM SPANS
 SCALES AS NOTED
 Office of Bridge Engineers St. Paul, Minn. Oct. 29, 1928



Bridge Reinforced for E-65 Loading
 For Detail See Plans # 172056 & 163058.
 Office of Bridge Engr. dated March 5-1929.

Yell. Div. N.R.R. 3rd Dist.
 Reinforce I-Beam Spans Bridge #85.
 New

Uimer

Scale: 1" = 200'
 New Work Shown
 Removals

Office of Dist. Engr. Livingston, Mont Jan 23-1930.
 Valuation Section
 Work under Imp't. No 108-29, dated 1-26-29
 Work Begun October - 1929
 Work Completed Dec. 6 - 1929