



N. P. 1363
6-24

NORTHERN PACIFIC RAILWAY COMPANY AUTHORITY FOR EXPENDITURE

COMPTROLLER'S COPY

SUPERINTENDENT'S NO.

M.F.C. NO.

DEPT. NO.

ENGINEERING DEPT. NO. 114

YEAR 1928

A. F. E. NO. 107

Yellowstone Div

Third

DISTRICT

STATE Montana

VAL. SEC. NO. 1

AUTHORITY IS REQUESTED FOR A NET EXPENDITURE OF \$ 3 290.

Accounting distribution as follows: (Distribution to be made in General Office.)

	Operating Expenses	Profit and Loss	Net Operating Expenses	Net Profit and Loss
Cost of property retired	280.			
Value of salvage	20.			
Incidental costs			260.	
Total to Operating Expenses			330.	
Total to Profit and Loss				\$ 590. ✓
To Material and Supplies				
To Bills for Collection			30	20. ✓
To Other Accounts				
Net charge to investment account—Additions and Betterments				
Total of distribution				2 700. ✓
				\$ 3 310. ✓

Budget reference: Item 122-1929 Budget

Joint facility contract reference: None

Class of Works: No. 4 ✓

The location is --- on this company's property. To secure rights, it will be necessary to do nothing

Location: Near Ulmer, Montana, Bridge 84

Title: Reinforce I Beam Spans

and

Reason: The present structure consists of 2-30 foot I Beam Spans on concrete abutments and cylinder piers. The spans are overloaded by Class Q5 power and do not permit the operation of Class "A" power. It is proposed to strengthen the spans by placing additional I Beams, making them good for E-65 loading.

Work to be done by company force under charge of Division Superintendent

Accounting to concentrate in the office of Division Superintendent

Signature and Title: *[Signature]* Bridge Engineer Date Oct. 10, 1928

APPROVED:

General Superintendent	Asst. Chf. Engr. or Engr. Maint. of Way	General Manager
Mech. Supt., Supt. Telgh. or Signal Engr.	Chief Engineer	Vice President
For Comptroller	President	Date of Final Approval

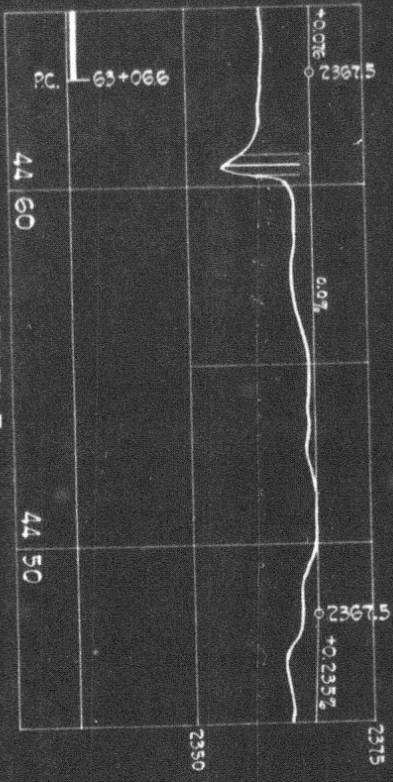
COMPTROLLER'S RECORD OF NOTICE OF APPROVAL AND OF COMPLETION

Form No. 1345 issued

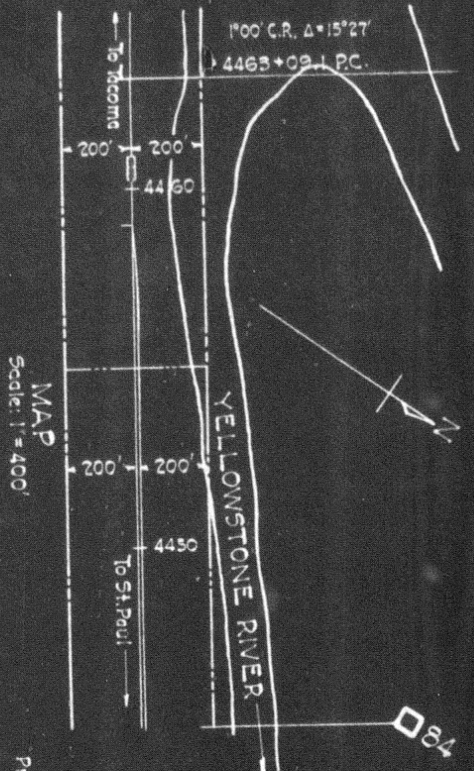
19 Work begun

19 Work finished

Nov 7 '28

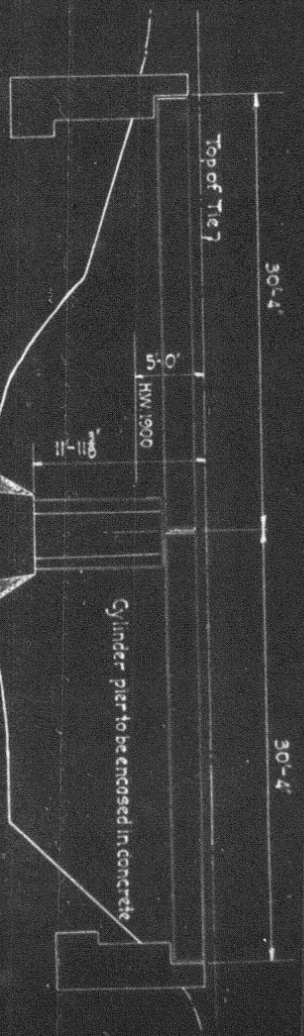


PROFILE
Horizontal, 1" = 400' Vertical, 1" = 20'

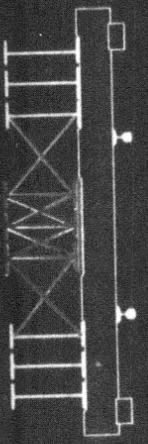


MAP
Scale: 1" = 400'

Proposed new work shown in red

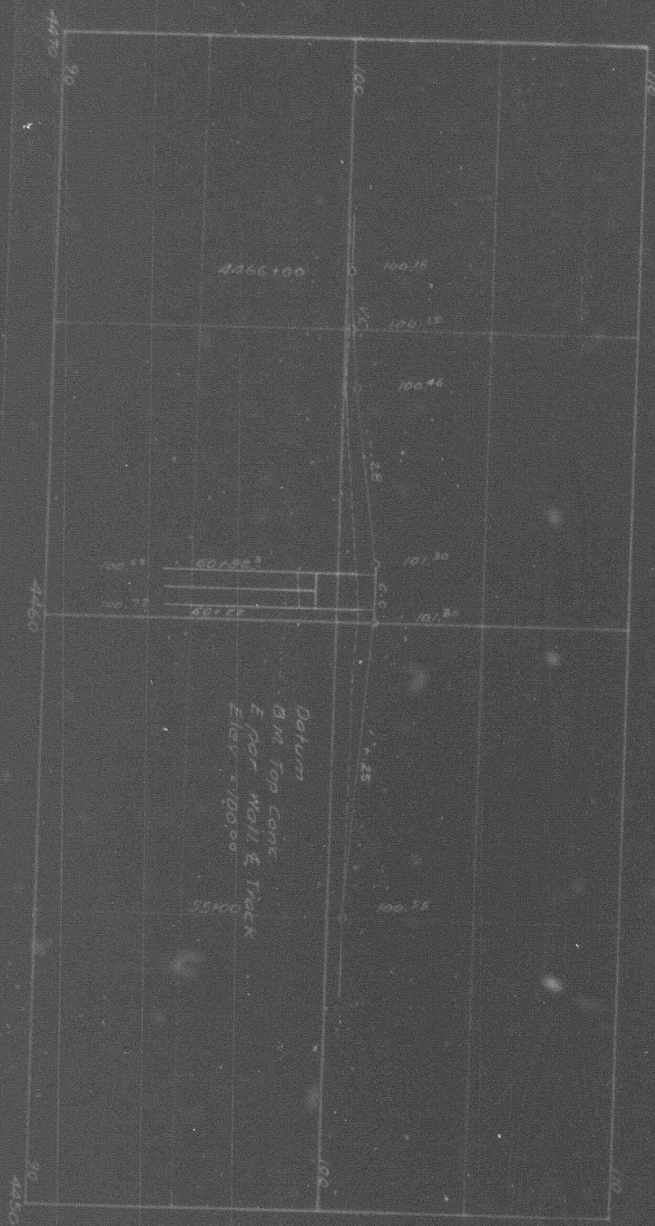


ELEVATION
Scale 1" = 10 ft.



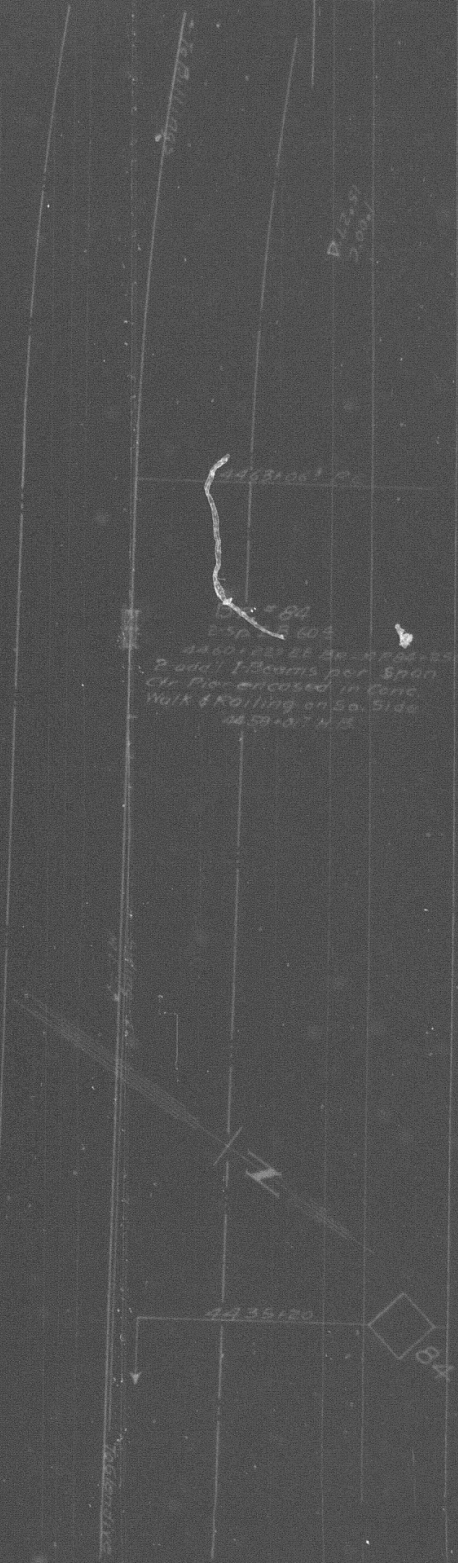
SECTION
Scale 1" = 1'-0"

NORTHERN PACIFIC RAILWAY
YELLOWSTONE DIVISION THIRD SUBDIVISION
Valuation Section Mont.
BRIDGE 84 NEAR ULMER, MONT.
PROPOSED REINFORCEMENT OF 30 FT 1 BEAM SPANS
SCALES AS NOTED
Office of Bridge Engineer St. Paul, Minn. Oct. 24, 1920



Datum
 Bm Top Curve
 E. Nor. Wall & Track
 Elev. 5720.00

443105' 00"
 1" 64
 2-50' x 2-40'
 2-40' x 2-25' AB - 4 Rods + 2-50'
 2-40' x 2-25' per Span
 Ch. Pie-encased in Conc.
 Walk & Rolling on So. Side
 100.59 + 0.7 H. 5



Bridges Reinforced for LSS loading
 For detail see Plans 172036 & 172038
 Office of an Engr. dated Jan. 17-1925

Yell. Riv. N.R.Y.
 Reinforce I-Beam Spans Bridge 84
 Near
 Uimer
 Scale 1" = 20'
 New Work Shown
 Removals
 Office of Dist. Engr. Livingston Mont. Jan. 24-1925
 Violation Section
 Built under Imp't. 12-107-29
 Work Begun Oct. 1922
 Work Completed Dec. 7-1925
 No. 1, N. 1
 12-26-29