



N. P. 1363
6-24

NORTHERN PACIFIC RAILWAY COMPANY

AUTHORITY FOR EXPENDITURE

COMPTROLLER'S COPY

SUPERINTENDENT'S NO.

M.F.C. No.

DEPT. NO.

ENGINEERING DEPT. NO.

YEAR **1929**

A. F. E. NO. **100**

Yellowstone Div **Third**

DISTRICT ~~XXXXXX~~ STATE **Montana** VAL. SEC. NO. **1**

AUTHORITY IS REQUESTED FOR A NET EXPENDITURE OF \$ **1 220.**

Accounting distribution as follows: (Distribution to be made in General Office)

	Operating Expenses	Profit and Loss	Net Operating Expenses	Net Profit and Loss
Cost of property retired	140.			
Value of salvage	10.		130.	
Incidental costs			240.	
Total to Operating Expenses				\$ 370. ✓
Total to Profit and Loss				
To Material and Supplies				10. ✓
To Bills for Collection				
To Other Accounts				
Net charge to investment account—Additions and Betterments				850. ✓
Total of distribution				\$1 230. ✓

Budget reference: **Item 122 — 1929 Budget**

Class of Work: No. **4**

Joint facility contract reference: **None**

The location is **-----** on this company's property. To secure rights, it will be necessary **to do nothing**

Location: **Near Tusler, Montana, Bridge 70-1**

Title: **Reinforce I Beam Span**

and

Reason: **The present structure consists of 1-30 foot I Beam Span on concrete abutments. The span is overloaded by class Q5 power and does not permit the operation of class "A" power. It is proposed to strengthen the spans by placing additional I Beams, making them good for 188½ ton loading.**



Work to be done by ~~contract~~ company force under charge of **Division Superintendent**

Accounting to concentrate in the office of **Division Superintendent**

Signature and Title: *[Signature]* **Bridge Engineer** Date **Oct. 11, 1928**

APPROVED		
General Superintendent	Asst. Chief Engr. or Engr. Maint. of Way	General Manager
Mch. Supt. Supt. Telgr. or Signal Engr.		
<i>[Signature]</i> Chief Engineer	<i>[Signature]</i> Vice President	
<i>[Signature]</i> For Comptroller	<i>[Signature]</i> President	Date of Final Approval 19

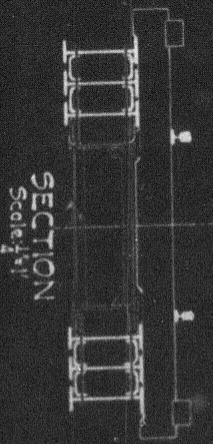
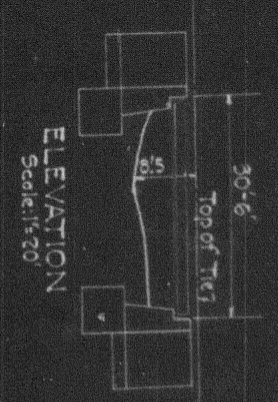
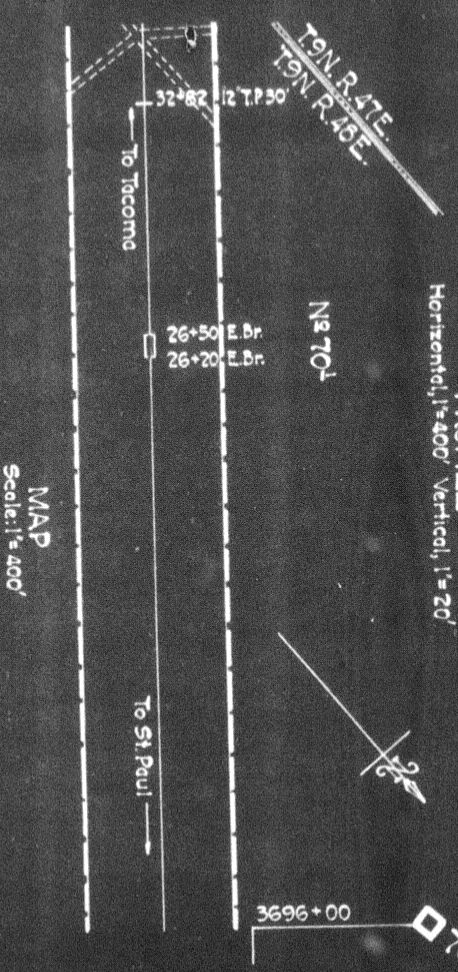
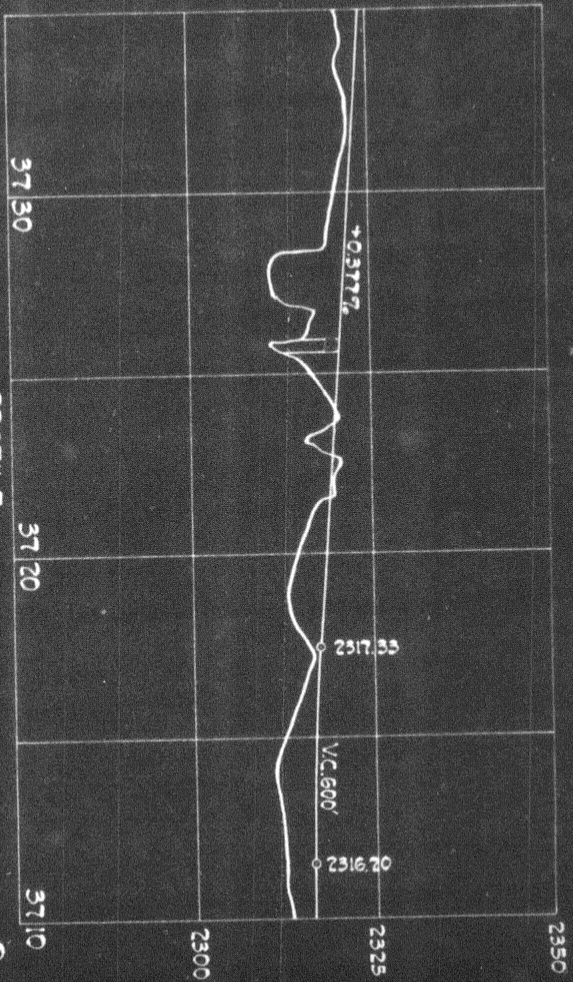
COMPTROLLER'S RECORD OF NOTICE OF APPROVAL AND OF COMPLETION

Form No. 1345 issued

19 Work begun

19 Work finished

Oct 16 '29



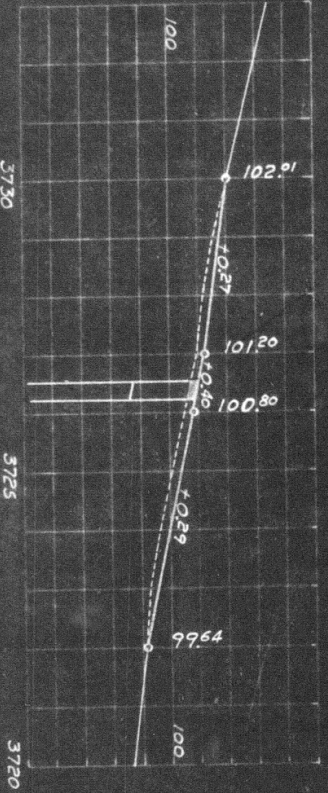
NORTHEAST PACIFIC RAILWAY
YELLOWSTONE DIVISION THIRD SUBDIVISION
Valuation Section Mont. 1

BRIDGE 701 NEAR TUSLER, MONT.
PROPOSED REINFORCEMENT OF 30 FT I BEAM SPAN

SCALES AS NOTED,
Office of Bridge Engineer St. Paul, Minn. Oct. 29, 1920
Proposed new work shown in red



BRIDGE reinforced with 2 odd I-Beams, seats remodeled etc. Work done as per Br. Engrs plans #63061 & #172029.



PROFILE
Scale: Hor. 1"=200'
Ver. 1"=4'



N.P. Ry. 3rd Dist.
Yell. Div.
Reinforce I-Beam span - Bridge No 701
near

TUSLER

Office of Dist. Engr. Livingston, Jan. 24, 1930.
New Work shown _____

Valuation Section Montana No 1
Auth. under Impt 106-29 dated 1-25-29
Work begun October 1929
Work completed October 18, 1929