



N. P. 1363  
6-24

NORTHERN PACIFIC RAILWAY COMPANY  
AUTHORITY FOR EXPENDITURE

COMPTROLLER'S COPY

YEAR 1929

SUPERINTENDENT'S NO.  
M.F.C. NO.

DEPT. NO.  
ENGINEERING DEPT. NO. 9

A. F. E. NO. 102

Yellowstone Div. Third

DISTRICT STATE Montana VAL. SEC. NO. 1

AUTHORITY IS REQUESTED FOR A NET EXPENDITURE OF \$ 1 750.

Accounting distribution as follows: (Distribution to be made in General Office.)

	Operating Expenses	Profit and Loss	Net Operating Expenses	Net Profit and Loss
Cost of property retired	140.			
Value of salvage	10.		130.	
Incidental costs			240.	
Total to Operating Expenses				\$ 370. ✓
Total to Profit and Loss				
To Material and Supplies				10. ✓
To Bills for Collection				
To Other Accounts				
Net charge to investment account—Additions and Betterments				1 380. ✓
Total of distribution				\$1 760. ✓

44  
Final 31

Budget reference: Item 122 1929 Budget

Class of Work: No. 4

Joint facility contract reference: None

The location is - - - on this company's property. To secure rights, it will be necessary to do nothing

Location: Bridge 54, near Benz, Montana

Title: Reinforce present 30 foot I Beam Span

and

Reason: The present bridge consists of one I Beam span, total length 30 feet, on concrete masonry. It was erected in 1902, is designed for Cooper's E-42 loading and is too light for modern engines. It is proposed to reinforce it to the standard E-65 loading by placing additional I Beams.

Total Cost Proposed Work \$1 750.  
Out of Pocket Expenditure 1 450.



Work to be done by company force under charge of Division Superintendent

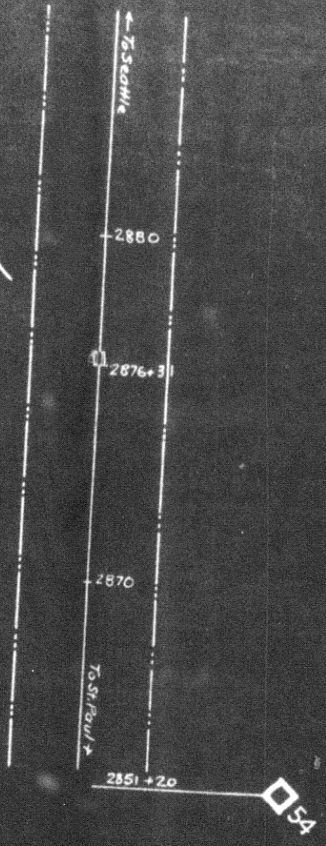
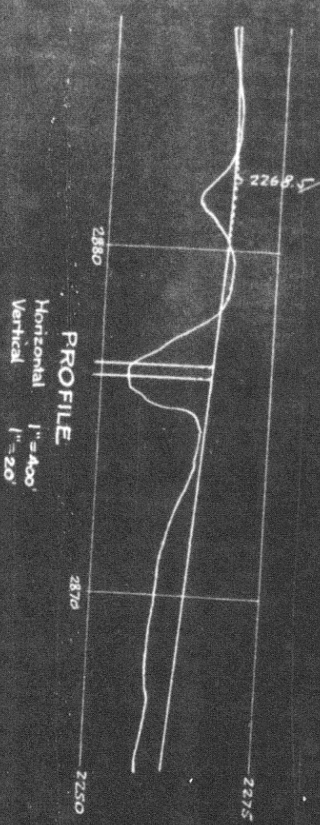
Accounting to concentrate in the office of Division Superintendent at Glendive

Signature and Title: [Signature] Bridge Engineer Date: Oct. 12, 1928

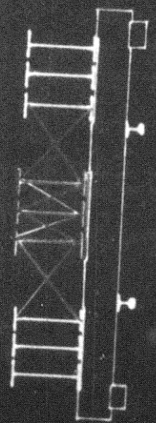
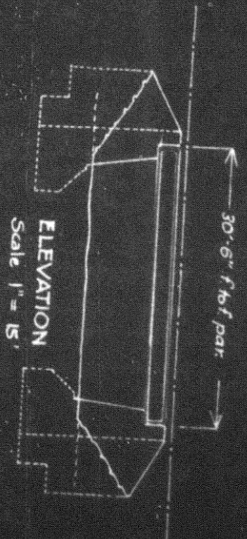
APPROVED:			
General Superintendent	Asst. Chief Engr. or Engr. Maint. of Way		General Manager
Mech. Supt., Supt. Telgh. or Signal Engr.			
[Signature] Chief Engineer		[Signature]	Vice President
[Signature] For Comptroller	[Signature]	Date of Final Approval	19 28

COMPTROLLER'S RECORD OF NOTICE OF APPROVAL AND OF COMPLETION

Form No. 1345 issued 19 Work begun 19 Work finished Sept 26 1929



Proposed new work shown in red.



NORTHERN PACIFIC RAILWAY  
YELLOWSTONE DIVISION  
THIRD SUBDIV.  
Valuation Section, Mont. 1

BRIDGE 54 NEAR BENZ, MONT.  
PROPOSED REINFORCEMENT OF 30 FT I BEAM SPAN

SCALES AS NOTED  
Office of Bridge Engineer, Saint Paul, Minn. Oct 12, 1928.

