



N. P. 1363  
6-24

# NORTHERN PACIFIC RAILWAY COMPANY

## AUTHORITY FOR EXPENDITURE

COMPTROLLER'S COPY

YEAR 1929

SUPERINTENDENT'S NO.

M.F.C. No.

DEPT. NO.

ENGINEERING DEPT. NO.

A. F. E. NO.

99

Yellowstone

Div.

Third

DISTRICT

STATE

Montana

VAL. SEC. NO. 1

AUTHORITY IS REQUESTED FOR A NET EXPENDITURE OF \$ 1 750.

Accounting distribution as follows: (Distribution to be made in General Office.)

	Operating Expenses	Profit and Loss	Net Operating Expenses	Net Profit and Loss
Cost of property retired	140.			
Value of salvage	10.		130.	
Incidental costs			240.	
Total to Operating Expenses				\$ 370.
Total to Profit and Loss				10.
To Material and Supplies				
To Bills for Collection				
To Other Accounts				
Net charge to investment account—Additions and Betterments				1 380.
Total of distribution				\$ 1 760.

4-4  
Revised  
31

Budget reference: Item 117-1929 Budget

Class of Work No. 4

Joint facility contract reference: None

The location is - - - - on this company's property. To secure rights, it will be necessary to do nothing

Location: Bridge 51-1, near Blatchford, Montana

Title: Reinforce present 30 foot I Beam Span

and

Reason: The present bridge consists of one I Beam span, total length 30 feet, on concrete masonry. It was erected in 1901, is designed for Cooper's E-42 loading and is too light for modern engines. It is proposed to reinforce it to the standard E-65 loading by placing additional I Beams.

Total Cost Proposed Work \$1 750.  
Out of Pocket Expenditure 1 450.

Work to be done by company force under charge of

Division Superintendent

Accounting to concentrate in the office of

Division Superintendent at Glendive

Signature and Title:

Bridge Engineer

Date Oct. 11, 1928

APPROVED:

General Superintendent	Asst. Chief Engr. or Engr. Maint. of Way	General Manager
Mech. Supt., Supl., Telg. or Signal Engr.		
Chief Engineer		Vice President
For Comptroller	President	Date of Final Approval



COMPTROLLER'S RECORD OF NOTICE OF APPROVAL AND OF COMPLETION

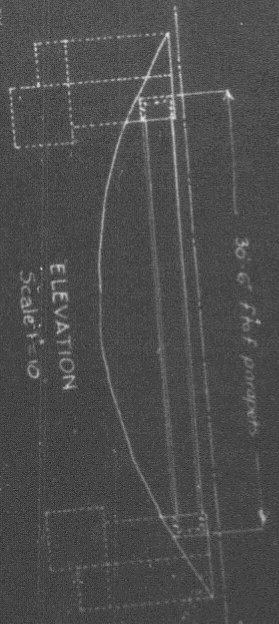
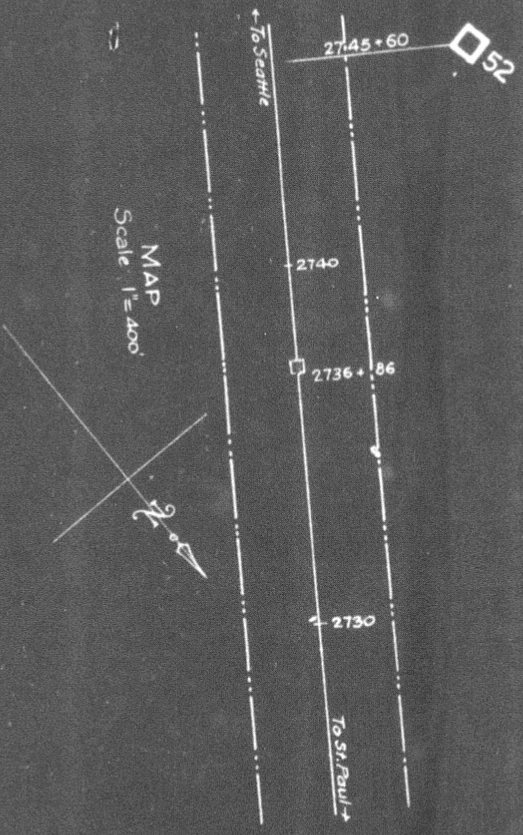
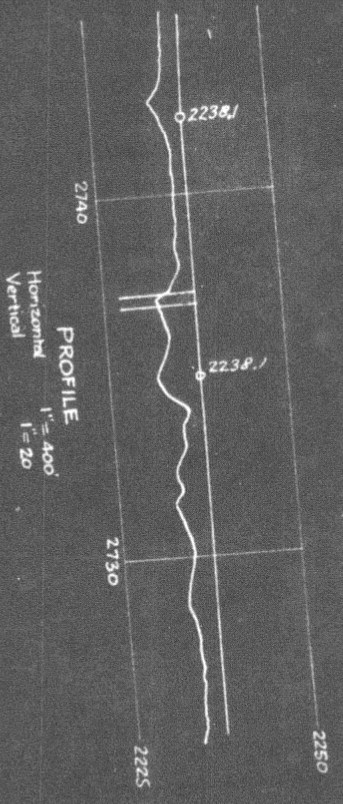
Form No. 1345 issued

Work begun

Work finished

Sept 23 29

Proposed new work shown in red.



NORTHERN PACIFIC RAILWAY  
 YELLOWSTONE DIVISION  
 Valuation Section Mont 1  
 TRIPID SUPPLY  
 BRIDGE 51-1 NEAR PLATFOED, MONT.  
 PROPOSED REINFORCEMENT OF 30 FT I BEAM SPAN

Office of Bridge Engineers, Saint Paul, Minn.  
 SCALES AS NOTED  
 Oct. 11, 1928

