



N. P. 1363  
6-24

# NORTHERN PACIFIC RAILWAY COMPANY AUTHORITY FOR EXPENDITURE

COMPTROLLER'S COPY

YEAR 1929

SUPERINTENDENT'S NO.

M.F.C. No.

DEPT. NO.

ENGINEERING DEPT. No. 4

A. F. E. No.

97

Yellowstone

Div.

Third

DISTRICT

STATE

Montana

VAL. SEC. No. 1

AUTHORITY IS REQUESTED FOR A NET EXPENDITURE OF \$ 1 750.

Accounting distribution as follows: (Distribution to be made in General Office.)

	Operating Expenses	Profit and Loss	Net Operating Expenses	Net Profit and Loss
Cost of property retired	\$ 140.		\$ 130.	
Value of salvage	10.		240.	
Incidental costs				\$ 370. ✓
Total to Operating Expenses				
Total to Profit and Loss				10. ✓
To Material and Supplies				
To Bills for Collection				
To Other Accounts				1 380. ✓
Net charge to investment account—Additions and Betterments				\$ 1 760. ✓
Total of distribution				

4-4-31  
Final

Budget reference: Item 122-1929 Budget

Class of Work: No. 4

Joint facility contract reference: None

The location is on this company's property. To secure rights, it will be necessary to do nothing

Location: Bridge 50 near Blatchford, Montana

Title: Reinforce present 30 foot I Beam Span

and

Reason:

The present bridge consists of one I Beam span, total length 30 feet, on concrete masonry. It was erected in 1900, is designed for Cooper's E-42 loading and is too light for modern engines. It is proposed to reinforce it to the Standard E-65 loading by placing additional I Beams.

Total Cost Proposed Work \$1 750.  
Out of Pocket Expenditure \$1 450.

Work to be done by company force under charge of Division Superintendent

Accounting to concentrate in the office of Division Superintendent

Signature and Title: *M. D. ...* Bridge Engineer

Date Oct. 11, 1928

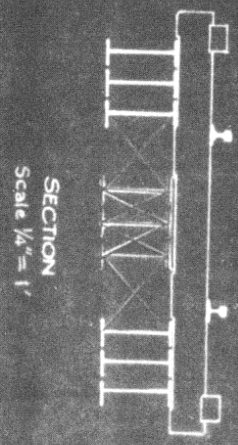
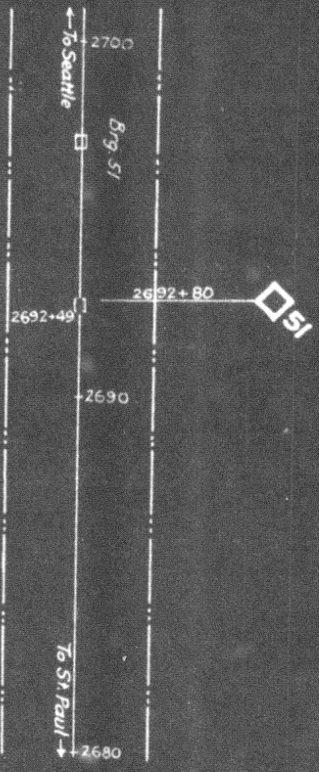
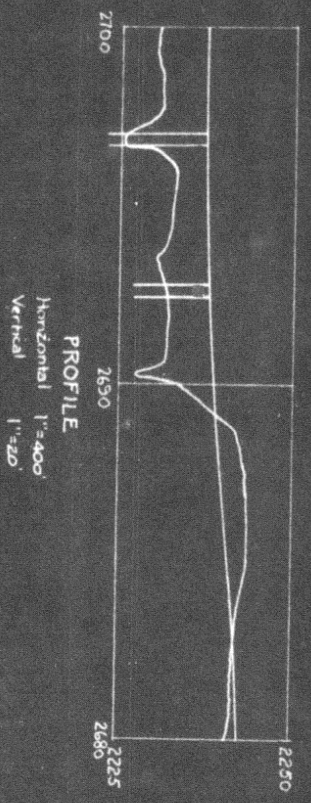
APPROVED:	General Superintendent	Asst. Chief Engr. or Engr. Maint. of Way	General Manager
	Mech. Supt., Supt. Telgh. or Signal Engr.		
	Chief Engineer		Vice President
	For Comptroller	President	Date of Final Approval

COMPTROLLER'S RECORD OF NOTICE OF APPROVAL AND OF COMPLETION

Sept 20 1929

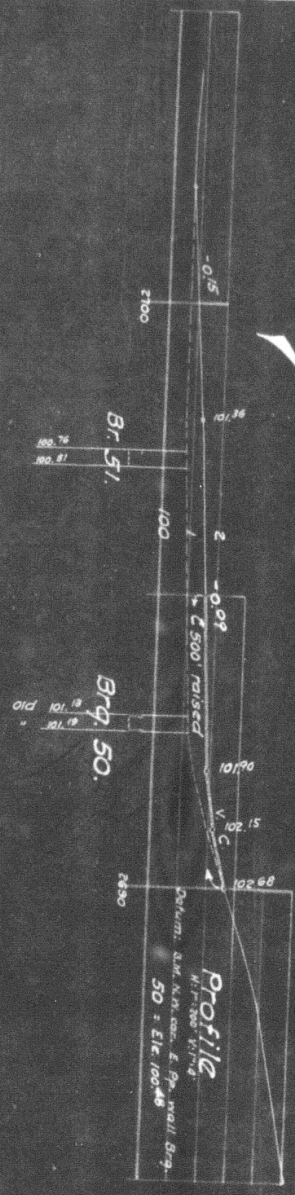
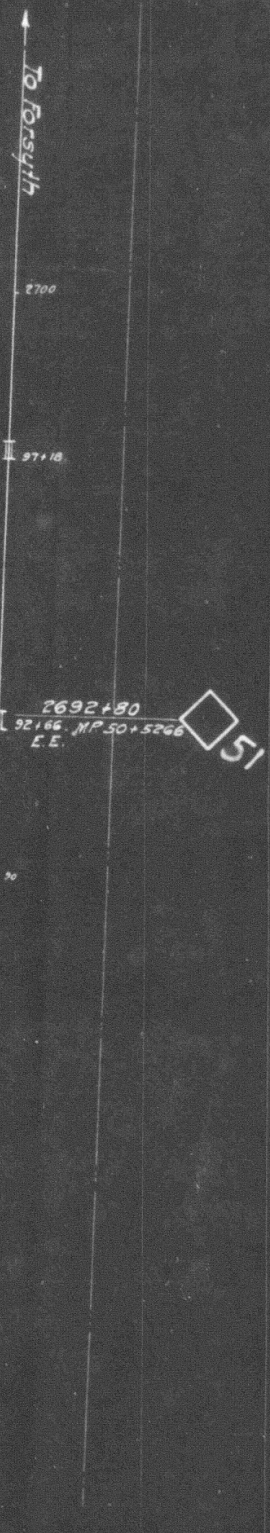
Proposed new work shown in red

1928



NORTHERN PACIFIC RAILWAY.  
YELLOWSTONE DIVISION. THIRD SUBDIV.  
Valuation Section Mont. I.  
BRIDGE 50 NEAR BLATCHFORD, MONT.  
PROPOSED REINFORCEMENT OF 30 FT. I BEAM SPAN

SCALES AS NOTED  
Office of Bridge Engineer, Saint Paul, Minn., Oct. 11, 1928



NOTE:  
 Brq. reinforced for E-65 loading per plan.  
 For details see B.E. plans No 63051  
 dated 11.30.28, and No 172036 dated  
 10.28.28.

Yell. Div. N.P.R.Y.  
 3rd Dist  
 Reinforce I-beam span  
 Bridge No 50  
 BLATCHFORD  
 11800'

Office of Dist Engineer, Livingston, July 24, 1929  
 Work completed  
 Vol. Sec. Under Imp't 97-29  
 Work begun date 12-29-29  
 Work completed date 20, 1929