



N. P. 1363  
6-24

NORTHERN PACIFIC RAILWAY COMPANY  
AUTHORITY FOR EXPENDITURE

COMPTROLLER'S COPY

1929/1929  
YEAR 1929

SUPERINTENDENT'S NO.

M.F.C. No.

1929

DEPT. No.

ENGINEERING DEPT. No. 4

A. F. E. NO. 92

Fargo

Div. Second

DISTRICT ~~Branch~~ STATE No. Dak. VAL. SEC. No. 1

AUTHORITY IS REQUESTED FOR A NET EXPENDITURE OF \$ 1 910.

Accounting distribution as follows: (Distribution to be made in General Office.)

	Operating Expenses	Profit and Loss	Net Operating Expenses	Net Profit and Loss
Cost of property retired	\$ 200.	\$	\$	\$
Value of salvage	20.		180.	
Incidental costs			330.	
Total to Operating Expenses				\$ 510. ✓
Total to Profit and Loss				
To Material and Supplies				20. ✓
To Bills for Collection				
To Other Accounts				
Net charge to investment account—Additions and Betterments				1 400. ✓
Total of distribution				\$ 1 930. ✓

Original Cost Adjustment  
Made in 11-4-30  
Fame

Budget reference: Item 108 - 1929 Budget

Class of Work: No. 4 ✓

Joint facility contract reference: None

The location is --- on this company's property. To secure rights, it will be necessary to do nothing

Location: Near Norpak, North Dakota, Bridge 23.

Title Reinforce I Beam Spans

and

Reason: The present structure consists of 2-30 foot I Beam Spans on concrete masonry for double track. The spans on the west bound track are too light for class Q5 power and do not permit the operation of Class "A" power. It is proposed to strengthen the spans on the west bound track by placing additional second hand beams from Bridge 13-1 Fargo Division, making them good for 188 1/2 ton loading.

Work to be done by company force under charge of **Division Superintendent**

Accounting to concentrate in the office of **Division Superintendent**

Checked and Entered  
President's Office



Signature and Title:

*M. B. Clements*

**Bridge Engineer**

Date **Oct. 9, 1928**

APPROVED:

General Superintendent. Asst. Chief Engr. or Engr. Maint. of Way. General Manager.

Mech. Supt., Supt. Telgr. or Signal Engr.

*Demad Blum*  
Chief Engineer.

*[Signature]*  
Vice President.

*[Signature]*  
For Comptroller.

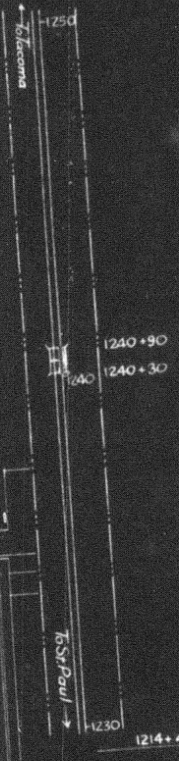
*Charles Somerville*  
President

Date of Final Approval { **JAN 26 1929** 19.

COMPTROLLER'S RECORD OF NOTICE OF APPROVAL AND OF COMPLETION

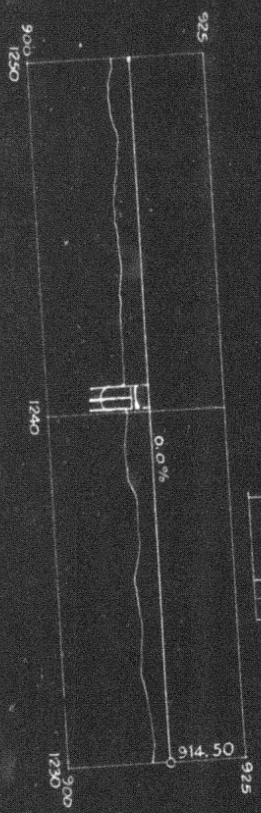
Form No. 1345 issued. 19. Work begun. 19. Work finished *11-29-30*

**MAP**  
Scale 1" = 400'

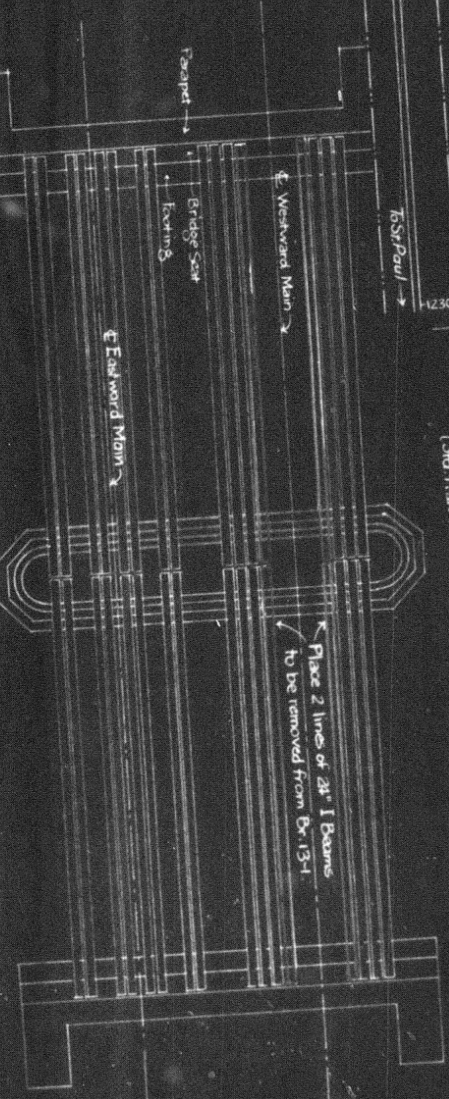


**PROFILE**

Horizontal scale 1" = 400'  
Vertical scale 1" = 20'



**PLAN**  
Scale 1" = 10'



Bridge on westward main was built in 1901 for 140-ton loading  
(Std Plan R-10-304)  
Bridge on eastward main was built in 1906 for 188.5-ton loading  
(Std Plan R-10-1005A)

N. P. RY  
FARGO DIVISION SECOND SUBDIVISION  
**NORPAK**  
BRIDGE 23  
REINFORCE I BEAM SPANS  
SCALES AS NOTED  
Office of Bridge Engineer, St. Paul, Minn., Oct. 9, 1928  
Proposed New Work  
Proposed Retirements  
VALUATION SECTION NORTH DAKOTA #1.