



N. P. 1363
6-24

COMPTROLLER'S COPY

NORTHERN PACIFIC RAILWAY COMPANY

AUTHORITY FOR EXPENDITURE

1929

1929 1929
YEAR 1929

SUPERINTENDENT'S NO.

M.F.C. No.

DEPT. No.

ENGINEERING DEPT. No. 2

A. F. E. No.

90

Fargo

DIV.

Second

DISTRICT
BRANCH

STATE

No. Dak.

VAL. SEC. No. 1

AUTHORITY IS REQUESTED FOR A NET EXPENDITURE OF \$ 4 710.

Accounting distribution as follows: (Distribution to be made in General Office.)

	Operating Expenses	Profit and Loss	Net Operating Expenses	Net Profit and Loss
Cost of property retired	\$ 3 210.	\$	\$	\$
Value of salvage	2 730.		480.	
Incidental costs			3 330.	
Total to Operating Expenses				\$ 3 810.
Total to Profit and Loss				
To Material and Supplies				2 730.
To Bills for Collection				
To Other Accounts				
Net charge to investment account—Additions and Betterments				900.
Total of distribution				\$ 7 440.

Original Cost Adjustment
Made in 4-14-1931
Final

Budget reference: Item 108-1929 Budget

Class of Work: No. 4

Joint facility contract reference: None

The location is on this company's property. To secure rights, it will be necessary to do nothing.

Location: Near West Fargo, North Dakota - Bridge 13-1, Drainage Ditch.

Title: Rearrange I Beam Spans.

and

Reason: The present structure consists of 6-30 foot I Beams for double track, on concrete masonry. The beams on the west bound track are too light for Class "A" engines and it is proposed to shorten the bridge by filling three spans and using the extra beams to strengthen the remaining spans. This is made possible by a lowering of the drainage ditch, which was done by the local authorities making a long bridge unnecessary. Beams will also be salvaged for use at other bridges on the Fargo Division.

Work to be done by company force under charge of Division Superintendent

Accounting to concentrate in the office of Division Superintendent

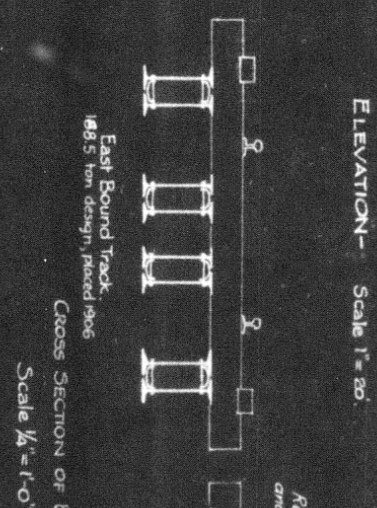
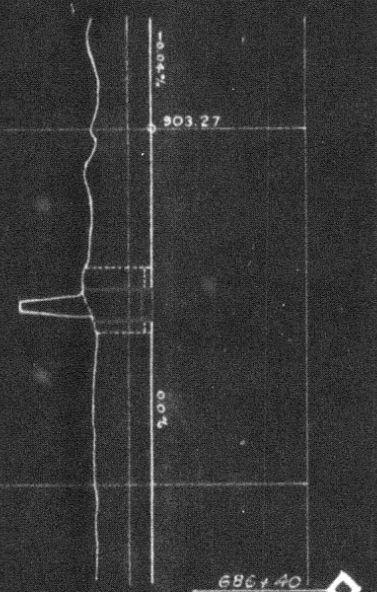
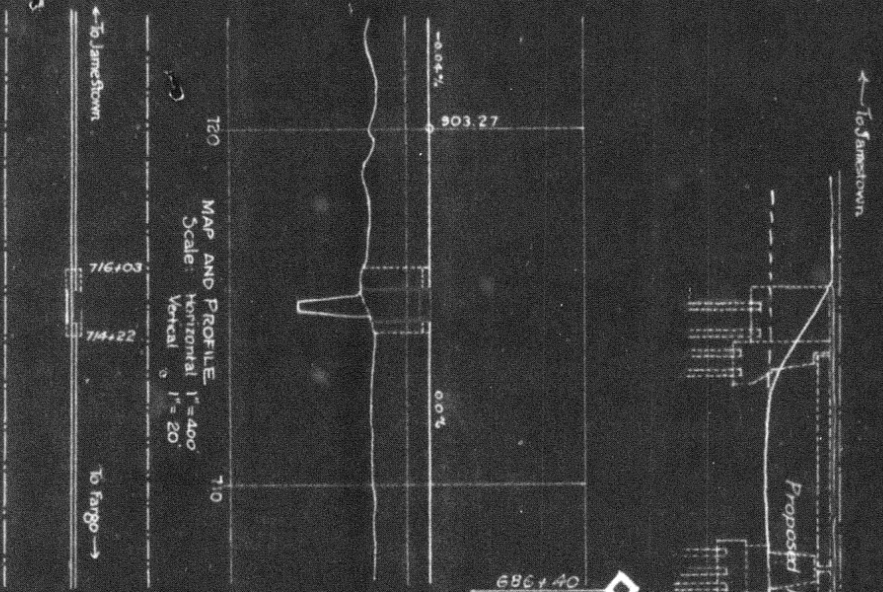
Signature and Title: *Frank Clements* Bridge Engineer Date Sept. 26, 1928



APPROVED:			
	General Superintendent.	Asst. Chief Engr. or Engr. Maint. of Way.	General Manager.
	Mech. Supl., Supl. Telph. or Signal Engr.		
	<i>Demas Wilson</i> Chief Engineer.		<i>W. A. ...</i> Vice President.
	<i>W. ...</i> For Comptroller.	<i>Charles Tompkins</i> President.	Date of Final Approval { JAN 20 1929

COMPTROLLER'S RECORD OF NOTICE OF APPROVAL AND OF COMPLETION

Form No. 1345 Jan 23 19 Work begun 19 Work finished May 7 19



Remove 3 spans from filled part of East Bound and place in West Bound bridge.

Office of Bridge Engineer, St. Paul, Minn., Sept. 26, 1928
 Proposed new work: _____
 Proposed retirement: _____
 Valuation Section North, Dakota No. 1

N. P. RY
 FARGO DIVISION SECOND SUBDIVISION
WEST FARGO
 BRIDGE 13-1, DRAINAGE DITCH,
 REARRANGE I-BEAM SPANS.
 SCALES AS NOTED.