



N. P. 1363  
6-24

NORTHERN PACIFIC RAILWAY COMPANY  
AUTHORITY FOR EXPENDITURE

COMPTROLLER'S COPY

SUPERINTENDENT'S No. 88  
No. 1929

DEPT. No. 10  
ENGINEERING DEPT. No. 104

1929  
YEAR 1929

A. F. E. No. 89

St. Paul Div. Main Line

DISTRICT STATE Minn.  
BRANCH

VAL. SEC. No. 9

AUTHORITY IS REQUESTED FOR A NET EXPENDITURE OF \$709.

Accounting distribution as follows: (Distribution to be made in General Office.)

	Operating Expenses	Profit and Loss	Net Operating Expenses	Net Profit and Loss
Cost of property retired.....	70			
Value of salvage .....			70	
Incidental costs .....			54	
Total to Operating Expenses .....				\$ 124 ✓
Total to Profit and Loss .....				
To Material and Supplies .....				
To Bills for Collection .....				
To Other Accounts .....				
Net charge to investment account—Additions and Betterments .....				585 ✓
Total of distribution .....				\$ 709 ✓

Original Cost Adjustment  
Made in 5-21-1930  
Final

Budget reference: ~~Not In Budget~~ Item 407, 1929

Class of Works No. 17 ✓

Joint facility contract reference: Not Joint Account

The location is ----- on this company's property. To secure rights, it will be necessary Nothing

Location: St. Cloud, Minn.

Title Proposed Driveway and Removal of Electric Light Poles.

and

Reason:

With the locating of the International Harvester Company's new warehouse and office, on leased right of way, facing St. Germaine Street just South of our Passenger Station, it is necessary to provide an adequate driveway along the Harvester Company's Warehouse, leading from the street to permit of trucks getting to the warehouse doors and not interfere with the driveway to and from the Passenger Station, and to other industries back of the depot.

To provide this driveway it is proposed to move the two electric light poles carrying current to the Passenger Station and fill in the low ground between the present driveway to the depot and the Harvester Company's building, and bring the current for lighting the station in from a pole located in front of, and across the tracks from the Station.

It is recommended the work be done.

Work to be done by company force under charge of Superintendent

Accounting to concentrate in the office of Division Accountant

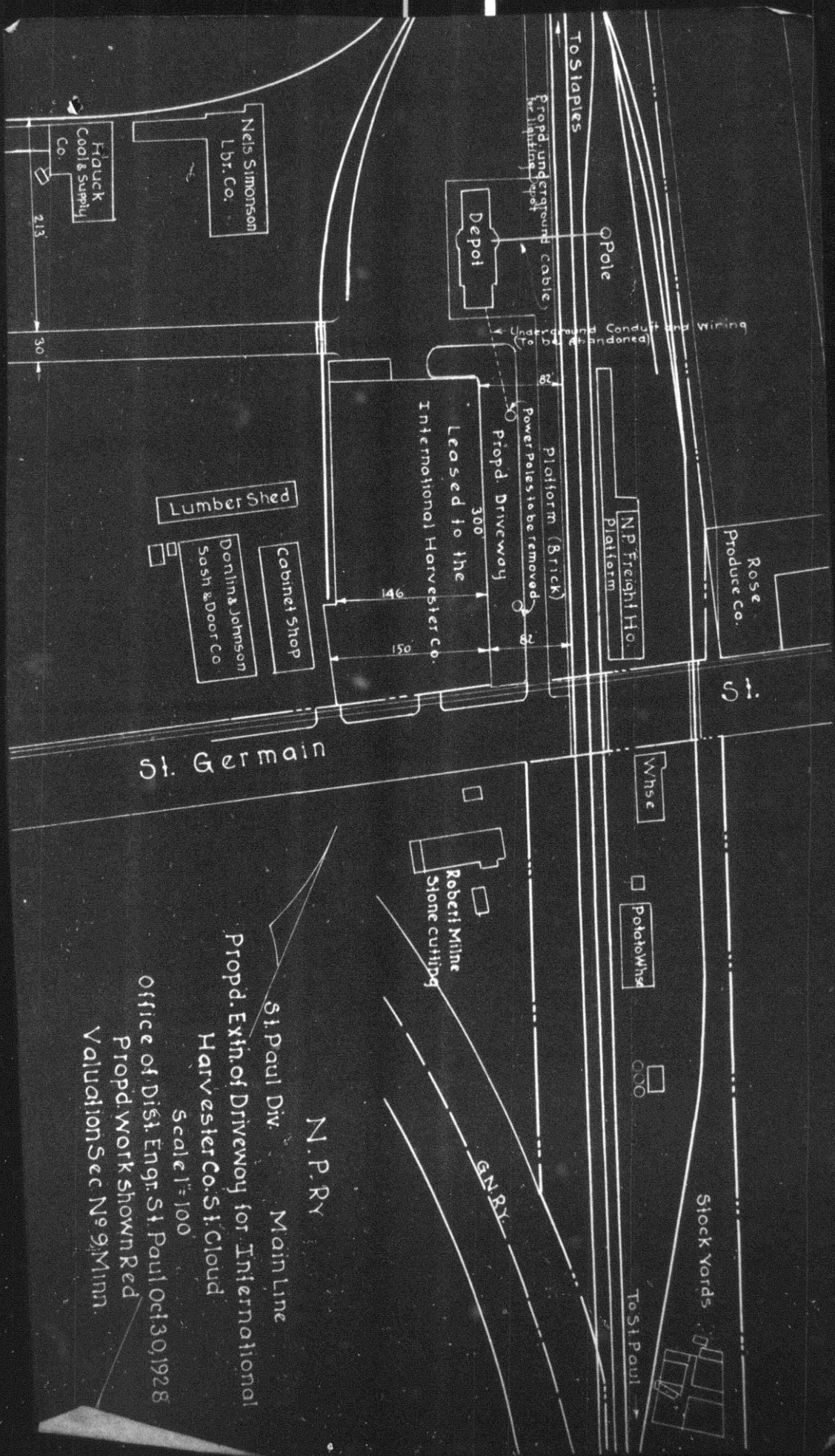
Signature and Title: *[Signature]* Superintendent Date Nov. 13th 1928

APPROVED <i>[Signature]</i> General Superintendent.	<i>[Signature]</i> Asst. Chief Engr. - Engr. Maint. of Way.	<i>[Signature]</i> General Manager.
<i>[Signature]</i> Mech. Supt., Supt. Telgh. or Signal Engr.	<i>[Signature]</i> Chief Engineer	<i>[Signature]</i> Vice President.
<i>[Signature]</i> For Comptroller.	<i>[Signature]</i> President	Date of Final Approval JAN 26 1929

COMPTROLLER'S RECORD OF NOTICE OF APPROVAL AND OF COMPLETION

1345 issued ..... 19 ..... Work begun ..... 19 ..... Work finished 6-26-29





N.P. RY  
 Main Line  
 St. Paul Div.  
 Propd. Extn. of Driveway for International  
 Harvester Co. St. Cloud  
 Scale 1" = 100'  
 Office of Dist. Engr. St. Paul Oct 30, 1928  
 Propd. work shown Red  
 Valuation Sec No 9, Minn.