



N. P. 1929
8-24

NORTHERN PACIFIC RAILWAY COMPANY AUTHORITY FOR EXPENDITURE

COMPTROLLER'S COPY

1929

1929 1929

SUPERINTENDENT'S No. 27
No.

DEPT. No.
ENGINEERING DEPT. No. 25

A. F. E. NO. 86

Montana Div. Second

DISTRICT STATE Montana VAL. SEC. No. 4

AUTHORITY IS REQUESTED FOR A NET EXPENDITURE OF \$ 11826.00

Accounting distribution as follows: (Distribution to be made in General Office.)

	Operating Expenses	Profit and Loss	Net Operating Expenses	Net Profit and Loss
Cost of property retired.....	11934			
Value of salvage.....	6521		5413	
Incidental costs.....			2732	
Total to Operating Expenses				8145 ✓
Total to Profit and Loss				6521 ✓
To Material and Supplies.....				
To Bills for Collection.....				
To Other Accounts.....				
Not charge to investment account—Additions and Betterments.....				3681 ✓
Total of distribution				18347 ✓

*COST AT CURRENT ADJUSTMENT
MADE IN 19*

Budget reference: Item 72 Original Cost Adjustment
Made in 1-29 1931 Class of Work: No. 3 ✓
Final

Joint facility contract reference: Not Joint.

The location is _____ on this company's property. To secure rights, it will be necessary

Location: Between Placer and Helena.

Title Relay Main Line MP 236 plus 3160 to 237 plus 4674.

Reason:

90# rail in track at this point is wearing fast and joints are battered and should be replaced this season with 100# R.E. rail as per Engineering Department program.

It is therefore recommended that work be done as per attached blue print and estimate.

See AFE #26.

Work to be done by company force under charge of Superintendent.

Checked and Retained
President's Office



Accounting to concentrate in the office of Superintendent.

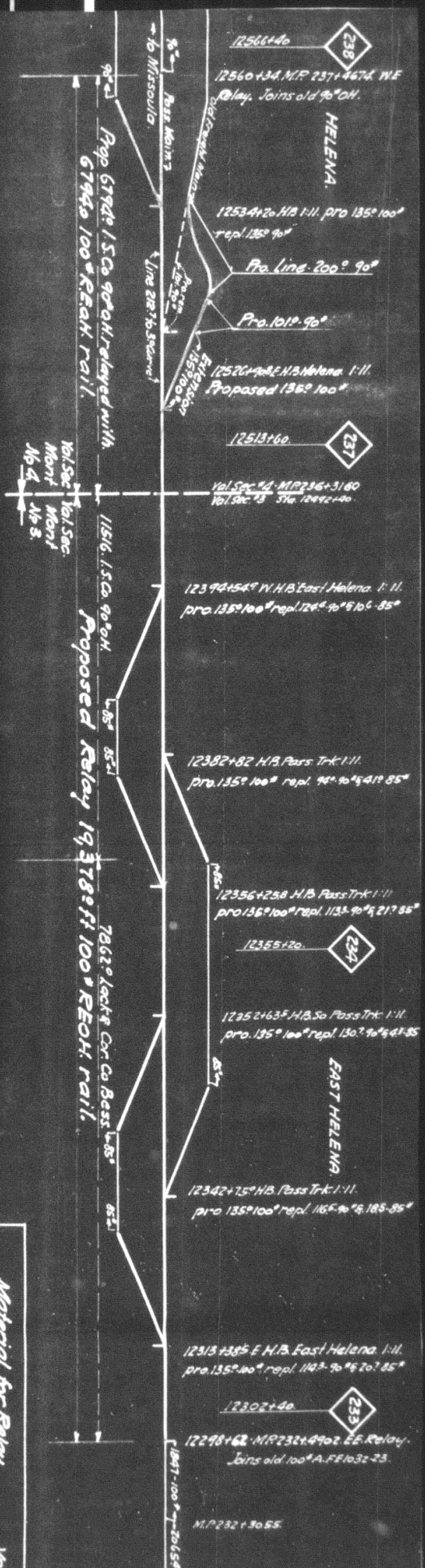
Signature and Title: *Paul D. ...* Superintendent. Date Dec. 16 1929

PROVED: <i>...</i> General Superintendent.	<i>...</i> Asst. Chief Engr. in Charge, District of Mont.	<i>...</i> General Manager.
<i>...</i> Mech. Supt., Supt. Telegraph or Signal Engr.	<i>...</i> Chief Engineer.	<i>...</i> Vice President.
<i>...</i> For Comptroller.	<i>...</i> President.	Date of Final Approval { JAN 2 1930 }

COMPTROLLER'S RECORD OF NOTICE OF APPROVAL AND OF COMPLETION

Form No. 1345 issued _____ 19 _____ Work begun _____ 19 _____ Work finished April 23 1929

Prop. to make passenger main thru. trk. lining
212 ft. to a square. PT of Sta. 264485 Freight
main H.B. at Sta. 26658 1611 S.R. turnout.
135° 100' Extension to 90° S line 200 ft to 15th chs.

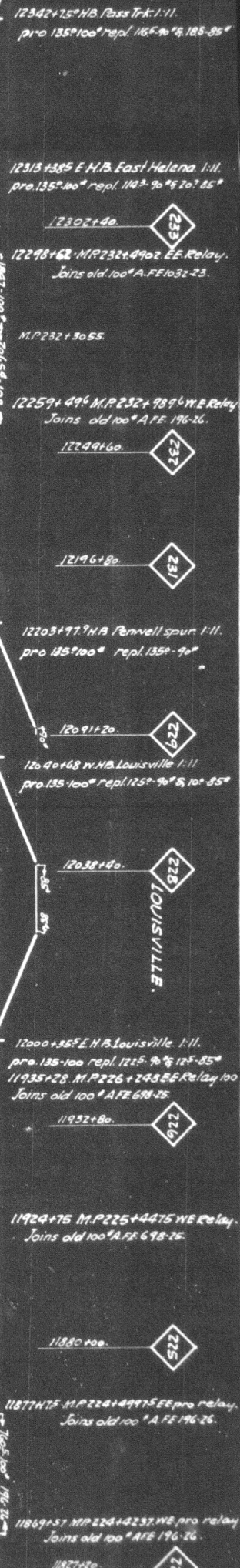


Material for Relay	Vol.
Lin ft 100' Rail	134
Lin ft 90' Rail	
Fs. 100' Angle Bars	3
Pts. 90'	
Pts. 100' 90' Comp Joints	
Fs. 100' 85'	
Pts. 100' Bolts with nut locks	136
Pts. 90'	
Pts. 85'	
Pts. 100' Tie Plates	84
Pts. 90'	
Pts. 100' Rail Anchors	57.4
Lbs Tractspikes	
100' No 11 S.R. Turnouts	62

M.P. 232+3055

	Vol. Sec #3	Vol. Sec #4
Lin #100° Rail	134,206.2	13,948
Lin #1 90° Rail	0	202
Fts 100° Angle Bars	3,443	348
Fts 90°	0	4
Fts 100° 4 90° Comp. Joints	4	6
Fts 100° 85°	16	0
Fts 100° Bolts with nut locks	1381.2	1,404
Fts 90°	8	28
Fts 85°	32	0
Fts 100° Tie Plates	84,482	7,940
Fts 90° Rail Anchors	0	195
Fts 90°	37,440	2,480
Lbs Trackspikes	62,222	6,765
Lbs No 11 S.P. Turnouts	9	2

Proposed 382321 Lacks Car Co Pass relayed with
382321-100° R.E. ON Rail.



N.P.R.
 Drawing No. 2
 Work on Div.
 Proposed Relay of Main Line. Replace
 with 100° R.E. Rail.
 MP 223+924 & 237+467
 between
 Placer and Helena
 No. Scale
 Office of Dist. Engr. Livingston, Mont.
 Proposed New Work Show
 Proposed New Locations -
 Valuation Section. Mont.
 1929 Budget Item.

13	62	13,988	Val Sec #4.
0	202	202	
3	348	348	
2	4	4	
1	6	6	
0	0	0	
1	1,404	1,404	
2	28	28	
3	0	0	
4	7,920	7,920	
5	135	135	
6	2,880	2,880	
7	0	0	
8	6,765	6,765	
9	2	2	

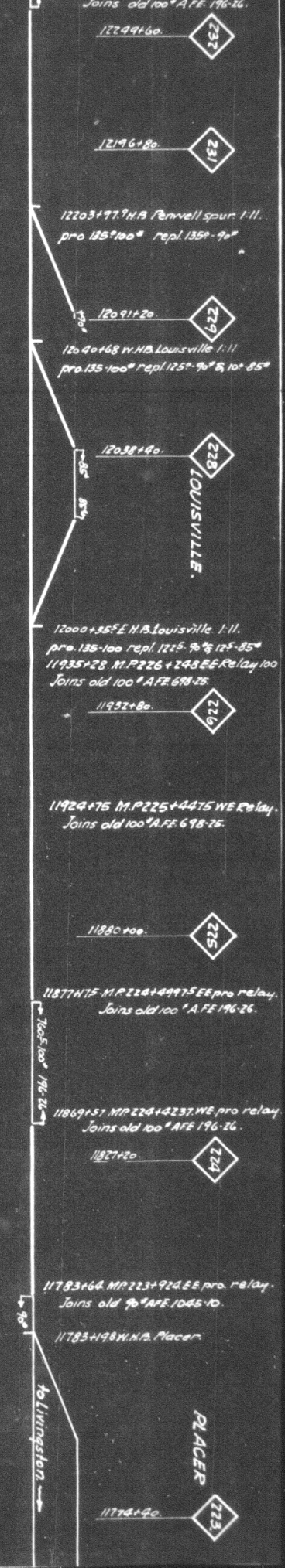
Proposed 382321 lacks Car Co Bess relayed with
382321-100 R.E. OH Rail.

Office of Dist. Engr. Livingston, Mont. Dec. 15th, 1928.
Proposed New Work - Show? --- Removals: ---
Valuation Section Mont. Nos 3, 4.
1929 Budget Item.

Placer 2nd Helena.
No Scale

Proposed Relay of Main Line. Replacing 90° Bess OH rail
with 100° R.E. Rail.
MP 223+924 S 257+467A
between.

Montana Div.
Drawing No
N.P.R.Y.
2nd District



Livingston

PLACER

237

12513+00

12500

M.L. relay (100#)
1st - 275 - OH. IS. (54629) → 1st - 1st - O.H. ISCO (13072)

12505+47. M.P. 236+4467

12550

12540

Yard

OLD MAIN LINE I

Tracks

12448 - 728

1933 - 724

4462 - 85 H

Ice

Houses

12590

Former L. of Old M.L. (Freight Main) 8200.5
Extension 149.5
Pres. Length 8410.0

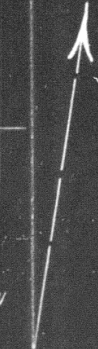
36+629 H.B.
36+422 D.R.

237



12513+60

12515+00



M.L. relay (100#)

1251-270 - O.H. IS. (46622) - 1251-121 - O.H. ISCO. (1307.0)

12505+47, M.P. 236+4467

W.E. 100# relay on
Opp. M.L. sta. 12560+076
N.P. 237+46476

Yard

OLD MAIN LINE

Track

1248-72

TO MISSOURI

30# 100#

1993-72

Houses

Ice

12513+90

Former L. of Old M.
Extension
Pres. Length