



N. P. 1363
6-24

NORTHERN PACIFIC RAILWAY COMPANY
AUTHORITY FOR EXPENDITURE

COMPTROLLER'S COPY

1929 1929
YEAR 1929

SUPERINTENDENT'S No. 22.
No.

DEPT. No.
ENGINEERING DEPT. No. 41

A. F. E. No. 72

YELLOWSTONE Div. FIRST

DISTRICT STATE NO. DAK. VAL. SEC. No. 2.

AUTHORITY IS REQUESTED FOR A NET EXPENDITURE OF \$ 103376.00.

Accounting distribution as follows: (Distribution to be made in General Office.)

	Operating Expenses	Profit and Loss	Net Operating Expenses	Net Profit and Loss
Cost of property retired	\$ 119016	0		
Value of salvage	64532		54684	
Incidental costs			22868	
Total to Operating Expenses	Original Cost Adjustment			\$ 77552
Total to Profit and Loss	6-24 30			
To Material and Supplies	Final			64332
To Bills for Collection				
To Other Accounts				
Net charge to investment account—Additions and Betterments				25824
Total of distribution				\$ 167708

Budget reference: 1929 Budget Item #66.
Signal work involved.

Class of Work: No. 3

Joint facility contract reference: Not Joint account.

The location is --- on this company's property. To secure rights, it will be necessary to do nothing.

Location: Between Hebron & Richardton.

Title and Reason: Estimated cost proposed relaying of Main Line, replacing 90# O.H. rail with 100# R.E. rail from MP 70+5278 to MP 84+1326, as per sketch dated December 15, 1928

The 90# rail in main track at this location was laid in 1909. It is getting badly worn and unfit for main line service and it is recommended that in accordance with our program it be relaid in 1929 with 100# rail. It is understood that the 90# rail recovered can be used to advantage in side track and branch line work.

Work to be done by company force under charge of ~~XXXXXX~~ Division Superintendent.

Accounting to concentrate in the office of Division Accountant.

Checked and Entered
President's Office

Signature and Title: *P. T. Taylor* Superintendent. Date Dec. 31, 1928

<i>May</i> General Superintendent.	<i>J. H. ...</i> Asst. Chief Engr. or Engr. Maint. of Way.	<i>H. ...</i> General Manager.
<i>Dennis ...</i> Chief Engineer.		<i>A. ...</i> Vice President.
<i>A. ...</i> For Comptroller.	<i>Charles Hornelly</i> President	Date of Final Approval { JAN 24 1929 } 1929

COMPTROLLER'S RECORD OF NOTICE OF APPROVAL AND OF COMPLETION


Form No. 1345 issued 19. Work begun 19. Work finished Oct 18 29

To Dig-
KINSON
1
old 100#


4466+128 E.H.B. "Richard'n"

4462+75. 84+2755. 24" C.I.P.

4448+46. M.P. 84+1326. W.E.
prop'd new 100# relay to
join EE. old - AFE. 302-26.

4435+20  84

Prop'd 30,900 Tr-K. Ft. new 100# relay replcg. 90# O.H.

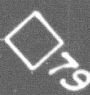
4224+00  80

4220+94. W.H.B. Ld. 845 Prop'd 135°
100# 1:11 R.T.O. replcg.
110. 90# 6 249-85#

Antelope



4179+168 E.H.B. Ld. 845 Prop'd 135°
100# 1:11 S.R.T.O. replcg.
345-90# 6 405-85#


4171+20  79

4139+46. M.P. 78+2106. EE.
prop'd new 100# to join W.E.
old - AFE. 691-25.

4129+12. M.P. 78+1072. WE.
prop'd new 100# to join EE.
old - 691-25.

L-1034° old

0294 T.F. 100# replcg
90# - O.H.

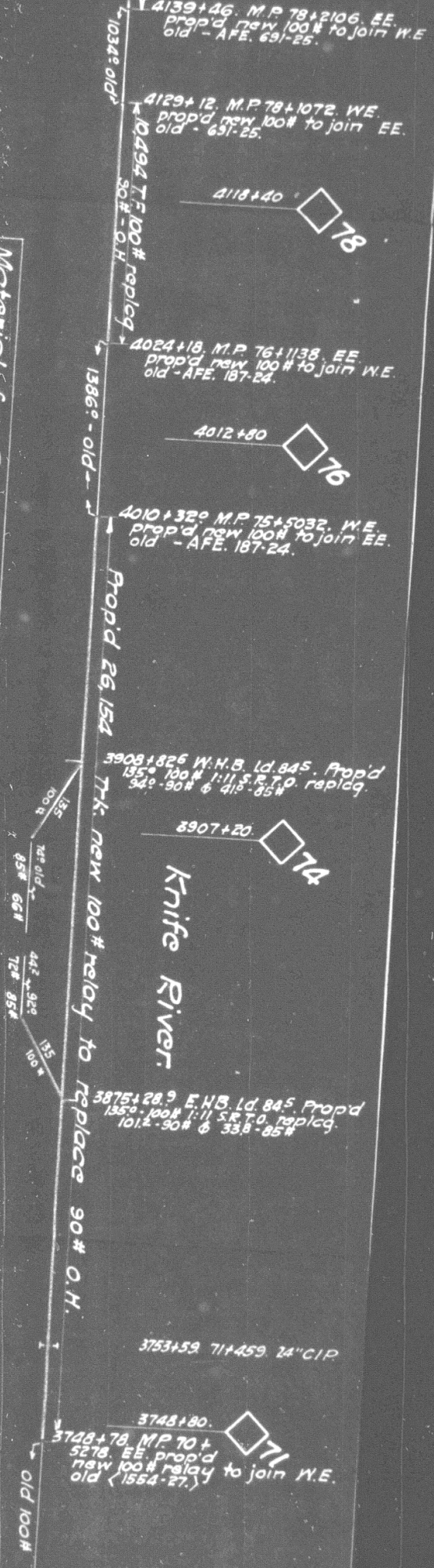
4118+40  78

4024+18. M.P. 76+1138. EE.
prop'd new 100# to join W.E.
old - AFE. 187-24.

1386

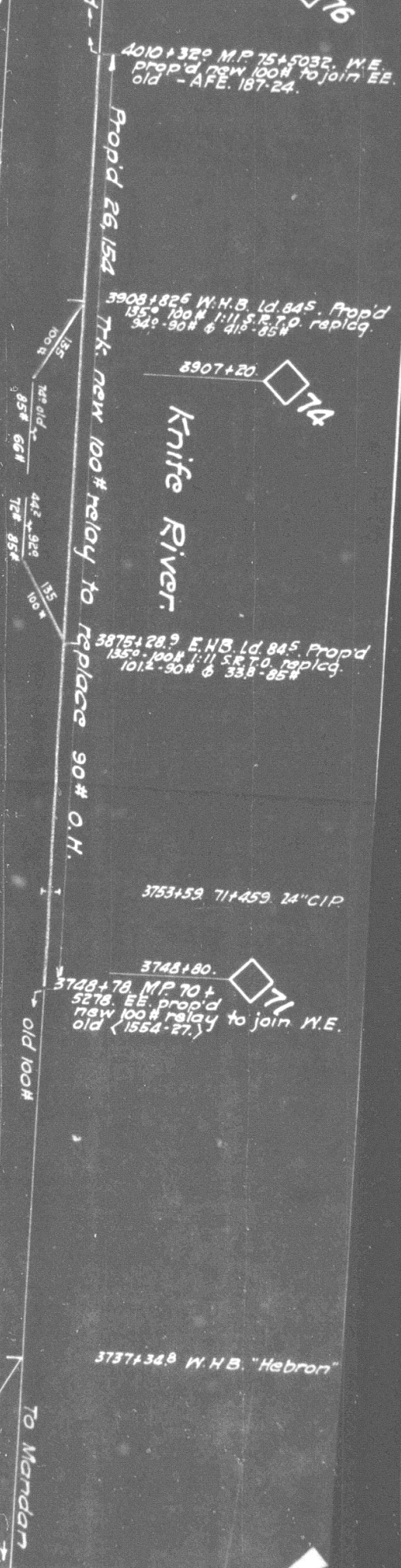
Material	
Ltr. Ft.	100# Tr
Pairs	" "
Pcs.	" "
"	85#
"	bo
"	100# Tr
Lbs.	spikes
100#	1:11 S.R.

Material for Relay	
Lin. Ft. 100# rail	135896
Pairs " angle bars	3490
Pcs. " x 85# compr. jnts	8
" 85# bolts with nut locks	13976
" 100# tie plates	16
" 100# rail anchors	78055
Lbs. spikes	34640
100# 1:11 S.R.T.O.'s complete	98280
	4



Office Dist. Engineer
 Proposed relay
 30W.O.H. with 100# rail
 M.P. 70
 Hebror
 Y'all Div
 192

relay	
bars	13 5896
comp. jnts.	3490
with nut locks	8
keys	13976
anchors	16
	78055
	34640
	98280
complete	4



Knife River

Hebron & Richardson

Office Dist. Engineer, Livingston, Dec. 15, 1928
 Prop'd new work shown N.D. No. 2
 Vol. Sec. 1929 Budget Item

Proposed Relaying of Main Line replacing
 50# O.H. with 100# E.E. rail, Sta. 3768+78 to 376+448+46,
 M.P. 70+5278 - 84+1326,
 btwn
 Hebron & Richardson

Yell. Div. DWG. No. N.P.R. 1st Dist.

No scale

To Mandan

To Dickinson
 4429+46 MP 86+1326
 W.E. new 100# joints
 EE. of old.

4435+20

Pres. loc. H9 (Handled under extension AFE).

4220+94 13

ANTELOPE

4179+168 EXH. Ld. 845
 1245-100# replacing
 745-65-100# & 247-7-100#

4139+46 MP 78+2106
 EE. new 100# joints
 W.E. old.

4129+12 MP 78+1072
 W.E. new 100# joints
 EE. old.

4118+40

30,900 TRK. FT. 100# 1st 1st O.H. I.S. CO. Steel

Material Used - MAIN TRACKS

Soikes T. 10. 1.	Plates T. 4. 12. 4 100#	Anchor Unit 100#	Nut Lox H.P. Imp. 100#	Bolts T. 3. 4. 100#	Ins. Jts. FT. 31. 1.	T. 6. 7. 100#	Lim. Ft. 100#	TR FT. 100#
12288	6144	2750		1100	3	275	10560	5282
12280	6140	2750		1092	3	273	10560	5280
12360	6180	2753		1104	4	276	10560	5280
12216	6104	2690		1088	2	272	10560	5280
11764	5882	2600		1016	3	254	10064	5032
9720	4960	2106		840	2	210	8284	4142
12392	6196	2684		1072	3	268	10560	5280
2516	1258	545		216	2	54	2144	1072
7568	3784	1620		644	1	161	6348	3174
12416	6208	2708		1064	3	267	10560	5280
12712	6386	2712		1076	3	269	10560	5280
12560	6280	2718		1076	3	267	10560	5280
12208	6144	2722		1080	2	270	10560	5280
12184	6092	2710		1076	2	267	10560	5280
3144	1572	680		272	-	68	2652	1326
158 468	79234	34 748		13 820	36	3455	135 096	67 548

CHARGE OTH. TRACKS

Imp. H.P. Nut 100#	Lox 100#	7/8" 85	7/8" 100	100/85
4	24	4	24	2
4	24	4	24	2
4	24	4	24	2
4	24	4	24	2
12	72	12	72	6

CHARGE q/c Extension

8	4			
88	44			

CHARGE

FROM East End Station	TO West End Station	TRK. FT. 90#
3728+78	3801+80	5282
3801+80	3854+40	5280
3854+40	3907+80	5280
3907+80	3960+20	5280
3960+20	4024+18	5032
4024+18	4065+60	4142
4065+60	4118+40	5280
4118+40	4171+80	5280
4171+80	4224+00	5280
4224+00	4276+80	5280
4276+80	4329+60	5280
4329+60	4382+40	5280
4382+40	4435+20	5280
4435+20	4448+46	1326
CHG TOTALS	CRED	67548 135 096

CREDIT

TRK. FT. 90#	TRK. FT. 100#
5282	10564
5280	10560
5280	10560
5280	10560
5032	10284
4142	8284
5280	10560
1072	2144
3174	6348
5280	10560
5280	10560
5280	10560
5280	10560
5280	10560
5280	10560
5280	10560
1326	2652
67548	135 096

CREDIT

T. FT. 90#	T. FT. 100#	L. FT. 90#	L. FT. 100#
904	854	904	854
1012	917	1064	982
917	817	1174	842
945	297	1239	894
8874	797	3768	1590

LOCATION	W. Switch. Knife R. +44
East Sw. Knife Exer	
West "	
East " Antelope	
TOTALS	

Stand	Gd. Pl. 8" x 2" 100#	Sw. 16" x 5" 100#	Prod. 14" x 5" E 100#
1	1	1	1
1	1	1	1
1	1	1	1
3	3	3	3

W.E. Tkd. Yld	8
2	4

CREDIT

T. FT. 90#	T. FT. 100#	L. FT. 90#	L. FT. 100#
904	854	904	854
1012	917	1064	982
917	817	1174	842
945	297	1239	894
8874	797	3768	1590

