

P. 1363  
6-24NORTHERN PACIFIC RAILWAY COMPANY  
AUTHORITY FOR EXPENDITURE

1928

YEAR 1927

SUPERINTENDENT'S NO. 238

DEPT. NO.

ENGINEERING DEPT. NO. 228-27

A. F. E. NO.

26

Tacoma Div. Ocosta Branch

DISTRICT STATE Wash

VAL. SEC. NO. 28-B

AUTHORITY IS REQUESTED FOR A NET EXPENDITURE OF \$ 497.

Accounting distribution as follows: (Distribution to be made in General Office.)

	Operating Expenses	Profit and Loss	Net Operating Expenses	Net Profit and Loss
Cost of property retired	\$ 110	\$	\$	\$
Value of salvage			110	
Incidental costs			11	
Total to Operating Expenses				121 ✓
Total to Profit and Loss				
To Material and Supplies				
To Bills for Collection				
To Other Accounts				
Net charge to investment account—Additions and Betterments				376 ✓
Total of distribution				497 ✓

Original Cost Adjustment  
Made in JUN 20 1928  
Final

Adjusted MAR 1931  
Class of Work No. 15  
Adjusted DEC 1930

Budget reference: WORKING BUDGET.

Joint facility contract reference:

O&W) 3-31-17  
CM&STP) 3-20-17

The location is

on this company's property. To secure rights, it will be necessary

Location:

South Aberdeen, Washington

Title

Toilet facilities in section house.

and

Reason:

At section house at South Aberdeen an outside vault toilet is maintained. The City has notified the Railway Company that it will be necessary to provide sanitary toilet facilities. For this reason it is proposed to install toilet and sink with connection to City sewer as per engineers blueprint and estimate attached.

Work to be done by company force under charge of

Superintendent

Accounting to concentrate in the office of

Division Accountant

Signature and Title:

Superintendent Date Dec 9 1927

APPROVED:

General Superintendent.

Asst. Chief Engr. or Engr. Maint. of Way.

General Manager.

Mech. Supt., Supt. Traction, or Signal Engr.

Chief Engineer.

Vice President.

For Comptroller.

President.

Date of Final Approval { JAN 1928 19

COMPTROLLER'S RECORD OF NOTICE OF APPROVAL AND OF COMPLETION

Form No. 1345 issued.

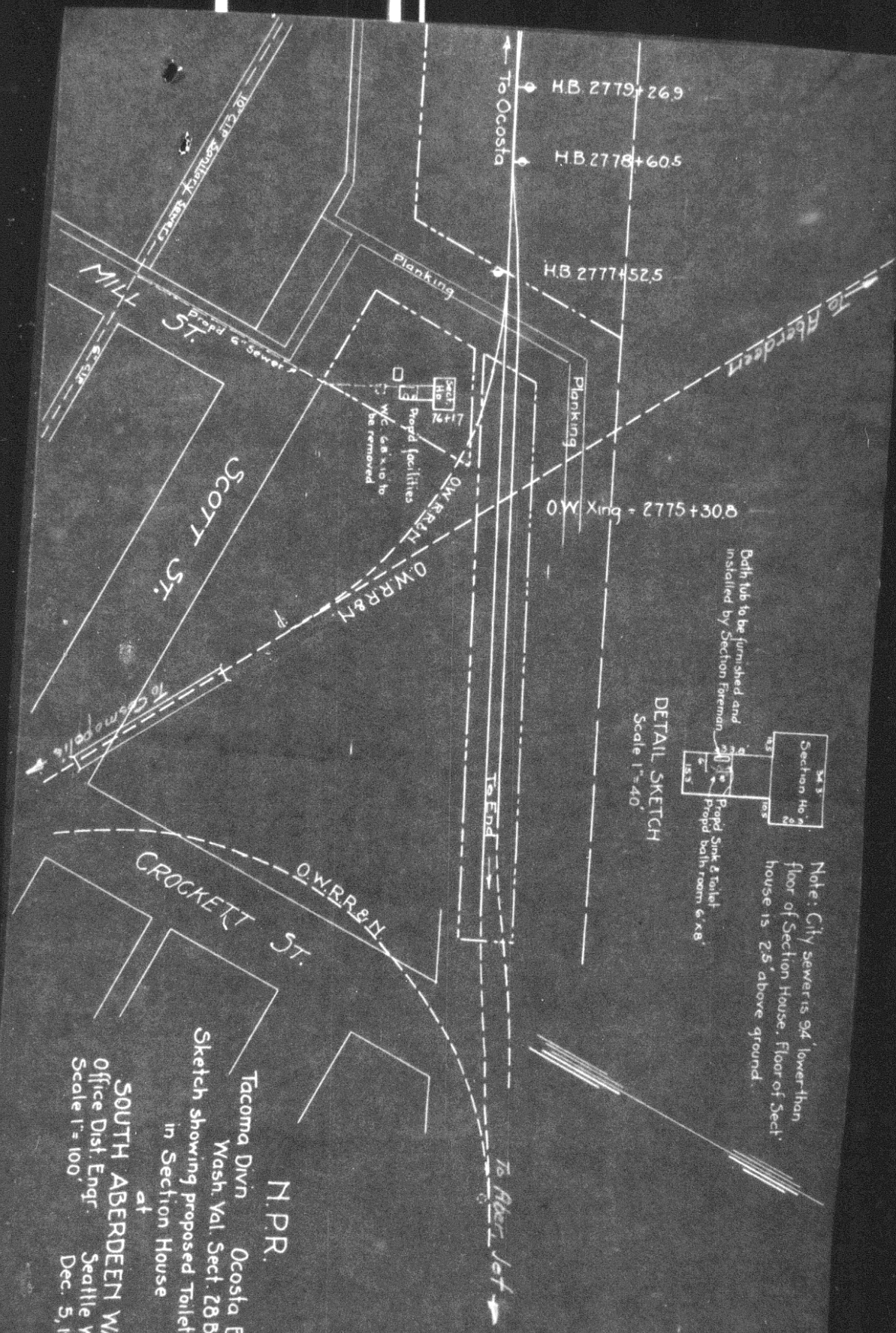
19

Work begun

19

Work finished

April 28 1928



Bath tub to be furnished and installed by Section Foreman



Note: City sewer is 94' lower than floor of Section House. Floor of Sect. house is 2.5' above ground.

DETAIL SKETCH  
Scale 1"=40'

N.P.R.  
Tacoma Divn Ocosta Br.  
Wash. Val. Sect. 28 B.  
Sketch showing proposed Toilet facilities  
in Section House  
at  
SOUTH ABERDEEN WASH.  
Office Dist. Engr.  
Seattle Wash.  
Dec 5, 1927.