



N. P. 1363
6-24

1927

1927
NORTHERN PACIFIC RAILWAY COMPANY
AUTHORITY FOR EXPENDITURE

1927
A. F. E. NO. 3

SUPERINTENDENT'S NO.
M.P.C. 1

DEPT. NO.
ENGINEERING DEPT. NO. 3

DISTRICT STATE No. Dak. VAL. SEC. NO. 2

Yellowstone Div First

AUTHORITY IS REQUESTED FOR A NET EXPENDITURE OF \$ 4 680.

Accounting distribution as follows: (Distribution to be made in General Office.)

	Operating Expenses	Profit and Loss	Net Operating Expenses	Net Profit and Loss
Cost of property retired	150.		150.	
Value of salvage	0.		590.	740.
Incidental costs				
Total to Operating Expenses				0.
Total to Profit and Loss				
To Material and Supplies				
To Bills for Collection				
To Other Accounts				
Net charge to investment account—Additions and Betterments				3 940.
Total of distribution				4 680.

Made in DEC 19 1927



Budget reference: Item No. 110- Budget 1927

Joint facility contract reference: None

The location is - - - on this company's property. To secure rights, it will be necessary to do nothing

Location: Near Hebron, North Dakota, Bridge 73 over Knife River
Title: Reinforce I Beam Spans

Reason: The present structure consists of two 30 foot I Beam and one 25 foot I Beam Spans, 86 feet long and 18 feet high on concrete masonry and cylinder piers, built in 1900. It was designed for 146 ton loading and is too light for the heavy type of power. It is proposed to place three additional I Beams in each span and make it good for E-65 loading.

Checked and Entered
President's Office



Work to be done by company force under charge of Division Superintendent

Accounting to concentrate in the office of Division Superintendent at Glendive
Signature and Title: *W. H. ...* Bridge Engineer

Date Sept. 8, 1926

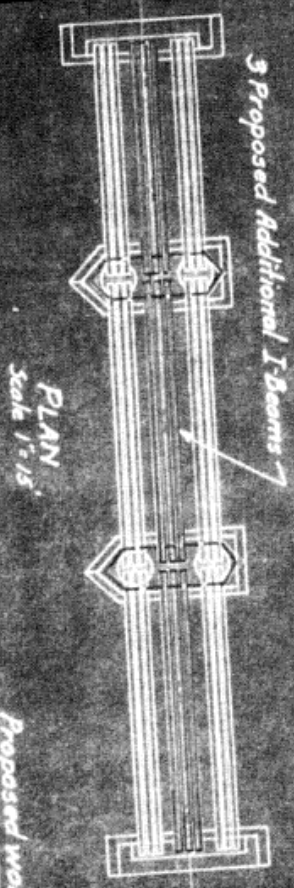
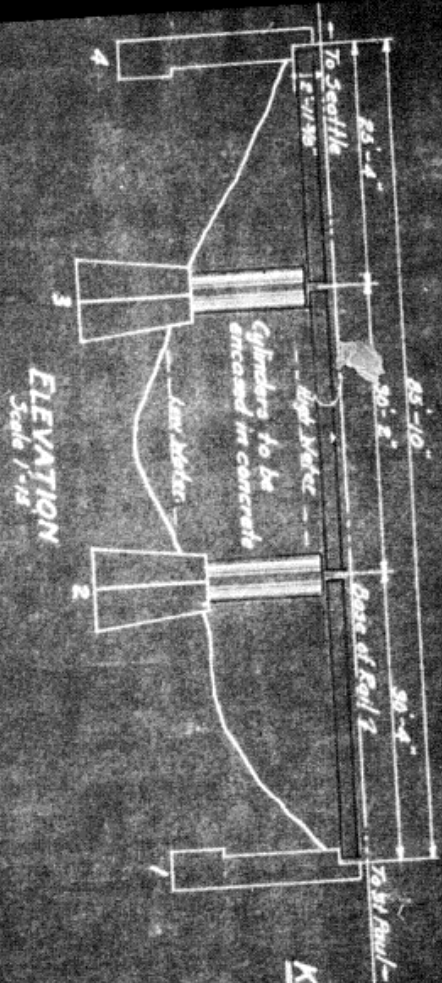
APPROVED:

General Superintendent	Asst. Chief Engr. or Engr. Maint. of Way	General Manager
Mech. Supt., Supt. Telgr. or Signal Engr.		
Chief Engineer		Vice President
Comptroller	President	

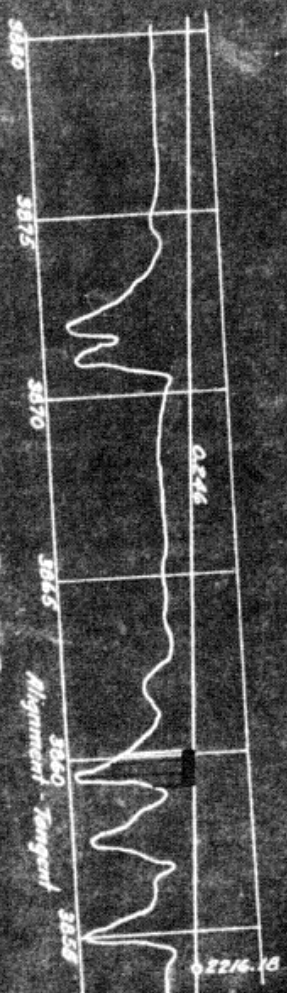
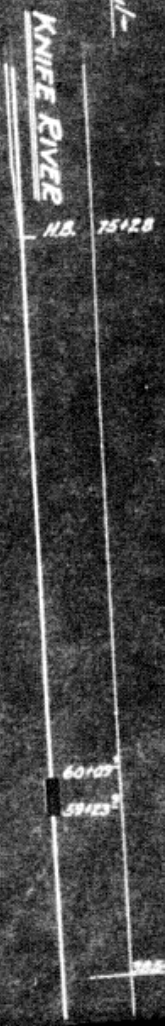
Date of Final Approval: DEC 4 - 1926

COMPTROLLER'S RECORD OF NOTICE OF APPROVAL AND OF COMPLETION

June 25 1927



Proposed work shown in Red



BRIDGE 75 OVER KNIFE RIVER
SKETCH SHOWING PROPOSED ADDITIONAL I-BEAMS
MAKING SPANS GOOD FOR STAND LOADING

N.P.R.Y.
 1st Sub Divn.
 Yellowstone Division
 NDAK. VAL. SECT. 2

Office of Bridge Engineer
 St. Paul Minn. Sept. 17, 1926

Scales as noted

No 75

1-25 & 2-30 I-Beams

