

Form 13, SM 6-22 "B"
NORTHERN PACIFIC RAILWAY CO 1927
 AUTHORITY FOR EXPENDITURE

Superintendent's No. _____
 No. _____

Engineering Dept. No. 1-1927
 Div. LINE BILLS

Year: 1927

A. F. E. NO. 15

AUTHORITY IS REQUESTED FOR A NET EXPENDITURE OF \$ 36935
 Accounting (distribution as follows: (Distribution to be made in General Office.)

	Operating Expenses	Profit and Loss	Net Operating Expenses	Net Profit and Loss
Cost of property retired	\$ 193			
Value of salvage				
Incidental costs	144			
Total to Operating Expenses			48	
Total to Profit and Loss				106
To Material and Supplies				
To Bills for Collection				
To Other Accounts				
Net charge to investment account—Additions and Betterments				\$ 154
Total of distribution				144

Budget reference: _____

Joint facility contract reference: _____

The location is _____

Location: _____

Title and Reason: _____

Reason: _____

on this company's property. To secure rights, it will be necessary
Silver Bow
~~XXXXXXX~~, Mont.

and installation of Automatic Block Signals in this
 vicinity is desirable to facilitate and safe-guard
 the movement of trains.

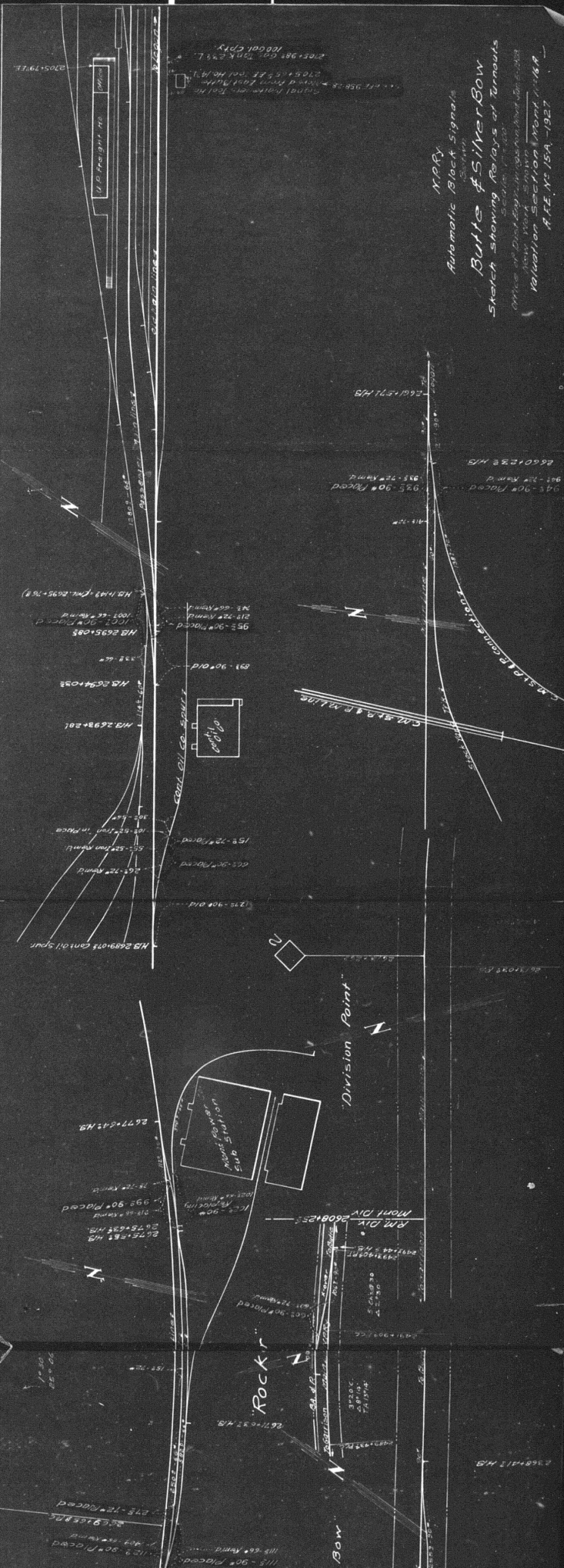
Work to be done by company force under charge of _____
 Accounting to concentrate in the office of _____

Signature and Title: [Signature] _____
 Date October 18 19 27

APPROVED:

General Superintendent	Prin. Asst. Engr. or Engr. Maint. of Way.	Assistant General Manager.
Mech. Supt., Supt. Telegraph or Signal Engr.	Chief Engineer.	General Manager.
For Comptroller.	President.	Vice President.

COMPTROLLER'S RECORD OF NOTICE OF APPROVAL AND OF COMPLETION
 No. 145 issued _____
 19 _____ Work begun
 19 _____ Work _____



N.P.R.
 Automatic Block Signal
 Buttes & Silver Bow
 Sketch showing Relays at Turnouts
 Office of District Engineer, Great Northern Railway
 Helena, Montana
 Date, Nov 15, 1927

Signal House - Tol
 2705+15.5 Z.E. 2nd No. 14
 2705+15.5 Z.E. 2nd No. 14
 2705+15.5 Z.E. 2nd No. 14

2705+15.5
 2705+15.5
 2705+15.5

M2.2695+085
 95°-30' Placed
 100'-66' from
 M3.2694+055
 91°-30' Placed
 100'-66' from
 M1.2693+201
 100'-66' from
 M2.2693+075 cont. Oil Spur
 100'-66' from

2660+232 M/B
 94°-30' Placed
 94°-30' Placed
 2660+232 M/B

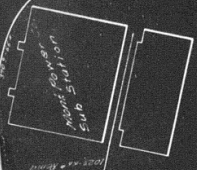
2660+232 M/B
 94°-30' Placed

94°-30' Placed
 2660+232 M/B

C.M. 31.21 P. 10.11.12
 C.M. 31.21 P. 10.11.12



Division Point



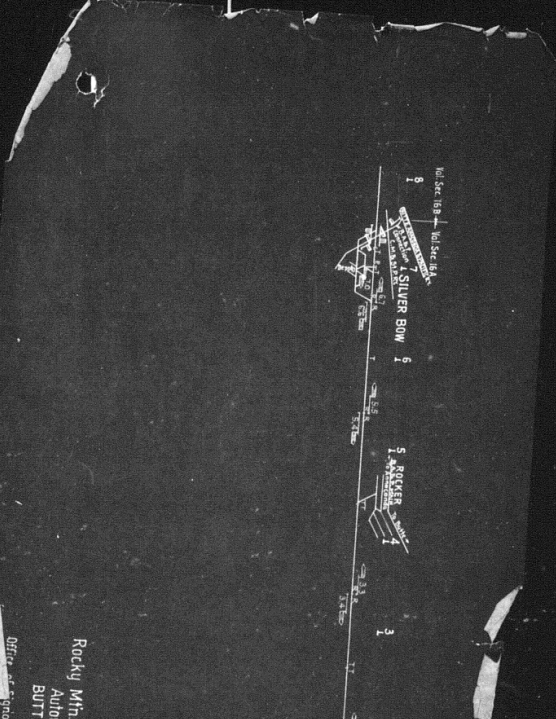
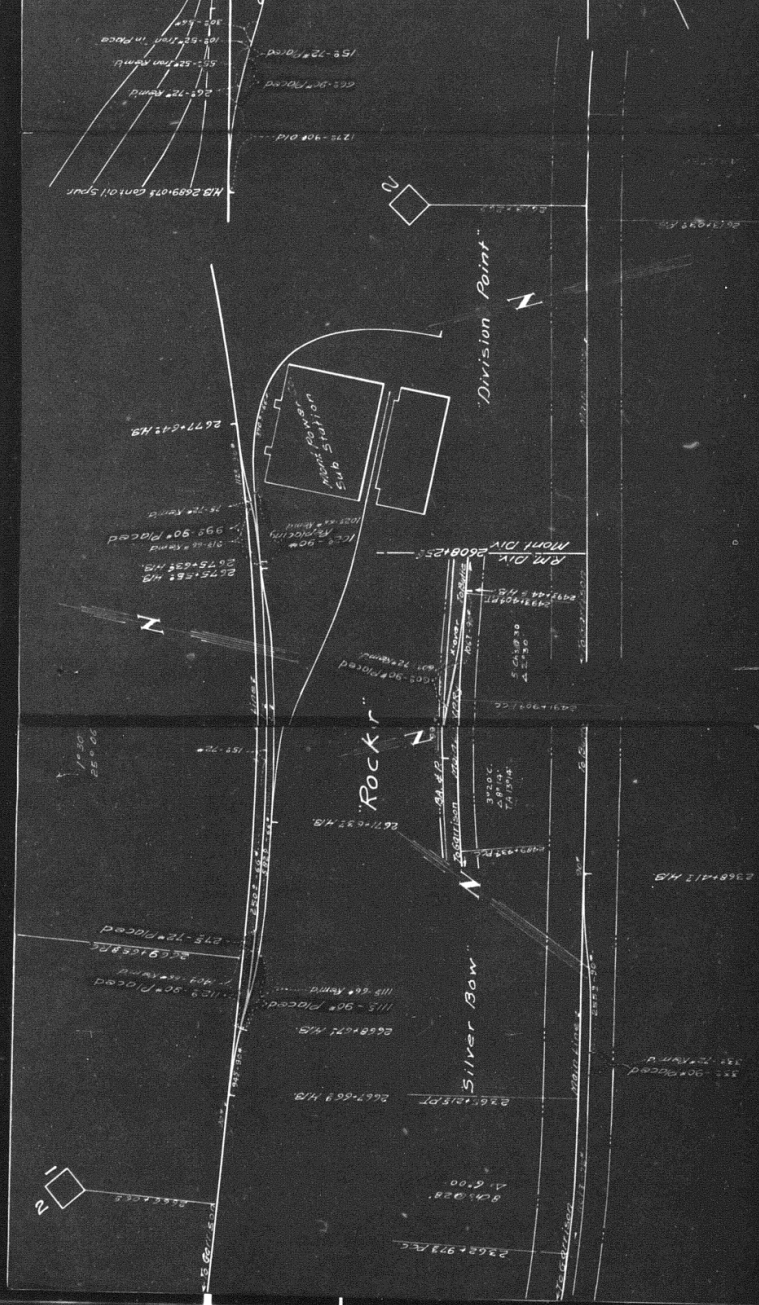
M2.2693+075
 95°-30' Placed
 100'-66' from
 2677+047 M/B
 95°-30' Placed
 100'-66' from
 2677+047 M/B

Rocky

Bow

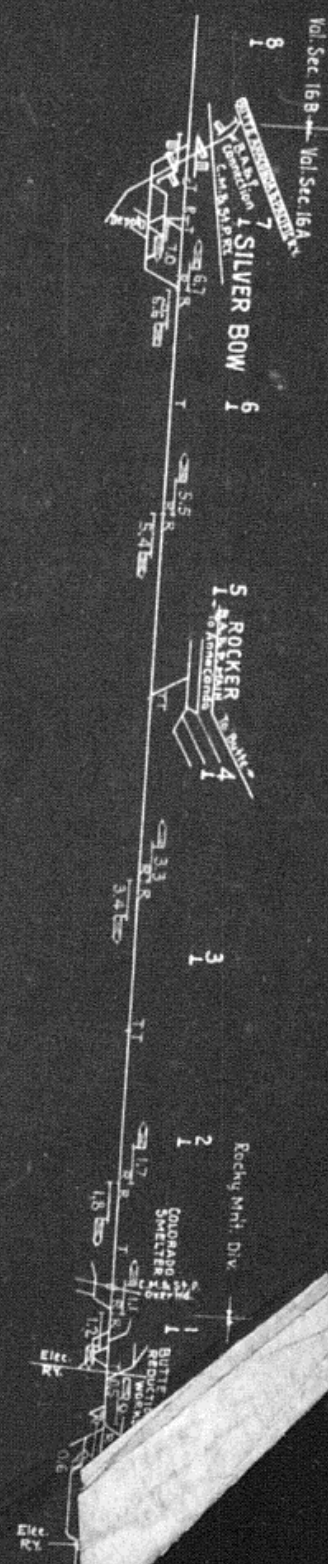
M2.2693+075
 95°-30' Placed
 100'-66' from
 2677+047 M/B
 95°-30' Placed
 100'-66' from
 2677+047 M/B

2660+232 M/B



Rocky Mtn
Autom
BUTTE

1 SILVER BOW 5
5 ROCKY 1



N.P.R.Y.
 Rocky Mtn. Div. - 2nd Sub. Div.
 Automatic Block Signaling
 BUTTE to SILVER BOW
 SCALE 1" = 100'
 Office of Signal Engr. Staff