



N. P. 1363
6-24

1927
NORTHERN PACIFIC RAILWAY COMPANY
AUTHORITY FOR EXPENDITURE

1927
YEAR 1927

SUPERINTENDENT'S NO.

DEPT. No.

A. F. E. NO. 13

M.F.C. No.

ENGINEERING DEPT. No. 2

Rocky Mountain

DIV.

First

DISTRICT
Branch

STATE

Mont.

VAL. SEC. No. 4

AUTHORITY IS REQUESTED FOR A NET EXPENDITURE OF \$ 2 125.

Accounting distribution as follows: (Distribution to be made in General Office.)

	Operating Expenses	Profit and Loss	Net Operating Expenses	Net Profit and Loss
Cost of property retired	\$ 100.			\$ 2
Value of salvage	0.		100.	
Incidental costs			465.	
Total to Operating Expenses				565.
Total to Profit and Loss		Original Cost Adjustment		0.
To Material and Supplies		Made in	19	
To Bills for Collection				
To Other Accounts				
Net charge to investment account—Additions and Betterments				1 560.
Total of distribution				2 125.



Budget reference: Item No. 134 Budget 1927

Class of Work: No. 4

Joint facility contract reference: None

The location is - - - on this company's property. To secure rights, it will be necessary to do nothing

Location: Near Gold Creek, Montana, Bridge 57 over Gold Creek

Title: Reinforce I Beam Span

and

Reason: The present structure consists of 1-30 foot I Beam span on concrete masonry for two tracks. The East Bound track bridge, designed for 146 ton loading, was built in 1902 and the West Bound track bridge, designed for 188 ton loading, was built in 1908. It is proposed to reinforce the east bound track bridge, which is too light for heavy power. It is proposed to place three additional I Beams in each span and make it good for E-65 loading.

Checked and Entered
President's Office

2150
Work to be done by company force under charge of Division Superintendent

Accounting to concentrate in the office of Division Superintendent at Missoula

Signature and Title: Bridge Engineer

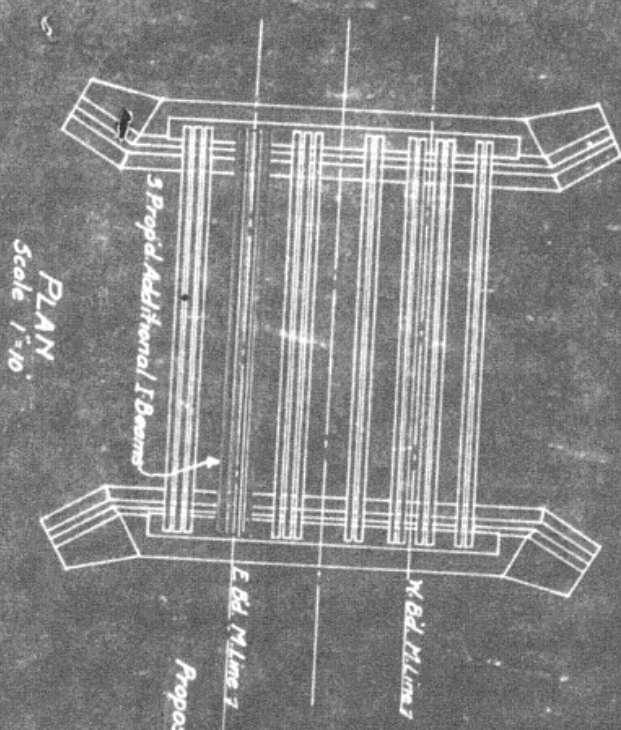
Date Sept. 9, 1926



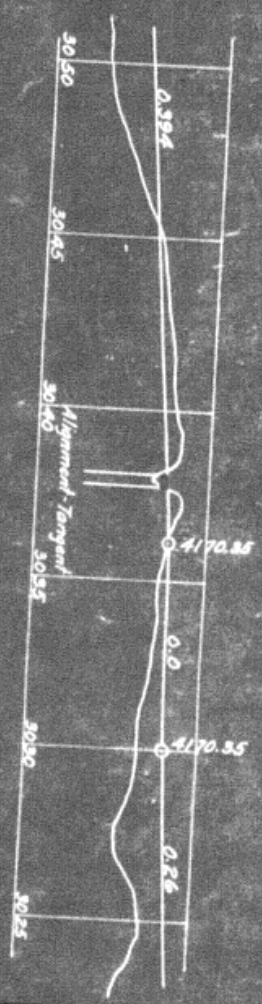
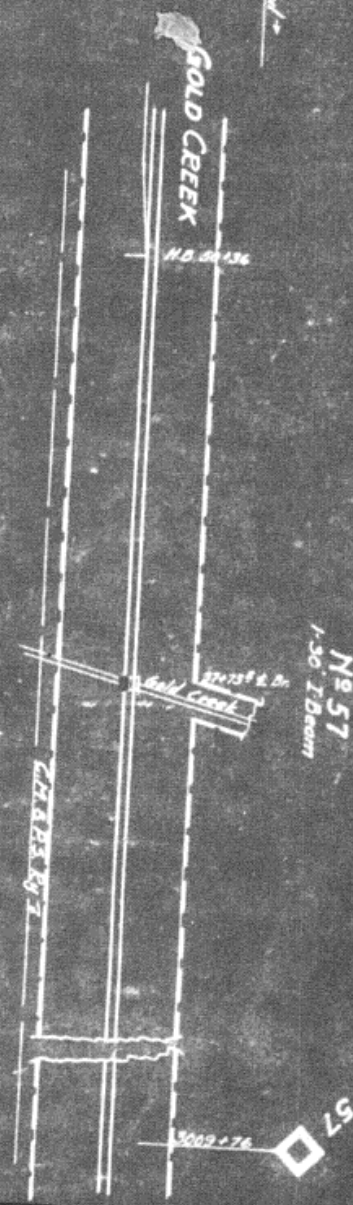
APPROVED:			
General Superintendent	Asst. Chief Engr. or Engr. Maint. of Way	General Manager	
Mech. Super., Insp. Train. or Signal Engr.			
Engineer		Vice President	
For Comptroller	President	Date of Final Approval	DEC 4 - 1926

COMPTROLLER'S RECORD OF NOTICE OF APPROVAL AND OF COMPLETION

Form No. 1345 issued 19. Work begun 19. Work finished January 24, 1927



Proposed work shown in Red.



Rocky Mtn. Division
MONT. VAL. SECT. 4
BRIDGE 57 OVER GOLD CREEK
SKETCH SHOWING PROPOSED ADDITIONAL I-BEAMS
FOR EAST BOUND TRACK
MAKING SPAN GOOD FOR STAND. LOADING
Office of Bridge Engineer, St. Paul Minn., Sept. 24, 1926

No. 57
1-30 I-Beams

57