



N. P. 1363
6-24

1927

NORTHERN PACIFIC RAILWAY COMPANY AUTHORITY FOR EXPENDITURE

COMPTROLLER'S COPY

1927

SUPERINTENDENT'S No.
M.F.C. 0

DEPT. No.
ENGINEERING DEPT. No. 4

1927
Year 1927
A. F. E. NO. 12

Montana

Div. Second

DISTRICT STATE Mont.
BRANCH

VAL. SEC. No. 3

AUTHORITY IS REQUESTED FOR A NET EXPENDITURE OF \$ 1 200.
Accounting distribution as follows: (Distribution to be made in General Office.)

Cost of property retired	Operating Expenses	Profit and Loss	Net Operating Expenses	Net Profit and Loss
Value of salvage	25.		25.	
Incidental costs	0.		440.	
Total to Operating Expenses				
Total to Profit and Loss				
To Material and Supplies				465.
To Bills for Collection				0.
To Other Accounts				
Net charge to investment account—Additions and Betterments				1 005.
Total of distribution				1 470.

Original Cost Adjustment
Made NOV 1 1927



Budget reference: Item No. 125- Budget 1927

Joint facility contract reference: None

The location is - - - on this company's property. To secure rights, it will be necessary to do nothing

Location: Near Lombard, Montana, Bridge 191
Title: Reinforce I Beam Span

Reason: The present structure consists of one 20 foot I Beam on concrete masonry, built in 1902. It was designed for 146 ton loading and is too light for the heavy type of power. It is proposed to place three additional I Beams in each span and make it good for E-65 loading.

Checked and Entered
President's Office

Work to be done by company force under charge of S Division Superintendent
Accounting to concentrate in the office of Division Superintendent at Glendive

Signature and Title:

M. S. Clements
Bridge Engineer Date Sept. 11, 1926



APPROVED:

General Superintendent.	Asst. Chief Engr. or Engr. Maint. of Way.	General Manager.
Mech. Supt., Supt. Train or Signal Engr.	Chief Engineer.	Vice President.
For Comptroller.	President	Date of Final Approval

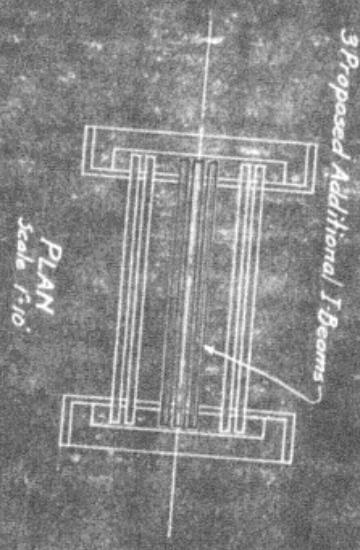
COMPTROLLER'S RECORD OF NOTICE OF APPROVAL AND OF COMPLETION

Form No. 1345 issued

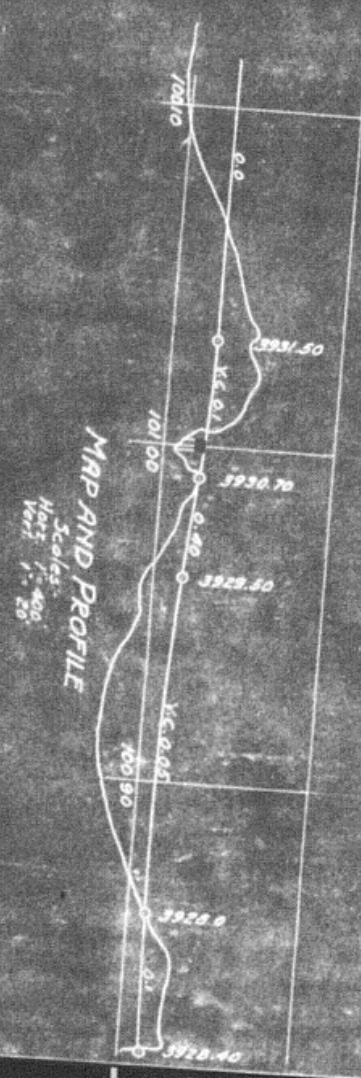
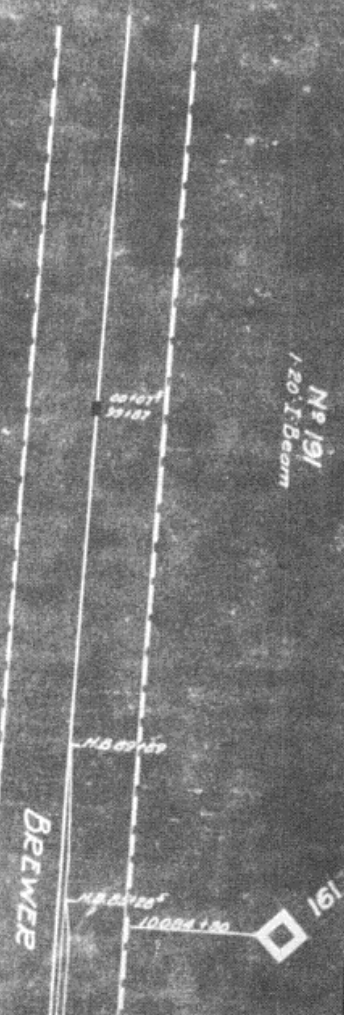
19 Work begun

19 Work finished

June 15 1927



Proposed work shown in Red.



Montana Division
NPRY
MONT VAL. SECT. 5
BRIDGE 191 NEAR BREWER
SKETCH SHOWING PROPOSED ADDITIONAL I-BEAMS
MAKING SPAN GOOD FOR STAND LOADING

Office of Bridge Engineer
St. Paul, Minn. Sept. 22, 1926