



N. P. 1363
6-24

1927
NORTHERN PACIFIC RAILWAY COMPANY 1927
AUTHORITY FOR EXPENDITURE

YEAR 1927

SUPERINTENDENT'S NO.
M.F.C. N.

DEPT. NO.
ENGINEERING DEPT. NO. 3

A. F. E. NO. 11

Montana

Div. Second

DISTRICT STATE Mont.

VAL. SEC. No. 3

AUTHORITY IS REQUESTED FOR A NET EXPENDITURE OF \$ 4 930.

Accounting distribution as follows: (Distribution to be made in General Office.)

	Operating Expenses	Profit and Loss	Net Operating Expenses	Net Profit and Loss
Cost of property retired	200.		200.	
Value of salvago	0.		650.	
Incidental costs				850.
Total to Operating Expenses				
Total to Profit and Loss				0.
To Material and Supplies				
To Bills for Collection				
To Other Accounts				4 080.
Net charge to investment account—Additions and Betterments				4 930.
Total of distribution				



Original Cost Adjustment Made in NOV 1 1927 19

Budget reference: Item No. 124 Budget 1927

Class of Work: No. 4

Joint facility contract reference: None

The location is - - - on this company's property. To secure rights, it will be necessary to do nothing

Location: Near Chestnut, Montana, Bridge 134 over Rock Creek

Title: Reinforce I Beam Spans

Reason: The present structure consists of 2-30 foot I Beam Spans on concrete masonry for two tracks. They were designed for 146 ton loading; built in 1902. The spans are too light for heavy power and it is proposed to reinforce them by placing three additional I Beams in each span and make them good for E-65 loading.

Checked and Entered
President's Office



Work to be done by company force under charge of Division Superintendent

Accounting to concentrate in the office of Division Superintendent at Livingston, Montana

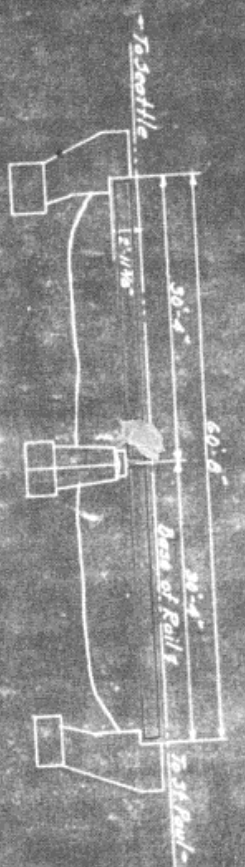
Signature and Title: *M. S. Clements* Bridge Engineer

Date Oct. 16, 1926

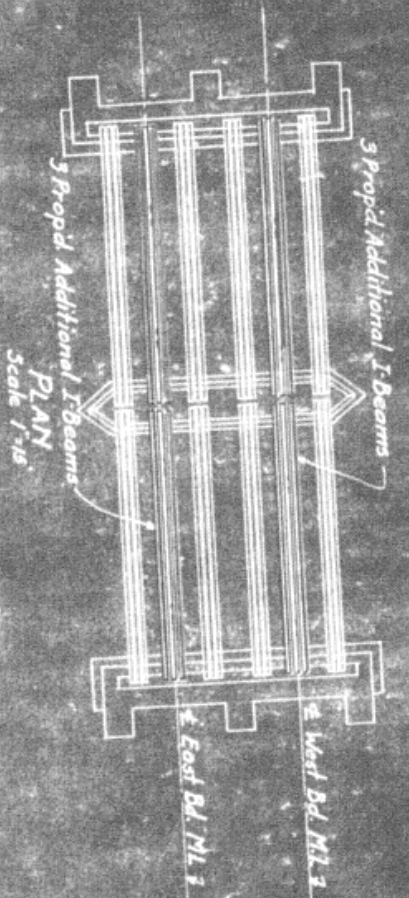
APPROVED:	General Superintendent	Asst. Chief Engr. or Engr. Maint. of Way.	General Manager.
	Mech. Supt., Supt. Telgr. or Signal Engr.		
	Chief Engineer.		Vice President.
	For Comptroller.	President	Date of Final Approval { DEC 4 - 1926

COMPTROLLER'S RECORD OF NOTICE OF APPROVAL AND OF COMPLETION

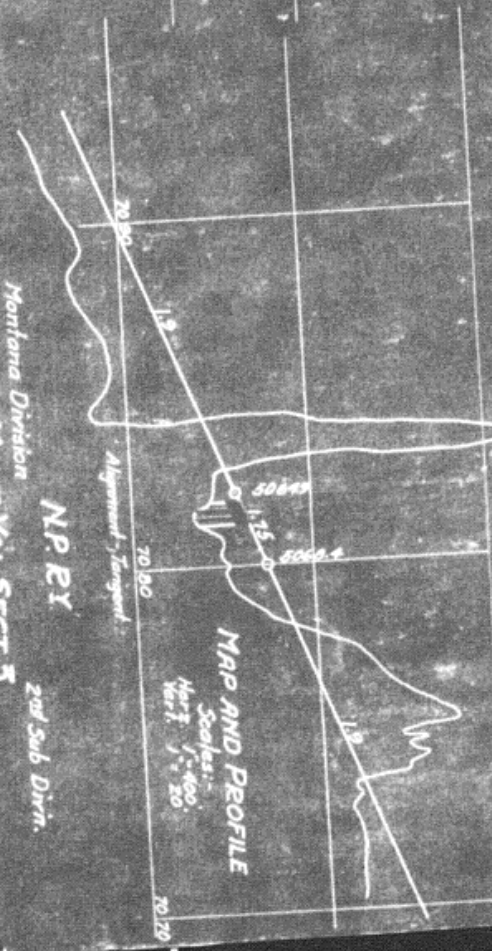
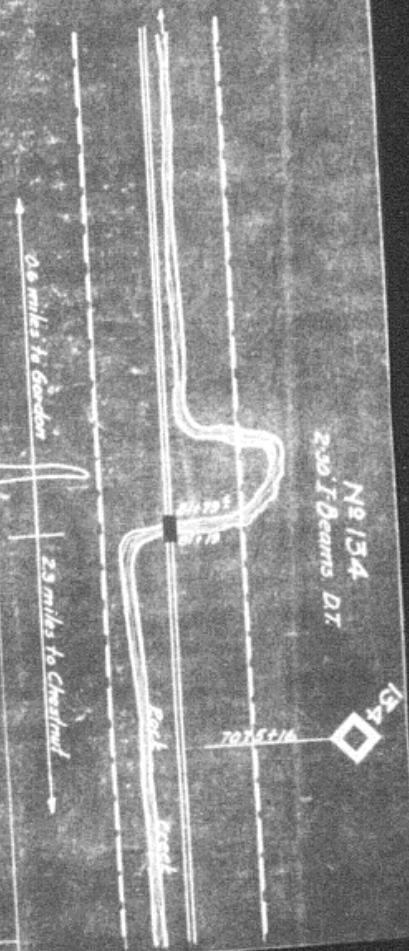
Form No. 1345 issued. 19. Work begun. 19. Work finished June 22 1927



ELEVATION
Scale 1/15



Proposed work shown in Red



Montana Division
 MONT. VAL. SECT. 5
 BRIDGE 134 OVER ROCK CREEK
 SKETCH SHOWING PROPOSED ADDITIONAL I-BEAMS
 MAKING SPAN GOOD FOR STAND. LOADING

Office of Bridge Engineer
 St. Paul Minn. Sept. 21 1926