



N. P. 1363

1927

NORTHERN PACIFIC RAILWAY COMPANY

COMPTROLLER'S COPY

AUTHORITY FOR EXPENDITURE

1927 YEAR 1927

SUPERINTENDENT'S NO.

DEPT. NO.

N.P.C. No.

ENGINEERING DEPT. NO. 4

A. F. E. NO.

4

Yellowstone Div. First

DISTRICT STATE No. Dak. VAL SEC. NO. 2

AUTHORITY IS REQUESTED FOR A NET EXPENDITURE OF \$ 2 120.

Accounting distribution as follows: (Distribution to be made in General Office.)

	Operating Expenses	Profit and Loss	Net Operating Expenses	Net Profit and Loss
Cost of property retired	\$ 50.			
Value of salvage	0.		50.	
Incidental costs			590.	
Total to Operating Expenses				\$ 640.
Total to Profit and Loss		Original Cost Adjustment		
To Material and Supplies		Made in JAN 1 - 1928 19		0.
To Bills for Collection		<i>Time</i>		
To Other Accounts				
Net charge to investment account—Additions and Betterments				1 480.
Total of distribution				\$ 2 120.

Budget reference: Item No. III - Budget 1927

Joint facility contract reference: None

The location is - - - on this company's property. To secure rights, it will be necessary to do nothing

Location: Near Hebron, North Dakota, Bridge 74.

Title Reinforce I Beam Span

and

Reason: The present structure consists of one 30 foot I Beam on concrete masonry, built in 1900. It was designed for 146 ton loading and is too light for the heavy type of power. It is proposed to place three additional I Beams in each span and make it good for E-65 loading.



Checked and Entered President's Office



Work to be done by company force under charge of Division Superintendent

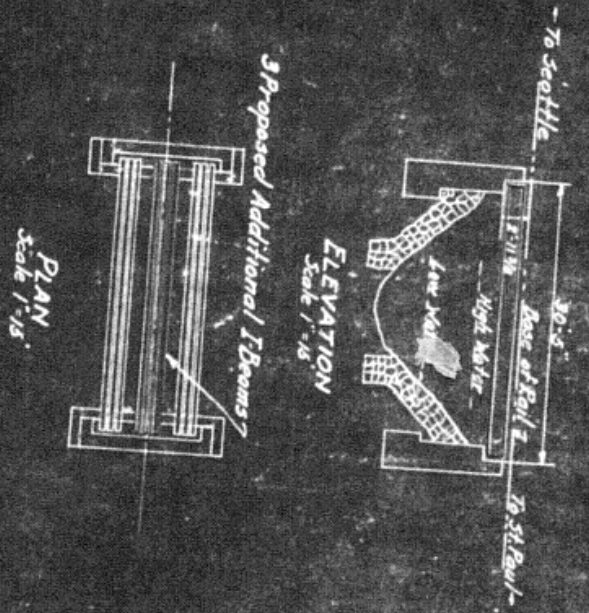
Accounting to concentrate in the office of Division Superintendent at Glendive

Signature and Title: *M. B. Clement* Bridge Engineer Date Sept. 8, 1926

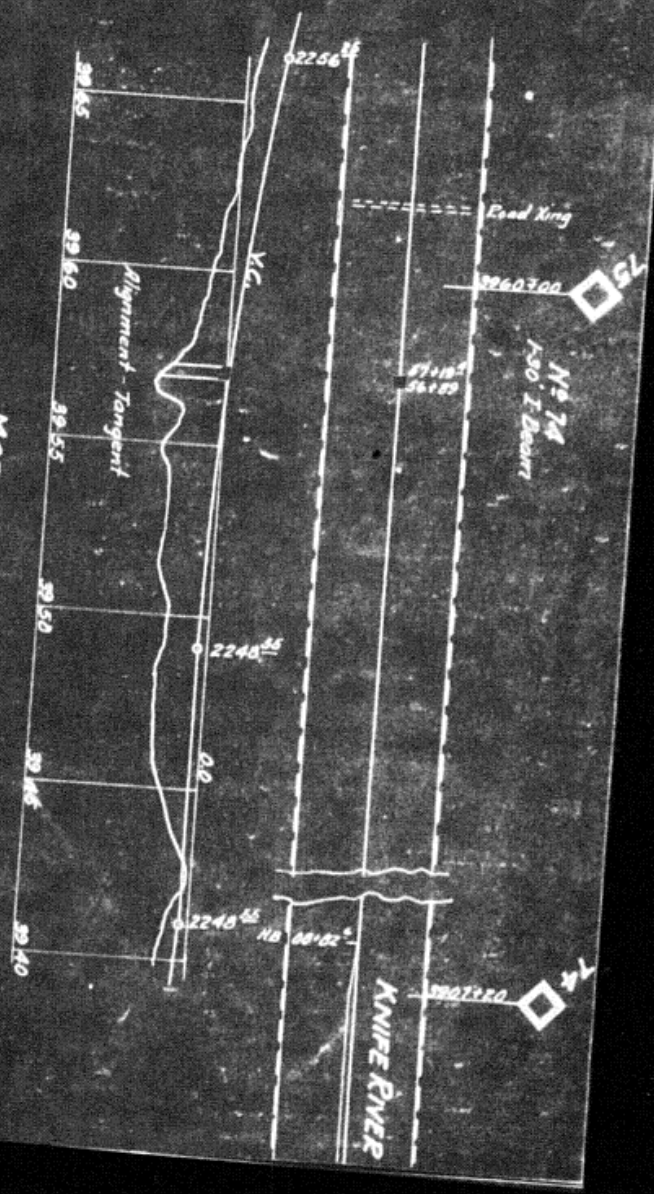
APPROVED:		
General Superintendent	Ast. Chief Engr. or Engr. Maint. of Way	General Manager
Mech. Maint. Maint. Tel. or Signal Engr.		
<i>[Signature]</i> Chief Engineer	<i>[Signature]</i> Vice President	
<i>[Signature]</i> Comptroller	<i>[Signature]</i> President	Date of Final Approval: DEC 4 - 1926

COMPTROLLER'S RECORD OF NOTICE OF APPROVAL AND OF COMPLETION

Form No. 1245 issued 19 Work begun 19 Work finished July 6, 1927

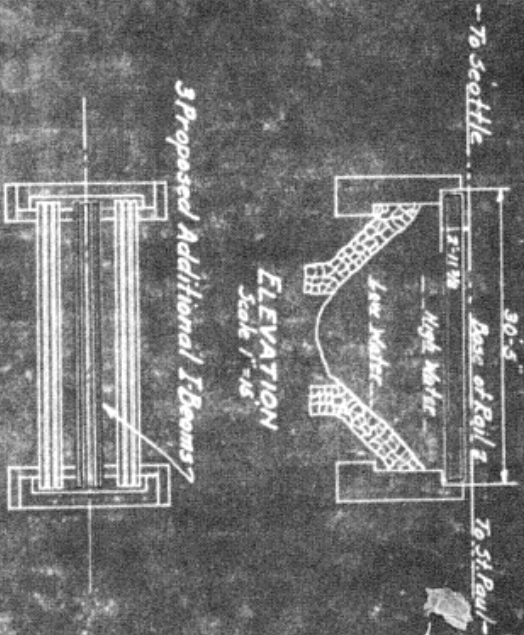


Proposed work shown in Red

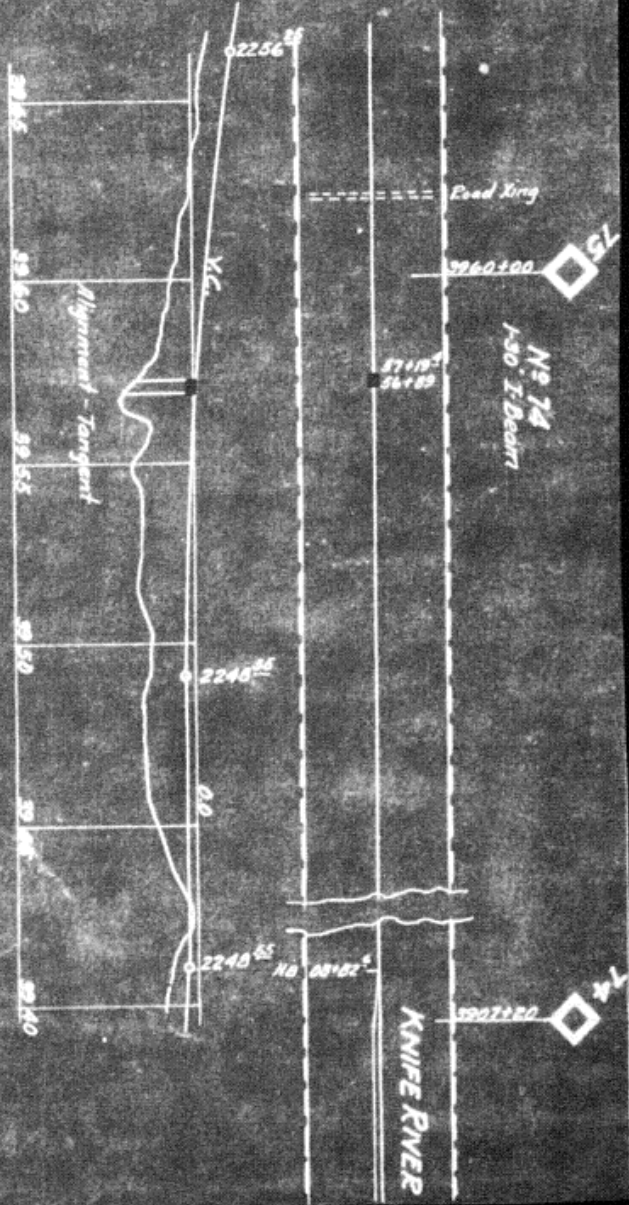


Yellowstone Division
N.P.R.Y.
1st Sub. Divn.
N. DAK. VAL. SECT. 2
BRIDGE 74 NEAR KNIFE RIVER
SKETCH SHOWING PROPOSED ADDITIONAL I-BEAMS
MAKING SPAN GOOD FOR STAND. LOADING

Office of Bridge Engineer
St. Paul, Minn. Sept. 17, 1926
Scales as noted

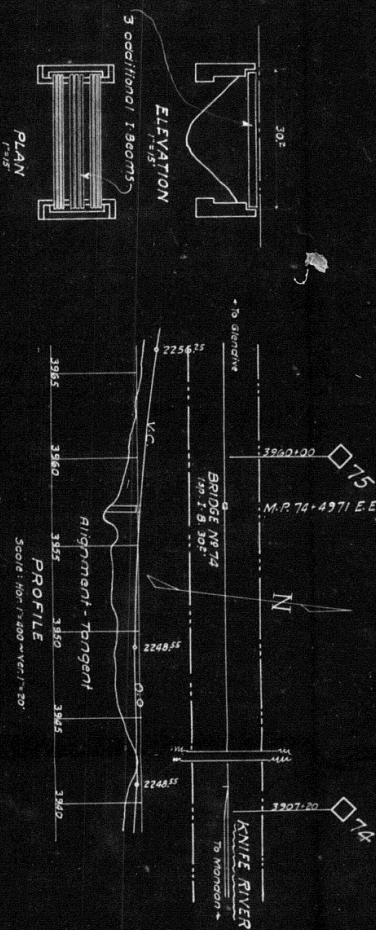


Proposed work shown in Red



N.P.F.Y.
 Yellowstone Division
 N. Dak. Val. Sect. 2
 1st Sub. Divn.
 BRIDGE 74 NEAR KNIFE RIVER
 SKETCH SHOWING PROPOSED ADDITIONAL I-BEAMS
 MAKING SPAN GOOD FOR STAND LOADING
 Office of Bridge Engineers
 St. Paul Minn. Sept. 17, 1926
 Scales as noted

NOTE: For Details, see Bridge Engineer's
 Plan # 81987 dated, St. Paul, Minn., Nov. 16, 1926.



Yell. Div. N.P.Ry. 1st Div.
 Reinforce I-Beam Span-Bridge # 74
 near
Habron
 Office Dist. Engr. Livingston, Mont. Oct. 12, 1927.
 New work shown
 Scale: 1" = 400'
 Valuation Section Nos. Dok. No. 2
 Auth. under Imp. 4-27 dated 12-1-26
 Work begun January 1927
 Work completed July 6, 1927

1927
NORTHERN PACIFIC RAILWAY COMPANY
 DULUTH DIVISION ENGINE & TRUCK COMPANY
 AUTHORITY FOR EXPENDITURE

1927

SUPERINTENDENT'S No. 4
 Mech. DEPT. No. 1
 No. ENGINEERING DEPT. No. A. F. E. NO. 4

Div. DISTRICT STATE VAL. SEC. No.
 BRANCH

AUTHORITY IS REQUESTED FOR A NET EXPENDITURE OF \$ 10,480.51

Accounting distribution as follows: (Distribution to be made in General Office)

	Operating Expenses	Profit and Loss	Net Operating Expense	Net Profit and Loss
Cost of property received				
Value of salvage				
Incidental costs				
Total to Operating Expenses				514.48
Total to Profit and Loss				519.49
To Material and Supplies				
To Bills for Collection				
To Other Accounts		Accrued Depreciation		3992.78
Net charge to investment account—Additions and Betterments				5972.26
Total of distribution				11000.00

Budget reference: Not in budget
 Class of Work: No. 35

Joint facility contract reference:

The location is _____ on this company's property. To secure rights, it will be necessary

Location: Duluth

Title: Replace locomotive No. 3

and _____

Reason:

Locomotive No. 3 purchased second-hand in July 1914 became worn and deteriorated to the extent that repairs were not justified, and Class T-1 locomotive No. 2459 was purchased from the Northern Pacific Railway Company and numbered D.U.D. & T. Co. No. 4, locomotive No. 3 being scrapped. This transaction has been completed and the A.F.E. is submitted for accounting purposes.

Purchase completed Jan. 27, 1927.

Accounting to concentrate in the office of Superintendent
 Signature and Title: *J. M. ...* Superintendent
 Checked and Entered