



N. P. 1363
6-24

1927

NORTHERN PACIFIC RAILWAY COMPANY
AUTHORITY FOR EXPENDITURE

1927

COMPTROLLER'S RECORD
YEAR 1927

SUPERINTENDENT'S NO.

M. F. C. No.

DEPT. No.

ENGINEERING DEPT. No. Z

A. F. E. NO.

2

Yellowstone Div. First

DISTRICT STATE No. Dak. VAL. SEC. No. 2

AUTHORITY IS REQUESTED FOR A NET EXPENDITURE OF \$ 4 580.

Accounting distribution as follows: (Distribution to be made in General Office.)

	Operating Expenses	Profit and Loss	Net Operating Expenses	Net Profit and Loss
Cost of property retired	\$ 150.	\$	\$	\$
Value of salvage	0.			
Incidental costs			150.	
Total to Operating Expenses			590.	
Total to Profit and Loss				740.
To Material and Supplies				0.
To Bills for Collection				
To Other Accounts				
Net charge to investment account—Additions and Betterments				
Total of distribution			3 840.	4 580.



Original Cost Adjustment
Made in NOV 17 1927 19
M. J. [Signature]

Original Cost Adjustment
Made in FEB 7 1928 19
Annual

Budget reference: Item No. 109- Budget 1927

Joint facility contract reference: None

Class of Works: No. 4

The location is - - - on this company's property. To secure rights, it will be necessary to do nothing

Location: Near Hebron, North Dakota, Bridge 71 over Knife River

Title: Reinforce I Beam Spans

Reason: The present structure consists of two 25 foot I Beam and one 30 foot I Beam Spans, 81 feet long and 16 feet high, built in 1901. It was designed for 146 ton loading and is too light for the heavy type of power. It is proposed to place three additional I Beams in each span and make it good for E-65 loading.

Checked and Entered
President's Office

Work to be done by company force under charge of Division Superintendent

Accounting to concentrate in the office of Division Superintendent at Glendive

Signature and Title: *M. J. Clements*
Bridge Engineer

Date Sept. 8, 1926



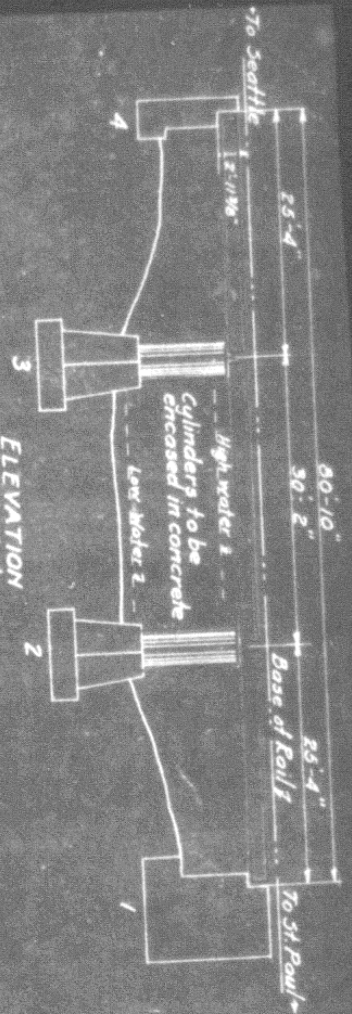
APPROVED:			
General Superintendent	Asst. Chief Engr. or Engr. Maint. of Way	General Manager	
Mech. Supl., Supt. Tele. or Signal Engr.			
Chief Engineer		Vice President	
For Comptroller	President	Date of Final Approval	19

COMPTROLLER'S RECORD OF NOTICE OF APPROVAL AND OF COMPLETION

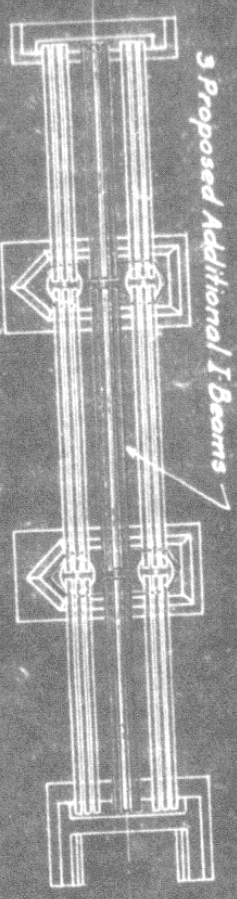
Form No. 1345 Issued

19 Work begun

19 Work finished June 28 1927

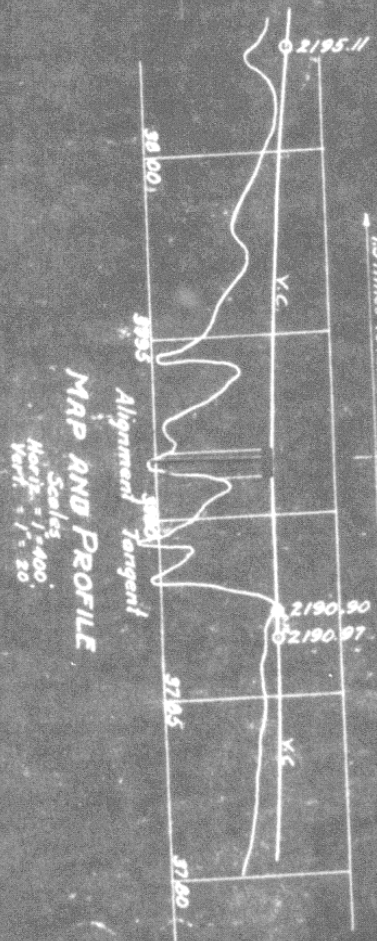
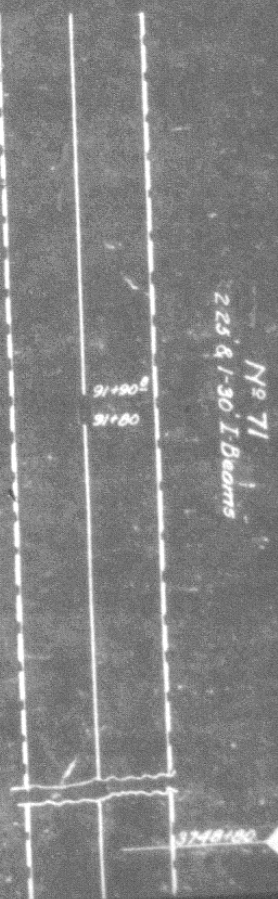


ELEVATION
Scale 1/2"=1'



PLAN
Scale 1/2"=1'

Proposed work shown in Red.

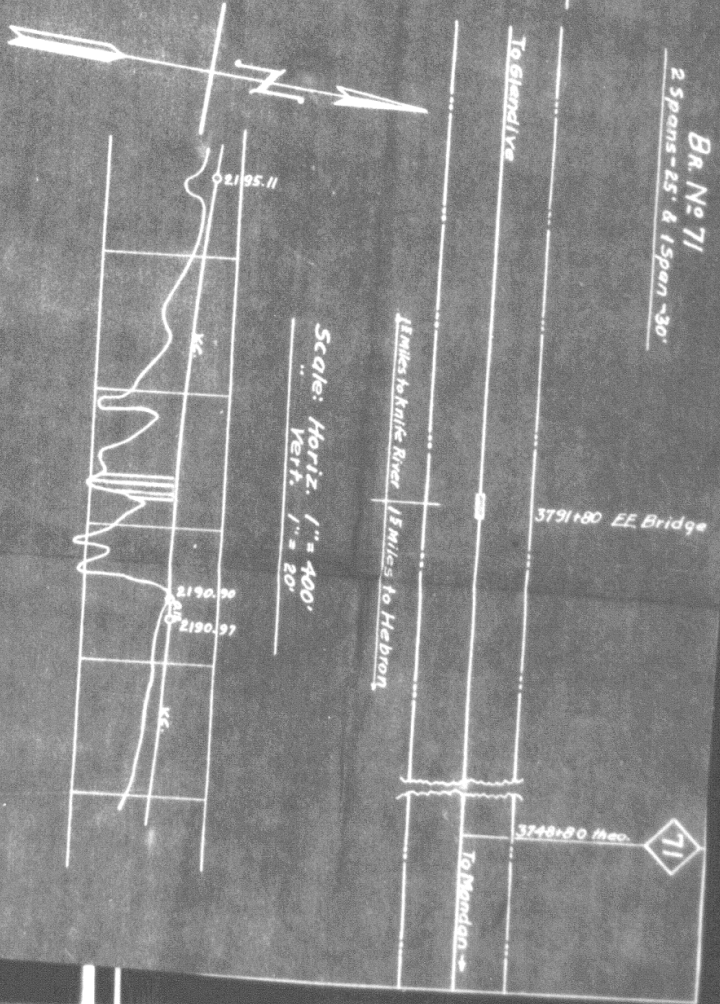
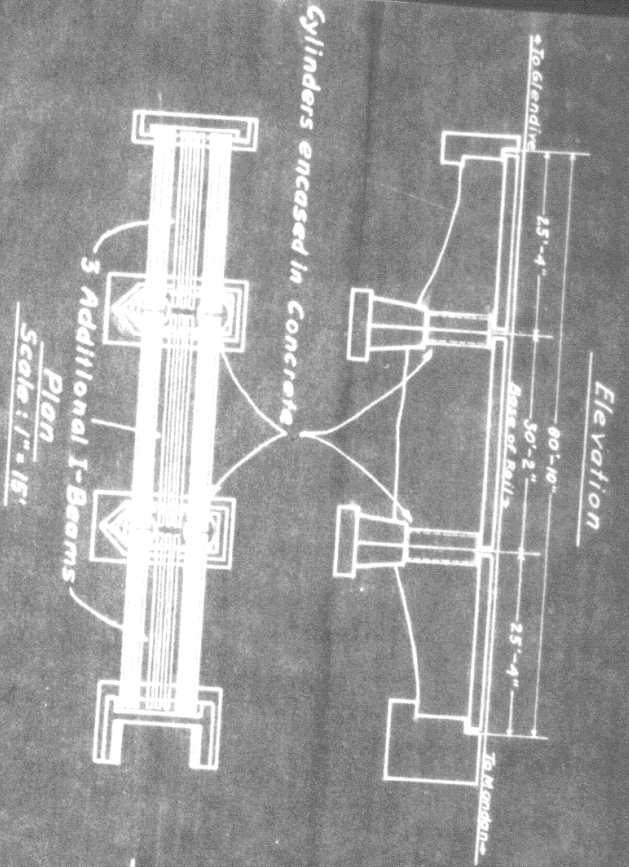


MAP AND PROFILE

Scales
Horiz. = 1" = 400'
Vert. = 1" = 20'

N.P.R.Y
Yellowstone Division
N.DAK. VAL. SECT. 2
BRIDGE 71 OVER KNIFE RIVER
SKETCH SHOWING PROPOSED ADDITIONAL I BEAMS
MAKING SPANS GOOD FOR STAND. LOADING
Scales as noted
Office of Bridge Engineer
St. Paul Minn. Sept. 17, 1926

For Detail See Bridge Engrs. Plan # 61065
 Dated: St. Paul, Nov. 2, 1926.



Valuation Section No. Det. No. 2.
 Auth. under Impl. No. 2-87, dated 12-4-26.
 Work begun Jan. 1927.
 Work completed Aug. 23, 1927.

Office of Dist. Engrs. Livingston, Mont., Oct. 11 - 1927.
 New Work shown

Yell. Div. N.P.Ry.
 Reinforce T-Beam Spans Bridge No. 71.
 Near Hebron
 1st Dist.